



Specifier Solutions

Commercial & Institutional Buildings

Every time you tackle a new design project, you're faced with a new set of challenges. From hospitals to schools, every building has its own unique requirements.

You can find Chicago Faucets in education, healthcare, retail, and similar facilities across the country. The reason? We take the hassle out of selecting the right plumbing fixture for your application. This frees you to focus on your central mission: providing a safe, clean, comfortable environment. Here are just a few of the areas where Chicago Faucets make your job easier:

Conservation & Sustainability — Easily select and specify products designed to limit flow rate and operating time to help conserve water.

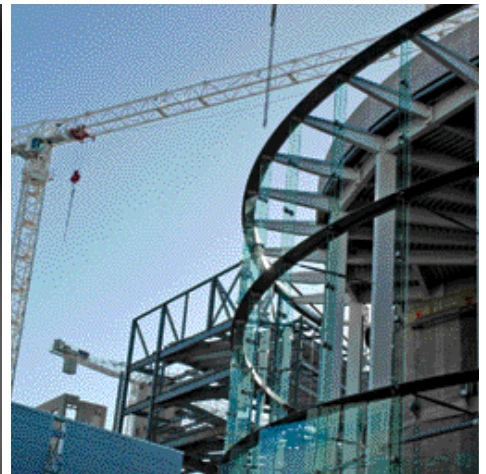
Flexibility & Expandability — When facility usage changes, there's no need to tear out and install new fixtures. Changing components like handles, spouts, and cartridges on your Chicago Faucets is a snap, saving time and reducing inventory for facility maintenance.

Cleanliness & Sanitation — Enhance sanitation and safety with hands-free electronic faucets and a wide selection of pedal-operated products.

Accessibility — Choose from a comprehensive offering of products that meet the requirements of the Americans with Disabilities Act.

Made in the USA — Selecting products that meet the requirements of the Buy American Act can help support jobs across the USA. At Chicago Faucets, over 95% of our products meet these requirements.

Aesthetics — Reliable operation is a given. Chicago Faucets also give you a clean, classic design that complements the look of any facility.

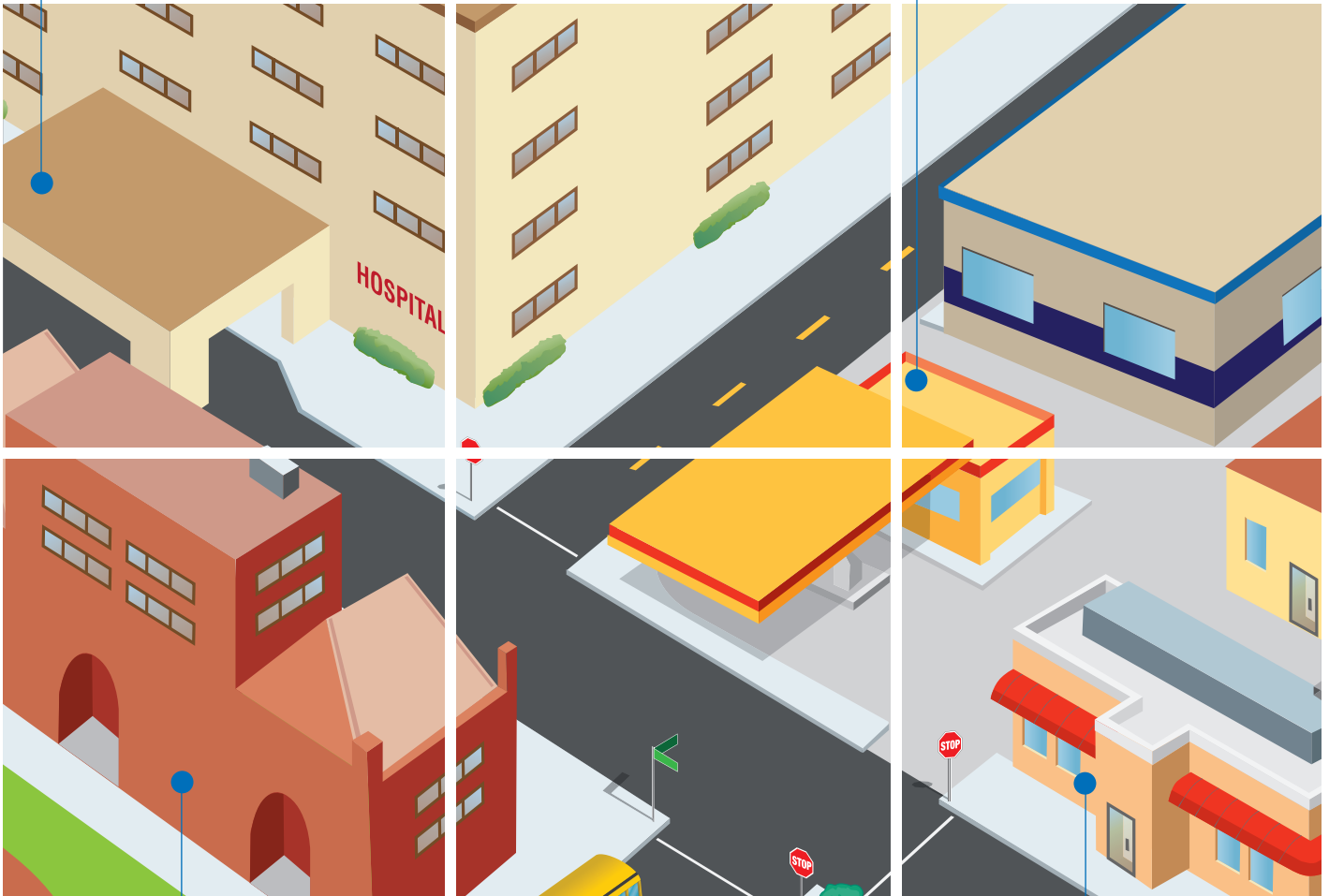


Healthcare

Choose from sink faucets, lavatory faucets, shower valves, bed pan cleaners, and lab faucets to cover any healthcare project.

Office and Retail

Chicago Faucets offers metering faucets, flush valves, and a wide selection of sensor-operated electronic faucets.



Education

From the cafeteria to the janitor's closet, Chicago Faucets provides products for every room in the school.

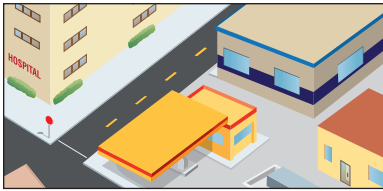
Food Service

A single-source solution with a wide selection of glass fillers, pot fillers, pre-rinse sprays, and faucets for food prep areas.



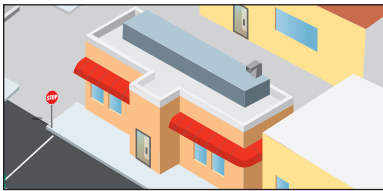
Education

Education projects have a variety of building types filled with a wide range of service and functional areas. From dorm rooms to labs, each area has its own unique requirements.



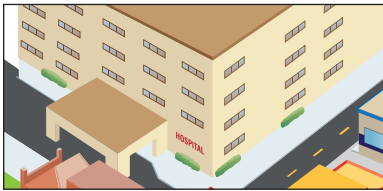
Office and Retail

Reliability, durability, and water conservation are essential for any office or retail location. Chicago Faucets delivers unsurpassed commercial performance, help control water usage, and are easy to maintain.



Food Service

Food service projects require durable, dependable products that can be quickly repaired. Our interchangeable design assures that parts are always available at a moment's notice.



Healthcare

Faucets for healthcare projects need to address accessibility and hygiene. Chicago Faucets offers products for just about every healthcare application – from physician and nurse sinks to bed pan cleaning products.



Bubblers

Durable, vandal-resistant, and available with an antimicrobial flexible head for added safety and protection.



E-Tronic® 40 & HyTronic® Lavatory Faucets

Dependable and adjustable hands-free faucet operation will provide a sanitary, water conserving wash area in dorm rooms.



Manual Metering Faucets

Our time-tested metering design offers adjustable and dependable water savings. Available in a wide choice of styles.



Flush Valves

Finish off the restroom by bringing our dependable metering design to flush valve locations.



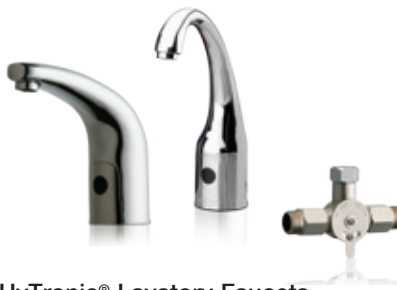
Pre-Rinse Products

Over 25 pre-rinse products vary from wall-mount to deck-mount and even include a variety of hose reel configurations.



Sink Faucets

Durable sink faucets provide a sanitary food preparation area with an unmatched reliable solution.



HyTronic® Lavatory Faucets

Provide increased water conservation and hygiene. Add a thermostatic mixer to enhance safety.



Pedal & Knee Valves

Provide accurate and convenient faucet operation for any lab environment.



SAM™ Satin Finish Products

With Sureshield® Silver Ion Technology for a satin finish that is encapsulated in a chemical resistant, antimicrobial barrier.



Water & Combination Fittings

Interchangeable parts for unmatched flexibility. Combination fittings provide convenience and conserve space.



Pedal & Knee Valves

Provide accurate and convenient faucet operation for any lab environment.



Bubblers

Durable, vandal-resistant, and available with an antimicrobial flexible head for added safety and protection.



Pail Hook Service Sink Faucets

Essential for a facility service area, in numerous configurations and styles.



Stops & Supplies

We make it easy to connect our faucets to your plumbing lines with a choice of over 45 stop and supply options.



Pre-Rinse Hose Sprays

A variety of industrial-strength hose sprays including the Triple Force™ low flow pre-rinse spray.



Glass & Pot Fillers

Durable, dependable, and versatile fillers for pots and glasses.



Kitchen Sink Drains

A rotary or twist drain completes any commercial kitchen sink application.



HyTronic® Gooseneck Faucets

A great option for scrub areas, as well as patient washrooms. Dependable and adjustable hands-free operation.



Manual Wristblade Faucets

For over 100 years, our wristblade products have helped to set the standard for faucets in healthcare applications.



Bed Pan & Shower Products

Complete any patient room with a wide selection of anti-scald shower valves and bed pan cleaners.



Chicago Faucets and Sustainability

Chicago Faucets has been an industry leader in environmental responsibility. From our manual metering faucets to our incredibly dependable HyTronic electronic faucets, we have helped reduce water usage in countless buildings across the globe. We were the first company to offer a complete line of products designed to meet the California lead-free standard with numerous products that also meet the CALGreen water conservation requirements.

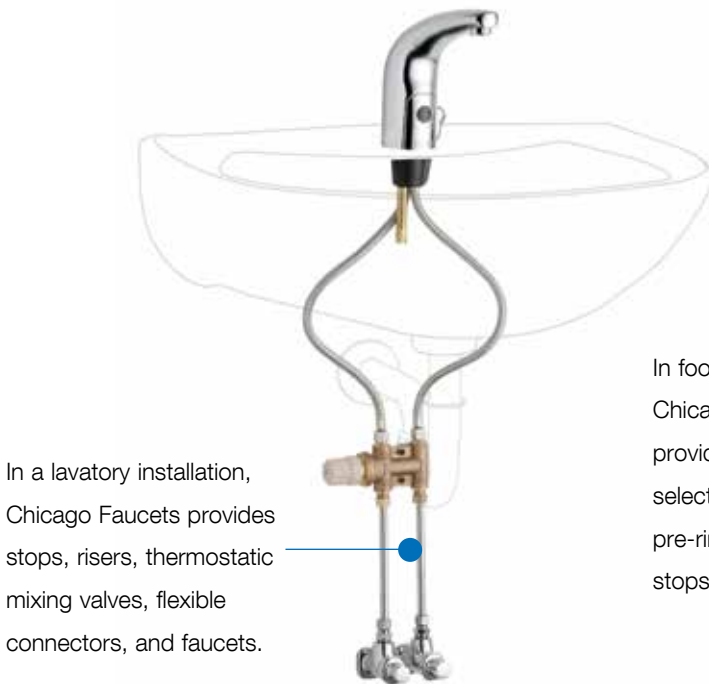
As a sign of our commitment to continually improving environmental performance, Chicago Faucets has earned ISO 14001 certification. This designation recognizes our systematic approach to all of our environmental management systems. We identify any potentially hazardous processes, institute strict controls, continuously monitor outputs to verify compliance, and thereby prevent critical incidents. In order to earn this designation, Chicago Faucets must maintain a Continual Improvement Process focused on:

- **Expansion:** We continually expand our environmental management systems to other business areas.
- **Enrichment:** We extend our environmental management system to more activities, products, processes, emissions, and resources.
- **Upgrading:** We remain knowledgeable of the latest environmental issues and look for ways to improve our systems.

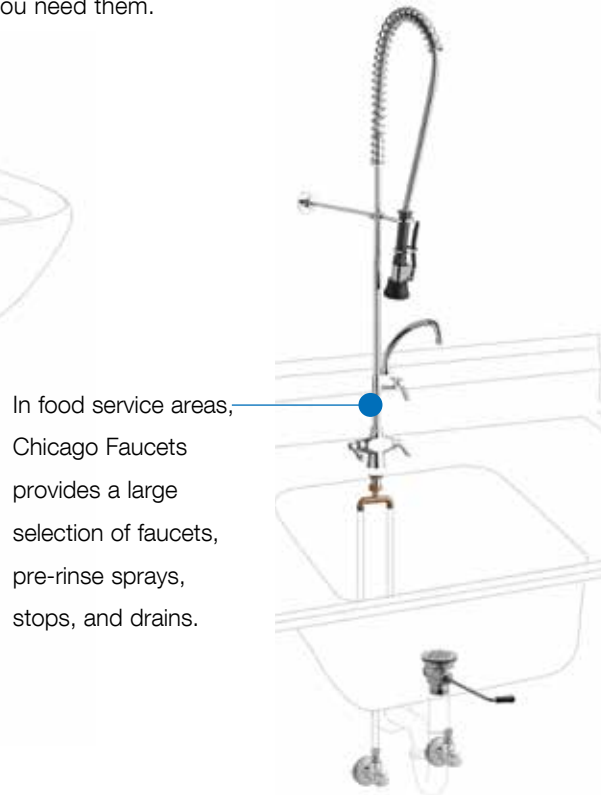
On the following pages, we share some of the measurements we look at annually in an effort to continually reduce our impact on the environment.

Chicago Faucets Single-Source Solutions

Chicago Faucets offers single-source solutions for water flow at each of your sink locations. From the stops to the aerator, you can count on Chicago Faucets to provide durable, high-performance products. We offer the broadest product selection in our industry, backed by the strongest warranties and unparalleled customer support. Our CFNow!™ shipping program allows you to receive our most popular faucets right when you need them.



In a lavatory installation, Chicago Faucets provides stops, risers, thermostatic mixing valves, flexible connectors, and faucets.



In food service areas, Chicago Faucets provides a large selection of faucets, pre-rinse sprays, stops, and drains.

Concerned About Lead?

ECAST®

Perhaps your facility or your state is considering — or has already implemented — reductions in the allowable lead content of plumbing fixtures. If so, you'll be relieved to know that Chicago Faucets has you covered. Simply choose your fixtures from our **ECAST®** line: durable, high-quality brass faucets and fixtures that are designed to meet the most stringent requirements for low-lead plumbing products. Just like that, you're in compliance. No guesswork, no hassle.

Proven Solutions To Help You Save Water

Water Conservation, Part 1: Flow Control

When you choose from our variety of .35 to 1.5 GPM outlets, you can achieve up to a 77% reduction in flow rate, which translates into real water savings. And all of our low-flow outlets provide these savings while maintaining consistent flow over varying pressure ranges. You even have the option to provide a pre-rinse spray with a .91 GPM flow rate, reducing water usage by almost 40%.

Water Conservation, Part 2: Metering

For precise control over the amount of water delivered, specify our metering faucets. Our mechanical metering faucets can be set to cycle intervals as low as two seconds. When you're ready for even greater precision, select our electronic, sensor-operated faucets from the **HyTronic®** or **E-Tronic® 40** lines. With above-deck electronics and remote programmability, they represent the state of the art in metering faucets.

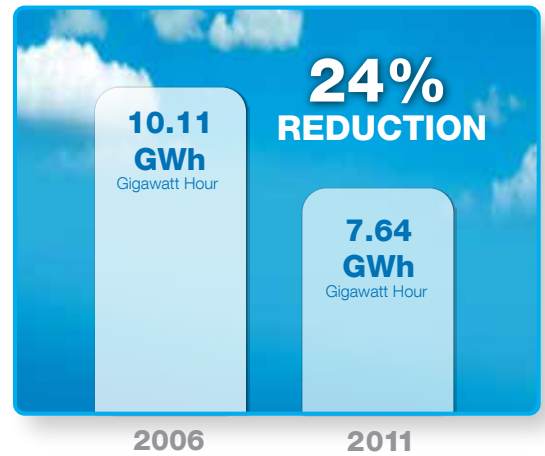
Improving Energy Efficiency at Chicago Faucets

Chicago Faucets is committed to minimize energy use from all of our facilities worldwide. Over the past five years, we've invested in more energy efficient products and employed more eco-friendly manufacturing practices. Reducing energy is not only better for the environment, it also helps us control our costs.

Every year, Chicago Faucets conducts energy audits at each of our facilities to measure our improvements and uncover additional areas for energy reduction. Our audits have helped identify the energy usage of operating equipment, air compressor systems, and HVAC systems, and revealed the various ways that our demand for operating energy could be reduced by using these systems more efficiently.

Our efforts to reduce energy consumption are aligned with our commitment to use resources more efficiently and protect the environment. Over the past five years, Chicago Faucets has reduced overall energy consumption by 24% in our three manufacturing facilities.

Electricity Usage



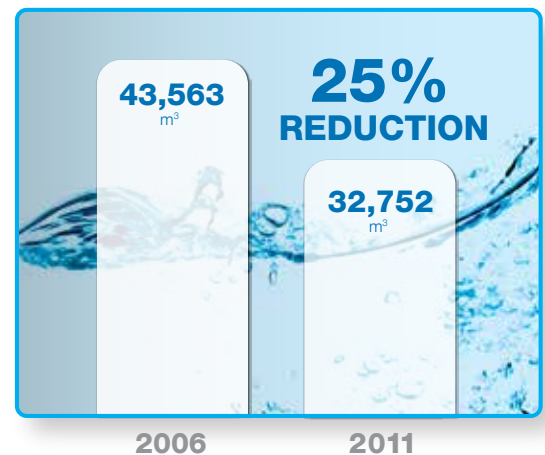
We're Serious About Saving Water

As a manufacturer of faucets, we clearly understand that water is a precious resource and must be managed wisely. Chicago Faucets measures water management annually as part of our overall environmental strategy. Over the past five years, we have achieved significant reductions in our manufacturing water requirements.

Chicago Faucets has taken several significant steps to advance a more comprehensive and collaborative approach to water management. In addition to reducing water usage, we have implemented robust programs for the treatment of post-production waste water.

Our commitment to water conservation has resulted in dramatic improvements at all our facilities. Over the past five years, Chicago Faucets has reduced annual fresh water consumption by 25% in our three manufacturing facilities.

Water Usage



CASE STUDY

Our Duffin facility in Elyria, Ohio, machines most of our components. To help reduce energy consumption, we invested in new variable speed air compressor technology for the facility. When demand for the compressor is reduced, it automatically kicks down to a lower speed to reduce energy use. Duffin expects to see a 10% reduction in energy over the first twelve months of use.

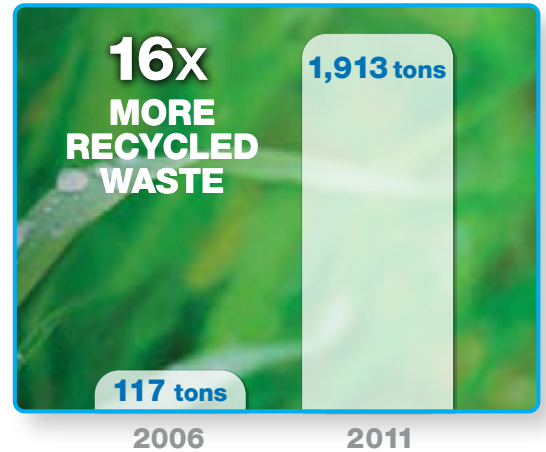
Reducing Landfill Waste Through Recycling at Our Facilities

After energy consumption, waste accounts for the second largest environmental impact of production. Chicago Faucets has focused on decreasing the amount of waste generated at all of our facilities and recycling the unavoidable waste.

Over the past five years, Chicago Faucets has continually reduced the amount of waste going to landfill, while increasing the amount of recycled waste. In our Milwaukee facility alone, we have reduced the amount of landfill waste by 60%. An amazing 98% of our scrap brass is recycled and since we utilize a clean, virgin alloy manufacturing process, the scrap can be recycled and returned as ingot for casting.

Our commitment to waste reduction and recycling has resulted in dramatic improvements at all our facilities. Over the past five years, Chicago Faucets has reduced landfill impact by increasing recycling by 16 times – more than 1.9 tons per year.

Waste Recycling



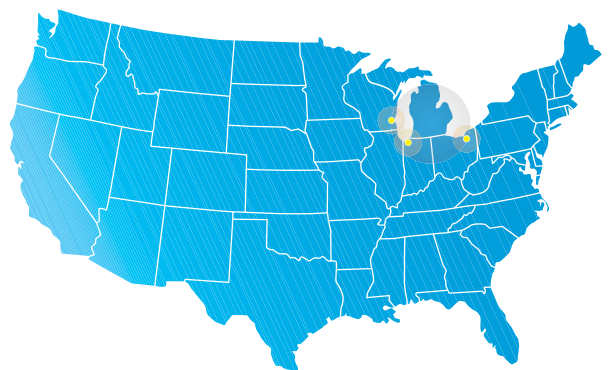
Centralized Logistics Mean Lower Environmental Impact

Centralized logistics helps Chicago Faucets increase efficiency and reduce environmental impact. Our Michigan City, Indiana location is utilized to ship orders throughout North America. The site is situated in the heart of the United States, a short distance from our Ohio and Wisconsin production sites.

Additionally, all of our facilities look to local suppliers to provide the materials necessary to deliver a finished product – from corrugated boxes to the brass for foundry and tooling. In addition to helping reduce environmental impact, this approach increases our ability to react to changing market conditions and supports American jobs.

Our focus on centralized logistics has resulted in nearly 90% of material purchases from vendors within a 200 mile radius of each facility.

Centralized Location, Local Suppliers



CASE STUDY

In addition to reducing water usage, Starline, our Milwaukee, Wisconsin foundry, utilizes a state-of-the-art waste water treatment system that has been recognized by the City of Milwaukee for its environmental effectiveness. This system filters metals from the waste water to a level that is 100 times less than the legal requirement – less than 2 parts per million – and is tested by the EPA five times a year.



We are a member of the U.S. Green Building Council and support the Leadership in Energy and Environmental Design (LEED) Green Building Rating System™, to measure the efficiency and sustainability of buildings in the U.S. and Canada. If you are trying to achieve LEED Certification for your building, our low-flow outlets, metering cartridges, and sensor-operated faucets can contribute points in these areas: Water Efficiency Credit 2: Innovative Wastewater Technologies and Water Efficiency Credit 3: Water Use Reduction



We are proud to be a partner with WaterSense®, sponsored by the EPA and designed to protect the future of our nation's water supply by promoting efficiency and enhancing the market for water efficient products, programs, and practices.



We are a charter sponsor of the Alliance for Water Efficiency, a non-profit organization that is dedicated to the efficient and sustainable use of water. It brings together a diverse range of stakeholders to advocate water efficiency and conservation.



a Geberit company



Chicago Faucets, a member of the Geberit Group, is the leading brand of commercial faucets and fittings in the United States, offering a complete range of products for schools, laboratories, hospitals, office buildings, food service, airports, and sports facilities. Whatever your requirements may be, Chicago Faucets offers standard and made-to-order products that are designed to meet any commercial application.

The Chicago Faucet Company
 2100 South Clearwater Drive
 Des Plaines, IL 60018
 Phone: 847/803-5000
 Fax: 847/803-5454
 Technical: 800/832-8783
www.chicagofaucets.com

