

FacilityConneX

Powered by GE Proficy™

Continuous Commissioning Software to Improve Building Comfort, Equipment Performance, and Energy Use.

Anytime, Anywhere

- Real-Time Access to Data
- Key Performance Indicators
- Collaboration with Notes and Tasks
- Patented Geo-Intelligence Technology
- Browser and Mobile Visualization

Notify Now

- Notifications to Alert Personnel
- Centralized Alarm Viewing
- Alarm Acknowledgement and Shelving
- Recommended Condition-Based Actions (SOPs)

Detect and Know

- Continuous Asset Optimization
- Equipment Risk Detection
- Top Offenders and Findings
- Probable Root Cause
- Fleet Analysis and Predictive Detection

Cloud Environment

- Connections to 100's of Data Sources
- Secure Information Access
- True Multi-Tenant Architecture



Advanced Notifications

Our equipment and fleet health dashboards intelligently alert you to current or predictive conditions that require critical attention or further investigation. With advanced notifications and condition-based actions, users can better react to process and equipment inefficiencies.

Fault Detection & Diagnosis

Our software leverages 100's of equipment and system specific analytics, developed by building commissioning experts, that pinpoint specific actions your team can take to improve building comfort, performance, and reduce operational and maintenance costs.

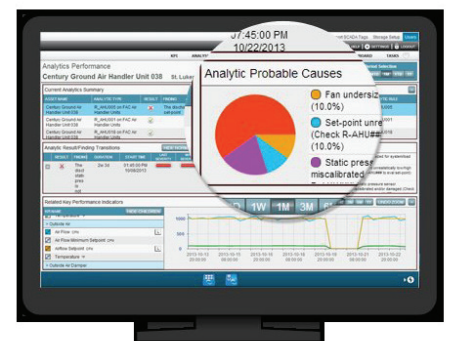
Best yet, we can help you drastically reduce your facilities' energy usage, and help ensure that those savings persist year over year!

Smart Continuous Monitoring

FacilityConneX is an enterprise class operational intelligence solution that delivers real-time equipment monitoring & trending, fault detection & diagnosis, and continuous building commissioning analytics, all from your browser, tablet, or smartphone.

FCX & GE

Partnered with GE Intelligent Platforms (NYSE: GE) and powered by their GE Proficy® Software, which has been deployed to over 20,000 facilities across the globe, FCX gives you the ability to better manage all the critical equipment in a single building, large facility, or across a disbursed campus or multi-building portfolio.



Single Source of Knowledge

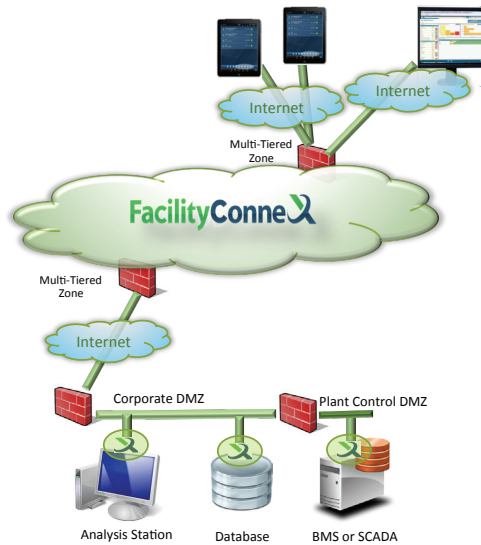
FCX integrates seamlessly with over 200+ protocols, allowing you to connect to PLC's, HMI/SCADAs, Data Historians, and BMS/Control systems (via BACnet or OPC). Leverage these disbursed sources and transform your data into one source of operational and actionable intelligence!



Industrial Secure Connections

The GE Proficy Agent secures all data collections to our FCX server utilizing state-of-the-art AES 256-bit encryption, digital certifications, and user authentication, to ensure the highest level of data security. Access to your information is then provided from the FCX server without the need for a VPN connection.

Optionally, if the your facility has no internet connectivity, we can offer an appliance which will directly collect data through Cellular or Ethernet, and transmit information to the FCX server with no networking involvement. In addition, FacilityConneX also offers long-term storage options for year-over-year trending and analysis.



Software 'with' Services

As part of your software subscription, monthly consultations are conducted by our customer experience team. These discussions include time for training, fine-tuning of equipment and system analytics, implementation changes, and review of critical alarms and system findings. We consult with you on energy savings opportunities and equipment optimization findings that FCX has identified to help your prioritize and correct the equipment performing inefficiently, or in failure. Our Engineers will review the system findings every month, leveraging the real-time FCX Glance Dashboards, and data trends to target specific areas requiring the most attention. That way, you can focus on the things that matter most to your team!

Intelligence At Hand

GE's patented GEO-intelligence technology is designed to automatically navigate and provide information based on user location, role, and equipment condition. This situational awareness technology combines asset criticality with location and proximity, to ensure that the user has the key information they need on the equipment close by.



The "FCXperience" Team helps ensure YOUR ROI

We work closely with you to understand where you're headed, and what challenges you've faced getting there. And together we design and implement a continuous commissioning program that delivers sustainable cost savings. This team approach integrates the power of technology, analytics, and expert "hands on" consulting to drive savings through operational efficiency and energy consumption!



For more info, or to schedule a live demo, please visit:

www.FacilityConneX.com

OR CONTACT US DIRECTLY

📞 774.283.6008

✉ Sales@FacilityConneX.com

