

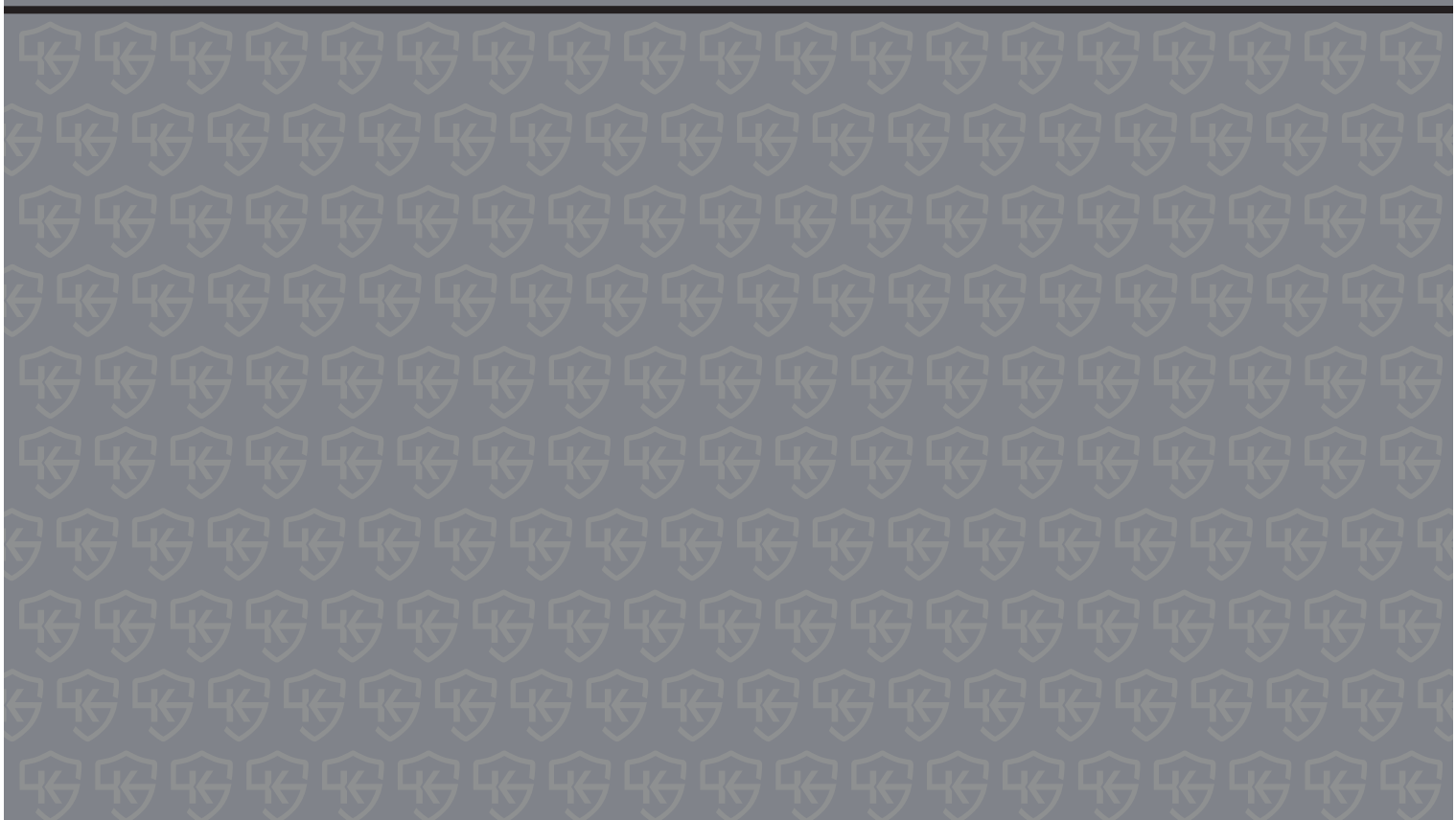


KEYper Systems

Key Management Simplified

ACCOUNTABILITY • ANALYTICS • SECURITY • ASSET CONTROL

PRODUCT CATALOG





“KEYPer Systems is a vendor that treats us like a partner, not just another client.”

Mark Boehlen
Chief Information Officer
Ken Garff Automotive



Monarch Electronic Key Systems

A revolutionary method of key and asset management.

Pages 4-5

Why KEYper Systems?

Page 6

KEYperScan

Scanfob and iOS technology turn your mobile device into a powerful inventory management system.

Page 7

Nite Drop Zone

Offer your customers the ultimate in after-hours convenience when dropping off keys.

Page 8

Service Express 24

ATM style key dispensing system allowing your customers retrieval of keys after hours.

Page 9

Mechanical Key Systems

An effective, low cost solution to many key control problems.

Pages 10-11

Lock Control

Padlock management allowing you to control access to your padlock inventory for lockout/tagout.

Page 12

Customer Service/Support

Page 13

KEYper® Store

Order KEYper® Systems products online 24/7 via our online store.

Page 14



About KEYper Systems

KEYper® Systems, founded in 1992, is committed to manufacturing the highest quality and most efficient key and asset control systems for your organization. We manufacture, as well as support, a complete product line of both mechanical and electronic systems. These patented systems increase operational efficiency, reduce liability, and create a culture of accountability. KEYper® is renowned for our in-house industry-leading customer service and support.

INDUSTRIES

WE ARE COMMITTED TO SUPPORTING



Automotive/Fleet - Auto Dealerships, Service Centers, Fleet Vehicles, Rentals



Property Management - Multi Family, Single Family, Condominiums, Real Estate / Rentals



Facilities - Universities, Hospitals, Hotels, Manufacturing



High Security - Law Enforcement, Jail / Corrections, Casinos, Banks



Government - MotorPool, Armory, Data Centers, Building/Housing

5679 Harrisburg Industrial Park
Harrisburg, NC 28075
KEYperSystems.com
KEYPerStore.com



Call 800.399.7888 for general information, sales/pricing or technical support.



The Monarch Electronic Key System provides a revolutionary method of key and asset management designed to fit the needs of all industries while providing the ultimate solution in accountability, analytics, security, and asset control. Monarch Key systems can be customized to fit the needs of your organization ranging from 40 to 280 keys per cabinet and can easily be expanded to more than 2,000 total keys. Monarch Key systems can be easily wall-mounted or configured as a free-standing system. The system provides a complete audit trail of your keys and assets. You will always know who has your keys, when they took them and why. The Monarch Key system also offers a wide array of features and add-ons to meet your organization's needs.

- **Web Based Administration**
- **Customized Reporting**
- **Email SMS/Alerts**
- **Digital Photo Capture**
- **Multiple Access Options (PIN, Biometric, Proximity Cards)**
- **And Much More**

Features And Add-Ons

Fleet Management



Increase the efficiency and operation of your fleet! Track odometer statements and daily usage of your fleet vehicles. Assign vehicle reservations for quick and easy pickup.

Lot Blocking



Use our Lot Blocking system to help identify vehicles that may be blocked by multiple vehicles. Also identify the exact lot location of any given vehicle.

DMS Integration



KEYper® has partnered with Dealer Downloads providing the ability to import your vehicles from most DMS Providers.

Label Printer



Use the KEYper® Label Printer to print various labels for your vehicles and equipment. Incorporate a barcode onto the label and use the KEYperSCAN (Page 7).

Monarch Plus



The Monarch Plus Electronic Key System expands the capabilities of the Monarch System. The Monarch Plus Electronic Key Systems contains all the innovative features of the Monarch system while taking security to the next level by electro-mechanically locking each key in place. The Monarch Plus is ideal for your keys and assets that require the highest level of security and accountability. Like all Elite Series Electronic Key Management Systems, the Monarch Plus can be customized to meet your key and asset management needs and will grow with your organization, with industry leading storage and expansion capabilities.

- **Each Key Electro Mechanically Locked in Place**
- **Restrict Access by User, Key or Cabinet**
- **Visual and Audible Alarms**
- **Emergency Key Release Capability**
- **Networking, Integration, API**



Digital Camera



For added security, each transaction on the Elite Series Key System is photographed and time/date stamped for identity verification.

Prox Card



Do you already have identification cards within your organization? A Prox or Swipe Card reader can be integrated into the Key Systems to read your existing identification cards.

Multi System Networking



Link multiple systems throughout your organization. Keys and users can then float throughout multiple key systems for added convenience, storage and reporting.

Emergency Key Mapping



In the event of complete power loss, our emergency key mapping system will allow you to download, straight to your smart phone, the exact location of the key within the cabinet.

Why KEYper Systems?

NO Hidden Fees Contracts Licenses

- Industry Leading Customer Care and Support
- Plug and Play Design for Easy Expansion
- Multiple Mounting Options
- Comprehensive Reporting with Report Builder
- Online Ordering System
- Web Browser Based Management Portal
- Multiple Login Options Available
- Industry Leading Storage Capacities
- Email, SMS, Audible and Visual Alerts
- Remote Diagnostic and Support Tools
- Robust Cabinet Construction

“ These are the best and most user friendly machines we have ever used. ”

Paul Tickle
Compliance Officer
Sheehy Auto Stores

KEYperSCAN

Your Inventory. Go Mobile.

It's unbelievably simple. Perfected for the automotive and fleet-management industries, our revolutionary new system uses scanfob and iOS technology to turn your mobile device into a powerful inventory management system. Scan your inventory, sync with your KEYper® Key Management System and generate a variety of reports.

How It Works

As keys are added to the key system, a label with a barcode is generated to be placed on the vehicle. Once all of your vehicles have been labeled, you are ready to use your new KEYperSCAN System. When you are ready to take inventory of your fleet or dealership, you simply download the inventory from your KEYper® Elite Series Key System to your mobile device over your WiFi network. Now you are ready to start scanning. After the scanning is complete, simply sync your KEYperScan System back to the key system over your WiFi network. Now you are ready to view your results.

KEYperScan works hand-in-hand with our Key Management Systems to ensure all your keys and assets are accounted for.

KEYperSCAN Includes:

- iPad with Case
- Elite Software KEYperSCAN App
- Barcode Scanner
- Zebra Label Printer

Requirements:

- KEYper® Systems Elite Series Key Management System



KEYperScan Label Printer

Choose from our various weather proof window label styles. Each label printed contains the important information allowing for quick and easy identification.



Nite Drop Zone

The KEYper® Nite Drop Zone offers your customers the ultimate in after-hours convenience when dropping off keys. Our convenient, reliable and secure Drop Box is the answer to late night or early morning key drop off. It is a simple, smart and affordable way to maintain and control your keys, even when you're not there.

Give your customers the convenience they deserve with the KEYper® Nite Drop Zone. To drop off their keys, users simply complete a convenient envelope, insert their keys, and drop the envelope in the KEYper® Nite Drop Zone. Easy to understand decals explain the key management process. There's no need for a separate mail slot. It's time to avoid lost keys, smudged envelopes, etc.



Product Specifications:

- Heavy duty ¼ inch steel construction with durable powder coat finish
- Weather resistant
- No worry, theft resistant design. Once envelope is deposited into the vault it cannot be removed without the key.
- Convenient, pull-down writing surface uses gas props to assist motion.
- Easy, bolt-through wall installation
- Dimensions: 22"H x 19"W x 12"D
- Weight: 70 lbs. (UPS shippable)

Service Express 24



The KEYper® Service Express 24 is a 24-hour automated key box dispensing system that works much like an ATM. It's a perfect solution for service departments and rental property management offices

1. The service advisor or manager places the keys inside the system.
2. The customer uses a personal code to retrieve the keys.

Installation is simple: All KEYper® SE24 key box models can be easily installed onto any wall surface with our three-bolt mounting system. All three mounting bolts are hidden and can only be accessed from inside the unit.

Two Model Sizes

The KEYper® SE24 key box is available with as few as 20 key actuators and as many as 40 to accommodate any service facility and any budget. These two models share the same powerful software features.

How Does It Work?

Customers simply enter a five-digit PIN (Personal Identification Number supplied by you or your customer) and the KEYper® SE24 key box dispenses the keys, displays directions to their vehicle and they are on their way in less than ten seconds. Using this key box is that easy. Warranty customers will appreciate the “no-hassle, no wait” convenience the system provides. The KEYper® SE24 key box can also be used to pick up loaner vehicles and is a great tool for “off site” or “mobile service operations” at business complexes. Rental property management offices can utilize the KEYper® Service Express key box to offer safe and secure key pickup after office hours. You protect not only the property owner, but provide peace-of-mind to the renter by demonstrating the seriousness with which you regard key security and accountability.

Service Advisor or Management Tracking

The key box software provides for a single “administrator” code with full access to software functions. In addition, you can have up to ten “service advisor” codes allowing limited access to software functions. The key box system will track customer PIN codes entered by each advisor and will report PIN codes that have been incorrectly entered by the customer. A report detailing the last 200 transactions, along with overall usage statistics, is available based on quarterly, bi-annual, yearly, and life of the system.

Transaction Reliability

The KEYper® SE24 key box is designed to provide maximum reliability in all weather conditions. The system has been tested in simulated conditions of blowing rain, dust, vibration, humidity, and extended temperatures from -40°F to 158°F (-40°C to 70°C). In the event of a power loss, the system is smart enough to remember all advisor codes, PIN codes and message screens until power is restored.



Mechanical Key Systems

KEYper® Mechanical key management systems are an effective, low-cost solution for your key control challenges.

- Patented system
- Simple to install, use and manage
- Improves productivity and reduces costs of lost keys/assets
- Provides instant visual of checked out keys and the users who removed the keys
- Available in a single control module
- Expandable in 5-key modules from 5, 10, 15 up to 150 keys
- Great for managing items such as tools, dealer plates and even hand-held scan devices

How It Works:

- Each key is locked onto a KEYper® Key Plug using a tamper proof seal, and the key plug is locked into the left port of each key location on the board.
- To return the key plug with the key, insert the key plug back into the left port and then turn the access peg, locking the key plug back into the correct location.
- Authorized users insert their personalized access peg into the right port of the desired key and turn to release the keys for removal. Their access peg remains locked into the system until they return the key plug back to the board.
- Access pegs can be engraved with numbers or initialled for increased accountability.

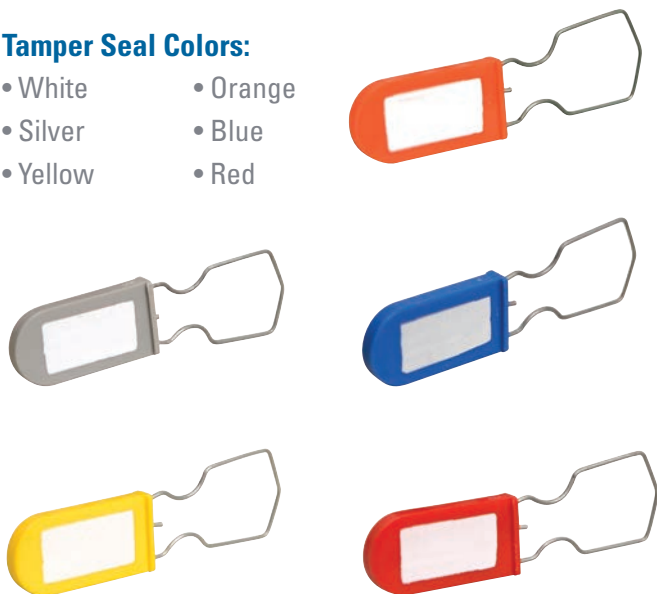


Mechanical Key Systems Specs

Unit	Unit Capacity	Height	Width	Depth	Weight
A51	1 Key	1.5	5.0	1.0	1 lb.
M5/1	5 Keys	4.0	21.375	1.3	4 lbs.
M10/1	10 Keys	5.375	21.375	1.3	5 lbs.
M15/1	15 Keys	7.0	21.375	1.3	6 lbs.
M25/1	25 Keys	10.0	21.375	1.3	7 lbs.
M50/1	50 Keys	17.5	21.375	1.3	14 lbs.
M1001	100 Keys	32.5	21.375	1.3	25 lbs.
M150/1	150 Keys	47.5	21.375	1.3	32 lbs.
M25E	25 Keys	16.0	24.375	6.0	34 lbs.
M50E	50 Keys	24.0	24.375	6.0	48 lbs.
M100E	100 Keys	38.75	24.375	6.0	86 lbs.
M150E	150 Keys	53.375	24.375	6.0	97 lbs.
MHC	-	41.0	21.5	19.5	18 lbs.
MHCD	-	41.0	23.0	19.5	21.5 lbs.
MRC - Small	-	56.0	24.0	30.0	67 lbs.
MRC - Large	-	56.0	47.0	30.0	76 lbs.
MWM - Large	-	48.0	29.0	0.75	27 lbs.
MWM - Small	-	27.0	29.0	0.75	16 lbs.

Tamper Seal Colors:

- White
- Silver
- Yellow
- Orange
- Blue
- Red



Peg/Key Colors:

- White
- Yellow
- Red
- Blue
- Silver
- Tan
- Green
- Lime
- Teal
- Fuchsia
- Orange



Lock Control



The KEYper® Systems commitment to asset management doesn't stop at keys. Systems are available for padlock management allowing you to control access to your padlock inventory.

Keeping locks readily available at all times can be challenging. With KEYper® Key Lockbox Management Systems, padlocks can be at arm's reach at all times. Know how many locks are checked out of the system and who has them at a glance.

KEYper® Padlock Management Systems allow your safety division to provide a padlock station at the point of need, while keeping the padlocks secure. Compliment your lockout/tagout program with a padlock management system. Your employees will use their personalized access peg to remove a padlock from the system, which retains their access peg until the padlock is returned.

From single key lockbox stations, to systems for up to 75 padlocks, with and without locking enclosures, the KEYper® Key Lockbox Management System can be customized to meet the needs of your facility. By tracking both the padlock and its keys, you can be assured a lock and key is available to meet your OSHA LOTO mandated procedures.

Asset Control



We can secure many types of assets including: tools, scan guns, tablets/cell phones, guns, dealer plates, and oversized fobs. Let us design a custom asset management solution for you.



Trusted by Industry Leaders

KEYper® Systems serves 23 out of the 25 largest automotive groups in the United States, as well as some of the largest multi-family housing companies, plus numerous government and military institutions. We are an official supplier to the U.S. government, **GSA-Approved #GS-07F-0771X**. We have extensive experience in working with clients and distributors from across the globe.

Streamlined Asset Control

KEYper® Systems simplifies and streamlines asset control. Our systems promote employee accountability, provide tight security, reduce your liability, and protect your bottom line. We also offer robust analytics for the continuous optimization of your system.

Custom Solutions with Full Support

KEYper® Systems closely works with each client to develop a custom solution, drawing from a complete product line of mechanical, electronic and hand-held solutions. Touch screen systems include built-in biometric, PIN code or card swipe technology. Every solution is backed by a full-year warranty and supported by industry-leading, 24/7 customer support, including online diagnostics and real-time problem resolution.

Open-Door Manufacturing Tours & Product Demos

KEYper® Systems world headquarters is located in Harrisburg, North Carolina. We invite prospective clients to tour our manufacturing facilities and participate in interactive product demonstrations. Virtual product demonstrations are also available. To get started, simply give us a call.

1.800.399.7888



“A thousand times better than the competition.”

L.D. Umholtz
North Point Cars

NO
Hidden Fees
Contracts
Licenses

Order Products Online



Order KEYper® Systems Products Online

- 24/7 ordering on all supplies
- Check for weekly specials
- Earn rewards points for future discounts

[KEYperStore.com](https://www.keyperstore.com)



“The system is easy to use and provides us with an efficient method of key retrieval and storage.”

Captain Jeff Outen
Jail Administrator
Union County Sheriff's Office
Monroe, NC





KEYper Systems
Key Management Simplified

5679 Harrisburg Industrial Park
Post Office Box 1540
Harrisburg, NC 28075

Toll Free: 1.800.399.7888

Phone: 704/455.9400

Fax: 704/455.1115

KeyperSystems.com • KeyperStore.com



General info: info@keypersystems.com

Sales/Pricing: sales@keypersystems.com

Technical Support: support@keypersystems.com