

# surface prep



Grinders  
Shot Blasters  
Scrapers  
Dust Collectors  
Air Scrubbers

Sweeper/Scrubbers  
Diamond Tooling  
Scarifiers & Shavers  
Buffers  
Burnishers

**NIAGARA**  
**MACHINE, INC.**



*"A good building begins with a good floor. And when it comes to good concrete floors, Niagara Machine is your expert resource. We're distributors of an incredibly extensive line of grinding, polishing, and surface preparation equipment, and floor treatments and abrasives. More importantly, we offer a level of service that truly shines.*

*We listen. We consult. We recommend. We solve problems. We partner with you from start to finish, helping you choose the proper equipment, proper supplies, and the most efficient and economical process. This part of our capability—experience and expertise—is just as important as the quality equipment that we supply. This is the reason to turn to Niagara. This is what sets us apart."*

*Wade Christensen  
Vice President*

**NIAGARA MACHINE. THE BEST EQUIPMENT AND THE BEST KNOW-HOW!**

### *Niagara Machine your partner in concrete polishing*

Niagara Machine, Inc. is a national distributor of quality Lavina® concrete grinding and polishing machines and diamond tooling, BlastPro® shot blasters and scrapers, joint filler and floor repair products, concrete treatments, and Ermator® HEPA clean air vacuums. Over the past 15 years, the company has collaborated with hundreds of businesses across the country to develop smooth solutions for concrete floors. Whether the existing flooring is epoxy, carpet or tile, Niagara consults with building and maintenance decision-makers to provide comprehensive recommendations for new and existing floors, from removal to grinding to final polishing and maintenance.

Niagara Machine serves as a total resource for the planning, training and equipment required to transform old concrete floors. The company's comprehensive equipment line has been selected through critical performance evaluations of

every aspect of surface preparation. Everything is available under one roof: equipment sales, rentals, densifiers, dyes, joint filler, diamonds, shot and blades.

Niagara Machine is headquartered in Erie, PA, and has facilities in Charlotte, NC, North Bergen, NJ and Gloucester City, NJ. These four locations serve as showrooms, warehouses and repair sites, as well as customer training facilities where company technicians provide a step-by-step guide to the complete concrete grinding, polishing and finishing process, along with advice in choosing the proper equipment for specific applications. Niagara also has field representative and rental fleets at nine remote locations. Our representatives are Niagara employees and draw upon years of concrete polishing experience to meet your specific job requirements.

**THE NIAGARA DIFFERENCE: SERVICE THAT SHINES**

At Niagara Machine, excellent customer service is more than a promise: it's our way of doing business. We offer numerous sales support functions for the sole purpose of ensuring that you have the right equipment and right approach that works as effectively and economically as possible. Take a look at these benefits:



**PHONE TECH SUPPORT**

Niagara technicians are available any time to discuss the particulars of your floor and finishing requirements. There is no challenge that we haven't encountered or know how to manage.



**LARGE INVENTORY**

Niagara carries comprehensive lines of equipment and parts at all three of its location, including the brands that set the standards for quality in concrete floor finishing. Our mission is to serve as a one-stop shop for optimal convenience and efficiency



**FEET ON THE STREET**

We offer on-site consultation for challenging jobs beyond the scope of routine finishing. Trust our regional technicians for incredible support at your job site.



**EQUIPMENT REPAIRS**

Knowledgeable, factory-trained technicians offer complete repair and renovation services at all Niagara locations. And our service experts can be reached by phone for immediate trouble-shooting consultations.



**SAME DAY SHIPPING**

Orders are shipped on the day they are placed, assuring quick turnaround. Express shipping is also available to help you finish your project as efficiently as possible.



**TRAINING AND CERTIFICATION**

Niagara offers seminars and hands-on training in equipment selection, operation and finishing processing for customers and maintenance personnel.



**RENTAL FLEET**

All of the concrete polishing equipment that Niagara Machine handles is available for rent as well as for sale. Rental equipment can be shipped to any job site via common carrier.



**24/7 SHOPPING**

Equipment and supplies can be ordered on-line every day, around the clock to ensure the quickest possible delivery and minimize downtime.



**CUSTOMER SERVICE**

Have a question? Need to place an order? Call our friendly and knowledgeable in-house customer support team.

Table Of Contents

LAVINA GRINDERS	4-9
PROPANE	6-7
ELECTRIC	8-9
EDGERS	9
TOOLING	10-19
TOOLING GUIDE	10
LAVINA TOOLING	11-15
DIAMAPRO TOOLING	16-19
ERMATOR	20-27
BLASTPRO	28-31
SCRAPERS	29
SHOTBLASTERS	30-31
HAND TOOLS	30-34
HAND GRINDERS	32
SHROUDS & HOODS	33
CUP WHEELS	34-35
ACCESSORIES	35
BURNISHERS	36
SMITH	37
NSS SWEEPERS & SCRUBBERS	38-39

# Lavina



Lavina® grinders/polishers integrate an array of innovations that ensure ease of operation, outstanding maneuverability, dependable performance and excellent productivity that have earned the brand a respected place in concrete construction. Superabrasive is a manufacturer of Lavina® electric and propane driven grinders/polishers as well as burnishers, vacuums and diamond tooling. Niagara Machine is proud to be a master distributor of Lavina® products in the U.S.

Lavina's renowned X Series set the standard for concrete grinding and polishing. It was introduced as a line of grinders and polishers that increases productivity and minimizes time spent on maintenance.

This series has a wide range of machines,

*Lavina machines are well known for their ease of use, durability and versatility but with efficiency at top priority, the X series are designed to minimize machine maintenance and increase productivity.*

suitable for projects of all sizes. The Lavina® X series includes both electric and propane models, ranging from 16-inch and 20-inch machines for small residential projects to the largest 38-inch remote-controlled grinders for large commercial projects as well as 2 edger models, 7-inch and 13-inch, for working on edges and corners.

The X series has become increasingly popular for its ease of use, durability and versatility. However, there are many more upgrades included in this series that makes it a top choice. Some of these features include:

- Forced, belt driven planetary movement
- U joint floating head technology
- QuickChange tooling
- Clog free spraying system
- Upgraded inspection cover, handle, wheels and seals
- Quality manufacturing and constant design improvements

At Niagara, our staff is trained and factory certified in Lavina® machine handling. We can help you determine which Lavina® model is best for your specific job requirements and answer any questions you may have regarding your machine or project.



**Which Lavina® model is right for you?**

The answer depends on how big your project is, and how much time you have to complete it. Lavina® 20 is suitable for small residential projects, whereas large commercial projects require larger, more powerful machines such as Lavina® 25L, 30, 32, or 38.

Productivity rates are highly subjective as they depend on many variables, including the condition of the concrete; desired finish; any coatings to be removed; machine rpms and grinding pressure; diamond tools used, etc. The rates listed here are provided as a guide only.

MACHINE	PRODUCTIVITY (SF/HR)
20 INCH	275-500
25 INCH	500-900
30 INCH	600-1200
32 INCH	800-1200



Access window on the base provides a quick and easy access to the chain drive system.



With the new improved planetary drive, all L-32-X models can be used with 3 heads only for more aggressive grinding and with 6 heads for faster polishing.



New handle locking technology for tight and secure handle adjustment.



Metered water flow for more efficient grinding and polishing.



# propane



PROPANE	L-25G-X	L-30G-X	L-38GR-X
Propane Engine Capacity	36.8 CU IN	36.8 CU IN	61.0 CU IN
Engine	Kawasaki FS481V	Kawasaki FS481V	Kawasaki FX921V
Power	18 HP/3600Min	18 HP/3600Min	18 HP/3600Min
Machine Weight	590 LB	610 LB	1346 LB
Grinding Pressure	350 LB	375 LB	590/733/790 LB
Additional Weight	UP TO 128 LB	UP TO 128 LB	BUILT IN
# Of Additional Weight	2 x 64 LB	2 x 64 LB	N/A
Tool Holder RPM	570-1030 RPM	570-1030 RPM	416-750 RPM
Engine RPM	2000-3600 RPM	2000-36 RPM	2000-3600 RPM
Working Width	25 IN	30 IN	38 IN
Application	WET OR DRY	WET OR DRY	WET OR DRY
Dust-vacuum	YES	YES	YES
Water Feeding	INSIDE/FRONT	INSIDE/FRONT	INSIDE/FRONT
Dimensions L x W x H	76" x 27" x 47"	76" x 32" x 58"	110" x 39" x 53"



**L-38GR-X**

The L38GR-X is Lavina's heaviest and most powerful machine on the market. Featuring a 25 hp motor, built in weights for an adjustable grinding pressure up to 790 lbs, three 13.2-inch heads and forced planetary movement. The new updated double chain planetary system is designed to provide more durable planetary rotation, increasing both efficiency and productivity, at the same time providing easy maintenance. L38GR-X is a remote model, operator no longer has to stand behind to grind and polish.



**L-30G-X**

This cordless wet/dry grinder and polisher is suited for an array of floor finishes and hardnesses. The Lavina® 30G-X is a propane driven planetary grinder that has an entirely new redesigned chain driven planetary system for increasing the ease of maintenance. Easy access on top and bottom for quick access to the mechanics of the machine. New 13.2" QuickChange tool holding plate, along with new efficient access to the main belt allowing easier maintenance and cleaning. The 30G-X has a more durable frame with a locking system on the base and a low profile skirt/base for reaching under cabinets and shelving. Ideal for retail stores and warehouses.



**L-25G-X**

Entirely redesigned chain driven planetary system for increasing the ease of maintenance. The floating head accommodates QuickChange tooling, and foam plates are the only required attachment. This grinder also offers the clog-free spray system with optional internal or front spraying, U-joint technology for free floating in any direction.



**LB36G-S**

A unique "do-it-all floor" machine the LB36G-S can hone, polish, burnish, clean and maintain floors! It is a very efficient burnisher with a large 36-inch work path and heavy duty body (617 lbs weight), the LB36G-S will save you time on the job. Features include: a low profile base for buffing and polishing under racks and shelving, forced planetary drive system with 3 x 14-inch heads with flexible head design for optimal pad pressure, powered by certified 18HP 603cc Kawasaki Engine with Low Oil Shut Down and Safety Regulator Fuel System Can be used wet or dry.



**SHINEPRO® SYSTEM MAINTENANCE PADS**

ShinePro® Maintenance Pads are high quality diamond-impregnated pads available in 7, 8, 9, 13, 14, 16, 17, 20, 21, and 27 inch sizes for use with Lavina® machines, swing machines, burnishers, and auto scrubbers. The first of their kind for the Lavina® line, they provide the perfect solution for floor maintenance. ShinePro® pads can be used wet or dry, do not require wax or chemicals, and are a very environmentally friendly solution for maintaining floors. ShinePro® are safe for daily use.

# electric



L-20N-X

The 20N-X is a lightweight concrete grinder/polisher with powerful 7.5HP motor that delivers 380 lbs. of grinding pressure, ideal for small projects. This model can be used in wet or dry applications, eliminating the need for multiple machines. The unique nozzle-less, anti-clogging spray system enables the operator to continue working without the downtime required for nozzle cleaning. It also features new larger pneumatic wheels with gray rubber to eliminate tire marks and an upgraded timing belt for more efficient maintenance.



L-21-X

The Lavina® 21-X is a 21", forced planetary grinder ideally suited for small projects and for rental applications. The non-clogging water delivery system ensures optimal uptime and can be adjusted for internal or front spraying. This model also features an upgraded belt tensioner, inspection cover, belt replacement tool, with QuickChange tools and U-joint floating head technology.



L-25-X

The 25-X features a 10HP motor and grinding pressure of 555 lbs. to handle a variety of wet or dry prepping, polishing and floor maintenance projects. The floating head is compatible with QuickChange tools and also features security plate lock to keep tools from disengaging the head. U-joint floating head technology and along with a chain driven planetary system makes this grinder perfect for medium to large jobs.



L-25L-X

Forced, belt-driven feature enables the 25L-X to continue operating even if the drum belt breaks. A security plate lock keeps disengaged heads from ejecting from the machine. The nozzle-less, clog-free spray system allows the you to choose either internal or front spraying. QuickChange tools minimize tool replacement downtime. Now with a chain driven planetary system. A removable power cable facilitates cleanup.



L-32-X

The 32-X-HV has a 20HP/15KW motor that can deliver more than 800 lbs. of grinding pressure in a 32" working width. The model is ideal for large retail stores and warehouse applications, and can be used for grinding, polishing and floor maintenance. It has the new double-chain driven planetary system for more durable planetary rotation and two timing belts allowing more aggressive grinding with 3 heads and faster polishing with 6 heads. The 32-X-HV features Lavina's non-clogging spray system, U-joint floating head technology, security plate lock, and pump indicator light.



L-32M-X-HV

The 32M-X is one of the heaviest and most powerful grinding and polishing machines, featuring six 9-inch heads and forced planetary movement. This model is a 'high voltage Self-propelled Grinder. Being a self propelled unit the 32M-X allows operators to set multiple grinders to the same feed rate and speed/rpms for a consistent pattern. The operator needs to just glide the machine in the right direction with almost no effort.



ELECTRIC	L-20N-X	L-21-X	L-25-X	L-25L-X	L-32X	L-32M-X-HV
Horsepower	7.5 HP/5.5KW	2.45 hp/1.8 kw	10 HP	15 HP/11 KW	20 HP/15 KW	25 HP/18.5 KW
Voltage	1 or 3PH x 200-240V	1 ph x 100-115v	1 or 3 PH x 200-240V	3 PH x 200-240V	3 PH x 200-240 V	3 PH x 380-460V
Amperage	30 AMP	16 AMP	30 AMP	45 AMP	60 AMP	35 AMP
Dedicated Breaker	30 AMP	20 AMP	30 AMP	45 AMP	60 AMP	45 AMP
Gerneator Rec.	16.5 KW	7.5 KW	22.5 KW	33 KW	45 KW	45 KW
Machine Wheight	380 LB	219 LB	555 LB	660 LB	963 LB	1245 LB
Grinding Pressure	200 LB	113 LB	310 LB	404 LB	692 LB	715 LB
Additional Wheight	up to 96 LB	up to 74 lb	up to 128 LB	up to 128 LB	up to 128 LB	up to 256 LB
# of Additional Wht.	2 X 48 LB	4 x 18.5 LB	2 x 64 LB	2 x 64 LB	2 x 64 LB	4 x 64 LB
Working Width	20 IN	20 IN	25 IN	25 IN	32IN	32 IN
Application	WET OR DRY	WET OR DRY	WET OR DRY	WET OR DRY	WET OR DRY	WET OR DRY
Dust-vacuum	YES	YES	YES	YES	YES	YES
Water feeding	INSIDE/FRONT	PERIPHERAL	INSIDE/FRONT	INSIDE/FRONT	INSIDE/FRONT	INSIDE/FRONT
Dimensions L x W x H	53" x 21" x 43"	59.1" x 21.3" x 42"	76" x 27.2" x 46"	74" x 27" x 46"	92" x 34" x 44"	96" x 34" x 51"

# edgers



L-7X

The Lavina® 7-X Edger is ideal for residential and small commercial jobs. The L-7-X features Quick-Change tooling system, which includes a new holding plate for more efficient access to the main belt and easier maintenance.



L-13-X

This Lavina® 13-X combines incredible innovation with ease of use. Driven by a 5.5HP, single-phase 220V motor, the 13-X features grinding heads that can be set to the right or left, and can be adjusted to blend edge work.

ELECTRIC	L-7-X	L-13-X
Horsepower	2HP/1.5KW	5.5HP/4KW
Voltage	1PH x 110-120V	1PH X 208-240V
Amperage	15 AMP	16 AMP
Dedicated Breaker	15 AMP	20 AMP
Gerneator Rec.	4.5KW	9 KW
Machine Weight	137 LB	236 LB
Grinding Pressure	50 LB	57 LB
Additional Weight	UP TO 22 LB	UP TO 22 LB
# of Additional Wht.	4 x 5.5 LB	4 X 5.5 LB
Working Width	7 IN	13.2 IN
Application	DRY	WET OR DRY
Dust-vacuum	YES	YES
Water feeding	NO	OPTIONAL
Dimensions L x W x H	31 IN x 16 IN x 44 IN	47.6" X 23.6" X 36.1"



# tooling



## concrete polishing guide

### SOFT CONCRETE

STEP 1	X2B-SC-0030	GRIT 30 YELLOW 2 BUTTON	500 RPM
STEP 2	X2B-SC-0070	GRIT 70 YELLOW 2 BUTTON	500 RPM
STEP 3	CA3-50	3" CALIBRA CERAMIC 50 GRIT	700 RPM
STEP 4	CA3-100	3" CALIBRA CERAMIC 100 GRIT	700 RPM
STEP 5	NS-0200D	3" NATO PAD 200 GRIT	800 RPM
STEP 6	NS-0400D	3" NATO PAD 400 GRIT	800 RPM
STEP 7	NS-0800D	3" NATO PAD 800 GRIT	1100 RPM
STEP 8	VF-9-1800	9"V-HARR FELT PAD 1800 GRIT	1100 RPM
STEP 9	VF-9-3500	9"V-HARR FELT PAD 3500 GRIT	1100 RPM
STEP 10	VF-9-BUFF	9"V-HARR FELT PAD BUFF	1100 RPM

### HARD CONCRETE

STEP 1	X2B-HC-0030	GRIT 30 RED 2 BUTTON	500 RPM
STEP 2	X2B-HC-0070	GRIT 70 RED 2 BUTTON	500 RPM
STEP 3	CA3-50	3" CALIBRA CERAMIC 50 GRIT	700 RPM
STEP 4	CA3-100	3" CALIBRA CERAMIC 100 GRIT	700 RPM
STEP 5	NS-0200D	3" NATO PAD 200 GRIT	800 RPM
STEP 6	NS-0400D	3" NATO PAD 400 GRIT	800 RPM
STEP 7	NS-0800D	3" NATO PAD 800 GRIT	1100 RPM
STEP 8	VF-9-1800	9"V-HARR FELT PAD 1800 GRIT	1100 RPM
STEP 9	VF-9-3500	9"V-HARR FELT PAD 3500 GRIT	1100 RPM
STEP 10	VF-9-BUFF	9"V-HARR FELT PAD BUFF	1100 RPM

### MEDIUM CONCRETE

STEP 1	X2B-MC-0030	GRIT 30 GRAY 2 BUTTON	500 RPM
STEP 2	X2B-MC-0070	GRIT 70 GRAY 2 BUTTON	500 RPM
STEP 3	CA3-50	3" CALIBRA CERAMIC 50 GRIT	700 RPM
STEP 4	CA3-100	3" CALIBRA CERAMIC 100 GRIT	700 RPM
STEP 5	NS-0200D	3" NATO PAD 200 GRIT	800 RPM
STEP 6	NS-0400D	3" NATO PAD 400 GRIT	800 RPM
STEP 7	NS-0800D	3" NATO PAD 800 GRIT	1100 RPM
STEP 8	VF-9-1800	9"V-HARR FELT PAD 1800 GRIT	1100 RPM
STEP 9	VF-9-3500	9"V-HARR FELT PAD 3500 GRIT	1100 RPM
STEP 10	VF-9-BUFF	9"V-HARR FELT PAD BUFF	1100 RPM

### EXTRA HARD CONCRETE

STEP 1	X2B-HCG-0030	GRIT 30 GOLD 2 BUTTON	500 RPM
STEP 2	X2B-HCG-0070	GRIT 70 GOLD 2 BUTTON	500 RPM
STEP 3	CA3-50	3" CALIBRA CERAMIC 50 GRIT	700 RPM
STEP 4	CA3-100	3" CALIBRA CERAMIC 100 GRIT	700 RPM
STEP 5	NS-0200D	3" NATO PAD 200 GRIT	800 RPM
STEP 6	NS-0400D	3" NATO PAD 400 GRIT	800 RPM
STEP 7	NS-0800D	3" NATO PAD 800 GRIT	1100 RPM
STEP 8	VF-9-1800	9"V-HARR FELT PAD 1800 GRIT	1100 RPM
STEP 9	VF-9-3500	9"V-HARR FELT PAD 3500 GRIT	1100 RPM
STEP 10	VF-9-BUFF	9"V-HARR FELT PAD BUFF	1100 RPM

# metals

Superabrasive's QuickChange metal bond segments are among the best diamonds for floor grinding on the market. They come in several metal bonds designed specifically for the different types of concrete hardness:

**YELLOW segments - for Soft concrete, typically under 2500 psi**

**GREY segments - for Medium concrete, between 2500 and 4000 psi**

**RED segments - for Hard concrete, between 4000 and 5500 psi**

**GOLD segments - for Extra Hard Concrete, over 5500 psi**

**WHITE segments - for Super Hard concrete, over 7000 psi**

The QC metal bond diamonds are offered with one and two round or rectangular / bar segments. Choosing between one or two segments

allows the operator to control the speed and aggressiveness of the cut. Two button / segment tools are designed for heavier machines, and are not recommended for machines smaller than 25 inches. Single button / segment tools are designed for lighter machines, or where aggressive stock removal is required. We recommend using single-segment tools for the first step even with heavier machines for faster opening of the concrete. All QC tools easily slide in and out of the metal grinding heads, with no bolting required and no separate plates needed.

We offer a variety of tooling plates for other manufacturers' floor grinders as well. You can easily switch to using Superabrasive's QuickChange metal tools with almost any grinder.



QC SINGLE BUTTON - 10MM THICKNESS

SOFT	MEDIUM	HARD	X-HARD
X1B-SC 0006	X1B-MC 0006	X1B-HC 0014	X1B-HCG 0014
X1B-SC 0014	X1B-MC 0014	X1B-HC 0030	X1B-HCG 0030
X1B-SC 0030	X1B-MC 0030	X1B-HC 0050	X1B-HCG 0050
X1B-SC 0050	X1B-MC 0050	X1B-HC 0070	X1B-HCG 0070
X1B-SC 0070	X1B-MC 0070	X1B-HC 0120	X1B-HCG 0120
X1B-SC 0120	X1B-MC 0120		



QC DOUBLE BUTTON - 10MM THICKNESS

SOFT	MEDIUM	HARD	X-HARD
X2B-SC 0006	X2B-MC 0006	X2B-HC 0014	X2B-HCG 0014
X2B-SC 0014	X2B-MC 0014	X2B-HC 0030	X2B-HCG 0030
X2B-SC 0030	X2B-MC 0030	X2B-HC 0050	X2B-HCG 0050
X2B-SC 0050	X2B-MC 0050	X2B-HC 0070	X2B-HCG 0070
X2B-SC 0070	X2B-MC 0070	X2B-HC 0120	X2B-HCG 0120
X2B-SC 0120	X2B-MC 0120		



QC SINGLE SEGMENT - 10MM THICKNESS

SOFT	MEDIUM	HARD	X-HARD	SUPER HARD
X1S-SC 0006	X1S-MC 0006	X1S-HC 0014	X1S-HCG 0014	X1S-SHC 0030
X1S-SC 0014	X1S-MC 0014	X1S-HC 0030	X1S-HCG 0030	X1S-SHC 0050
X1S-SC 0030	X1S-MC 0030	X1S-HC 0050	X1S-HCG 0050	X1S-SHC 0070
X1S-SC 0050	X1S-MC 0050	X1S-HC 0070	X1S-HCG 0070	X1S-SHC 0120
X1S-SC 0070	X1S-MC 0070	X1S-HC 0120	X1S-HCG 0120	
X1S-SC 0120	X1S-MC 0120			



QC DOUBLE SEGMENT - 10MM THICKNESS

SOFT	MEDIUM	HARD	X-HARD	SUPER HARD
X2S-SC 0006	X2S-MC 0006	X2S-HC 0014	X2S-HCG 0014	X2S-SHC 0030
X2S-SC 0014	X2S-MC 0014	X2S-HC 0030	X2S-HCG 0030	X2S-SHC 0050
X2S-SC 0030	X2S-MC 0030	X2S-HC 0050	X2S-HCG 0050	X2S-SHC 0070
X2S-SC 0050	X2S-MC 0050	X2S-HC 0070	X2S-HCG 0070	X2S-SHC 0120
X2S-SC 0070	X2S-MC 0070	X2S-HC 0120	X2S-HCG 0120	
X2S-SC 0120	X2S-MC 0120			

QC WITH PCD AND METAL SEGMENT

	X1B-PCD1 QC Trapezoid Pad with 1 Metal Button & 1 PCD Segment		X-PCD QC Trapezoid Pad with 2 PCD Segment
	X1B-PCDL (LEFT) QC Trapezoid Pad with 1 Metal Button & 1 PCD Segment		X-PCD-L (LEFT) QC Trapezoid Pad with 2 PCD Segment
	X1B-PCD2 QC Trapezoid Pad with 1 Metal Button & 2 PCD Segments		X-PCD-SB QC Trapezoid Pad with 2 PCD Segment & Sacrificial Bar
	X1B-PCD2-L (LEFT) QC Trapezoid Pad with 1 Metal Button & 2 PCD Segments.		X-PCD-SB-L QC Trapezoid Pad with 2 PCD Segment & Sacrificial Bar

## prep & coating removal



BUSH HAMMERS - X-BH

- Creates a bush hammered profile, ideal for exterior applications
- Uses standard QuickChange technology, sliding easily in and out the plate with no bolting required
- Fits all Lavina® grinders as well as all other grinders using a QC adapter plate



**BRAZED PADS FOR LIPPAGE REMOVAL**

Wet Only - 3 & 4 Inches  
 Recommended for lippage grinding, floor levelings,  
 as well as thin coating removal.

CEM3-030BR - 3"
CEM3-050BR - 3"
CEM3-100BR - 3"
CEM3-200BR - 3"
CEM4-030BR - 4"
CEM4-050BR - 4"
CEM4-100BR - 4"
CEM4-200BR - 4"



**SA SUPERTHICK DISCS METAL BOND**

3 Inches - 4MM  
 Ideal for grinding concrete, natural stone, self-leveling  
 and terrazzo floors. A great first cut with a smooth  
 scratch pattern for an even floor finish

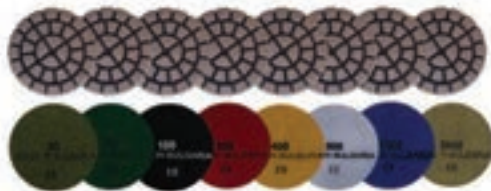
SA SUPERTHICK  
 W/ QUICKCHANGE  
 ATTACHMENT

XQC-SA-046MB
XQC-SA-070MB
XQC-SA-120MB

SA SUPERTHICK W/  
 VELCRO  
 ATTACHMENT

SA-046MB
SA-070MB
SA-120MB
SA-220MB
SA-400MB

# transitional



**HD RESIN DISCS**

Wet and Dry - 3 & 4 Inches - 8mm  
 Designed to withstand the weight of even the heaviest  
 machines. Add weights if using on lighter machines.

HD RESIN DISC  
 DRY & WET 3"

HD-3-0030
HD-3-0050
HD-3-0100
HD-3-0200
HD-3-0400
HD-3-0800
HD-3-1500
HD-3-3000

HD RESIN DISC  
 DRY & WET 4"

HD-4-0030
HD-4-0050
HD-4-0100
HD-4-0200
HD-4-0400
HD-4-0800
HD-4-1500
HD-4-3000



**METAL & COPPER RINGS FOR STONE**

Wet Only - 3 Inches - 6mm  
 An aggressive solution for removing stock and deep  
 scratches in stone surfaces. Not recommended for  
 concrete and engineered stone.

SAMBR3-46
SAMBR3-70
SAMBR3-120



**HD COPPER DISCS**

Wet Only - 3 Inches - 8MM  
 Ideal as the first grinding steps on  
 large projects, provides a fast cut and  
 long tool life.

HD-3-CO-0050-R
HD-3-CO-0100-R
HD-3-CO-0200-R
HD-3-CO-0400-R



**WAFFEL COPPER DISCS**

Wet & Dry - 9 Inches - 7MM  
 Designed to remove scratches and small lippage on  
 new or existing natural stone and decorative concrete  
 floors.

WAFF-9-CO-0030
WAFF-9-CO-0050
WAFF-9-CO-0070
WAFF-9-CO-0120
WAFF-9-CO-0220



**CALIBRA CERAMIC DISCS**

For Hard & Medium Concrete 3 Inch - 10mm Thick  
 Designed for removal of scratches left behind by  
 metal bond grinding steps.

CA3-30 - 30 GRIT
CA3-50 - 50 GRIT
CA3-100 - 100 GRIT
CA3-200 - 200 GRIT

**CEMENTINA GRINDING DISCS**

Terrazzo Bond For Soft Concrete  
 Wet Only - 3 Inch

CEM-0030T-30 GRIT
CEM-0070T-70 GRIT

Terrazzo Bond For Hard & Medium Concrete  
 Wet Only - 3 Inch

CEM-0030M - 30 GRIT
CEM-0070M - 70 GRIT
CEM-0120M - 120 GRIT
CEM-0220M - 70 GRIT



# polish



## NATO POLISHING DISCS

NATO patented polishing discs have set the standard for all other polishing pads. Wide channels and a unique design allow for work on a cleaner surface, ensuring a quality polish. NATO discs feature a thick 12mm layer of resin and diamonds for extra long life. Also available in a thinner "economy" style (6mm). Three discs per head is recommended for optimum performance.

### NATO DISC DRY & WET 3"

NS-0030D
NS-0050D
NS-0100D
NS-0200D
NS-0400D
NS-0600D
NS-0800D
NS-1500D
NS-3000D

### NATO DISC WET ONLY 3"

NS-0030
NS-0050
NS-0100
NS-0200
NS-0400
NS-0600
NS-0800
NS-1500
NS-3000

### NATO DISC DRY & WET 3" ECONOMY

NS-0030-E
NS-0050-E
NS-0100-E
NS-0200-E
NS-0400-E
NS-0600-E
NS-0800-E
NS-1500-E
NS-3000-E

### NATO DISC DRY & WET 4"

NS-4-0030D
NS-4-0050D
NS-4-0100D
NS-4-0200D
NS-4-0400D
NS-4-0600D
NS-4-0800D
NS-4-1500D
NS-4-3000D



## WAFFEL POLISHING PADS

WAFFELS are a QuickChange style resin pad offered in several sizes: 7inch with two rows of segments for Lavina® 7" edger, 9 inch with three rows of segments for larger, heavier machines. 13.5 inch for L-30G and L-30L. WAFFEL pads can be used wet and dry. Also offered in HP bond for Extra Hard concrete applications (dry only) and Copper bond for lippage removal onstone surfaces.

### WAFFEL PADS DRY & WET 7" 2 ROWS

WAFF-7-0030D
WAFF-7-0050D
WAFF-7-0100D
WAFF-7-0200D
WAFF-7-0400D
WAFF-7-0600D
WAFF-7-0800D
WAFF-7-1500D
WAFF-7-3000D

### WAFFEL PADS DRY & WET 9" 3 ROWS

WAFF-9-0030D
WAFF-9-0050D
WAFF-9-0100D
WAFF-9-0200D
WAFF-9-0400D
WAFF-9-0600D
WAFF-9-0800D
WAFF-9-1500D
WAFF-9-3000D



## V-HARR PREMIUM POLISHING PADS

V-HARRs are one of Superabrasive's most versatile and successful products, designed for mechanically polishing and restoring concrete. V-HARR is also ideal for terrazzo and hard stone floors. Dry use is strongly recommended for concrete applications. V-HARR will produce remarkable gloss results on black granite when used wet. Offered in all popular sizes for use with any planetary polisher.

### V-HARR PAD DRY 5" 3 ROWS OF RESIN

VF-5-0050
VF-5-0120
VF-5-0220
VF-5-0400
VF-5-0600
VF-5-0800
VF-5-1800
VF-5-3500
VF-5-BUFF

### V-HARR PAD DRY 7" 2 ROWS OF RESIN

VF-7-0050
VF-7-0120
VF-7-0220
VF-7-0400
VF-7-0600
VF-7-0800
VF-7-1800
VF-7-3500
VF-7-BUFF

### V-HARR PAD DRY 8" 2 ROWS OF RESIN

VF-8-0050
VF-8-0120
VF-8-0220
VF-8-0400
VF-8-0600
VF-8-0800
VF-8-1800
VF-8-3500
VF-8-BUFF

### V-HARR PAD DRY 9" 3 ROWS OF RESIN

VF-9-0050
VF-9-0120
VF-9-0220
VF-9-0400
VF-9-0600
VF-9-0800
VF-9-1800
VF-9-3500
VF-9-BUFF

### V-HARR PAD DRY 10.75" 3 ROWS OF RESIN

VF-10.75-0050
VF-10.75-0120
VF-10.75-0220
VF-10.75-0400
VF-10.75-0600
VF-10.75-0800
VF-10.75-1800
VF-10.75-3500
VF-10.75-BUFF

### V-HARR PAD DRY 13.5" 2 ROWS OF RESIN

VF-13.5-0050
VF-13.5-0120
VF-13.5-0220
VF-13.5-0400
VF-13.5-0600
VF-13.5-0800
VF-13.5-1800
VF-13.5-3500
VF-13.5-BUFF

# edge work



TURBO CUPS WITH  
THREADS 4 INCH

TC4-5/8-11-C (COARSE)
TC4-5/8-11-M (MEDIUM)
TC4-5/8-11-F (FINE)

TURBO CUPS WITH  
THREADS 5 INCH

TC5-5/8-11-C (COARSE)
TC5-5/8-11-M (MEDIUM)
TC5-5/8-11-F (FINE)



3N COPPER PADS  
4 INCH

3N-4-CO030
3N-4-CO040
3N-4-CO070
3N-4-CO120
3N-4-CO220

3N COPPER PADS  
5 INCH

3N-5-CO030
3N-5-CO040
3N-5-CO070
3N-5-CO120
3N-5-CO220

## TURBO CUPS WITH THREADS

Turbo cups with threads were specifically designed for grinding and shaping stone and concrete surfaces. Available in 4 and 5 inch sizes and are aggressive cutters at very high speeds on even the hardest of surfaces. With a 5/8-11 thread, turbo cups are available in coarse, medium and fine grits.

## 3N COPPER PADS

3N Copper pads are an excellent solution for corner grinding and honing. They are available in 4 and 5 inch sizes for use with any hand-held grinder.



## CORNERPRO POLISHING SYSTEM

The CornerPro polishing system is your solution for work in tight areas. CornerPro is designed to perfect the inside of difficult 90-degree corners and areas where other tooling cannot reach. CornerPro pads feature a special triangular shape for reaching the furthest depths of corners and edges. We offer CornerPro in brazed, resin, and electroplated bonds to accommodate various applications.

CORNERPRO  
BRAZED

3ANG-BR-0046

CORNERPRO  
ELECTROPLATED

3ANG-EL-0050
3ANG-EL-0120
3ANG-EL-0220
3ANG-EL-0400
3ANG-EL-0600

CORNERPRO  
RESIN

3ANG-ES-0400
3ANG-ES-0600
3ANG-ES-0800
3ANG-ES-1800

# 3 step polishing system



STEP 1 #3S-1    STEP 2 #3S-2    STEP 3 #3S-3

## THE NEW! 3-STEP CONCRETE POLISHING SYSTEM

With the new Lavina® three-step concrete polishing system you can polish concrete in just 3 easy steps! Incredible savings of time and money! Our 3-step system can be used on any concrete and any floor grinder using the standard velcro attachment. Floors should be prepped / cut to 120 grit metal or hybrid step, and densified prior to starting with step #1.



# maintain



## ShinePro® Diamond System

The ShinePro® diamond system consists of diamond pads and screens, and provides outstanding results on polished concrete, natural stone, terrazzo, VCT, resin floors and overlays. ShinePro® is one of the most versatile and efficient solutions for floor restoration and maintenance. It does not require any special equipment, or the use of any chemicals, and therefore it is also a very environmentally friendly solution. The ShinePro® system can be used with plain water or with a neutral ph soap for daily cleaning.

### ShinePro® DIAMOND PADS

The ShinePro® diamond pads come in 5 grit sizes - 220, 400, 800, 1800 and Buff, but most maintenance schedules require a single step - ShinePro® BUFF. ShinePro® BUFF is a fine grit diamond pad for micro polishing and mechanically cleaning sealed and non-sealed floors. It is ideal for daily autoscrubbing as well as for periodic burnishing. It will improve the floor shine, without removing sealers or wax, or causing any orange peel effect. ShinePro® pads can be used dry on high speed burnishers, and wet on auto scrubbers, buffers, swing machines, grinders and other floor machines.



ShinePro® PADS  
13 INCH

DCP-13-0220
DCP-13-0400
DCP-13-0800
DCP-13-1800
DCP-13-BUFF

ShinePro® PADS  
17 INCH

DCP-17-0220
DCP-17-0400
DCP-17-0800
DCP-17-1800
DCP-17-BUFF

ShinePro® PADS  
21 INCH

DCP-21-0220
DCP-21-0400
DCP-21-0800
DCP-21-1800
DCP-21-BUFF

ShinePro® PADS  
27 INCH

DCP-27-0220
DCP-27-0400
DCP-27-0800
DCP-27-1800
DCP-27-BUFF

### ShinePro® SCREENS

ShinePro® screens are ideal for aggressive cleaning and restoration of floors that might otherwise require a lower grit resin step. Typically, you can start with 600 grit diamond screens and continue with ShinePro® pads. Heavily etched floors may require starting with 400 or 220 grit screens. ShinePro® screens are offered in many diameters: 13", 14", 15", 16", 17", 18", 20", 21", 24" and 27", and can be used on weighted swing machines for smaller areas, or burnishers and autoscrubbers for larger areas.



ShinePro®  
DIAMOND SCREENS  
ELECTROPLATED  
13"

DS-13-0220
DS-13-0400
DS-13-0600

ShinePro®  
DIAMOND SCREENS  
ELECTROPLATED  
17"

DS-17-0220
DS-17-0400
DS-17-0600

ShinePro®  
DIAMOND SCREENS  
ELECTROPLATED  
21"

DS-21-0220
DS-21-0400
DS-21-0600

ShinePro®  
DIAMOND SCREENS  
ELECTROPLATED  
27"

DS-27-0220
DS-27-0400
DS-27-0600

## shinepro floor maintenance guide

### Polished Concrete Maintenance:

Clean daily with ShinePro® BUFF pads using an autoscrubber, and burnish periodically (weekly or monthly). For slightly dull and high traffic areas, burnish with ShinePro® 1800.

### Concrete Light & Medium Restoration:

Begin with ShinePro® 800 or 1800 grit for light restoration, or 400 grit for medium restoration. Scrub daily with each grit finishing with ShinePro® BUFF. A high speed burnisher can be used for faster results and higher gloss.

### Spot Repair for Concrete Floors:

Start with ShinePro® Screens 600 grit using a buffer, burnisher or autoscrubber. Heavily etched floors may require 400 grit.

### Natural Stone Floor Maintenance:

Clean daily with ShinePro® BUFF. Lower grits may be added prior to this step, depending on

the level of polish already present.

### VCT Floor Maintenance:

Clean daily and burnish weekly with ShinePro® BUFF. To remove scratches and yellowing of wax start with 1800 grit, or 800 grit for dark yellowing and heavy staining. To strip wax or clean tile, start with 220 or 400 grit. The ShinePro® VCT process offers outstanding results and cost savings. It will extend the life of wax with daily maintenance and cut labor and chemical cost in half.

### Ceramic Tiles Maintenance:

Clean daily with ShinePro® 800, 1800, and BUFF. Start with 400 grit, if there is residue present.

### Resin Floor Maintenance:

Clean daily with ShinePro® 1800 & BUFF pads.





# metals

Diamapro Systems' line of tooling includes metal bond diamond tools to fit most grinder manufacturer's plates. Metal bond diamonds are available to tackle any project from heavy surface preparation to opening a floor for polish. Use the chart below to identify the proper bond for every concrete application:

## TRAPEZOIDS

The trapezoid style diamond is one of the most commonly found in the industry. This connection piece is compatible with a variety of plates including: SASE®, CPS®, Diamatic®, National Mongrel®, and Magnetic Plates.



### BARS

Bars are ideal for removal and prep projects. Bars can also be used on floors being polished, but will leave deeper scratches that take longer to be polished out. 10mm

SOFT	MEDIUM	HARD
DT-TP-2BAR-SC-0016	DT-TP-2BAR-MC-0016	DT-TP-2BAR-HC-0016
DT-TP-2BAR-SC-3040	DT-TP-2BAR-MC-3040	DT-TP-2BAR-HC-3040
	DT-TP-2BAR-MC-6080	



### BUTTONS

Buttons are to be used on floors that are being polished. They can also be used for surface prep, but are less aggressive than bar segments. 10mm

SOFT	MEDIUM	HARD
DT-TP-2BUT-SC-0016	DT-TP-2BUT-MC-0016	DT-TP-2BUT-HC-0016
DT-TP-2BUT-SC-3040	DT-TP-2BUT-MC-3040	DT-TP-2BUT-HC-3040
DT-TP-2BUT-SC-6080	DT-TP-2BUT-MC-6080	DT-TP-2BUT-HC-6080
DT-TP-2BUT-SC-120150	DT-TP-2BUT-MC-120150	DT-TP-2BUT-HC-120150

## WING BACK

The Diamapro Wing Back Diamonds are compatible with HTC™ grinders.



### BARS

Bars are ideal for removal and prep projects. Bars can also be used on floors being polished, but will leave deeper scratches that take longer to be polished out. 10mm

XX-SOFT	X-SOFT	SOFT	MEDIUM	HARD
		DT-WB-2BAR-SC-0016	DT-WB-2BAR-MC-0016	DT-WB-2BAR-HC-0016
DT-WB-2BAR-2XSC-3040	DT-WB-2BAR-XSC-3040	DT-WB-2BAR-SC-3040	DT-WB-2BAR-MC-3040	DT-WB-2BAR-HC-3040
			DT-WB-2BAR-MC-6080	



### BUTTONS

Buttons are to be used on floors that are being polished. They can also be used for surface prep, but are less aggressive than bar segments. 10mm

SOFT	MEDIUM	HARD
DT-WB-2BUT-SC-0016	DT-WB-2BUT-MC-0016	DT-WB-2BUT-HC-0016
DT-WB-2BUT-SC-3040	DT-WB-2BUT-MC-3040	DT-WB-2BUT-HC-3040
DT-WB-2BUT-SC-6080	DT-WB-2BUT-MC-6080	DT-WB-2BUT-HC-6080
DT-WB-2BUT-SC-120150	DT-WB-2BUT-MC-120150	DT-WB-2BUT-HC-120150



## UNIVERSAL METAL PUCKS

Our Universal Metal Pucks are designed to fit several different machine plates. The middle hole allows for compatibility with 2" tapered plugs commonly found in STI® and Terrco® grinders. These pucks also include the same 3 hole pattern seen in industry standard trapezoids allowing for compatibility with SASE® and CPS® grinders. The pucks will also attach to magnetic plates.



### 10 SEGS

Our 10 Segs provide a large grinding footprint helping the grinder reach maximum refinement faster. These are ideal for heavier grinders. 10 Segs can be used on prep or polish jobs. Our 10 Seg diamonds provide excellent life at 10mm thickness.

X-SOFT	SOFT	MEDIUM	HARD	X-HARD
DT-PN-10SEG-XSC-0016	DT-PN-10SEG-SC-0016	DT-PN-10SEG-MC-0016	DT-PN-10SEG-HC-0016	
DT-PN-10SEG-XSC-3040	DT-PN-10SEG-SC-3040	DT-PN-10SEG-MC-3040	DT-PN-10SEG-HC-3040	DT-PN-10SEG-XHC-3040
DT-PN-10SEG-XSC-6080	DT-PN-10SEG-SC-6080	DT-PN-10SEG-MC-6080	DT-PN-10SEG-HC-6080	DT-PN-10SEG-XHC-6080
DT-PN-10SEG-XSC-120150	DT-PN-10SEG-SC-120150	DT-PN-10SEG-MC-120150	DT-PN-10SEG-HC-120150	DT-PN-10SEG-XHC-120150



### 6 SEGS

Designed for aggressive prep and removal. These diamonds are only available in 6 grit. 6mm.

SOFT	MEDIUM	HARD
DT-PN-6SEG-MC-006	DT-PN-6SEG-MC-006	DT-PN-6SEG-MC-006



### 2 BAR

These diamonds are excellent for floor prep and light removal. 10mm. Medium concrete - Gray

DT-PN-2BAR-MC-3040

## SLIDE STYLE 2 BUTTON BACK

Our Slide Style 2 Button Backed diamonds are compatible with STI® EG plates and Husqvarna® redi-lock plates.



### 10SEGS

Our 10 Segs provide a large grinding footprint helping the grinder reach maximum refinement faster. These are ideal for heavier grinders. 10 Segs can be used on prep or polish jobs. Our 10 Seg diamonds provide excellent life at 10mm thickness.

X-SOFT	SOFT	MEDIUM	HARD	X-HARD
	DT-2B-10SEG-SC-0016	DT-2B-10SEG-MC-0016	DT-2B-10SEG-HC-0016	
DT-2B-10SEG-XSC-3040	DT-2B-10SEG-SC-3040	DT-2B-10SEG-MC-3040	DT-2B-10SEG-HC-3040	DT-2B-10SEG-XHC-3040
	DT-2B-10SEG-SC-6080	DT-2B-10SEG-MC-6080	DT-2B-10SEG-HC-6080	DT-2B-10SEG-XHC-6080
	DT-2B-10SEG-SC-120150	DT-2B-10SEG-MC-120150	DT-2B-10SEG-HC-120150	DT-2B-10SEG-XHC-12-0150



### 6 SEGS

Designed for aggressive prep and removal. These diamonds are only available in 6 grit. 6mm

DT-2B-6SEG-MC-006



### 2 BAR

These diamonds are excellent for floor prep and light removal. 10mm

DT-2B-2BAR-SC-3040

DT-2B-2BAR-MC-3040

## PCD'S

PCDs or Polycrystalline Diamonds are designed for aggressive removal of coatings, thin set, and elastomeric glues. PCDs are an extremely hard and wear resistant diamond. The diamond grips elastomeric media and tears it from the concrete surface. These diamonds will leave a rough profile if allowed to grind into the concrete.

### TRAP BACK 2 PCD WITH 18 GRIT WEAR BAR



### WING BACK 5 PCD'S



### PIN STYLE PCD WITH WEAR BUTTON



### SLIDE STYLE PCD WITH WEAR BUTTON



## TRANSITIONAL OR HYBRID DIAMONDS

Diamapro Transitional diamonds are designed to be run on a floor opened by metal bond diamonds. These diamonds are composed of a resin and metal mixture designed to take out the aggressive scratches left by metal steps. Hybrid diamonds are to be run at a lower grit number than the previous metal step. A 60/80 grit metal grind would require a 50 grit hybrid diamond to remove the scratches. Similarly, a 120/150 grit metal grind is to be followed by a 100 grit hybrid diamond. All of our hybrid diamonds can be attached via velcro.

### 3" METAL-RESIN HYBRID PUCK - WET/DRY 10MM



### 3" POST STYLE HYBRID DIAMOND - WET/DRY 15MM



### 3" METAL-RESIN HYBRID PAD - DRY ONLY 5MM



### 3" TERRAZZO PAD - WET ONLY 8MM



## RESIN POLISHING PADS

Resin Polishing Pads are to be run after hybrid diamonds have removed metal scratches from the floor. Our Diamapro polishing pads are available in 5 grits: 200, 400, 800, 1500, and 3000.

They are designed to be used sequentially starting with 200 grit and ending with 3000. The polishing process can be stopped after any grit. Most projects are polished to 800 grit at a minimum, as this is where gloss and DOI start to heavily increase.

### 3" POLISHING PUCKS

Our Diamapro Polishing Pucks are designed to be run under grinders of any weight class. Our polishing pucks provide excellent DOI and Gloss with best results after 800 grit or higher. Wet/Dry. 10mm



DT-PPUCK3-RES-200
DT-PPUCK3-RES-400
DT-PPUCK3-RES-800
DT-PPUCK3-RES-1500
DT-PPUCK3-RES-3000

### 3" POLISHING PADS

Diamapro Polishing Pads are composed of a white resin mixture that prevents resin color transfer producing a more natural concrete color floor. Polishing Pads provide a large footprint making them ideal for heavy direct drive machines, however they can be utilized under any grinder. Our polishing pads are 5 mm thick providing more diamond than the competition. Dry Only. 8mm

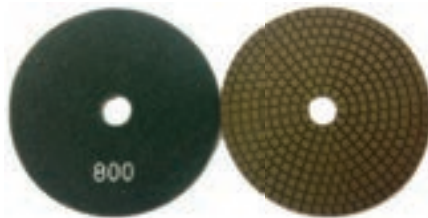


DT-PPAD3-RES-200
DT-PPAD3-RES-400
DT-PPAD3-RES-800
DT-PPAD3-RES-1500
DT-PPAD3-RES-3000

## EDGE WORK

### 5" HAND POLISHING RESIN PADS

Our Diamapro Resin Pads are perfect for polishing concrete counter-tops, steps and edges. Designed for handheld polishers, they allow you to get closer to edges and other hard to reach areas. Wet/Dry



DT-5HPP50
DT-5HPP100
DT-5HPP200
DT-5HPP400
DT-5HPP800
DT-5HPP1500
DT-5HPP3000

### 5" HAND POLISHING HONEYCOMB PADS

Diamapro Honeycomb Pads provide a more aggressive design so they can be used to remove scratches left behind by metal bond cup wheels. With the "felt like" feel, they'll will be no resin transfer and provide a high quality finish to any concrete project. Designed for hand polishers. Wet/Dry



DT-5HCP-30
DT-5HCP-50
DT-5HCP-100
DT-5HCP-200
DT-5HCP-400
DT-5HCP-800
DT-5HCP-1500
DT-5HCP-3000

## CERAMIC SHINE CUP WHEELS

Ceramic Shine Cup Wheels is a newer technology that improves on the quality of edge work. By using Ceramic's, this reduces the scratches and gouges that traditional metal bond cup wheels leave. They can also be used to grind out scratches left by metal bond cup wheels. Works well on Soft, Medium or Hard Concrete. Available in 5" threaded and 7" threaded. Wet/Dry

### 5" CERAMIC SHINE CUP WHEEL THREADED



DT-CW-5-CER-030-5/8-11
DT-CW-5-CER-050-5/8-11
DT-CW-5-CER-100-5/8-11
DT-CW-5-CER-200-5/8-11
DT-CW-5-CER-400-5/8-11

### 7" CERAMIC SHINE CUP WHEEL THREADED



DT-CW-7-CER-030-5/8-11
DT-CW-7-CER-050-5/8-11
DT-CW-7-CER-100-5/8-11
DT-CW-7-CER-200-5/8-11
DT-CW-7-CER-400-5/8-11

# ermator

*While you may be focused on grinders and polishers for your surface prep job, vacuums, separators and air scrubbers cannot be forgotten. Ermator® extraction systems are extremely important in maintaining a healthy and safe work environment during your floor prep process.*

Ermator® is a leading manufacturer of HEPA vacuums and air scrubbers that offer maximum safety and protection for both people and the environment. Ermator® extractor systems are compatible with all diamond surface grinders, floor sanders, scarifiers, power saws, and drills.

**Makes surface prep, grinding and polishing a quick and easy task:**

Ermator® equipment maximizes grinder performance, increases surface visibility and diamond life, reduces dust contamination between cuts, ensures high volume recovery without clogging or interruption, and minimizes dust handling.

**All equipment meets or exceeds new OSHA standards:**

OSHA has recently rewritten their standards for dust control to be more rigid in order to decrease the risk of health hazards on the job site. The sweeping and blowing of dust through the air can create inhalation problems for everyone in the area and for this reason, OSHA has suggested using HEPA filter vacuums to control the dust. Fortunately, every Ermator® vacuum meets or exceeds OSHA's standards for dust control and ensures safety for the user and the environment.

The inhalation of construction dust has been shown to be a cause of cancer, reduced lung capacity, heart disease, allergies and silicosis, a disease of the lungs due to the breathing of dust containing crystalline silica particles. Ermator® extractor systems are recognized throughout the concrete floor polishing industry as a proven means to eliminating exposure to crystalline silica through the fast, efficient recovery of concrete dust and related hazardous materials.

**Unbeatable Quality and Productivity:**

Ermator's approach to quality control is unmatched in the air cleaning and dust extraction



industries. Every single HEPA filter is individually tested and certified at filtration rate 99.99% at 0.3 microns. These HEPA Extractors also feature a unique Jet Pulse cleaning system which efficiently purges the pre-filter to maintain air flow, but doesn't open the vacuum and creating a dust hazard.

Along with the Jet Pulse filtration system, Ermator® innovations also include the Longopac dust-free bag changing system, automatic on/off trigger with unique power outlet, and built-in HEPA filter alarms. The HEPA filters are easily changed out and can be done quickly on the jobsite, with little to no effort or wasted time.

**Niagara Employees are qualified to answer all Ermator-related questions:**

Together, Niagara Machine and Pullman Ermator® form a partnership that is hard to beat. Niagara has been an Ermator® master distributor for 10 years. All Niagara employees have been certified and factory trained by Ermator® and have all the necessary knowledge needed to maintain the products. Niagara employees know which vacuum to pair with each machine. Our team's priority is to minimize the chance of health hazards and maximize productivity by providing high-quality, easy to use products and a well-trained, knowledgeable staff.

# dust is not just dust!

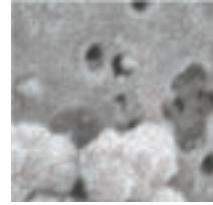
Construction dust can cause cancer, reduced lung capacity, heart disease, allergies and silicosis.  
Dust should be trapped in Ermator® HEPA filters, Not Your Lungs!



Construction dust is a unique mix of Cement, Concrete, Plaster, Wood, Quartz and more



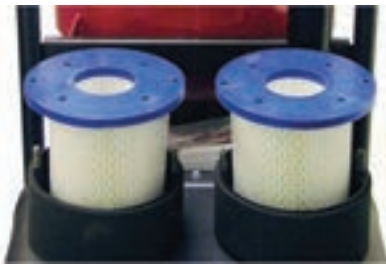
It may include asbestos, mineral fibers, soot, crystal fibers, granite and mold.



The smallest particles are the biggest threat! These tiny pieces can penetrate into your lungs and stay there.

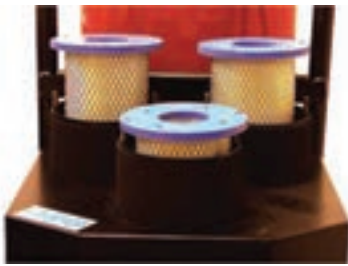
## what makes Ermator hepa extractors safe and efficient

All Ermator® HEPA extractors include three design features that promote safety while increasing productivity.



### TESTED AND CERTIFIED HEPA FILTERS

Ermator's approach to quality control is unmatched in the air cleaning and dust extraction industries. Every single HEPA filter is individually tested and certified at filtration rate 99.99% at 0.3 microns. These HEPA Extractors also feature a unique Jet Pulse cleaning system which efficiently purges the pre-filter to maintain air flow, but doesn't open the vacuum and creating a dust hazard.



### JET PULSE

Unique filter cleaning system efficiently purges the pre-filter to maintain airflow, without opening the vacuum and creating a dust hazard.

A HEPA Extractor system to fit any grinder, electric saw, jackhammer, or drill:

#### Improves surface preparation, concrete floor grinding and polishing:

- Maximizes grinder performance
- Increased surface visibility during grinding or polishing
- Increased life of diamonds and other abrasives
- Less dust contamination between cuts

#### Saves time and money:

- Fast, high volume recover of dust without clogging and interruption
- Less handling and hauling of concrete dust
- Easy and efficient filter cleaning

#### Compatibility:

- Works with all diamond surface grinders
- Works with other floor machine sanders and scarifiers
- Works with hand power saws, grinders, and drills



Continuous plastic tube is pulled downward and divided in single bags of any size.



Secure the plastic tube twice with wire ties.



Cut between the ties and dispose of the filled bag.



### JOB SITE SAFETY

Ermator® extractor systems are compatible with all diamond surface grinders, floor sanders and scarifiers, power saws, and drills. Ermator® equipment maximizes grinder performance, increases surface visibility and diamond life, reduces dust contamination between cuts, ensures high volume recovery without clogging or interruption, and minimizes dust handling.

**S-13 SINGLE-PHASE HEPA DUST EXTRACTOR**

The model S13 120V single motor HEPA Dust Extractor can be connected to electrical, hand-operated power tools to extract freshly cut, friable concrete dust. Also an effective all-around construction vacuum for picking-up a wide range of building materials and debris.

Model	CFM	Waterlift	HP	Amps	Weight	Volts
200900058A	129	100	1.7	9.8	66 lb.	120
200900058	129	100	1.7	4.9	66 lb	230



14" Rubber Blade Set 1340001	Floor Tool (1.5" x 14.5") 1326054	3-Piece Wand (1.5") 6324034	1.5" Hose to Wand Connector 1335016	1.5" Hose to Vac Connector 200900282	5" Dust Shroud Kit 201300447	7" Dust Shroud Kit 201200010
Conical Pre Filter 2010000016	HEPA Filter 200700070A	4 Gal. PlaSTI@ Bag 25 Pk 1276008	Longopac, 4 Pk 1376013	1.5" Hose Assembly 13.5" Long 200900281	5" Dust Hood 201400311	



S-26

**S-26 SINGLE-PHASE HEPA DUST EXTRACTOR**

A HEPA Dust Extractor not only exhausts perfectly clean air, it is far more efficient for the fast recovery of bulk dry dust, debris and other building materials found on every Construction, Abatement and Restoration jobsite.

Model	CFM	Waterlift	HP	Amps	Weight	Volts
200900059A	258	100	3.4	18	103 lb.	120
200900059B	258	100	3.4	9	103 lb	230

14" Rubber Blade Set 1340004	Floor Tool 2"x18" 1326087	2-Piece Wand 2" 1224035	5" Dust Shroud Kit 201300447	7" Dust Shroud Kit 201200010	Deluxe 7" Dust Shroud 201400584	5" Dust Hood 201400311	7" Dust Hood 201400312
Conical Pre Filter 20900050	HEPA Filter 200700070A	Longopac, 4 Pk 1376013	Adapter Complete 200900284	2" Hose to Wand Connector 201100125	2" Hose Assembly 25' Long 201000061	Twin Hose Kit 201000034A	Mini Vac Trailer 201400599

**VAC TRAILERS FOR PRESEPARATORS**

Pullman Ermator's Vac Trailers save time, and labor. One person can move both a vacuum and a preseparator simultaneously. With its unique design the preseparator hitches inline with the vacuum so the whole unit can be easily moved through a standard door.



Lay vac trailer on floor with small end facing vacuum. Undo velcro straps.



Lift back end and move vac trailer into position to hook on front of vacuum.



### S-36 SINGLE-PHASE DUST EXTRACTOR

Introducing the most powerful single-phase HEPA Dust Extractor on the market today. Three large, commercial-grade vacuum motors provide over 350CFM and 110-inches of waterlift, plenty of power to handle any mid-size planetary floor grinder.

Model	CFM	Waterlift	HP	Amps	Weight	Volts
200900057E	285	80	5.1	18	134 lb.	110
200900057A	353	100	5.1	14.8	134 lb	230

#### S-36

 Rubber Blade Set 1340004	 Floor Tool 2"x18" 1326087	 2-Piece Wand 2" 1224035	 Hose End 201100125	 Adaptor 2.5"-2" 201000173	 Adaptor Complete 200900284	 Adaptor 2.5" Complete 200900285	 Connector Straight 201000590	 2.5' Hose Assembly 33' 201000128
 Conical Pre Filter 200900051	 HEPA Filter 200700070A	 Longopac, 4 Pk 1376013	 2" Hose Assembly 25' Long 201000061	 5" Dust Shroud Kit 201300447	 7" Dust Shroud Kit 201200010	 Twin Hose Kit 201000034A	 Medium Vac Trailer 201400598	 7" Dust Hood 201400312

### T-7500 Three Phase HEPA Dust Extractor

The T-7500 is a three-phase dust collector driven by a quiet, powerful turbine motor that delivers 353 CFM airflow. This model features two HEPA filters, sock-style pre-filters that can be cleaned outside of the tank, and a 70-foot long Longopac dust-free disposal system. This model is easily transported for jobsites and is compatible with an array of floor grinders.

Model	CFM	Waterlift	HP	Amps	Weight	Volts
200600404A	353	110	10.4	24.2	548 lb.	230
200600404M	353	110	10.4	24.2	548 lb	230



#### T7500

 14" Rubber Blade Set 1340004	 Floor Tool 2"x18" 1326087	 2-Piece Wand 2" 1224035	 3" Aluminum Female Camlock 200800367	 Hose Connector 201100125	 Power Plug 100 Amp 200900024	 Grinder Plug 100 Amp 200900025
 Female Camlock Adaptor 3"-2" 201000029	 HEPA Filter 200600595A	 3" X 33' Hose Assembly 2009000054	 Filter Sock Assembly 200600596	 Longopac, 4 Pk 1376013	 2" Hose Assembly 25' Long 1225083	 Large Vac Trailer 201400597



Lay unit down and leverage top. The bottom will hold in place.



Place large wheels completely into slots.



Tighten Velcro straps. Unit is installed and ready to go!

**T-8600 Three Phase HEPA Dust Extractor**



**T-8600**

The T-8600 is powered by a turbine motor and features two tested and certified oversized HEPA filters. This model has sock-style pre-filters that provide nonstop grinding and long service lives that can be cleaned outside the tank via Jet Pulse negative air pressure. The T-8600 is equipped with an innovative, 70-foot long, Longopac dust-free disposal system, and comes with a 33' x 3" hose and complete floor tool kit.

Model	CFM	Waterlift	HP	Amps	Weight	Volts
200600404B	353	110	10.4	11.9	439 lb.	480

14" Rubber Blade Set 1340004	Floor Tool 2"x18" 1326087	2-Piece Wand 2" 1224035	3" Aluminum Female Camlock 200800367	Hose Connector 201100125	Power Plug 50 Amp 200900028	Grinder Plug 50 Amp 200900029
Female Camlock Adaptor 3"-2" 201000029	HEPA Filter 200600595A	3" X 33' Hose Assembly 2009000054	Filter Sock Assembly 200600596	Longopac, 4 Pk 1376013	2" Hose Assembly 25' Long 1225083	Large Vac Trailer 201400597

**T-8600 Propane HEPA Dust Extractor**



**T-8600 P**

With an 18 HP direct-driven turbine motor, this is the most powerful propane vacuum available. It has a capacity of 410 CFM, and a 115" water lift. The T-8600 is compatible with a variety of propane grinders.

Model	CFM	Waterlift	HP	Weight
200600404L	410	115	18	530 lb.

14" Rubber Blade Set 1340004	Floor Tool 2"x18" 1326087	2-Piece Wand 2" 1224035	3" Aluminum Female Camlock 200800367	Hose Connector 201100125	2" Hose Assembly 25' Long 1225083
Female Camlock Adaptor 3"-2" 201000029	HEPA Filter 200600595A	3" X 33' Hose Assembly 2009000054	Filter Sock Assembly 200600595	Longopac, 4 Pk 1376013	Large Vac Trailer 201400597

**S-26 & C-1300 VAC TRAILER**



VAC	S-26
PRESEPARATOR	C1300
WEIGHT	19 LBS
DIMENSIONS	33" X 26" X 9"
PRODUCT CODE	201400599

**S-36 & T-4000 VAC TRAILER**



VAC	S-36 T-4000
PRESEPARATOR	C3000
WEIGHT	22 LBS
DIMENSIONS	33" X 26" X 9"
PRODUCT CODE	201400598



### T-15000 Three Phase HEPA Dust Extractor



T15000

This is the most powerful 230V HEPA dust extractor on the market today. It features a pre-filter that acts as a built-in separator providing cyclonic operation for extended service periods. The T-15000 generates enough airflow to handle a single 4-head grinder or two 3-head grinders, and is one of few extractors that can be paired with a large shaver. It features four HEPA filters, Jet Pulse pre-filter cleaning, a Y-connector for one or two 3" hoses, 70' Longopac dust-free disposal system, and a venting port to direct exhaust away from the worksite. It comes with a 3" 33-foot hose, and single 4" to double 3" Y-connector. When used with two 3-head grinders (up to 32" wide), a pre-separator should be connected between each grinder and the extractor.

Model	CFM	Waterlift	HP	Amps	Weight	Volts
201300403	647	140	16	42	950 lb.	230

						
Silencer Drum 201300801	HEPA Filter 200600595A	3" X 33' Hose Assembly 200900054	Pre-Filter Sock Assembly 200700231	Longopac, 4 Pk 1376013	Y Pipe 4"-3"-3" 201000022	Large Vac Trailer 201400597

### T-18000 Three Phase HEPA Dust Extractor



T18000

The T-18000 produces sufficient airflow to handle one 4-head grinder, or two 3-head grinders. It can be also be paired with a large shaver. Four HEPA filters ensure clean air exhaust, and the intake port connects to a Y-connector to accept one or two 3" hoses. Features include a venting port directing exhaust away from the worksite, a 70' Longopac dust-free disposal system, and Jet Pulse pre-filter cleaning. It comes with a 3" 33-foot hose and a 4" to two 3" Y-connector. When used with two 3-head grinders (up to 32" wide), a pre-separator should be connected between each grinder and the extractor.

Model	CFM	Waterlift	HP	Amps	Weight	Volts
200700508B	710	140	18	28	905 lb.	480

						
Silencer Drum 201300801	HEPA Filter 200600595A	3" X 33' Hose Assembly 200900054	Pre-Filter Sock Assembly 200700231	Longopac, 4 Pk 1376013	Power Plug 60 Amp Female 200900033	Power Plug 60 Amp Male 200900034

### T-7500 & T-8600 VAC TRAILER



VAC	T-7500 T-8600
PRESEPARATOR	C5500
WEIGHT	35 LBS
DIMENSIONS	32" X 28" X 10"
PRODUCT CODE	201400597

### T-10000 VAC TRAILER



VAC	T-10000
PRESEPARATOR	C5500
WEIGHT	40 LBS
DIMENSIONS	34" X 28" X 9"
PRODUCT CODE	201300490

**C3000**



Designed for use with the S-26, S-36 And T-4000

**C-3000 PRE-SEPARATOR**

This model is designed with a 35 liter (9.24 gallon) pre-separator with a built-in vacuum that captures 90% of dust before it reaches the extractor filters. The results are improved efficiency, improved filter performance and to prolong grinding operations with minimal interruptions for filter maintenance. The C-3000 is also equipped with the Longopac dust-free disposal system.

Model	Weight	Volume	Collection	Size
200500159A	49 lb	9.77(gal)	Longopac	25" x 22" x 58"



Hose Kit 2" x 8'  
200700040

Hose End  
201100125

Longopac, 4 Pk  
1376013



**C5500**

**C-5500 PRE-SEPARATOR**

The pre-separator on this model removes 95% of the dust volume produced during extended grinding operations before it reaches the extractor filters. The C-5500 is the largest pre-separator manufactured by Ermator®. It features a 3" inlet and the Longopac dust-free disposal system for safe, efficient containment and handling.

Model	Weight	Volume	Collection	Size
200600451	130 lb	26.41(gal)	Longopac	21" x 28" x 58"



3" X 33'Hose  
Assembly  
200900054

Bar W/Wheels  
2 pieces  
201000063

Longopac, 4 Pk  
1376013

3" Aluminum Fe-  
male Camlock  
200800367

Designed for use with the T-7500, T-8600, T-8600P, T-10000, T-15000, and T-18000



**DRUM PRE-SEPARATOR ASSEMBLY**

**Drum Pre-Separator Assembly**

Pre-Separation Head for 55 gallon drum. Comes with 3" to 2" connectors so it can be used with both 3" and 2" hoses.

Model	Weight
201500203	38 lb

# ermator accessories



Weight: 41 LB  
Size: 15" X 17" X 17"

200900061A

## A-600 AIR SCRUBBER

The A-600 is a cabinet-style air scrubber offering airflow speeds of 350 and 600 CFM. Airflow is directed upward to eliminate dust accumulation on surfaces. An integral warning light indicates when the washable primary filter is 75% full and requires cleaning. This model has an electrical outlet that can daisy chain up to three units on one 15-amp circuit.



Weight: 80 LB  
Size: 16" X 28" X 32"

200900062A

## A-1200 AIR SCRUBBER

The A-1200 is a lightweight air scrubber featuring a narrow profile and two locking wheels for optimal maneuverability and stability. This model has a unique motor/impeller that operates at two speeds, and metal-framed HEPA filters with a steel mesh screen for maximum protection and easy cleaning. The primary filter is washable, and an integral light indicates when filters need to be cleaned or replaced.



Weight: 31 LB  
Size: 16" X 19" X 33"

200600756A

## C-1300 PRE-SEPARATOR

The C-1300 pre-separator captures 90% of material before it reaches the dust collector, keeping collector filters clean and extending the uptime of grinding operations by minimizing filter maintenance. This model has a capacity of 8.72 gallons and features a built-in vacuum equalizer for use with a plastic bag. It comes with an 8-foot, 2" hose assembly.



Weight: 41 LB  
Size: 15" X 17" X 17"

200800094A

## S-50 Wet/Dry HEPA Vacuum

The S-50 has an outlet for power tools. The vacuum will start and stop on demand from the power tool. The 7 second delay on the vacuum shut-off ensures that all dust is emptied from the hose. Variable speed on the vacuum motor allows the operator to adjust the amperage and suction power according to circuit breaker capacity. The S-50 has an automatic filter shaking system. A sensor indicates if a filter is clogged and starts shaking the filter immediately after the vacuum shuts off. The compact design makes it easy to transport, carry and to store in vans and trucks.



Weight: 41 LB  
Size: 15" X 17" X 17"

B160414 Dry  
B160487 Wet/Dry  
B100481 W/Foot Trigger

## 10 Gallon Recovery HEPA Vacuum

Equipped with a powerful 2 horsepower motor and an extra large capacity HEPA filter system, the model 45 offers the air flow efficiency of vacuums costing three times as much. Low noise allows for use in sound sensitive areas. The model 45 is manufactured to the same high standards as our larger HEPA vacuums, so it will withstand years of hard use. Available in wet/dry or dry only. Optional "Tool Trigger" feature allowing the operator to turn the vacuum on or off through the power tool.



A-600 air scrubber in use on a job site.



The Ermator A-600 works great with the S-26.

---

# blastpro



## *BlastPro® Industry Leading Shot Blasters, Floor Scrapers and Dust Collectors*

Niagara Machine Inc. offers the United States' leading designer and manufacturer of walk-behind and riding shot blasters, floor scrapers, and industrial dust collectors. Niagara Machine has become the number one distributor of BlastPro Manufacturing, this has been made possible by superior manufacturing. BlastPro's creative design innovations reduce both maintenance costs and downtime, while greatly increasing productivity.

Niagara Machine offers new and refurbished equipment and parts, as well as rental machines. Equipment and all parts are manufactured in the USA using the highest quality electronics, hydraulics, engines, motors and wear parts. BlastPro is continually adding new, innovative models to its comprehensive equipment line to ensure contractors the most efficient surface preparation process possible. Rentals are available by the day, week or month, and machines may be picked up at any of our locations, or delivered directly to your job site.

### *Unprecedented Customer Support.*

Niagara Machine has eleven sales and service locations. These factory trained representatives are able to assist in equipment selection, part ordering and application trouble shooting. In conjunction with BlastPro's 24/7 customer hotline, someone is always available to answer your questions.

### *Certified Training.*

Niagara Machine, offers hands-on surface preparation training at the Niagara Charlotte, NC facility. These are hands-on sessions taught by experienced staff and manufacturer's representatives in which customers learn to operate BlastPro, Lavina® and Ermator® equipment.

# scrapers



## BRB-1500

BlastPro's BRB-1500 is a battery-powered riding floor scraper featuring zero-turn radius for high efficiency. This unit has a low, adjustable operator seat for excellent work surface visibility. The BRB-1500 removes waterproofing membranes, tile, carpet, vinyl, hardwood flooring, thin-set adhesives, rubber, elastomeric coatings, sports flooring and pool deck coatings.

## BRB-2800

This propane-driven, riding floor scraper can accommodate the most difficult applications, removing a wide range of materials with greater speed and ease than any comparable machine on the market. Hydraulic steering and a zero-turn radius enable the highly maneuverable BRB-2800 to be used in difficult to access areas.

## BRB-3100EV

This battery-powered riding floor scraper can operate up to 10 hours with on a single charge. A convenient onboard charger can be plugged into any 110v outlet. The BRB-3100EV features a zero-turning radius, compact design to fit through doors, and an adjustable blade angle. It can be used to remove a wide range of materials including VCT, wood flooring, sheet vinyl and elastomeric coatings.

## BRB-4500

With an 8,000 square feet per hour capacity, BlastPro's BRB-4500 is one of the most effective and efficient floor scrapers available. This propane-driven riding machine features a highly comfortable seat to reduce operator fatigue, and hydraulic steering for precise maneuvering in tight areas. This unit is ideal for removing tile, carpet, vinyl, wood flooring, thin set, elastomeric coatings and pool deck coatings.



BRB-1500



BRB-3100EV



BRB-2800



BRB-4500

SRAPERS	BRB-1500	BRB-2800	BRB-3100EV	BRB-4500
BLADE WIDTH	6" - 18"	2" - 36"	2" - 36"	2" - 36"
TRAVEL SPEED	300 ft/min	485 ft/min	up to 250 ft/min	300 ft/min
VOLTAGE	48VDC	N/A	48VDC/48VAC	N/A
DIMENSIONS (LXWXH)	30.25"X31.75"X52"	74"X30"X68" w/tank	66.5"X30"X53.5"	93"X36"X72" w/tank
WEIGHT	1,500 lbs	2,800 lbs	3100 lbs	4,580 lbs
FUEL	BATTERY	PROPANE	BATTERY	PROPANE
EXHAUST SYSTEM	N/A	Catalytic Converter	N/A	Catalytic Converter
LIGHTS	N/A	Headlights/Flashers	Headlights	Headlights



BlastPro's equipment can remove some of the most difficult materials - tile, VCT, mastic, glues, carpet, wood. Propane or battery powered these scrapers are built tough to work tough.

# shot blasters

## BP-9-110V

This machine is an affordable, effective, walk-behind blast cleaner designed for small to medium size jobs, and that can also be used in conjunction with larger machines to shot blast edges and hard to reach areas. The BP-9-110V has a 4.5 HP motor, a 9" blast pattern, lightweight design and long cord for easy handling and maneuverability.

## BP-9-220V

BlastPro's BP-9-220V is a single-phase, walk-behind blast cleaning machine for small and medium size jobs, and may be used to complement larger machines. This portable, lightweight model is ideal for garage floors, balconies, basements and pool decks.

## BP-9-SP

The BP-9-SP is a self-propelled, 230-volt single-phase machine ideally suited for small and medium size jobs such as basements, decks, and hospital hallways, as well as edges and difficult to access areas on larger concrete floors. It has a travel speed of 2 to 80 feet per minute and an 8" blast pattern.

## BP-10

BlastPro's BP-10 is an electric, self-propelled unit featuring a 460V, 3-phase motor and a 10" blast pattern. This machine is ideal for medium to large jobs such as industrial plant and warehouse floors, parking garages, and bridge or ship decks. Coupled with a BP-5-54 Dust Collector, the BP-10 offers optimal productivity.

## BP-10 Super

This electric, self-propelled, walk-behind model operates on 208, 230 or 460V three-phase power. It travels up to 100 feet per minute, and has a production capacity of 300 to 1,550 square feet per hour. The BP-10 Super features high quality electrical components and an advanced air wash separation system.

## BP-15 Super

BlastPro's BP-15 Super is an electric, walk-behind, self-propelled machine with all of the superior features of the BP-10, but with a 15" blast pattern. It travels up to 100 feet per minute and has a production capacity up to 1,950 square feet per hour.

## BP-2-20

The BP-2-20 is designed for medium to large job including warehouse floors, parking garages, and bridge or ship decks. It is an electric, self-propelled machine with a 20" blast pattern. The BP-2-20 operates on 460V, 3 phase power. Use with the BP-9-54 dust collector for industry leading productivity.

BP-9-110V



BP-9-220V



BP-9-SP



BP-10



BP-10 SUPER



BP-15 SUPER



BP-2-20



	BLAST PATTERN	TRAVEL SPEED	BLAST MOTOR	VOLTAGE	DIMENSIONS L X W X H	WHEIGHT	DISTANCE TO EDGE
BP-9-110	9"	MANUAL	3.35 HP	110 V	42.5"X12.5"X39"	121 LB	1.5"
BP-9-220V	9"	MANUAL	3 HP	208, 230 V	47"X12"X39"	178 LB	1.5"
BP-9-SP	8"	2-80 FT/MIN	4 HP	230 V S-PH	36"X12"X48"	318 LB	1.5"
BP-10	10"	0-100 FT/MIN	10 HP	460 V 3-PD	63"X17"X40"	730 LB	1.5
BP-10 SUPER	10"	0-100 FT/MIN	15 HP	203/230/460 S-PH	63"X17"X40"	736 LB	1.5"
BP-15 SUPER	15"	0-100 FT/MIN	20 HP	208/230/460 V 3-PH	72"X23"X41"	847 LB	2.5"
BP-2-30 SUPER	30"	0-100 FT/MIN	2/20 HP	460 V 3-PH	75"X39"X48"	1,575 LB	2.5"
BP-10-27	10"	0-200 FT/MIN	27 HP	PROPANE	78"X34"X57"	1,525 LB	4"
BPZ-20-360	20"	40-240 FT/MIN	4 CYL	GAS OR PROPANE	108"X67"X67"	4,000 LB	6"
BP-2-20	20"	0-120 FT/MIN	2/15 HP	460V 3 PH	77"X28"X55"	1,270 LB	2.5"

**BP-2-30 SUPER**

Designed for medium to large size jobs, this model features a 30" blast area for optimal production. The drive system is an AC-inverted motor with integrated brake that enables the machine to maintain speed on inclines and declines for precise control. Dual-shot valve control handles enable the operator to independently control amperage on each blast wheel. Rear casters facilitate loading and transport.

**BP-10-27**

BlastPro's BP-10-27 is a propane-driven, riding shot blasting machine for applications such as runways, industrial floors, parking garages and bridge decks. Compact design enables the machine to pass through 36" doorways. This model features a rounded housing and innovative Hammer Head reversible, dovetail blade that is integrated into the paddle wheel for superior performance.

**BPZ-20-360**

This propane-driven, riding shot blaster has an innovative zero-turn radius, and a production capacity of 3,800 square feet per hour for incredibly efficient performance. The BP-20-360 is the model of choice for applications demanding high performance and versatility, particularly for preparing concrete for recoating and overlays. Superior quality components ensure inherent dependability.

**BP-505**

This shot blaster is designed for cleaning steel and features modular construction that permits it to be disassembled and fit through a 24" manhole. Independent wheel drives optimize its maneuverability. The BP-505 is an economical and environmentally friendly unit for cleaning and profiling horizontal steel surfaces, and facilitates the immediate application of coatings.

**BP-9-54**

BlastPro's BP-9-54 is an advanced dust collection system recommended for use with the BP-10 Super and BP-15-Super to ensure worker safety and a clean environment. It has a airflow of 1200 CFM and features reverse pulse filter cleaning that purges three filters every 13 seconds. A large dustbin ensures maximum uptime with fewer breaks for emptying. Two 2" vacuum inlets can accommodate grinders, edgers and related equipment.

**BP-5-54**

The BP-5-54 is a dust collector designed to work with the BP-10 shotblaster on medium to large size floors. A 460V, three-phase, 5 HP motor drives this collector, which features a proven design ensuring highly efficient and effective performance. BlastPro recommends the BP-5-54 for every surface preparation fleet.



**Common BlastPro Wear Parts-Same Day Shipping Available!**



*In addition to having in-stock wear parts for BlastPro Manufacturing's equipment, Niagara offers a full line of wear parts for competitive machines. Most parts are available for same, or next day shipment.*

BP-9-220V	
WHEEL KIT:	BT6917480
TOP LINER:	BT4973070
RIGHT LINER:	BT6908260
LEFT LINER:	BT6908250
FRONT BRUSH:	BT6908300
SIDE BRUSH:	BT6908301

BP-9-SP	
WHEEL KIT:	BT6917480
TOP LINER:	BT6986760
RIGHT LINER:	BT6986750
LEFT LINER:	BT6986740
FRONT BRUSH:	BT9697170-B
SIDE BRUSH:	BT6908301

BP-9-110V	
WHEEL KIT:	BTP002649
TOP LINER:	BT4973070
RIGHT LINER:	BT6908260
LEFT LINER:	BT6908250
FRONT BRUSH:	BT6908300
SIDE BRUSH:	BT6903010

BP-10 & BP-10-SUPER	
WHEEL KIT:	BT4977780
TOP LINER:	BT4899460
RIGHT LINER:	BT4899480
LEFT LINER:	BT4899470
MAGNET SEAL: Rubber	BT49900500
Urethane	BT6947210
SKID SEAL:	BT6826520_

BP-15-SUPER	
WHEEL KIT:	BT6774960
TOP LINER:	BT4990910
RIGHT LINER:	BT4899480
LEFT LINER:	BT4899470
MAGNET SEAL: Rubber	BT4991020
Urethane	BT6984390
SKID SEAL:	BT6826520_



# hand tools



A hand-held grinder is a very useful tool that can be used in many different applications. It's great for removing irregularities and smoothing out high spots on a concrete floor. Some of its other uses can include prepping concrete for coatings and remove old and worn paint and coatings. With the proper tooling they can also be used to polish concrete.

A hand-help polisher is typically a key tool when it comes to polishing edges on a polished floor job. Dealing with edges is by far one of the least desirable jobs of the polishing process, but by polishing the edges of a floor it give you a better result with floor seamlessly joining the wall. Speaking of walls, since some exterior wall edges may slope up or down, it's very important to have the ability to adjust the polisher to accommodate that.

Both hand-held grinders and polishers have the ability to reach tight places, get down to low spots and allow the operator to really see what they're doing to the floor.

## METABO GRINDER & POLISHER KITS



MET-05-65006C

**7" Surface Prep Kit**  
Includes a Metabo W24-230 Grinder, Dust Shroud and D-ring handle.



NIA-METABO-POLISH KIT

**Metabo Polisher Kit**  
Includes a Metabo PE12-175 Variable Speed Polisher, 5" Backer pad and dust shroud.



MET-05-65000C

**5" Surface Prep Kit**  
Includes a Metabo WE15-125 HD GED Grinder, and dust shroud.



NIA-5IN-METABO-GRINDDUST HOOD

**Tuck Point/Crack Chaser Kit** - Includes a 5" Metabo W9-125 Grinder, Dust hood

## DIAMAPRO SPEEDI EDGE



*Transform Your Standard Angle Grinder/Polisher Into An Effective Planer!*

The SpeediEdge is a simple and easy to use device that will transform your standard angle grinder or polisher into an effective planer! It is universal, is available in three sizes and is compatible with every grinder.



The SpeediEdge Max fits most 7" hand grinders



The SpeediEdge Standard fits Metabo polishers



The SpeediEdge Mini fits most 5" hand grinders

## METABO KITS WITH SPEEDI EDGE PACKAGE



MET-05-65000C-DPSEM X

7" Surface Prep Kit with a Diamapro Speedi Edge Max and a Dust Shroud



NIA-METABO POLISHER KIT-DPSESD

Metabo Polisher Kit with a Diamapro Speedi Edge Standard, 5" Velcro Backer Pad and Dust Shroud



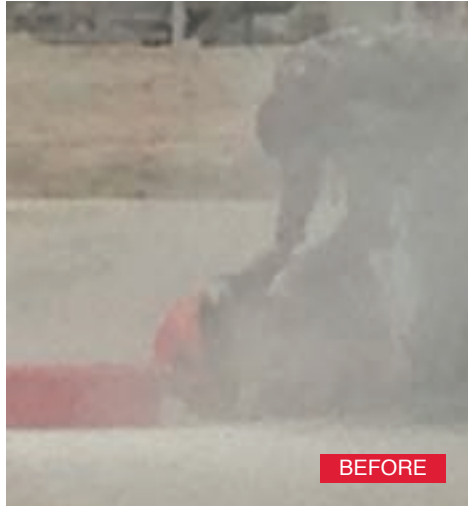
MET-05-65000C-DPSEM N

5" Surface Prep Kit with a Diamapro Speedi Edge Mini and Dust Shroud





# dust shrouds & hoods



**BEFORE**

Uncontrolled construction dust.



**AFTER**

Dust hood captures harmful construction dust.

## ERMATOR DUST HOODS AND SHROUDS The Key To Dust Control

Ermator's Dust Hoods and Shrouds provide unmatched protection when it comes to Silica dust control. OSHA requires that an employer reduce or eliminate crystalline silica dust. The Ermator Shrouds and Hoods capture 98% of created dust when grinding, crack chasing, and tuck pointing, when used in conjunction with an Ermator Vac. These shrouds and hoods are universal and are compatible with most hand grinder models on the market. For Hand Grinding use a 5" or 7" Ermator Dust Shroud and for crack chasing/tuck pointing the Ermator 5" or 7" Dust Hood.

Installs in seconds! Easily slide the appropriate spacer ring onto the grinder, then slide the shroud onto the spacer. Set your height and tighten the clamp. You're ready to go!



Shroud used with an S-13 curbs dust.

### Deluxe 5" Shroud

Our dust shrouds fit most hand grinders. The attachment collar with multiple rings supplied with shroud allow the dust shrouds to be attached to every common hand grinder.



PE-201500381

### Deluxe 7" Shroud

PE-201400584



Flip-up section for tight spaces and wall work. Replaceable wear pads on bottom to extend life and keep suction



Swivel so hose doesn't kink. Vent hole for airflow adjustment.



Rubber center piece for flexibility. Heavy duty material for long life and durability.

### Universal Solid 5" Hand Grinder Shroud



PE-201300447

### Universal Convertible 7" Hand Grinder Shroud



PE-201200010

### Dust Hood 5 or 7 inch



4" PE-201400311

7"-9" PE-201400312

# cup wheels

We offer a wide variety of cup wheels such as: Metal Bond Diamond, Ceramic, Zec and PCD's. There are various styles and specifications of cup wheels. A Metal Bond cup wheel is used in different applications, for example grinding concrete, if you need a smoother finish, you'll use a cup wheel where the diamond segments are closer together, cup wheels with small or sparse diamond segments are normally used for fast removal of paints, wallpapers, glues, epoxy and other surface coatings. PCD cup wheels are a more aggressive style of removal cup wheel, you can choose between 1/2 round, for thicker coatings, to a chip style, for thinner coatings. For lighter removal and cost savings you could turn to a Zec Cup Wheel. Ceramic cup wheels are a newer technology and they are typically used in the earlier stages of the polishing process from a 30 grit up to 400 grit. Whatever your project may require, we have the Cup Wheel for you!

4.5" 9 SEG TURBO CUP WHEEL



Threaded  
CG-445-DT  
Non Threaded  
CG-445DT-5/8-11

4.5" 18 SEG TURBO CUP WHEEL



Threaded  
CG-455-DT  
Non Threaded  
CG-455DT-5/8-11

5" ARROW SEG CUP WHEEL



Threaded  
CG-5ASEG  
Non Threaded  
CG-5ASEG-5/8-11

5" CERAMIC SHINE CUP WHEEL



Threaded Only - Available in 30,  
50, 100, 200, 400 Grits  
DT-CW-5-CER-030-5/8-11  
DT-CW-5-CER-050-5/8-11  
DT-CW-5-CER-100-5/8-11  
DT-CW-5-CER-200-5/8-11  
DT-CW-5-CER-400-5/8-11

4.5" ABRASIVE GRINDING CUP WHEEL



Non Threaded Only  
05-10750

5" CHIP PCD CUP WHEEL



Threaded  
CG-SPCD-12  
Non Threaded  
CG-SPCD-12-5/8-11

5" 1/4 ROUND CUP WHEEL



Threaded  
CG-5PCD-8  
Non Threaded  
CG-5PCD-8-5/8-11

7" 12 SEG TURBO CUP WHEEL



Threaded  
CG-712-ETB  
Non Threaded  
CG-712-ETB-5/8-11

7" 24 SEG TURBO CUP WHEEL



Threaded  
CG-724-ETB  
Non Threaded  
CG-724-ETB-5/8-11

7" ARROW SEG CUP WHEEL



Threaded  
CG-7ASEG  
Non Threaded  
CG-7ASEG-5/8-11

7" T-SEG CUP WHEEL



Threaded  
CG-7TSEG  
Non Threaded  
CG-7TSEG-5/8-11

7" DOUBLE ROW CUP WHEEL



Threaded  
CG-735DT  
Non Threaded  
CG-735DT-5/8-11

**7" CONTINUOUS RIM TURBO CUP WHEEL**



Threaded Only  
CG-7CONTC-5/8-11-COURSE  
CG-7CONTM-5/8-11-MEDIUM  
CG-7CONTF-5/8-11-FINE

**7" CERAMIC SHINE CUP WHEEL**



Threaded Only - Available in 30, 50, 100, 200, 400 Grits  
DT-CW-7-CER-030-5/8-11  
DT-CW-7-CER-050-5/8-11  
DT-CW-7-CER-100-5/8-11  
DT-CW-7-CER-200-5/8-11  
DT-CW-7-CER-400-5/8-11

**7" ABRASIVE GRINDING CUP WHEEL**



Non Threaded Only  
05-10700

**7" CHIP PCD CUP WHEEL**



Non Threaded ONLY  
CG-7PCD-18

**7" 1/4 ROUND CUP WHEEL**



Threaded  
CG-7PCD-12  
Non Threaded  
CG-7PCD-12-5/8-11

# accessories

**QUICK CHANGE TOOL HOLDERS**



9" TOOL HOLDER X SERIES    9" TOOL HOLDER S SERIES    9" TOOL HOLDER PRO SERIES

QuickChange tooling is mounted directly to the heads/tool holders of the new X and S series machines (no additional QC plates are needed), whereas the older Pro and SPS series STI® require additional QC metal plates. All models require foam plates for attaching Velcro backed tooling, and the foam plates for PRO and SPS machines are not compatible with X and S series machines.

**X SERIES** Available in 7", 9", 13.2"  
**S SERIES** Available in 7", 8", 9", 13.5"  
**PRO SERIES** Available in 7"



**9" QC METAL PLATE**  
Offered in 7" and 13.5"



**FOAM PLATES**  
Used to attach Velcro backed tooling (X, S, Pro and SPS models. 7", 8", 9", 13.2"



**QC TOOL HOLDER ADAPTER**  
Used for non-Lavina® machines.



**QC SEESAW PLATE**  
Used for coating removal with S, Pro and SPS models



**WEIGHTS**  
Additional weights from 17.5, 48, and 64 lbs.



**ALUMINUM LIPPAGE HOLDER**  
Used to attach Velcro backed tooling also available in QuickChange design.

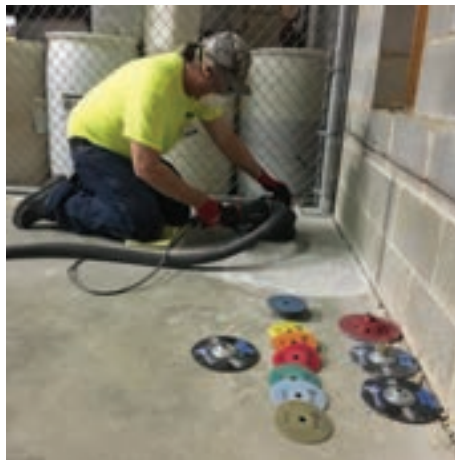


**RUBBER SPACER WITH HOOK AND LOOP**  
Used as a cushion between the diamond pad and backer. Available in 3", 4", 5", 7", 8", 9"

**PLATES & ADAPTERS FOR OTHER MACHINES**



You can easily use our QuickChange tooling with almost any other grinder on the market. We offer plates or adapters for HTC®, Husqvarna®, STI®, Terroco®, etc. Please call for more information regarding compatibility with your grinder.



# burnishers

## Lavina® LB36G-S



The planetary LB36G-S burnisher made by Superabrasive is possibly the most efficient and versatile burnisher on the market. With a large 36-inch foot print and forced planetary drive, you will get your job done much faster and deliver a better floor finish.

- 36-inch work path with three 14 inch heads and heavy duty body (617 lbs)
- Low profile base for buffing and polishing under racks and shelving;
- Kawasaki Engine FS481 V with Low Oil Shut Down and Safety Regulator Fuel System;
- Use wet or dry;
- Efficient water delivery system with pump and front spray
- Superior dust collection system;
- Smooth control and easy operation;
- Use with 14-inch Shine Pro diamond screens and Shine Pro diamondpads

## E-FORCE

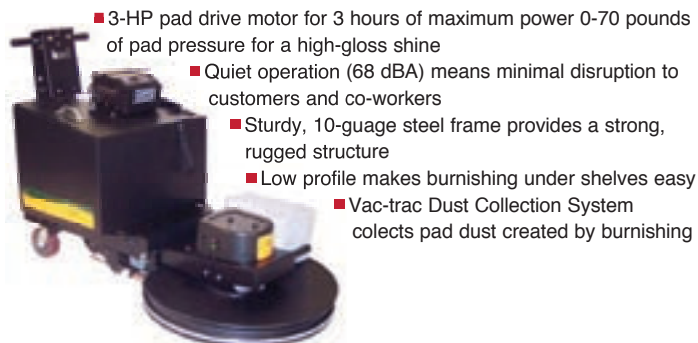
The eForce® Burnisher features the best burnishing technology in the industry combined with the superior productivity of a riding platform.

- Joystick control makes the eForce Burnisher simple to control and less fatiguing to drive.
- Excellent visibility of the work area.
- Zero turn radius
- Front mounted burnishing pad allows the eForce to get into corners
- Hinged 90° flip-up burnishing head allows for compact storage and standing pad changes.
- There are three pad pressure and drive speed settings to fine tune your burnishing process.
- A "supervisor mode" allows you to select which drive speeds and pad pressures your operators can use.
- Six 6-volt 430 AH batteries provide up to 3 hours of constant run time



## Charger 2717 AB

A wide, productive walk-behind battery burnisher, Charger 2717 AB produces a wet-look shine previously attainable only with a propane burnisher.



- 3-HP pad drive motor for 3 hours of maximum power 0-70 pounds of pad pressure for a high-gloss shine
- Quiet operation (68 dBA) means minimal disruption to customers and co-workers
- Sturdy, 10-gauge steel frame provides a strong, rugged structure
- Low profile makes burnishing under shelves easy
- Vac-trac Dust Collection System collects pad dust created by burnishing

## DIAMAPRO DEMON

The DiamaPro Demon is a single speed machine that performs Xtra Heavy-Duty scrubbing, stripping and surface preparation on all hard floors. Utilizing a floating head design which insures 100% pad contact at all times. Being able to disconnect the handle from the running unit allows for easy storage.



- Handle and carriage is easily removable for transport and storage
- Low current draw
- UL/CUL approved for safe performance
- Thumb operated safety switch
- Negative pressure on/off switch
- Dual steel operating triggers for left or right hand operation
- One-piece, heavy duty industrial
- Powder coated, steel handle for optimum durability
- Welded frame for rugged, reliable performance
- 2" x 8" non-marking ball bearing wheels
- Variable position positive lock handle for operator comfort and safety
- Comfort style vinyl handle grips
- 360 degree wraparound and under snug fit bumper no tools needed for replacement
- Comes standard with a dust control shroud
- Multiple purpose machine that can be used for: scrubbing, stripping, grinding, and screening
- Can be utilized with a variety of pad driver attachments



*Easy to disassemble for storage or transportation*

## DIAMAPRO DP-BUR27

The DiamaPro 27" Propane Burnisher Is perfect for hard to reach areas. Comes Standard with dust control that removes up to 92% of air particulates.



- Ultra low profile 3 3/4" for burnishing hard to reach areas
- Rugged, patented solid steel body
  - 18HP Kawasaki engine with low oil shut down and safety regulator fuel system
  - Premium catalytic muffler for ultra low carb and EPA emissions
  - 12 volt battery key start
- Adjustable comfort handle with click-N-Lock throttle cable
- Advanced polymer composite pad driver
- Adjustable back wheels for controlled pad pressure
- 1.5" vacuum hose adaptor easily connects to external vacuum
- Airtight floating dust skirt
- Dust control feature removes 92% of air particulates of 1 micron or larger

# scarifiers



**FS200**  
*Electric*

The FS200™ combination scarifier/grinder with feathering wheel is perfect for users looking for a simple all-in-one lightweight, portable solution to remove coatings, surface prep and lightly scarify any floor surface with a variety of optional cutter drums to produce SP3 - SP9 surface profiles. Specify your power requirements from 2HP 110V, 3HP 220V, electric motors and 5HP and 9 HP Gas powered engines, Get close to walls with edger attachments.

- Height adjustable vibration tension setting with comfort grips
- All steel construction with industrial powder coat
- Dust free vacuum port
- Triple drive belts with safety belt guard
- Fixed front wheel for straight line removal
- Maintenance free drive bearings
- Removable side plate for cutter access Hex drive shaft for easy side drum loading



**SPS8**  
*Electric, Gas or Propane Models*

The SMITH SPS8™ is the no-frills economy model built on the SMITH SPS10™ chassis, it is best suited for simple scarification applications with available cutter drum options and powered in electric or gas motor options.

- Get close to walls with up to 4" width cut edger assembly
- Standard 4 outboard wheels for consistent finish
- No-bounce center weight design for consistent finishes. Deluxe models are two times faster with larger cutters, shafts, wheels, bearings and cradle.



**FS351**  
*Electric, Gas, or Propane Models*

One machine Shaves, Profiles or Scarifies floor surfaces up to 15" wide per pass. Only the SMITH brand FS351™ is a self-propel Surfacers with the flexibility and power to to prepare your floor surfaces with controlled surface finishes from CSP3 - CSP 10 properly with the selected optional cutter drums to strip, level, prep, groove, cut, abrade, remove and more up to 15" wide, dust-free.

- All steel chassis
- Lockable cut depth controls to remove in the impact zone
- 2 times faster adaptable for shaving, rotoplaning or scarifying
- Vacuum pickup maximizes containment
- Lowest vibration and longer bearing life
- Rapid lifting carriage integrated depth controls
- Fewer moving parts increases uptime
- Direct hydrostatic "no-fault" drive with variable F/R speed
- Quick change diamond or cutter drum assemblies

*Optional:*

- Center depth controls for precision multi pass removal
- PLC controls for accurate depth and feed rates
- Diamond shave up to 2" cut depth



**SPS10**  
*Electric*

Compact, rugged, center-drum-balanced all-in-one walk-behind surface preparator to shave, profile or scarify floor surfaces up to 10" wide per pass. The SMITH SPS10™ is the world's most reliable gas or electric powered surface preparator on the market.

- Height adjustable multi positional ergonomic comfort grip handlebar
- All steel unitized heavy-duty construction, reinforced at stress points with industrial powder coat
- Dual 2" OD Vacuum dust-collection ports
- Reversible handle controls
- Two stage cyclone air cleaner
- Operator dashboard for speed controls, safety shutoff, disengage cam with deluxe 10 setting exclusive micro depth knob
- Forward, reverse and side to side operation with & without optional Sulky driver & hitch connection
- Removable side plate for side-loading drum with twin maintenance free drive bearings and brush and ship guard

# sweep/scrub

## CHAMP SERIES

The Champ series scrubbers from NSS® are the ride-ons with big ride-on power. Their 36V electrical system package delivers up to 30 percent more run time than a comparably configured 24V machine, so the Champs give you more of what you expect from a ride-on autoscrubber.

**Maneuverability:** the single front-drive wheel turns 90 degrees in both directions—unlike most of its competitors—so it needs only 67-70 inches in which to turn around.

**Power:** with its 1 HP drive motor and powerful 36V power system, the Champ 2929 has guts enough to power up most loading ramps.

**More Wet Vacuuming Power:** 60-in of water lift on the 2929 and 3329, and 80-in on the 3529—substantially more wet vacuuming power than most other machines in their class.

**On-Board Battery Charging:** allows instantaneous charging of the batteries wherever there's an electric outlet—no more hauling out separate battery chargers. 2929 model available with 225 AH or 325 AH batteries. The 3529 and 3329 models feature the heavy-duty 325 AH batteries.

Available in 29, 33, and 35-in widths.



CHAMP 2929

The new Champ 2929 automatic scrubber from NSS® is the snappy little ride-on with big ride-on power. Its 36V electrical system delivers up to 30% more run time than a comparably configured 24V automatic scrubber.

*Fits through a 36-inch door with skirts and squeegee intact.*

- 29-in/74-cm scrub path with 33-in/84-cm curved blade squeegee
- 29-gal/110-l solution tank and oversized 32-gal/121-l recovery tank
- 1-HP drive motor with 3 forward speeds
- 2-HP brush motor, 300 RPM brush speed
- Six 6V, 235 AH or 350 AH batteries (maintenance free AGM battery option available)



CHAMP 3329

The little ride-on automatic scrubber with 'oomph' just got bigger. For those who love the performance characteristics of the Champ 2929 but need to clean larger floors, the Champ 3329 and Champ 3529 are the perfect ride-on scrubbers.

- 33-in/84-cm (Champ 3329) or 35-in/89-cm (Champ 3529) scrub path with 46-in/117-cm curved Linatex blade squeegee
- 29-gal/110-l solution tank and oversized 32-gal/121-l recovery tank
- 1-HP drive motor with three forward speeds
- 2.5-HP brush motor, adjustable 220-300 RPM brush speed
- Six 6V, 350 AH batteries

*Options include lights and bumper kit*



## sweeper

MANTA RS 34

The Manta RS 34 is the ideal machine for large-area sweeping, yet is maneuverable enough for confined-area maintenance — it will fit through 36-inch doorways without removing brushes.

- 34-inch/86.2-cm sweeping path
- Large 13.2-gal./50-l hopper that rolls for easy emptying
- Active vacuuming system that works equally well on carpeted areas and hard floors, indoors or out
- Foot pedal opens flap in front of main brush to pick up large debris
- Four 6V, 235 AH batteries provide up to 3 hours of run time
- On-board battery charger simplifies recharging

**WRANGLER 1503**



Ergonomic design, simple operation and a compact body make the Wrangler 1503 the best value in micro scrubbers. Designed for applications less than 10,000 sq. ft., this Wrangler is perfectly sized for restrooms, convenience stores, and small rooms.

- 15-in/38.5-cm scrub path; 18-in/45-cm squeegee
- 3.7-gal/14-l solution and 4.2-gal/16-l recovery tank
- .33 HP brush motor and .4 HP vacuum motor
- Wrap-around squeegee is located directly behind the scrub brush for complete solution recovery
- Adjustable ergonomic handles and two 8 inch rear wheels increase maneuverability
- AGM battery-powered (AB) and cord electric (AE) models available

**WRANGLER 2010**



Ergonomic design, simple operation and a compact body make the Wrangler 2010 the best value in small scrubbers. Designed for applications from 10,000 to 30,000 sq. ft.

- 20-inch/51-cm scrub path
- 10-gal/38-l solution and 12-gal/45.5-l recovery tank
- .75 HP brush motor and a .5 HP vacuum motor
- 32-inch straight squeegee breaks away to prevent damage upon contact with fixed obstacles
- Ergonomic handles, two 8-inch rear wheels, and swivel front casters for maneuverability
- Battery-powered (AB) and cord-electric (AE) models available

**WRANGLER 2016**



20-inch automatic scrubber with a tight turning radius and scrub head lock-down feature allow the mid-sized Wrangler 2016 to tackle heavy scrub and standard scrub jobs with ease. Its 20-inch scrubbing path makes quick work of any task. A rugged, rotocast-polyethylene body and 7-gauge steel frame deliver long term durability.

- 20-inch/51-cm scrub path; straight or curved squeegee
- 16-gal/61-l solution and 17-gal/64-l recovery tank
- .75 HP brush motor and a .75 HP vacuum motor (DB/AB)
- Offset scrub head for superior edge cleaning
- Battery-powered wheel drive (DB) or pad drive (AB) and cord-electric pad drive (AE) models available

**WRANGLER 2625**



The Wrangler 2625 DB is the mid-size value leader with large scrubber features in a compact, maneuverable package.

- 25-inch/64-cm scrub path, straight or curved squeegee
  - 25-gal/95-l solution tank; 27-gal/102-l recovery tank
  - Two .75 HP brush motors and a .75 HP vacuum motor
  - Four 6-V, 235 AH batteries
  - Variable speed propulsion and three scrub pressures
  - Compact body design for maneuverability
- Available Sidekick Chemical Metering System*

**WRANGLER 3330**



With the high performance Wrangler 3330 DB, cleaning large areas has never been easier. This rugged maneuverable automatic scrubber is unsurpassed for cleaning power, productivity, and dependability.

- 33-inch/84-cm scrub path
  - Straight urethane or curved gum-rubber squeegee
  - 30-gal/114-l solution tank and 33-gal/125-l recovery tank
  - Two 0.75 HP brush motors and a 0.75 HP vacuum motor
  - Six 6V batteries--choose 235 AH or 350 AH
  - Low-profile side skirt, bumpers, and power deck optional
- Available Sidekick Chemical Metering System*



**SIDEKICK - Chemical Metering System**

*Add a Sidekick Chemical Metering System to any Wrangler 2625, 2730, 3330 or Champ for accurate on-board chemical dilution.*

- Ten dilution ratios allow the use of a wide assortment of chemicals (20:1, 32:1, 50:1, 64:1, 100:1, 128:1, 150:1, 200:1, 256:1, 300:1)
- Chemicals and clean water are never mixed in the solution tank, eliminating wasted solution
- Dilution control settings are conveniently located at the operator position
- Sidekick works with any brand of chemical
- Bottle holder accepts any one-gallon F-style bottle

# your one stop surface prep shop



**NIAGARA**  
**MACHINE, INC.**  
www.niagaramachine.com  
**800-622-2048**

Four Service and Showroom Locations ■ Ten Sales Locations

325 West Front  
Erie, PA 16507  
814-455-8838  
814-454-0160 fax

1803 Associates Lane  
Charlotte, NC 28217  
704-329-5701  
704-329-5705 fax

500 South Broadway  
Gloucester City, NJ 08030  
856-742-4200  
856-742-7204 fax

4215 Bergen Turnpike  
North Bergen, NJ 07047  
201-758-5422  
201-758-5423 fax