



08 71 00 Door Hardware

EVOLUTIONS



HARDWARE FOR ANY APPLICATION

VOLUME 11



ABOUT PDQ Family owned and managed for over 33 years, PDQ has maintained its commitment to remain independent as a market leader, introducing cutting edge, innovative products and setting the standard for service, quality and value. Based in central Pennsylvania, PDQ serves its customers with a world class offering of in-house engineered and manufactured commercial grade mortise locks, cylindrical locks, door closers, exit devices, flat goods, stand-alone electronic locks and electronic access control devices. “We’re one of the few remaining door hardware manufacturers still family owned that offers that personal touch and independence that the larger, multi-national corporate conglomerates have difficulty matching. And that family spirit is what were able to relate to when serving our many, still family owned distributors,” says Bill Tell, Founder, President and CEO of PDQ Manufacturing. Built to exceed industry standards, PDQ’s products offer an exceptional value, quality, visual appeal and long service life, backed by the best warranty in the industry. Typical delivery is 1-3 days, with distribution centers in Kansas City, MO, Auburn, WA, and Salt Lake City, UT.

TIMELINE OF GROWTH AND INNOVATIONS

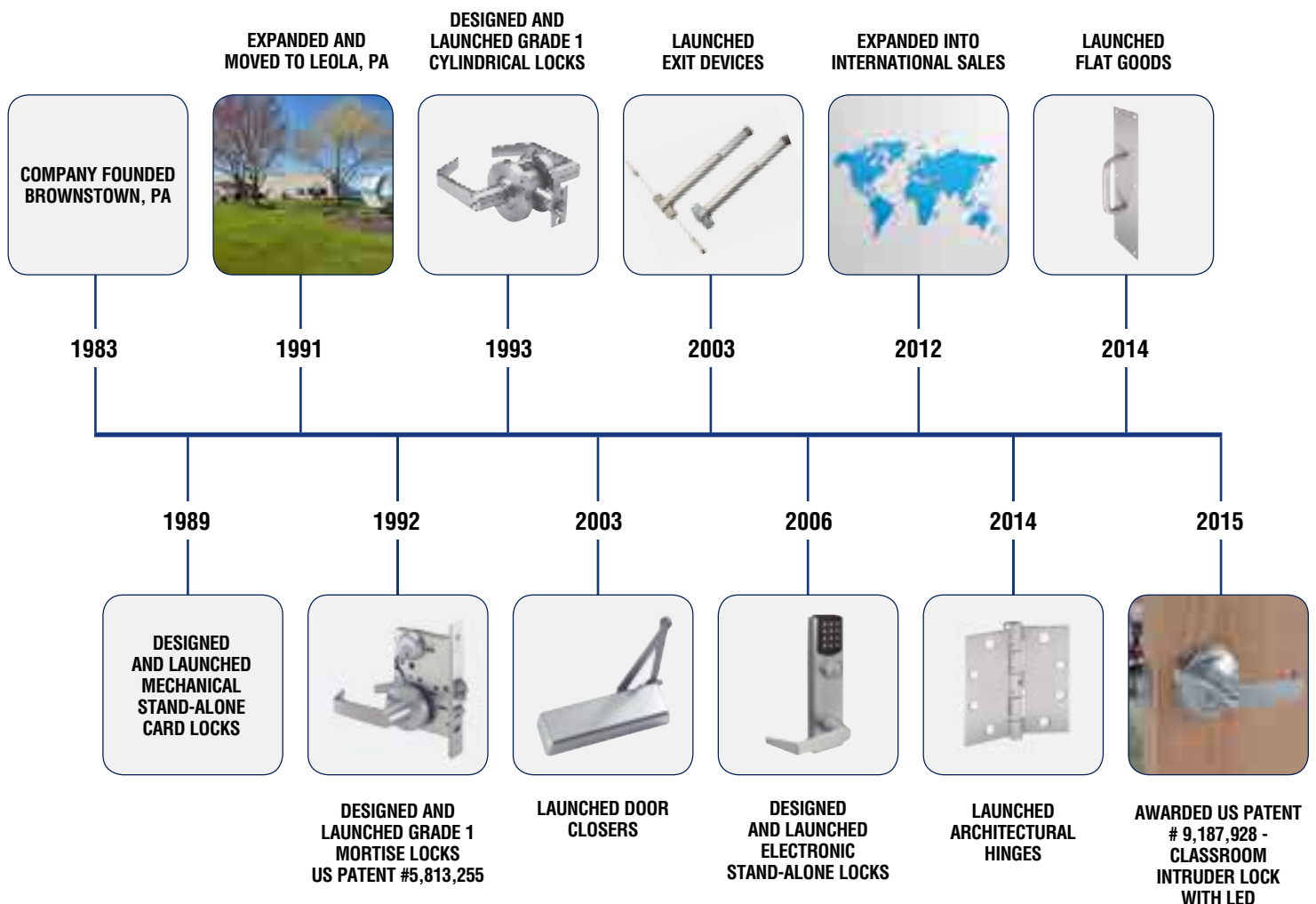


TABLE OF CONTENTS

HISTORY OF PDQ	2-5
COMPETENCY STATEMENT	6-7
MORTISE LOCKS	8-10
MORTISE DEADBOLTS	11
TUBULAR LOCKS	12
CYLINDRICAL LOCKS, GRADE 1	13-17
SCHOOL SECURITY SOLUTIONS	16
CYLINDRICAL LOCKS, GRADE 2	18-19
INTERCONNECTED LOCKS	20
DEADBOLTS	21
CYLINDERS, KEY SYSTEMS	22-23
DOOR CONTROLS	24-27
EXIT DEVICES, ARCHITECTURAL WIDE STILE	28-35
EXIT DEVICES, ARCHITECTURAL NARROW STILE	36-40
MULLIONS	41
EXIT DEVICES, COMMERCIAL WIDE STILE	42-45
ARCHITECTURAL HINGES	46
FLAT GOODS	47
ELECTRONIC ACCESS CONTROL	48-49
WARRANTY	50
FINISHES	51

PAST PERFORMANCE LOCATIONS



**Courtyard
Oneonta, NY**



**Fairfield Inn and Suites
Bedford, PA**



**Residence Inn
Harrisburg, PA**



**Homewood Suites
Allentown, PA**



**Johns Hopkins University
Baltimore, MD**



**Westin
Buffalo, NY**



**Osan Air Force Base
Officers Quarters, South Korea**



**NATO Headquarters
Norfolk, Virginia**



**Lake County Veterans Administration
Baldwin, Michigan**

PDQ'S MANUFACTURING FACILITIES IN LEOLA, PA USA



PDQ'S MANUFACTURING FACILITIES IN LEOLA, PA USA



CAPABILITIES STATEMENT



CERTIFICATIONS/COMPLIANCES/LISTINGS/APPROVALS

- Underwriters Laboratories (UL)
- Builders Hardware Manufacturers Association (BHMA)
- Certified Products Listings (CPD)
- Florida Building Commission, Hurricane Rated
- Windstorm Rated
- Americans with Disabilities Act(ADA)
- ICC/ANSI 117.1 for Accessible and Usable Buildings
- Unified Facilities Guide Specification 08 71 00 (August 2008)
- Buy American Act (BAA)
- Trade Agreements Act (TAA)
- LEED® Recycled Content 32% to 54%
- Contributes to LEED® Credits 2.1, 4.1 and 4.2 - Recycled Content from 32% to 54%
- Authorized AbilityOne Distributor - Co-brand SKILCRAFT partner (See back page for more information)



PAST PERFORMANCE LOCATIONS



Al Dara Hospital
Riyadh, Saudi Arabia



NATO Headquarters
Norfolk, Virginia



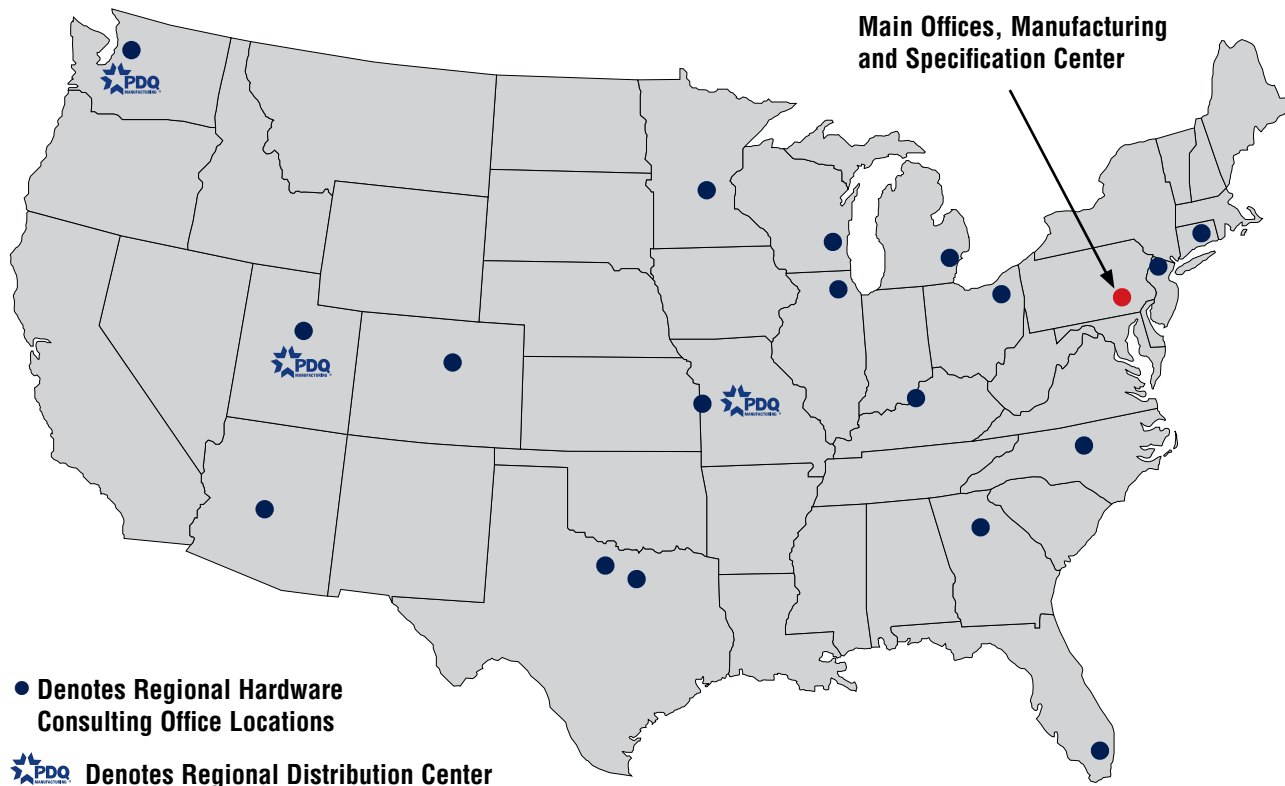
Lake County Veterans Administration
Baldwin, Michigan

ARCHITECTURAL SERVICES

SPECIFICATION AND DOOR HARDWARE CONSULTING - OPENINGS, DIVISION 08 71 00-

OUR HIGHLY TRAINED AND EXPERIENCED STAFF ARE EXPERTS AT:

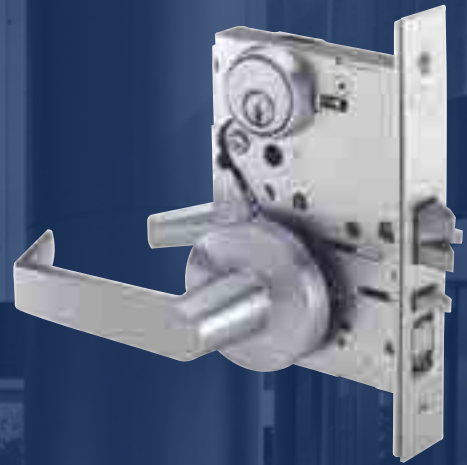
- Specification Writing
- Door Hardware Applications
- Life Safety And Code Compliance
- Safety And Security Consulting
- Pre-Approvals
- Schedules And Submittals
- Key Meetings
- Pre-Installation
- Post-Installation
- Project Specific Catalog Cut Sheets
- Wiring Diagrams
- Owner And Facility Management Meetings



To get started, call our Specification Center @ 800-441-9692

MORTISE LOCKS

MR SERIES GRADE 1



SPECIFICATIONS



- FOR DOORS:** • 1-3/4" standard, 2" and 2-1/4" special order from factory.
- BACKSET:** • 2-3/4"
- CASE:** • 12-gauge cold rolled steel mechanism • Dichromated for corrosion resistance
- ARMOR FRONT:** • Beveled 1/8" on 2"
- STRIKE:** • 625(US26) & 630 (US32D) use stainless steel as base material, all other finishes use stainless steel or brass as base material
- LATCHBOLT:** • Handed Curved Lip Strike
- DEADBOLT:** • 625(US26) & 630 (US32D) use stainless steel as base material, all other finishes use stainless steel or brass as base material
- HAND:** • 3/4" Throw • Investment Cast Stainless Steel • Anti-friction
- TRIM:** • 1" Throw • Investment Cast Stainless Steel
- KEYS:** • Most functions field reversible. Specify handing for strikes, consult factory for details
- KEYWAYS:** • F trim- forged brass levers, escutcheons and turns.
- INTERCHANGEABLE CORE:** • J & JW trim - stainless steel escutcheon and levers, PHL, MEM, MIA and BSN are solid levers, ORL, DAL and CHI are tube levers. Ball Knobs are wrought.
- KEYING:** • Two (2) per Lock
- FINISHES:** • SCC standard (Schlage C Compatible) • Also available in keyways of other manufacturers
- CERTIFICATIONS, LISTINGS, COMPLIANCES:** • 6 or 7-pin • Compatible with Best, Falcon & Arrow • Large Format IC Cores compatible with Schlage.
- WARRANTY:** • 6 or 7-pin Brass Mortise Cylinder
- COUNTRY OF ORIGIN:** • Options: MK, CMK or GMK • Zero Bitted (KO), Keyed Different (KD) or Keyed Alike (KA)
- Can be keyed into existing master key systems
- F trim -, 626 (US26D)
- J and JW Trim - 605 (US3), 606 (US4), 612 (US10), 613 (US10B), 629 (US32), 630 (US32D)
- Antimicrobial Coating available on 626 (US26D) & 630 (US32D) for F, J, and J Wide Trim.
- UL/CUL 10C listed for 3 hrs, for single doors up to 4'0" x 8'0"
- Certified to ANSI/BHMA 156.13-2012 Operational Grade 1 and Security Grade 1
- Windstorm Rated - Florida Building Code HVHZ (High Velocity Hurricane Zone) listed. Contact PDQ Technical Service for more information. (functions with deadbolts only)
- Complies with ADA (Americans with Disabilities Act) and ICC/ANSI 117.1 for Accessible and Usable Buildings
- JW Wide Escutcheon Trim complies with Unified Facilities Guide Specification 08 71 00 (August 2008)
- Lifetime Limited Warranty
- Assembled in the U.S.A. with U.S. and foreign material. Meets requirements of the Buy American Act.



ELECTRONIC ACCESS CONTROL OPTIONS:

- Motorized Locking/Unlocking (Fail Secure/Fail Safe)

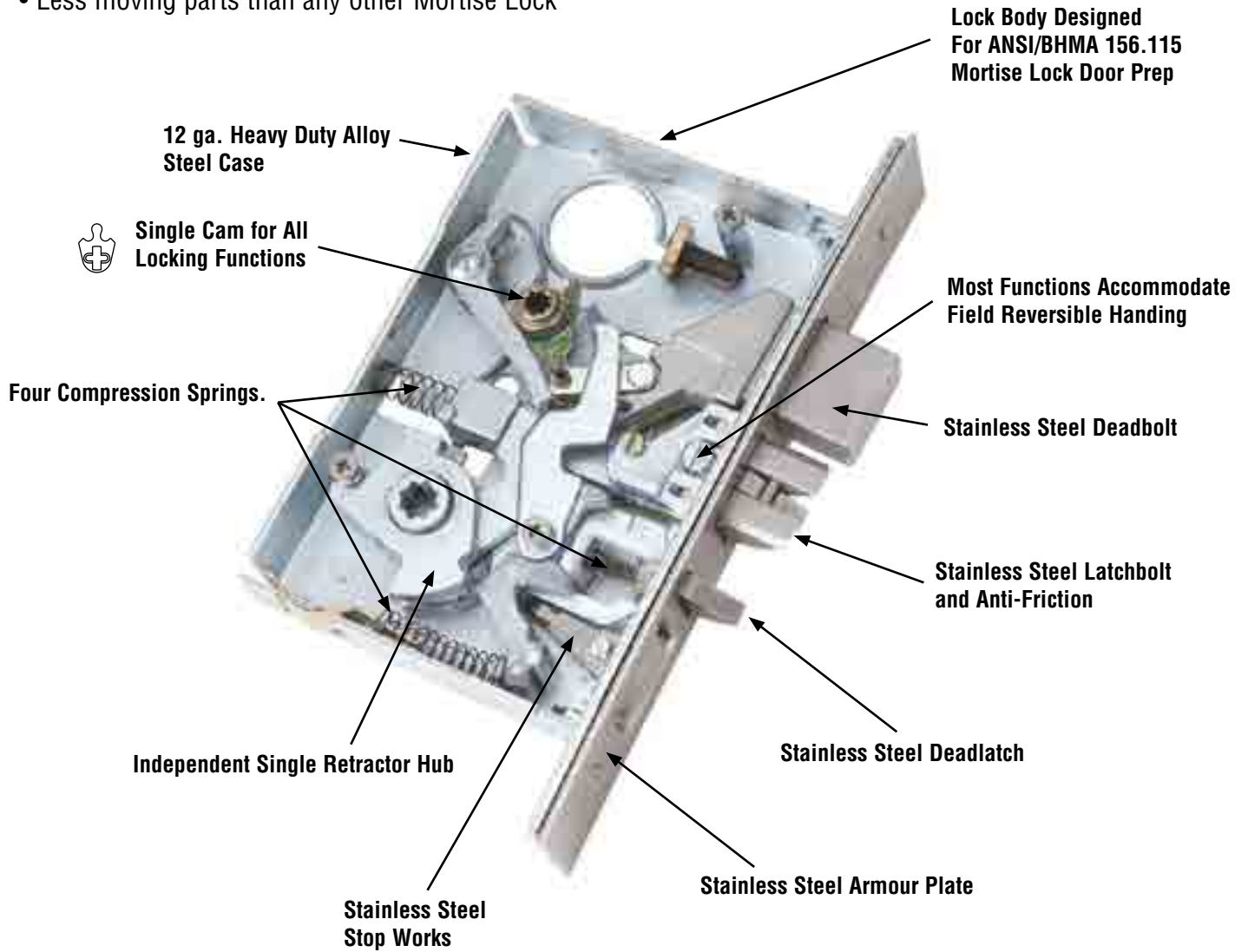
- Latch Bolt Monitoring
- Request To Exit

- Stand Alone Keypad Locks



WHAT MAKES A GREAT LOCK

- US Patent #5,813,255
- Exceeds 6 Million Cycles (Over 5 times the ANSI/BHMA A156.13-2012 Security Grade 1 Standard)
- Less moving parts than any other Mortise Lock



INDICATORS

- Red and Green conform with ANSI Z535.1 Safety Colors.



MORTISE LOCKS



F SERIES

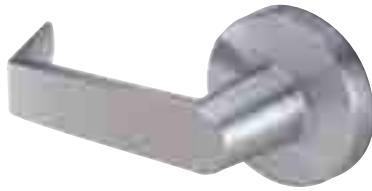


J SERIES



J WIDE SERIES

SECTIONAL TRIM OPTIONS



ROUND ROSE



OPTIONAL SQUARE ROSE

DECORATIVE LEVER COLLECTION (SPECIFIC TO SERIES)



BOSTON



CHICAGO



DALLAS



MEMPHIS



MIAMI



ORLANDO



PHILADELPHIA



BALL KNOB

FINISH OPTIONS (SPECIFIC TO SERIES)



605 (US3)
Bright Brass,
Clear Coated



606 (US4)
Satin Brass,
Clear Coated



612 (US10)
Satin Bronze,
Clear Coated



613 (US10B)
Oil Rubbed Bronze,
Oxidized Satin
Bronze, Oil Rubbed,
No Coating



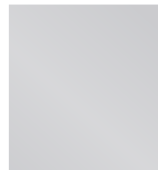
619 (US15)
Satin Nickel
Shown for
Reference Only.
See note below.



626 (US26D)
Satin Chromium
Plated, No Coating



629 (US32)
Bright Stainless
Steel, No Coating



630 (US32D)
Satin Stainless
Steel, No Coating

MORTISE DEADBOLTS

MJ SERIES



SHOWN WITH STANDARD THUMBTURN



SHOWN WITH OPTIONAL "ADA"
COMPLIANT THUMBTURN

SPECIFICATIONS



FOR DOORS:

- 1-3/4".

BACKSET:

- 2-3/4"

CASE:

- Steel—Dichromated for corrosion resistance.

FACEPLATE:

- 1-1/4" x 5-5/8"

FRONT:

- 2-1/4" x 1" • Stainless Steel or Wrought Brass

STRIKE:

- 1-1/8" x 2-1/2"

DEADBOLT:

- 1" Throw • Stainless Steel

HAND:

- Non-handed except for function MJ134 Classroom.

KEYS:

- Two (2) per Lock

KEYWAYS:

- SCC standard (Schlage C Compatible) • Also available in keyways of other manufacturers

INTERCHANGEABLE

CORE:

- 6 or 7-pin • Compatible with Best, Falcon & Arrow • Large Format IC Cores compatible with Schlage.

CYLINDER:

- 6 or 7-pin Mortise Cylinder

KEYING:

- Options: MK, CMK or GMK • Zero Bitted (KO), Keyed Different (KD) or Keyed Alike (KA)
Can be keyed into existing master key systems

FINISHES:

- 630 (US32D)

CERTIFICATIONS,

- UL/CUL listed

LISTINGS, COMPLIANCES:

- Meets requirements of the Buy American Act.

WARRANTY:

- 10-Year Limited Warranty

TUBULAR LOCKS

TJ APARTMENT SERIES



SPECIFICATIONS



- FOR DOORS:** • For doors 1-3/8" (35mm) to 1-3/4" (44mm) thick standard
- BACKSET:** • 2-3/4" (70mm) standard Optional: 2-3/8" (60mm);
- STRIKE:** • "Full Lip" Strike—1-5/8" x 2-1/4" x 3/32" Standard
- ROSE:** • Rose Diameter 2-3/8"
- DOOR PREP:** • ANSI Standard 161 Door Prep • 160 door prep optional
- LATCH BOLTS:** • 2-3/4" standard. 2-3/8" optional.
- HAND:** • Non-handed except for functionMJ134 Classroom. See function table.
- FINISHES:** • 630 (US32D) • Antimicrobial Coating available.
- TRIM:** • Stainless Steel Levers and Roses
- CERTIFICATIONS, LISTINGS, COMPLIANCES, WARRANTY:** • Complies with ADA (Americans with Disabilities Act) and ICC/ANSI 117.1 for Accessible and Usable Buildings.
- Five (5) year limited warranty



OPTIONAL SQUARE ROSE

DECORATIVE LEVER DESIGNS



BOSTON



CHICAGO



DALLAS



MEMPHIS



MIAMI



ORLANDO



PHILADELPHIA



BALL KNOB

CYLINDRICAL LOCKS GRADE 1

XGT SERIES EXTRA HEAVY DUTY



PERFORMANCE



- Factory tested to over 3 million cycles (3 times the ANSI/BHMA Grade 1 standard)
- Lever torque tested to over 3,000 in-lbs (4 times the ANSI/BHMA Grade 1 standard)

SPECIFICATIONS

PERFORMANCE, MECHANICAL:	<ul style="list-style-type: none">• Factory tested to over 3 million cycles (3 times the ANSI/BHMA Grade 1 standard)• Lever torque tested to over 3,000 in-lbs (4 times the ANSI/BHMA Grade 1 standard)
FOR DOORS:	<ul style="list-style-type: none">• 1-3/4" to 2-1/4" thick • Preset for 1-3/4" door
APPLICATION:	<ul style="list-style-type: none">• Through door thru-bolting
DOOR PREP:	<ul style="list-style-type: none">• Standard ANSI A156.115 (161) for Cylindrical Locks
BACKSET:	<ul style="list-style-type: none">• 2-3/4" Standard. 3-3/4" and 5" Optional (Ordered from factory only)
CHASSIS:	<ul style="list-style-type: none">• Heavy duty zinc diecast, investment cast, chromated cold rolled steel, stainless steel and EZAC™ diecast mechanism. Billet Steel spindles for locking functions
FRONT:	<ul style="list-style-type: none">• 2-1/4" x 1-1/8" • Stainless Steel or Wrought Brass • Beveled 1/8" in 2"
STRIKE:	<ul style="list-style-type: none">• ASA standard • T-Strike or Full Lip Strike optional • Stainless Steel or Wrought Brass
ROSE:	<ul style="list-style-type: none">• 3-3/8" DIA Wrought
LATCHBOLT:	<ul style="list-style-type: none">• 9/16" Throw Deadlocking • Investment Cast Stainless Steel • Anti-friction
HAND:	<ul style="list-style-type: none">• Non-handed
TRIM:	<ul style="list-style-type: none">• Solid Zinc diecast PHL, BSN or MIA Levers • 41° Lever Rotation Standard with 2-3/4" backset• Wrought Brass Roses, Concealed Screws • 65° Lever Rotation Standard with 3/4" latch for double doors (Ordered from factory only) and all 3-3/4" and 5" backsets (Ordered from factory only)
KEYS:	<ul style="list-style-type: none">• Two (2) per Lock
KEYWAYS:	<ul style="list-style-type: none">• SCC standard (Schlage C Compatible) • Also available in keyways of other manufacturers
INTERCHANGEABLE CORE:	<ul style="list-style-type: none">• Available for all keyed functions • 6 or 7-pin • Large Format IC Core available for PHL Lever ONLY.• Compatible with Best, Falcon and Arrow.
CYLINDER:	<ul style="list-style-type: none">• 6-pin Brass Insert Cylinder keyed to 5-pins
KEYING:	<ul style="list-style-type: none">• Options: MK, CMK or GMK• Zero Bitted (KO), Keyed Different (KD) or Keyed Alike (KA)• Can be keyed into existing master key systems
FINISHES:	<ul style="list-style-type: none">• 605 (US3), 606 (US4), 612 (US10), 613 (US10B), 625 (US26), 626 (US26D)• Optional Antimicrobial Coating 626 (USD26D) only†
CERTIFICATIONS, LISTINGS COMPLIANCES:	<ul style="list-style-type: none">• UL/CUL 10C listed for 3 hrs, for single doors up to 4'0" x 8'0"• Certified to ANSI/BHMA A156.2-2011, Grade 1• California Education Code Compliant (Functions GT135, GT135LED, GT145)• Federal Specification FF-H-10C (Superseded by A156.2)• Windstorm Rated - Florida Building Code HVHZ (High Velocity Hurricane Zone) listed. Contact PDQ Technical Service for more information.• Complies with ADA (Americans with Disabilities Act) and ICC/ANSI 117.1 for Accessible and Usable Buildings
WARRANTY:	<ul style="list-style-type: none">• Twenty-five (25) year Limited Warranty
COUNTRY OF ORIGIN:	<ul style="list-style-type: none">• Proudly Assembled in the U.S.A. with U.S. and foreign material.• Meets requirements of the Buy American Act
ELECTRONIC ACCESS CONTROL OPTIONS:	<ul style="list-style-type: none">• Electronic Locking/Unlocking (Fail Secure/Fail Safe)• Request To Exit



DECORATIVE LEVER DESIGNS



BOSTON



PHILADELPHIA



MIAMI



CYLINDRICAL LOCKS GRADE 1

GT SERIES HEAVY DUTY



PERFORMANCE



- Factory tested to over 3 million cycles (3 times the ANSI/BHMA Grade 1 standard)
- Lever torque tested to over 2,100 in-lbs (3 times the ANSI/BHMA Grade 1 standard)

SPECIFICATIONS

- | | |
|--|--|
| PERFORMANCE, | • Factory tested to over 3 million cycles (3 times the ANSI/BHMA Grade 1 standard) |
| MECHANICAL: | • Lever torque tested to over 2,100 in-lbs (3 times the ANSI/BHMA Grade 1 standard) |
| FOR DOORS: | • 1-3/4" to 2-1/4" thick • Preset for 1-3/4" door |
| APPLICATION: | • Through door thru-bolting |
| DOOR PREP: | • Standard ANSI A156.115 (161) for Cylindrical Locks |
| BACKSET: | • 2-3/4" Standard. 3-3/4" and 5" Optional (Ordered from factory only) |
| CHASSIS: | • Heavy duty zinc diecast, investment cast, chromated cold rolled steel, stainless steel and EZAC™ diecast mechanism. Billet Steel spindles for locking functions |
| FRONT: | • 2-1/4" x 1-1/8" • Stainless Steel or Wrought Brass • Beveled 1/8" in 2" |
| STRIKE: | • ASA standard • T-Strike or Full Lip Strike optional • Stainless Steel or Wrought Brass |
| ROSE: | • 3-3/8" DIA Wrought |
| LATCHBOLT: | • 9/16" Throw Deadlocking • Investment Cast Stainless Steel • Anti-friction |
| HAND: | • Non-handed |
| TRIM: | • Solid Zinc diecast PHL, BSN or MIA Levers • 41° Lever Rotation Standard with 2-3/4" backset |
| KEYS: | • Wrought Brass Roses, Concealed Screws • 65° Lever Rotation Standard with 3/4" latch for double doors (Ordered from factory only) and all 3-3/4" and 5" backsets (Ordered from factory only) |
| KEYWAYS: | • Two (2) per Lock |
| INTERCHANGEABLE CORE: | • SCC standard (Schlage C Compatible) • Also available in keyways of other manufacturers |
| CYLINDER: | • Available for all keyed functions • 6 or 7-pin • Large Format IC Core available for PHL Lever ONLY. |
| KEYING: | • Compatible with Best, Falcon and Arrow. |
| FINISHES: | • 6-pin Brass Insert Cylinder keyed to 5-pins |
| CERTIFICATIONS, LISTINGS COMPLIANCES: | <ul style="list-style-type: none"> • Options: MK, CMK or GMK • Zero Bitted (KO), Keyed Different (KD) or Keyed Alike (KA) Can be keyed into existing master key systems • 605 (US3), 606 (US4), 612 (US10), 613 (US10B), 625 (US26), 626 (US26D) • Optional Antimicrobial Coating 626 (USD26D) only† • UL/CUL 10C listed for 3 hrs, for single doors up to 4'0" x 8'0" • Certified to ANSI/BHMA A156.2-2011, Grade 1 • California Education Code Compliant (Functions GT135, GT135LED, GT145) • Federal Specification FF-H-10C (Superseded by A156.2) • Windstorm Rated - Florida Building Code HVHZ (High Velocity Hurricane Zone) listed. Contact PDQ Technical Service for more information. • Complies with ADA (Americans with Disabilities Act) and ICC/ANSI 117.1 for Accessible and Usable Buildings • Twenty-five (25) year Limited Warranty |
| WARRANTY: | • Proudly Assembled in the U.S.A. with U.S. and foreign material. |
| COUNTRY OF ORIGIN: | • Meets requirements of the Buy American Act |

DECORATIVE LEVER DESIGNS



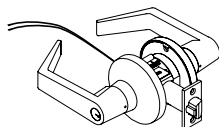
BOSTON



PHILADELPHIA



MIAMI



ELECTRONIC ACCESS CONTROL OPTIONS:

- Electronic Locking/Unlocking (Fail Secure/Fail Safe)
- Request To Exit



- Stand Alone Key Pad Trim



CYLINDRICAL LOCKS GRADE 1

THE STORY BEHIND PDQ'S XGT AND GT SERIES GRADE 1

TRIPLE THICK LEAF SPRING HELPS ELIMINATE LEVER SAG FOR OVER 3 MILLION CYCLES (3 TIMES THE ANSI/BHMA GRADE 1 STANDARD)



CAST ALLOY SPINDLE YIELDS OVER 2,100 IN-LBS LEVER TORQUE RESISTANCE (3 TIMES THE ANSI/BHMA GRADE 1 STANDARD). NO CLUTCHING MECHANISM REQUIRED



EXCLUSIVE TO THE XGT SERIES
CAST STAINLESS STEEL SPINDLE YIELDS OVER 3,000 IN-LBS LEVER TORQUE RESISTANCE (OVER 4 TIMES THE ANSI/BHMA GRADE 1 STANDARD). NO CLUTCHING MECHANISM REQUIRED



OVERSIZE STAINLESS STEEL LOCKING TIP AND BILLET STEEL SPINDLE LEVER TORQUE RESISTANCE RATED FOR OVER 2,100 IN-LBS (3 TIMES THE ANSI/BHMA GRADE 1 STANDARD) FOR THE GT SERIES, AND OVER 3,000 IN-LBS (OVER 4 TIMES THE ANSI/BHMA GRADE 1 STANDARD) FOR THE XGT SERIES

VANDAL RESISTANT HEAVY DUTY CAST LEVERS
ANTI-ROTATION THROUGH BOLTS AT 6 AND 12 O'CLOCK



CAST ALLOY CHASSIS



2:1 RATIO FOR 41 DEGREE LEVER ROTATION

7/8" DIA BRASS LATCH BOLT WITH 9/16" THROW



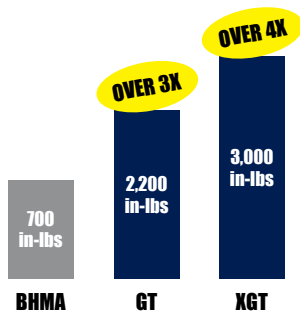
THREAD LOCK PATCH STANDARD ON ASSEMBLY AND MOUNTING FASTENERS KEEPS THE LOCK BODY INTACT IN THE MOST CHALLENGING HIGH USE INSTALLATIONS.



HEAVY GAGE STEEL ANTI ROTATION PLATE IS KEYED TO THE CHASSIS IN 3 LOCATIONS TO RESIST THE MOST EXTREME AND ABUSIVE SITUATIONS.

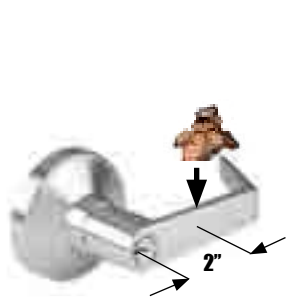
PDQ'S GRADE 1 CYLINDRICAL LOCKS ARE THE STRONGEST IN THE INDUSTRY.

LEVER TORQUE RESISTANCE EXCEEDS 4 TIMES THE ANSI/BHMA GRADE 1 STANDARD.



BUT WHAT DOES THIS LEVER TORQUE RESISTANCE MEAN?

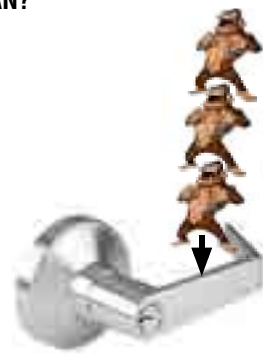
- Eliminates the need for clutching/breakaway feature!!



ANSI/BHMA
Less than One Gorilla



GT Series Can Hold
More Than Two
500lb Gorillas



XGT Series Can Hold
More Than Three
500lb Gorillas

CYLINDRICAL LOCKS GRADE 1

SCHOOL SECURITY SOLUTIONS

PDQ's Patented (US Patent #9,187,928) GT 135 LED Classroom Intruder Cylindrical Lock is designed to allow a staff member to use the inside cylinder to lock the outside of the door, without compromising safety to the occupants in the room. But how does a staff member know if the outside lever is locked? Until now, it required opening the door and checking the lever. PDQ's 135 LED Classroom Intruder function eliminates the need to open the door. Simply press the button on the lock, and...if the Red LED lights up, the outside lever is locked and secure. If the Red LED does not light up, this indicates the outside lever is not locked and secure.



LEVER DESIGNS



FEATURES

- Complies with California Education Code (Functions GT135, GT135LED, GT145)
- Red LED (Light Emitting Diode) outside lever status indicator.
- Pushing the button located on the rose of the inside lock, Red LED illuminates indicating the outside lever is locked.
- Offered with cylinder housings compatible with Best® Small Format Inter-changeable cores, Schlage® Large Format Interchangeable cores and most others.
- **Large Format Inter-changeable cores only available with PHL lever.**
- Keying options available, compatible with most key systems.
- Battery life rating: 10 years*
- Battery type: CR1220
- Patented (US Patent #9,187,928)

PERFORMANCE, MECHANICAL

- Factory tested to over 2 million cycles (2 times the ANSI/BHMA Grade 1 std)
- Lever torque tested to 2,100 in-lbs (3 times the ANSI/BHMA Grade 1 std)



OUTSIDE LEVER UNLOCKED



TO CHECK THE SECURITY OF THE OUTSIDE LEVER, PRESS THE BUTTON. IF THE RED LED LIGHTS UP, THAT CONFIRMS THE OUTSIDE LEVER IS LOCKED AND SECURE.

SCHOOL SECURITY FUNCTIONS

FUNCTION	FUNCTION NUMBER	INSIDE OUTSIDE	DESCRIPTION	ANSI FUNCTION
KEYED				
WITH LED STATUS INDICATOR				
Vestibule Class Room Security	GT135LED		<ul style="list-style-type: none"> • Latchbolt operated by lever from either side • Key in either lever locks outside lever • Key in either lever unlocks outside lever • Inside lever always free • Red LED Outside Lever Status Indicator • Lock Directional Arrow • Patent # 9,187,928 	F110
WITHOUT LED STATUS INDICATOR				
Vestibule Class Room Security	GT135		<ul style="list-style-type: none"> • Latchbolt operated by lever from either side • Key in either lever locks outside lever • Key in either lever unlocks outside lever • Inside lever always free 	F110
Vestibule Class Room Security	GT145		<ul style="list-style-type: none"> • Latchbolt operated by lever from either side • Key in either lever locks outside lever • Key in either lever unlocks outside lever • Inside lever always free • Lock Directional Arrow 	F110
NON KEYED				
Time Out Lock	GT173		<ul style="list-style-type: none"> • Latchbolt by lever from either side unless push button on outside is depressed. Lock returns to passage mode upon release of push button. • Inside lever locked only when pushing button on outside lever. • Inside lever unlocked by emergency release of button from outside. 	—

*Battery tested to over 7,300 illumination cycles. 10 year life rating is calculated using 1 sec per illumination @ 2 illuminations per day @ 365 days per year @ 10 years

CYLINDRICAL LOCKS GRADE 1

SX SERIES BALL KNOB



SPECIFICATIONS



- FOR DOORS:** • 1-3/8" to 2" thick.
- DOOR PREP:** • Fits Standard 161 Door Prep.
- BACKSET:** • 2-3/4", 2-3/8", 5".
- CASE:** • Steel, Yellow Chromate Plate
- FRONT:** • 2-1/4" x 1-1/8" or 2-1/4" x 1" • Stainless Steel or Wrought Bronze.
- STRIKE:** • 4-7/8" x 1-1/4" (ASA). "T" or "FL" Strike Optional. • Stainless Steel or Wrought Bronze.
- ROSE:** • 3" DIA Wrought
- HAND:** • Non-handed
- TRIM:** • Stainless Steel
- KEYWAYS:** • SCC Standard (Schlage C Compatible) • Available in Keyways of Most Major Manufacturers
- CYLINDER:** • SFIC Core. (Cylinder not included)
- KEYING:** • Standard Core is available and can be MK, CMK, GMK, or CK. Available Zero Bitted (KO), Keyed Different (KD), Keyed Alike (KA). Can be keyed into existing masterkey systems of other manufacturers.
- FINISHES:** • 630 (US32D).
• Optional Antimicrobial Coating available
- CERTIFICATIONS, LISTINGS** • Certified to ANSI/BHMA A156.2-2011, Grade 1
- COMPLIANCES:** • UL/CUL 10C listed for 3 hrs, for single doors up to 4'0" x 8'0"
- WARRANTY:** • Five (5) Year Limited Warranty

CYLINDRICAL LOCKS GRADE 2

GP SERIES HEAVY DUTY



SPECIFICATIONS



- FOR DOORS:** • 1-3/8" to 1-3/4" • Preset for 1-3/4" door
- APPLICATION:** • Through door thru-bolting • Fits standard 160 and 161 Door prep
- BACKSET:** • 2-3/4" standard • 2-3/8", 5" optional
- CHASSIS:** • Heavy duty zinc diecast, investment cast, cold rolled steel, stainless steel and EZACT™ diecast mechanism
- FRONT:** • 2-1/4" x 1-1/8" or 2-1/4" x 1" • Stainless Steel or Wrought Brass • Beveled 1/8" on 2"
- STRIKE:** • ASA standard • T-Strike or Full Lip Strike optional • Stainless Steel or Wrought Brass
- ROSE:** • 3-3/8" DIA Wrought
- TORQUE RESISTANCE:** • Exceeds 1600 in. lbs.
- LATCHBOLT:** • 1/2" Throw
- HAND:** • Non-handed
- TRIM:** • Solid Zinc diecast PHL, BSN or MIA Levers • 65° Lever Rotation • Wrought Brass Roses • Concealed Screws
- KEYS:** • Two (2) per Lock
- KEYWAYS:** • SCC standard (Schlage C Compatible) • Also available in keyways of other manufacturers
- INTERCHANGEABLE CORE:** • Available for all keyed functions • 6 or 7-pin
 - Large Format IC Core available for PHL Lever ONLY. For other lever shapes, contact PDQ Customer Service.
- CYLINDER:** • 6-pin Brass Insert Cylinder keyed to 5-pins
- KEYING:** • Options: MK, CMK or GMK
 - Zero Bitted (KO), Keyed Different (KD) or Keyed Alike (KA)
 - Can be keyed into existing master key systems
- FINISHES:** • 605 (US3), 606 (US4), 612 (US10), 613 (US10B), 625 (US26), 626 (US26D)
 - Optional Antimicrobial Coating
- CERTIFICATIONS, LISTINGS, COMPLIANCES:** • UL/CUL 10C listed for 3 hrs, for single doors up to 4'0" x 8'0"
 - Certified to ANSI/BHMA 156.2-2003, Grade 2
 - Windstorm Rated - Florida Building Code listed FL3262, ANSI A250.13, ASTM E1886, ASTM E330, Outswing: 350 ft-lbs., Inswing: N/R, Design Load Rating: 685 lbf.
 - Complies with ADA (Americans with Disabilities Act) and ICC/ANSI 117.1 for Accessible and Usable Buildings
- WARRANTY:** • Eight (8) Year Limited Warranty
- COUNTRY OF ORIGIN:** • Assembled in the U.S.A. with U.S. and foreign material. Meets requirements of the Buy American Act.

DECORATIVE LEVER COLLECTION



BOSTON



PHILADELPHIA



MIAMI



CYLINDRICAL LOCKS GRADE 2

SD SERIES COMMERCIAL DUTY



SPECIFICATIONS



- FOR DOORS:** • 1-3/8" to 1-3/4" thick • Preset for 1-3/4" door
- APPLICATION:** • Through door thru-bolting • Fits standard 160 and 161 Door prep
- BACKSET:** • 2-3/4" standard • 2-3/8" optional
- CHASSIS:** • Heavy-gauge cold rolled steel mechanism • Dichromated for corrosion resistance
- FRONT:** • 2-1/4" x 1-1/8" or 2-1/4" x 1" • Stainless Steel or Wrought Brass • Beveled 1/8" on 2"
- STRIKE:** • ASA standard • T-Strike or Full Lip Strike optional
- Stainless Steel or Wrought Brass
- ROSE:** • 3-3/8" DIA Wrought
- LATCHBOLT:** • 1/2" Throw
- HAND:** • Non-handed (Except Memphis)
- TRIM:** • Solid Zinc diecast PHL, BSN, MIA, MEM and ORL Levers
- Wrought Brass Roses • Concealed Screws
- KEYS:** • Two (2) per Lock
- KEYWAYS:** • SCC standard (Schlage C Compatible)
- Also available in keyways of other manufacturers
- INTERCHANGEABLE CORE:** • 6 or 7-pin • Compatible with Best, Falcon & Arrow
- Not available with Memphis lever
- CYLINDER:** • 6-pin Brass Insert Cylinder keyed to 5-pins
- KEYING:** • Options: MK, CMK or GMK
- Zero Bitted (KO), Keyed Different (KD) or Keyed Alike (KA)
- Can be keyed into existing master key systems
- FINISHES:** • 605 (US3), 613 (US10B), 626 (US26D)
- CERTIFICATIONS, LISTINGS:** • UL/CUL 10C listed for 3 hrs, for single doors up to 4'0" x 8'0"
- Certified to ANSI/BHMA 156.2-2003, Grade 2
- COMPLIANCES:** • Complies with ADA (Americans with Disabilities Act)
- and ICC/ANSI 117.1 for Accessible and Usable Buildings
- Meets requirements of the Buy American Act.
- WARRANTY:** • Five (5) year Limited Warranty

DECORATIVE LEVER COLLECTION



BOSTON



PHILADELPHIA



MEMPHIS



MIAMI



ORLANDO



SV SERIES BALL KNOB



SPECIFICATIONS



- FOR DOORS:** • 1-3/8" to 1-3/4" thick
- BACKSET:** • 2-3/4" standard • 2-3/8", 5" optional
- FRONT:** • 2-1/4" x 1-1/8" or 2-1/4" x 1" • Stainless Steel or Wrought Brass
- STRIKE:** • ASA standard • T-Strike or Full Lip Strike Optional
- ROSE:** • 3" DIA Wrought
- LATCHBOLT:** • 1/2" Throw
- HAND:** • Non-handed
- TRIM:** • Stainless Steel or Wrought Brass Knobs and Roses
- KEYS:** • Two (2) per Lock
- KEYWAYS:** • SCC Standard (Schlage C Compatible) • Available in Keyways of Most Major Manufacturers
- INTERCHANGEABLE CORE:** • Available for all keyed functions • 6 or 7-pin • Compatible with Best, Falcon and Arrow
- CYLINDER:** • 6-pin Brass Insert Cylinder keyed to 5-pins • SFIC available (contact factory)
- KEYING:** • Options: MK, CMK or GMK • Zero Bitted (KO), Keyed Different (KD) or Keyed Alike (KA)
- Can be keyed into existing master key systems
- FINISHES:** • 605 (US3), 612 (US10), 613 (US10B), 630 (US32D)
- CERTIFICATIONS, LISTINGS:** • Certified to ANSI/BHMA A156.2-2011, Grade 2
- COMPLIANCES:** • UL/CUL 10C listed for 3 hrs, for single doors up to 4'0" x 8'0"
- WARRANTY:** • One (1) year Limited Warranty

INTERCONNECTED LOCKS GRADE 2

CL SERIES



SPECIFICATIONS



- FOR DOORS:** • 1-3/8" and 1-3/4" thick.
- PREPARATION:** • ANSI/BHMA A156.115 for 4" and 5-1/2" hole centers
- DUST BOX:** • Included for Latchbolt and Deadbolt.
- LATCHBOLT BACKSET:** • 2-3/8" and 2-3/4" (Default).
Specify when ordering
- DEADBOLT BACKSET:** • Field adjustable for 2-3/8" and 2-3/4" (Default).
- STRIKE:** • "T"-Strike (Default). • ASA or Full-Lip optional
- ROSE:** • 3-3/8" DIA
- INSIDE ESCUTCHEON:** • 3-3/4"W x 9-3/4"H (Wrought)
- LATCHBOLT:** • 1/2" Throw
- DEADBOLT:** • 1" Throw
- THUMBTURN:** • ADA Compliant
- HANDING:** • Non-handed (Except for Memphis Lever)
- KEYS:** • Two (2) per Lock
- KEYWAYS:** • SCC Default (Schlage C Compatible). For additional keyways, see Cylinders and Keying section.
- INTERCHANGEABLE CORE:** • 6-pin or 7-pin • Compatible with Best SFIC.
- CONVENTIONAL KEY IN KNOB/LEVER CYLINDER:** • 6-pin Cylinder keyed to 5-pins
- KEYING:** • Options: MK, CMK, or GMK, Zero Bitted (KO), Keyed Different (KD) or Keyed Alike (KA)
• Can be keyed into existing master key systems. See Keyways Section.
- FINISHES:** • 626 (US26D) Satin Chrome
- CERTIFICATIONS, LISTINGS,** • ANSI/BHMA 156.12-2008, Grade 2 (Pending)
• UL/CUL 10C listed for 3 hrs, for single doors up to 4'0" x 8'0"
- COMPLIANCES:** • Complies with ADA (Americans with Disabilities Act) and ICC/ANSI 117.1 for Accessible and Usable Buildings
- WARRANTY:** • Two (2) year Limited Warranty



INDICATOR SHOWING UNOCCUPIED



INDICATOR SHOWING OCCUPIED

Note: Other finishes available. Contact Customer Service for quote and leadtime.

DECORATIVE LEVER COLLECTION



BOSTON



MEMPHIS



MIAMI



ORLANDO



PHILADELPHIA



BORED DEADBOLTS



KT SERIES



KM SERIES



KV SERIES



UNOCCUPIED



OCCUPIED

KV SERIES WITH PRIVACY INDICATOR

KT SERIES (EXTRA HEAVY DUTY COMMERCIAL GRADE)

- FOR DOORS:** • 1-3/8" to 1-3/4"
- BACKSET:** • 2-3/4" standard • 2-3/8" available
- FRONT:** • 2-1/4" x 1-1/8" or 2-1/4" x 1"
- Stainless Steel or Wrought Brass
- STRIKE:** • 2-3/4" x 1-1/8"
- Stainless Steel or Wrought Brass
- DEADBOLT:** • 1" Throw • Brass Bolt containing two concealed 1/4" case-hardened Steel Roll Pins
- HAND:** • Non-handed
- TRIM:** • Wrought Brass Scalp
- Reinforced Zinc Diecast Rose
- KEYS:** • Two (2) per Lock
- KEYWAYS:** • SCC standard (Schlage C Compatible)
- Also available in keyways of other manufacturers
- CYLINDER:** • 6-pin Brass Mortise Cylinder keyed to 5-pins
- KEYING:** • Can be MK, CMK, GMK. Available Zero Bitted (KO), Keyed Different (KD), Keyed Alike (KA).
- FINISHES:** • 605 (US3), 606 (US4), 613 (US10B), 625 (US26) or 626 (US26D)
- WARRANTY:** • One (1) year Limited Warranty
- COUNTRY OF ORIGIN:** • Assembled in the U.S.A. with U.S. and foreign material. Meets requirements of the Buy American Act.

KV SERIES (STANDARD DUTY COMMERCIAL GRADE)



- FOR DOORS:** • 1-3/8" to 1-3/4" thick Conventional Cylinder, 1-1/2" to 2" SFIC
- BACKSET:** • 2-3/4" - 2-3/8" Adjustable
- FRONT:** • 2-1/4" x 1"
- Stainless Steel or Wrought Brass
- STRIKE:** • 2-3/4" x 1-1/8"
- Stainless Steel or Wrought Brass
- DEADBOLT:** • 1" Throw • Brass Bolt containing one concealed 1/4" case-hardened Steel Roll Pin
- HAND:** • Non-handed
- TRIM:** • Stainless Steel or Wrought Brass Scalp
- KEYS:** • Two (2) per Lock
- KEYWAYS:** • SCC standard (Schlage C Compatible)
- Also available in keyways of other manufacturers
- INTERCHANGEABLE CORE:** • 6 or 7-pin
- Compatible with Best, Falcon and Arrow
- CYLINDER:** • 6-pin Brass Insert Cylinder keyed to 5-pins
- KEYING:** • Options: MK, CMK or GMK
- Zero Bitted (KO), Keyed Different (KD) or Keyed Alike (KA)
- Can be keyed into existing master key systems
- FINISHES:** • 605 (US3), 606 (US4), 613 (US10B), 626 (US26D) or 630 (US32D)
- CERTIFICATIONS, LISTINGS, COMPLIANCES:** • UL/CUL Listed
- WARRANTY:** • One (1) year Limited Warranty

KM SERIES (HEAVY DUTY COMMERCIAL GRADE)



- FOR DOORS:** • 1-3/8" to 1-3/4" Conventional Cylinder, 1-1/2" to 2" SFIC
- BACKSET:** • 2-3/4" standard (UL)
- Option - 2-3/4" - 2-3/8" adjustable with 2-1/4" x 1" faceplate available (Not U.L. Listed)
- FRONT:** • 2-1/4" x 1-1/8" 0
- Stainless Steel or Wrought Brass
- STRIKE:** • 2-3/4" x 1-1/8"
- Stainless Steel or Wrought Brass
- DEADBOLT:** • 1" Throw • Brass Bolt containing one concealed 1/4" case-hardened Steel Roll Pin.
- HAND:** • Non-handed
- TRIM:** • Stainless Steel or Wrought Brass Scalp
- Reinforced Zinc Diecast Rose
- KEYS:** • Two (2) per Lock
- KEYWAYS:** • SCC standard (Schlage C Compatible)
- Also available in keyways of other manufacturers
- INTERCHANGEABLE CORE:** • 6 or 7-pin • Compatible with Best, Falcon and Arrow.
- CYLINDER:** • 6-pin Brass RIM Cylinder keyed to 5-pins.
- KEYING:** • Options: MK, CMK or GMK • Zero Bitted (KO), Keyed Different (KD) or Keyed Alike (KA)
- Can be keyed into existing master key systems
- FINISHES:** • 605 (US3), 606 (US4), 613 (US10B), 626 (US26D) or 630 (US32D)
- CERTIFICATIONS, LISTINGS, COMPLIANCES:** • UL/CUL Listed
- Thumbturn complies with ADA (Americans with Disabilities Act) and ICC/ANSI 117.1 for Accessible and Usable Buildings
- WARRANTY:** • One (1) year Limited Warranty

KV SERIES WITH PRIVACY INDICATOR (LIGHT DUTY COMMERCIAL GRADE)

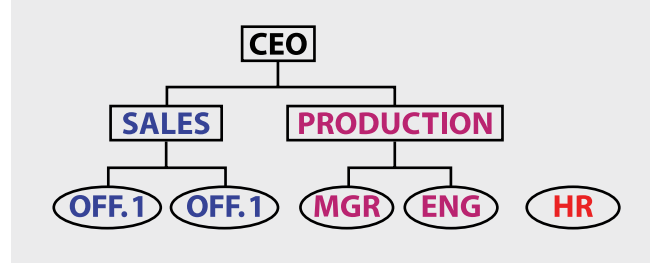
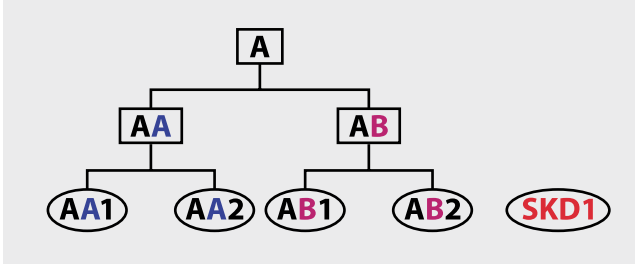


- PRIVACY INDICATOR:** • Symbol showing Unoccupied-Occupied
- THUMBTURN:** • ADA compliant
- FOR DOORS:** • 1-3/8" to 1-3/4"
- BACKSET:** • 2-3/4" - 2-3/8" Adjustable
- BORE:** • 2-1/8"
- FACEPLATE:** • 1" x 2-1/4"
- STRIKE:** • 1-1/8" x 2-3/4"
- DEADBOLT:** • 1" Throw with hardened steel roller
- TRIM:** • Wrought Brass
- KEYS:** • Emergency Key Included
- FINISHES:** • 613 (US10B) Oil Rubbed Bronze, 626 (US26D) Satin Chrome
- FUNCTION:** • KV125IND
- WARRANTY:** • One (1) year Limited Warranty

KEY SYSTEMS

MASTER KEYING KEY SYSTEMS DESIGN

THERE IS NO PROJECT TOO BIG FOR PDQ'S KEY SYSTEMS DESIGN GROUP.



MASTER KEY SYSTEM PLANNING FORM

Sold To: _____		Ship To: _____		<input type="checkbox"/> Sheet 1 of _____	
_____		_____		<input type="checkbox"/> Date _____	
_____		_____		Purchase Order No. _____	
Job Name and Address: _____ _____ _____			Key Quantity: _____ Qty _____		Change Keys: _____ Qty _____
			<input type="checkbox"/> GGGM _____		<input type="checkbox"/> Per Cylinder _____
			<input type="checkbox"/> GGM _____		<input type="checkbox"/> Per Keyed alike Group _____
			<input type="checkbox"/> GGM _____		<input type="checkbox"/> Per Keyed different cyl. _____
			<input type="checkbox"/> GM _____		Special Function _____
			MK/Group _____		Control _____ Main _____ Qty _____
			_____		CMK _____ HKP _____
			_____		CMK Ctrl _____ MECH _____
			_____		EMK _____ ENG _____
			_____		SKD Ctrl _____ JMN _____
			_____		SKD CMK _____ OTHR _____
			_____		Blockout _____ OTHR _____
System Info: <input type="checkbox"/> NEW <input type="checkbox"/> Existing System			Cross Keying: Key Symbol _____ Operated by (OB) _____		
PDQ SO # _____			_____		
Your original PO# _____			_____		
Original date of order _____			_____		
System Level: <input type="checkbox"/> 1-SKD <input type="checkbox"/> 2-MK <input type="checkbox"/> 3-GM <input type="checkbox"/> 4-GGM			_____		
<input type="checkbox"/> 4-GGGM <input type="checkbox"/> 4-GGGGM			_____		
Type: <input type="checkbox"/> High Security <input type="checkbox"/> IC <input type="checkbox"/> Standard <input type="checkbox"/> Other			_____		
Keys: <input type="checkbox"/> Standard SCC			Additional Information: (Including system expansion and Special Remarks)		
<input type="checkbox"/> Restricted			_____ _____ _____		
<input type="checkbox"/> Specific Keyway _____			_____ _____		
*Restricted Keyway requires system approval			_____		
<input type="checkbox"/> 5 Pin <input type="checkbox"/> 6 Pin <input type="checkbox"/> 7 Pin			Name of individual in organization who is knowledgeable about this project should clarification be required.		
Key Control: <input type="checkbox"/> Visual Key Control Keys Only			Name: _____		
<input type="checkbox"/> Visual Key Control Keys and Cylinders			Phone: _____		
<input type="checkbox"/> Visual Key Control Cylinders Only			Premium Quality without the Premium Price		
<input type="checkbox"/> Concealed Key Control Keys and Cylinders			2754 Creek Hill Road, Leola, PA 17540 • 1-800-441-9692		
<input type="checkbox"/> Concealed I Key Control Cylinders Only					
<input type="checkbox"/> DND					
<input type="checkbox"/> US Property DO NOT DUPLICATE					
<input type="checkbox"/> Special Marking _____					

This sheet to be used with Keying Schedule Form

KEYING SCHEDULE

Customer Name: _____		Purchase Order No. _____		Page _____ of _____				
Quantity: _____	Series/Function/Trim: _____	Finish: _____	Options: _____					
Special Stamping:								
Item	Quantity	Key Symbol	Hand (Specify Qty)				Door Number (Up to 10 Characters)	Heading (Up to 10 Characters)
			RH	LH	RHR	LHR		
Premium Quality without the Premium Price								
2754 Creek Hill Road, Leola, PA 17540 • 1-800-441-9692								

To be used with PDQ Master Keying Layout form

CYLINDERS / KEYING / KEYWAYS

CONVENTIONAL CYLINDERS



- KEY IN KNOB/LEVER
- DEFAULT KEYWAY: SCHLAGE C'
- 5 OR 6 PIN
- FINISHES: 606, 626



- MORTISE
- DEFAULT KEYWAY: SCHLAGE C'
- 5 OR 6 PIN
- FINISHES: 605, 606, 612, 613, 625, 626



- RIM
- DEFAULT KEYWAY: SCHLAGE C'
- 5 OR 6 PIN
- FINISHES: 605, 606, 612, 613, 625, 626

INTERCHANGEABLE CORES



- BEST COMPATIBLE SMALL FORMAT -6 OR 7 PIN
- DEFAULT KEYWAY: BEST A
- FINISHES: 606, 626



- SCHLAGE COMPATIBLE LARGE FORMAT (FULL SIZE) -6 PIN
- DEFAULT KEYWAY: SCHLAGE C
- FINISHES: 606, 626

HIGH SECURITY



- KEY IN KNOB/LEVER
- DEFAULT KEYWAY: SCHLAGE C'
- UL437
- 6 PIN
- FINISHES: 605, 613, 626



- MORTISE
- DEFAULT KEYWAY: SCHLAGE C'
- UL437
- 6 PIN
- FINISHES: 605, 613, 626



- BEST COMPATIBLE SMALL FORMAT
- DEFAULT KEYWAY: BEST A
- 6 OR 7 PIN
- FINISHES: 626
- SCHLAGE COMPATIBLE LARGE FORMAT (FULL SIZE)
- DEFAULT KEYWAY: BEST A
- 6 PIN
- FINISHES: 626

HOUSINGS



- MORTISE
- 6 OR 7 PIN CORES
- FINISHES: 605, 606, 612, 613, 625, 626



- RIM
- 6 OR 7 PIN CORES
- FINISHES: 605, 606, 612, 613, 625, 626

KEYWAYS

CONVENTIONAL CYLINDER		SMALL FORMAT INTERCHANGEABLE CORE		LARGE FORMAT INTERCHANGEABLE CORE			
KEYWAY	PDQ KEYWAY DESIGNATOR	KEYWAY (BEST COMPATIBLE)	PDQ KEYWAY DESIGNATOR	KEYWAY (SCHLAGE COMPATIBLE)	PDQ KEYWAY DESIGNATOR		
Schlage C (Default)	SCC	BEST A (Default), B, C, D, E, F, G, H, J, K, L, M, Q, R, WA, WB, WG, WH, TB, TD, TE, R	A (Default), B, C, D, E, F, G, H, J, K, L, M, Q, R, WA, WB, WG, WH, TB, TD, TE, R	Schlage C (Default)	SCC		
PDQ Restricted	TA			PDQ Restricted	TA		
Arrow AR1	AR1						
Corbin 59A1	CO59A1						
Corbin 60	CO6						
Corbin L4	CL4						
Russwin D1	RUD				PDQ1		
Russwin 981	RUD981			PDQ Exclusive	PDQ2		
Schlage E	SCE			PDQ Exclusive and Restricted	PDQ3		
Schlage C	SCC						
Schlage C-K	SCC-K						
Sargent LA	SAL						
Sargent RA-RC	RA-RC						
Yale E1R	YA8						
Yale GA	GA						
Falcon E-R	FAL						
Kwikset	KW						

KEYING

DESCRIPTION	PDQ KEYING DESIGNATOR
Keyed Different (Default)	KD
Keyed Alike	KA
"O" Zero Bitted	KO
Master Keyed	MK
Construction Master Keyed	CMK
Grand Master Keyed	GMK

DOOR CONTROLS

7100 SERIES

GRADE 1 EXTRA HEAVY DUTY DOOR CLOSER



SPECIFICATIONS



- HANDING:** • Non-handed
- OPERATION:** • Rack and pinion design
- BODY:** • High Strength Cast Iron
- ARMS:** • Forged steel main arm • Flat style arm assembly
- ARM OPTIONS:** • Hold open arm • Track/Track Hold Open
- DS/DSHO heavy duty parallel stop arm
- Spring Cushion Stop for DS/DSHO
- EDA (Extra Duty PA Arm).
- PISTON:** • Hardened steel, 1-1/2" diameter
- ADJUSTMENT:** • Adjustable controlled closing
- Separate hydraulic backcheck standard
- Backcheck positioning valve standard
- Separate sweep, latch, backcheck intensity and backcheck positioning valves
- Optional delayed action (in addition to backcheck)
- All Adjustment Valves are STAKED.
- ADJUSTMENT VALVES:**
- FACTORY DEFAULT SPRING SETTING:**
- SIZE:** • Size 3
- MOUNTING:** • Adjustable **BARRIER FREE** BF 1 through 6
- Mounting hole pattern retrofits LCN® 4040
- Tri-packed for regular, top jamb and parallel arm installations
- Includes fasteners for hollow metal, wood or aluminum doors and frames
- Sex nuts and bolts standard
- Self drilling self tapping screws available
- COVER:** • Full plastic cover standard (non-handed), optional full metal cover available (handed)
- FINISHES:** • 605 (US3) – Polished Brass, 625 (US26) – Polished Chrome, 689 (US28) – Aluminum, 695 (N/A) – Duro Bronze, 696 (US4) – Gold
- FINISHES – SPRING CUSHION STOPS:** • 605 (US3) – Bright Brass (PVD), 613 (US10B) – Oil Rubbed Bronze (PVD), 630 (US32D) – Satin Stainless Steel
- Note: PVD (Physical Vapor Deposition) coated finishes offer outstanding resistance to wear, durability and corrosion.
- CERTIFICATIONS LISTINGS COMPLIANCES:** • UL228 listed
- ANSI/UL 10C listed for labeled swinging fire doors rated for up to and including 3 hours
- Certified to ANSI/BHMA A156.4-2006 Grade 1
- Complies with ADA (Americans with Disabilities Act) and ICC/ANSI 117.1 for Accessible and Usable Buildings
- Meets requirements of the Buy American Act
- WARRANTY:** • Twenty-five (25) year limited warranty

SPRING CUSHION STOPS



630 SATIN
STAINLESS STEEL



613 OIL RUBBED
BRONZE



605 BRIGHT
BRASS

PDQ's SCS Series Spring Cushion Stop helps reduce wear and tear on the opening. As the door begins moving through backcheck to its maximum opening angle, the stop acts as a shock absorber, dampening the impact forces.



NOTE: PLUNGER SHOWN IN RED TO ENHANCE THE CUSHIONING FEATURE.



STOP SHOWN BEFORE
DOOR IS FULLY OPENED



STOP SHOWN WHEN
DOOR IS FULLY OPENED

DOOR CONTROLS

5300/5500 SERIES

GRADE 1 STANDARD DUTY DOOR CLOSER



5300 - STREAMLINE COVER



5500 - FULL COVER

SPECIFICATIONS



- HANDING:** • Non-handed
- OPERATION:** • Rack and pinion design
- BODY:** • Cast High Strength Aluminum Alloy
- ARM:** • Stamped steel main arm
- ARM OPTIONS:** • Hold open arm • DS/DSHO heavy duty parallel stop arm
• Spring Cushion Stop for DS/DSHO • Track/Track Hold Open
- PISTON:** • Hardened steel
- ADJUSTMENT:** • Adjustable controlled closing
• Separate hydraulic backcheck standard
• Separate sweep, latch and backcheck intensity valves
• Optional adjustable delayed action (in addition to backcheck)
• Common 12" x 3/4" mounting hole pattern retrofits Norton 8300/8500® and Yale 3300/3500
- FACTORY DEFAULT SPRING SETTING:** • Size 3
- SIZE:** • Adjustable BF 1 through 6
- MOUNTING:** • Fasteners furnished for hollow metal, wood or aluminum doors and frames
• Sex nuts and bolts standard
• Tri-packed for regular, top jamb and parallel arm installations
- COVER:** • 5300 Series - Streamline plastic cover (non-handed)
• 5500 Series - Full plastic cover standard (field reversible)
- FINISHES:** • 605 (US3) - Polished Brass, 625 (US26) - Polished Chrome, 689 (US28) - Aluminum, 695 (N/A) - Duro Bronze, 696 (US4) - Gold
- FINISHES - SPRING CUSHION STOPS:** • 605 (US3) - Bright Brass (PVD), 613 (US10B) - Oil Rubbed Bronze (PVD), 630 (US32D) - Satin Stainless Steel
Note: PVD (Physical Vapor Deposition) coated finishes offer outstanding resistance to wear, durability and corrosion.
- CERTIFICATIONS LISTINGS COMPLIANCES:** • UL228 listed
• ANSI/UL 10C listed for labeled swinging fire doors rated for up to and including 3 hours
• Certified to ANSI/BHMA A156.4-2006 Grade 1
• Complies with ADA (Americans with Disabilities Act) and ICC/ANSI 117.1 for Accessible and Usable Buildings
• Meets requirements of the Buy American Act
- WARRANTY:** • Twenty-five (25) year limited warranty

SPRING CUSHION STOPS



630 SATIN
STAINLESS STEEL



613 OIL RUBBED
BRONZE



605 BRIGHT
BRASS

PDQ's SCS Series Spring Cushion Stop helps reduce wear and tear on the opening. As the door begins moving through backcheck to its maximum opening angle, the stop acts as a shock absorber, dampening the impact forces.



NOTE: PLUNGER SHOWN IN RED TO ENHANCE THE CUSHIONING FEATURE.



STOP SHOWN BEFORE
DOOR IS FULLY OPENED



STOP SHOWN WHEN
DOOR IS FULLY OPENED

DOOR CONTROLS

5100 SERIES GRADE 1 HEAVY DUTY DOOR CLOSER



SPECIFICATIONS



- HANDING:** • Non-handed
- OPERATION:** • Rack and pinion design
- BODY:** • High Strength Aluminum Alloy
- ARM:** • Stamped steel main arm
- ARM OPTIONS:** • Hold open arm • Track/Track Hold Open
• DS/DSHO heavy duty parallel stop arm
• Spring Cushion Stop for DS/DSHO
• EDA (Extra Duty PA Arm).
- PISTON:** • Hardened steel, 1-1/2" diameter
- ADJUSTMENT:** • Adjustable controlled closing
• Separate hydraulic backcheck standard
• Separate sweep, latch and backcheck intensity in addition to backcheck
• Optional delayed action
- SIZE:** • Adjustable 1 through 6 • Factory pre-set to size 3
- MOUNTING:** • Tri-packed for regular, top jamb and parallel arm installations
• Fasteners furnished for metal, wood and aluminum doors and frames
• Sex nuts and bolts standard
• Self drilling self tapping screws available
- COVER:** • Full plastic cover standard (non-handed), optional full metal cover available (handed)
- FINISHES:** • 605 (US3) – Polished Brass, 625 (US26) – Polished Chrome
689 (US28) – Aluminum, 695 (N/A) – Duro Bronze, 696 (US4) – Gold
- FINISHES – SPRING CUSHION STOPS:** • 605 (US3) – Bright Brass (PVD), 613 (US10B) – Oil Rubbed Bronze (PVD), 630 (US32D) – Satin Stainless Steel
Note: PVD (Physical Vapor Deposition) coated finishes offer outstanding resistance to wear, durability and corrosion.
- CERTIFICATIONS LISTINGS COMPLIANCES:** • UL228 listed
• ANSI/UL 10C listed for labeled swinging fire doors rated for up to and including 3 hours
• Certified to ANSI/BHMA A156.4-2006 Grade 1
• Meets requirements of the Buy American Act
- WARRANTY:** • Twenty-five (25) year limited warranty

SPRING CUSHION STOPS



630 SATIN
STAINLESS STEEL



613 OIL RUBBED
BRONZE



605 BRIGHT
BRASS

PDQ's SCS Series Spring Cushion Stop helps reduce wear and tear on the opening. As the door begins moving through backcheck to its maximum opening angle, the stop acts as a shock absorber, dampening the impact forces.



NOTE: PLUNGER SHOWN IN RED TO ENHANCE THE CUSHIONING FEATURE.



**STOP SHOWN BEFORE
DOOR IS FULLY OPENED**



**STOP SHOWN WHEN
DOOR IS FULLY OPENED**

DOOR CONTROLS

3100 SERIES

GRADE 1 COMMERCIAL DUTY DOOR CLOSER



SPECIFICATIONS



- HANDING:** • Non-handed
- OPERATION:** • Rack and pinion design
- BODY:** • High strength aluminum alloy
- ARM:** • Stamped Steel Main Arm • Round style arm assembly
- ARM OPTIONS:** • Hold Open Arm • Track/Hold Open Arm
- EDA (Extra Duty PA Arm). See How to Order Guide.
- DS/DSHO heavy duty parallel stop arm
- Spring Cushion Stop for DS/DSHO

FACTORY DEFAULT SPRING SIZE, 1-4:

- Size 2
- Hardened Steel

FACTORY DEFAULT SPRING SIZE, 3-6:

- Size 3
- Hardened Steel

ADJUSTMENT:

- Adjustable controlled closing
- Separate hydraulic backcheck standard
- Separate sweep, latch and backcheck intensity valves
- Adjustable spring size BF - 4 or 3 - 6 (see size selector table)
- Available to meet barrier opening force requirements

MOUNTING:

- Common 9-1/16" x 3/4" mounting hole pattern retrofits Yale® 50, Norton® 1600 (For more comparisons, see cross reference table)
- Tri-packed for regular, top jamb and parallel arm installations
- Includes fasteners for metal, wood and aluminum doors and frames
- Sex nuts and bolts standard
- Self drilling self tapping screws available

COVER:

- Streamline plastic cover optional

FINISHES CLOSERS:

- 689 (US28) – Aluminum, 695 (N/A) – Duro Bronze, 696 (US4) – Gold
- 605 (US3) – Bright Brass (PVD), 613 (US10B) – Oil Rubbed Bronze (PVD), 630 (US32D) – Satin Stainless Steel

FINISHES CUSHION STOPS:

- Note: PVD (Physical Vapor Deposition) coated finishes offer outstanding resistance to wear, durability and corrosion.

CERTIFICATIONS, LISTINGS, COMPLIANCES:

- UL 228 listed
- ANSI/UL 10C listed for labeled swinging fire doors rated for up to and including 3 hours.
- Certified to ANSI/BHMA A156.4-2006 Grade 1
- Meets requirements of the Buy American Act
- Complies with ADA (Americans with Disabilities Act) and ICC/ANSI 117.1 for Accessible and Usable Buildings

WARRANTY:

- Twenty-Five (25) year limited warranty

SPRING CUSHION STOPS



630 SATIN
STAINLESS STEEL



613 OIL RUBBED
BRONZE



605 BRIGHT
BRASS

PDQ's SCS Series Spring Cushion Stop helps reduce wear and tear on the opening. As the door begins moving through backcheck to its maximum opening angle, the stop acts as a shock absorber, dampening the impact forces.



NOTE: PLUNGER SHOWN IN RED TO ENHANCE THE CUSHIONING FEATURE.



STOP SHOWN BEFORE
DOOR IS FULLY OPENED



STOP SHOWN WHEN
DOOR IS FULLY OPENED

EXIT DEVICES

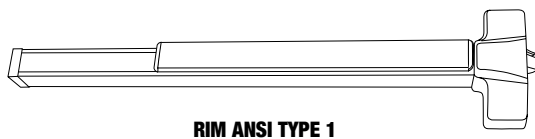
6200 SERIES

ARCHITECTURAL WIDE STILE

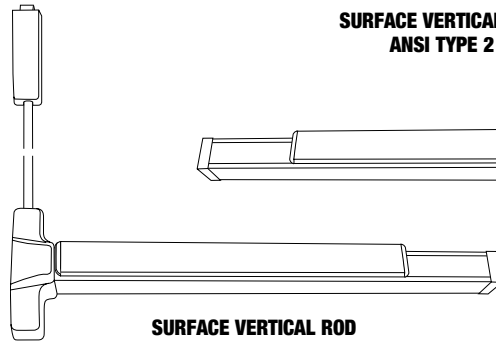
The PDQ 6200 Series offers superior durability and security in commercial applications while providing compliance with life safety and fire code requirements. The 6200 Series is ideal for stocking distributors as the exit device is universal. The function is easily determined by selecting from the extensive line of available trim options. Units are non-handed to facilitate easy field installation. The 6200 is available in a variety of architectural finishes that will compliment any decor.

NEW

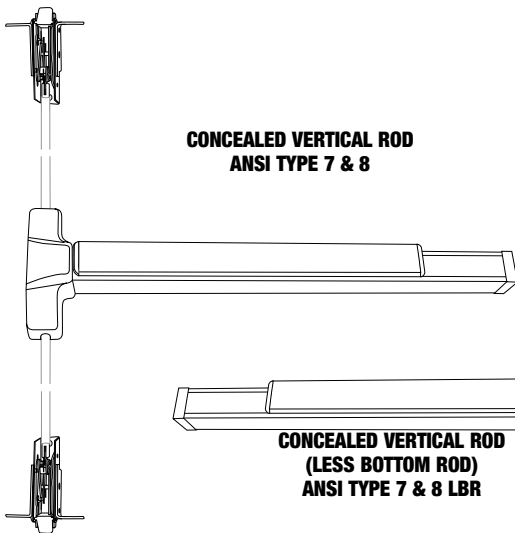
NOW AVAILABLE
WITH 630 SATIN
STAINLESS STEEL
ROLL FORMED
TOUCH PAD RAIL
AND FILLER!!



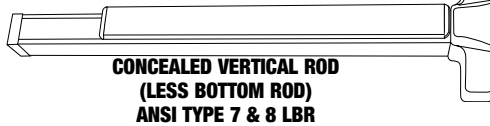
RIM ANSI TYPE 1



**SURFACE VERTICAL ROD
ANSI TYPE 2**



**CONCEALED VERTICAL ROD
ANSI TYPE 7 & 8**



**CONCEALED VERTICAL ROD
(LESS BOTTOM ROD)
ANSI TYPE 7 & 8 LBR**



MORTISE ANSI TYPE 3

EXIT DEVICE QUICK REFERENCE GUIDE

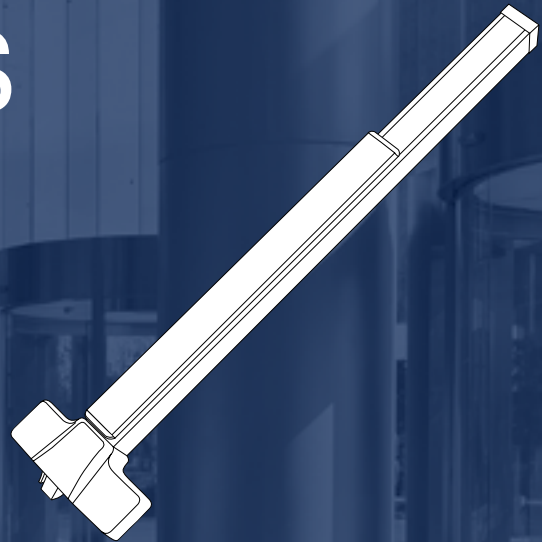
● AVAILABLE ○ NOT AVAILABLE	ARCHITECTURAL WIDE STILE				ARCHITECTURAL NARROW STILE		
	6200R	6200V	6200CV	6200M	6202R	6202V	6202CV
	RIM	SURFACE VERTICAL ROD	CONCEALED VERTICAL ROD	MORTISE	RIM	SURFACE VERTICAL ROD	CONCEALED VERTICAL ROD
DEVICE							
CERTIFICATIONS/LISTINGS/WARRANTY							
BHMA CERTIFIED TO ANSI A156.3 GRADE 1	●	●	●	●	●	●	●
FIRE LISTED TO UL10C	●	●	●	●	●	●	●
UL/ULC 305 LISTED FOR PANIC	●	●	●	●	●	●	●
FBC WINDSTORM LISTED	●	●	○	○	○	○	○
LIMITED WARRANTY	10 YEAR	10 YEAR	10 YEAR	10 YEAR	10 YEAR	10 YEAR	10 YEAR
MECHANICAL OPTIONS							
3 FT DOORS	●	●	●	●	●	●	●
4 FT DOORS	●	●	●	●	●	●	●
LESS BOTTOM ROD	○	●	●	○	○	●	●
CYLINDER DOGGING	●	●	●	●	●	●	●
ELECTRICAL OPTIONS							
ALARM	●	●	●	●	●	●	●
LATCH BOLT MONITORING	●	○	○	●	●	○	○
MOTORIZED LATCH RETRACTION	●	●	●	●	●	●	●
REQUEST TO EXIT SIGNAL SWITCH	●	●	●	●	●	●	●
REQUEST TO EXIT DUAL SIGNAL SWITCH	●	●	●	●	●	●	●
TRIM							
WIDE STILE ESCUTCHEON*	●	●	●	●	○	○	○
NARROW STILE ESCUTCHEON	●	●	○	○	●	●	●
SECTIONAL	●	●	○	○	○	○	○
GRIP PULL	●	●	○	○	●	●	●
PLATE AND PULL	●	●	○	○	○	○	○
ELECTRONIC ACCESS CONTROL							
MOTORIZED LOCKING/UNLOCKING (FAIL SECURE/FAIL SAFE)	●	●	●	○	○	○	○
STAND ALONE KEYPAD	●	●	○	○	○	○	○
LEVER SHAPES							
BOSTON	●	●	●	○	○	○	○
MIAMI	●	●	●	○	○	○	○
PHILADELPHIA	●	●	●	●	●	●	●
ORLANDO	●	●	●	○	○	○	○
FINISHES, DEVICES							
605 (US5) POLISHED BRASS	●	●	●	○	○	○	○
606 (US4) SATIN BRASS	●	●	○	○	○	○	○
613 (US10B) OIL RUBBED BRONZE	●	●	●	○	●	●	●
626 (US26D) SATIN CHROME	●	●	○	●	○	○	○
630 (US32D) SATIN STAINLESS STEEL	●	●	●	●	●	●	●
630F (US32D) FULL SATIN STAINLESS STEEL	●	●	●	●	○	○	○
ANTIMICROBIAL	●	●	●	●	●	●	●

EXIT DEVICES

6200R SERIES RIM ARCHITECTURAL WIDE STILE



NOW AVAILABLE WITH 630 SATIN STAINLESS STEEL ROLL FORMED TOUCH PAD RAIL AND FILLER!!



SPECIFICATIONS



- | | |
|-----------------------------------|---|
| CHASSIS: | <ul style="list-style-type: none">• Corrosion resistant plated steel |
| RAIL: | <ul style="list-style-type: none">• Extruded aluminum |
| TOUCH PAD: | <ul style="list-style-type: none">• Stainless steel |
| TOUCH PAD RAIL AND FILLER: | <ul style="list-style-type: none">• Extruded aluminum (standard)• For Rolled Formed 630 Satin Stainless Steel, specify finish 630F. |
| LATCH: | <ul style="list-style-type: none">• Pullman with dead latching, stainless steel, 3/4" throw |
| BACKSET: | <ul style="list-style-type: none">• 2-3/4" backset |
| PROJECTION: | <ul style="list-style-type: none">• 3-1/16" (78mm) projection• 2-19/32" (66mm) projection when dogged |
| HAND: | <ul style="list-style-type: none">• Device is non-handed• Most trim is non-handed, all handed trim is field reversible |
| DOGGING: | <ul style="list-style-type: none">• Hex key dogging standard• Cylinder dogging optional• No dogging on fire listed devices |
| MINIMUM STILE WIDTH: | <ul style="list-style-type: none">• 4-1/4" |
| DOOR THICKNESS: | <ul style="list-style-type: none">• 1-3/4" For other door thickness applications, contact PDQ Customer Service |
| DOOR WIDTH: | <ul style="list-style-type: none">• Supplied standard for 3 ft doors, "A" size devices available for doors up to 4ft.• Consult Door Width Chart to determine correct device for your applications |
| FINISHES: | <ul style="list-style-type: none">• 605 – Polished Brass, 606 – Satin Brass, 613 – Oil Rubbed Bronze, 626 – Satin Chrome, 630 – Satin Stainless Steel• Optional ‡Antimicrobial Coating available on 626 and 630 finishes only |
| FASTENERS: | <ul style="list-style-type: none">• Device supplied with sex nuts, machine screws and wood screws |
| MOUNTING HEIGHT: | <ul style="list-style-type: none">• Device centerline from finished floor: 40" (1016mm) |
| CERTIFICATIONS, LISTINGS | <ul style="list-style-type: none">• UL/ULC 305 listed for "Panic", UL10C Listed for "Fire Exit Hardware" up to 3 hours for 4'0" x 8'0"• Certified to ANSI/BHMA A156.3-2008 Grade 1 |
| COMPLIANCES: | <ul style="list-style-type: none">• Windstorm Rated - Florida Building Code HVHZ (High Velocity Hurricane Zone) listed. Contact PDQ Technical Service for more information.• Complies with ADA (Americans with Disabilities Act) and ICC/ANSI 117.1 for Accessible and Usable Buildings• Meets requirements of the Buy American Act |
| WARRANTY: | <ul style="list-style-type: none">• Ten (10) year limited warranty |



ELECTRONIC ACCESS, CONTROL OPTIONS:

- | | | |
|---|--|---|
| <ul style="list-style-type: none">• Motorized Latch Retraction• Request To Exit• Alarmed Exit/Signal Switches• Latch Bolt Monitoring | <ul style="list-style-type: none">• Stand Alone Key Pad Trim | <ul style="list-style-type: none">• Motorized Locking/Unlocking Trim• Fail Secure/Fail Safe Trim |
|---|--|---|



EXIT DEVICES

6200V SERIES SURFACE VERTICAL ROD

ARCHITECTURAL WIDE STILE



NOW AVAILABLE WITH 630 SATIN STAINLESS STEEL ROLL FORMED TOUCH PAD RAIL AND FILLER!!

SPECIFICATIONS



- | | |
|-----------------------------------|---|
| CHASSIS: | <ul style="list-style-type: none">• Corrosion resistant plated steel |
| RAIL: | <ul style="list-style-type: none">• Extruded aluminum |
| TOUCH PAD: | <ul style="list-style-type: none">• Stainless steel |
| TOUCH PAD RAIL AND FILLER: | <ul style="list-style-type: none">• Extruded aluminum (standard)• For Rolled Formed 630 Satin Stainless Steel, specify finish 630F. |
| LATCHES: | <ul style="list-style-type: none">• Top Latch — Pullman with dead latching 5/8" (16mm) throw• Bottom Latch — Pullman with 5/8" (16mm) throw, held retracted during door swing |
| BACKSET: | <ul style="list-style-type: none">• 2-3/4" backset |
| PROJECTION: | <ul style="list-style-type: none">• 3-1/16" (78mm) projection• 2- 19/32" (66mm) projection when dogged |
| HAND: | <ul style="list-style-type: none">• Device is non-handed• Most trim is non-handed, all handed trim is field reversible |
| DOGGING: | <ul style="list-style-type: none">• Hex key dogging standard• Cylinder dogging optional• No dogging on fire listed devices |
| MINIMUM STILE WIDTH: | <ul style="list-style-type: none">• 4-1/4" |
| DOOR THICKNESS: | <ul style="list-style-type: none">• 1-3/4" For other door thickness applications, contact PDQ Customer Service |
| DOOR WIDTH: | <ul style="list-style-type: none">• Supplied standard for 3 ft doors, "A" size devices available doors up to 4ft.• Consult Door Width Chart to determine correct device for your applications |
| FINISHES: | <ul style="list-style-type: none">• 605 – Polished Brass, 606 – Satin Brass, 613 – Oil Rubbed Bronze, 626 – Satin Chrome, 630 – Satin Stainless Steel• Optional ‡Antimicrobial Coating available on 626 and 630 finishes only |
| FASTENERS: | <ul style="list-style-type: none">• Device supplied with sex nuts, machine screws and wood screws |
| MOUNTING HEIGHT: | <ul style="list-style-type: none">• Device centerline from finished floor: 40" (1016mm) |
| VERTICAL RODS: | <ul style="list-style-type: none">• 1/2" (13mm) diameter tubular stock for 7' doors (default). Extension Rods available for doors up to 10'. |
| CERTIFICATIONS, LISTINGS | <ul style="list-style-type: none">• UL/ULC 305 listed for "Panic", UL10C Listed for "Fire Exit Hardware" labeled for up to 3 hours for 4'0" x 10'0" maximum single, 8'0" x 10'0" maximum pairs |
| COMPLIANCES: | <ul style="list-style-type: none">• Certified to ANSI/BHMA A156.3-2008 Grade 1• Windstorm Rated - Florida Building Code HVHZ (High Velocity Hurricane Zone) listed. Contact PDQ Technical Service for more information.• Complies with ADA (Americans with Disabilities Act) and ICC/ANSI 117.1 for Accessible and Usable Buildings |
| WARRANTY: | <ul style="list-style-type: none">• Ten (10) year limited warranty |



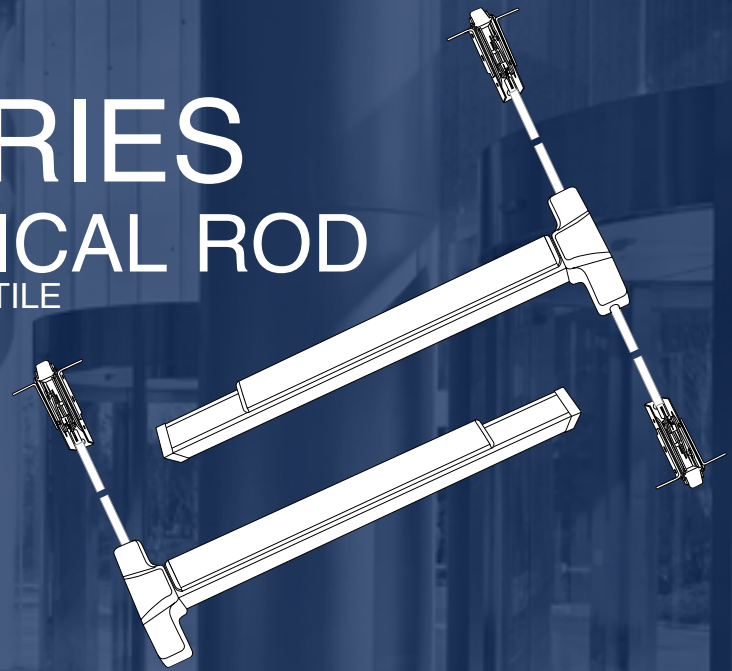
ELECTRONIC ACCESS, CONTROL OPTIONS:

- | | | |
|---|--|---|
| <ul style="list-style-type: none">• Motorized Latch Retraction• Request To Exit• Alarmed Exit/Signal Switches | <ul style="list-style-type: none">• Stand Alone Key Pad Trim | <ul style="list-style-type: none">• Motorized Locking/Unlocking Trim• Fail Secure/Fail Safe Trim |
|---|--|---|



EXIT DEVICES

6200CV SERIES CONCEALED VERTICAL ROD ARCHITECTURAL WIDE STILE



NOW AVAILABLE WITH 630 SATIN
STAINLESS STEEL ROLL FORMED
TOUCH PAD RAIL AND FILLER!!

SPECIFICATIONS



- | | |
|---------------------------------------|---|
| CHASSIS: | • Corrosion resistant plated steel |
| RAIL: | • Extruded aluminum |
| TOUCH PAD: | • Stainless steel |
| TOUCH PAD RAIL
AND FILLER: | • Extruded aluminum (standard)
• For Rolled Formed 630 Satin Stainless Steel, specify finish 630F. |
| LATCHES: | • Top Latch — Pullman with dead latching 5/8" (16mm) throw
• Bottom Latch — Pullman with 5/8" (16mm) throw, held retracted during door swing |
| BACKSET: | • 2-3/4" backset |
| PROJECTION: | • 3-1/16" (78mm) projection
• 2- 19/32" (66mm) projection when dogged |
| HAND: | • Device and trim are non-handed |
| DOGGING: | • Hex key dogging standard
• Cylinder dogging optional
• No dogging on fire listed devices |
| MINIMUM STILE WIDTH: | • 4-1/4" |
| DOOR THICKNESS: | • 1-3/4" For other door thickness applications, contact PDQ Customer Service |
| DOOR WIDTH: | • Supplied standard for 3 ft doors, "A" size devices available doors up to 4ft.
• Consult Door Width Chart to determine correct device for your applications |
| FINISHES: | • 605 – Polished Brass, 606 – Satin Brass, 613 – Oil Rubbed Bronze, 626 – Satin Chrome, 630 – Satin Stainless Steel
• Optional ‡Antimicrobial Coating available on 626 and 630 finishes only |
| FASTENERS: | • Device supplied with sex nuts, machine screws and wood screws |
| MOUNTING HEIGHT: | • Device centerline from finished floor: 40" (1016mm) |
| VERTICAL RODS: | • 1/2" (13mm) diameter tubular stock for 7' doors (default). Extension Rods available for doors up to 10'. |
| CERTIFICATIONS,
LISTINGS | • UL/ULC 305 listed for "Panic", UL10C Listed for "Fire Exit Hardware" labeled for up to 3 hours for 4'0" x 10'0"
maximum single, 8'0" x 10'0" maximum pairs |
| COMPLIANCES: | • Certified to ANSI/BHMA A156.3-2008 Grade 1
• Complies with ADA (Americans with Disabilities Act) and ICC/ANSI 117.1 for Accessible and Usable Buildings |
| WARRANTY: | • Ten (10) year limited warranty |

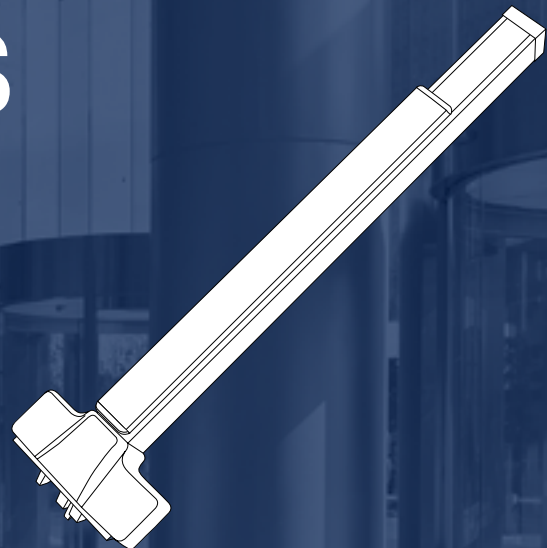


ELECTRONIC ACCESS, CONTROL OPTIONS:

- Motorized Latch Retraction
- Request To Exit
- Alarmed Exit/Signal Switches
- Motorized Locking/Unlocking Trim
- Fail Secure/Fail Safe Trim

EXIT DEVICES

6200M SERIES MORTISE ARCHITECTURAL WIDE STILE



NOW AVAILABLE WITH 630 SATIN
STAINLESS STEEL ROLL FORMED
TOUCH PAD RAIL AND FILLER!!

SPECIFICATIONS

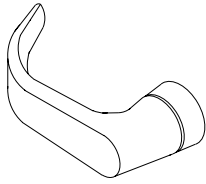


- CHASSIS:** • Corrosion resistant plated steel
- RAIL:** • Extruded aluminum
- TOUCH PAD:** • Stainless steel
- TOUCH PAD RAIL AND FILLER:** • Extruded aluminum (standard)
• For Rolled Formed 630 Satin Stainless Steel, specify finish 630F.
- STRIKE:** • ASA Type
- PROJECTION:** • 3-1/16" (78mm) projection
• 2-19/32" (66mm) projection when dogged
- HAND:** • Handed, field reversible
- DOGGING:** • Hex key dogging standard
• Cylinder dogging optional
• No dogging on fire listed devices
- MINIMUM STILE WIDTH:** • 4-1/4"
- DOOR THICKNESS:** • 1-3/4" For other door thickness applications, contact PDQ Customer Service
- DOOR WIDTH:** • Supplied standard for 3 ft doors, "A" size devices available doors up to 4ft.
• Consult Door Width Chart to determine correct device for your application
- FINISHES:** • 626 – Satin Chrome, 630 – Satin Stainless Steel
• Optional ‡Antimicrobial Coating available on 626 and 630 finishes only
- FASTENERS:** • Device supplied with sex nuts, machine screws and wood screws
- MOUNTING HEIGHT:** • Device centerline from finished floor: 40" (1016mm)
- CERTIFICATIONS, LISTINGS** • UL/ULC 305 listed for "Panic", UL10C Listed for "Fire Exit Hardware" to 3 hours for 4'0" x 8'0" maximum
- COMPLIANCES:** • On double door application only one mortise device per pair. Second door of pair secured by vertical rod device or other means
• Certified to ANSI/BHMA A156.3-2008 Grade 1
• Complies with ADA (Americans with Disabilities Act) and ICC/ANSI 117.1 for Accessible and Usable Buildings
- WARRANTY:** • Ten (10) year limited warranty
- ELECTRONIC ACCESS, CONTROL OPTIONS:** • Motorized Latch Retraction
• Request To Exit
• Alarmed Exit/Signal Switches
• Latch Bolt Monitoring

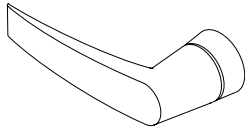


TRIM

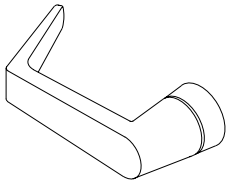
DECORATIVE LEVER COLLECTION



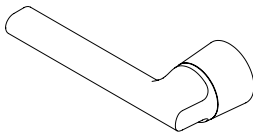
BOSTON 



MIAMI 



PHILADELPHIA 

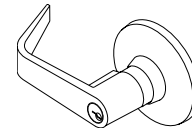


ORLANDO 

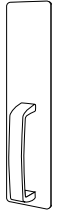
TRIM TYPES



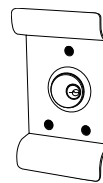
ESCUTCHEON



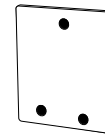
SECTIONAL



GRIP PULL



PULL



PLATE

ANSI TRIM FUNCTIONS

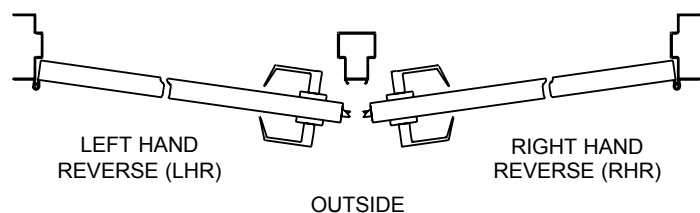
ANSI FUNCTION	DESCRIPTION
01	Exit only, no trim or blank escutcheon.
02	Entrance by trim when actuating bar is locked down (dummy trim).
03	Entrance by trim when latch bolt is retracted by key. Key removable only when locked (night latch).
04	Entrance by trim when latch bolt is retracted by key or set in retracted position by key (night latch with cylinder dogging). Requires 6201 device with cylinder dogging.
05	Entrance by thumb piece. Key locks or unlocks thumb piece (classroom thumb piece).
08	Entrance by knob or lever. Key unlocks lever (classroom lever).
09	Entrance by lever only when released by key. Key removable when locked (storeroom).
14	Entrance by trim when latch bolt is released by lever. Always active, no cylinder (passage lever).
15	Entrance by trim when latchbolt is released by thumb piece. Always active, no cylinder (passage thumb piece).

FINISHES

ANSI (US)	Description
ARCHITECTURAL	
605 (US3)	Bright Brass, Clear Coated
606 (US4)	Satin Brass, Clear Coated
613 (US10B)	Oil Rubbed Bronze, No Coating
625 (US26)	Bright Chrome Plated, No Coating
626 (US26D)	Satin Chromium Plated, No Coating
630 (US32D)	Satin Stainless Steel, No Coating (Grip Pull Trim Only)

HANDING

Out Swing Door



6 EW SERIES HEAVY DUTY EXIT DEVICE TRIM

COMPATIBLE WITH 6200R RIM, 6200V SURFACE VERTICAL ROD AND 6200CV CONCEALED VERTICAL ROD EXIT DEVICES



- Designed for high use and abuse Grade 1 applications.
- Heavy duty cast alloy escutcheon thru-bolts directly into the exit device chassis.
- No exposed set-screws or installation fasteners.

FEATURES

- Designed for use with PDQ's 6200 series. RIM, Concealed Vertical Rod and Surface Vertical Rod exit devices.
- Lever remains rigid when locked.
- Simple installation.
- Handing is field reversible.
- Lever rotation: 28 degrees.
- Designed and assembled by PDQ in Leola, PA USA.

FINISHES

- 619 Satin Nickel, 626 Satin Chrome
- PVD (Physical Vapor Deposition) finish offered standard in 605 - Bright Brass, 606 - Satin Brass and 613 - Oil Rubbed Bronze. PVD coated finishes offer outstanding resistance to wear, durability and corrosion.

CERTIFICATIONS, COMPLIANCES, LISTINGS

- ANSI/UL10C and CAN/ULC-5104 Listed for "Fire Exit Hardware" up to 3 hours for 4'0" x 8'0" maximum single, 8'0" x 8'0" maximum pairs.
- Certified to ANSI/BHMA A156.3-2008.
- Lever designs comply with ADA (Americans with Disabilities Act) and ICC/ANSI 117.1 for accessible and Usable Buildings.
- Assembled in the U.S.A. with U.S. and foreign material. Meets requirements of the Buy American Act.

CONVERSION KITS AVAILABLE FOR CHANGING FUNCTIONS IN THE FIELD.

- For changing from 08 Classroom to 09 Storeroom, order 629089.
- For changing from 09 Storeroom to 08 Classroom, order 629098.



Direct Cam Drive to Control Locking and Unlocking



Heavy duty cast alloy internal locking components

LEVER DESIGNS



BSN - BOSTON



MIA - MIAMI



PHL - PHILADELPHIA



ORL - ORLANDO

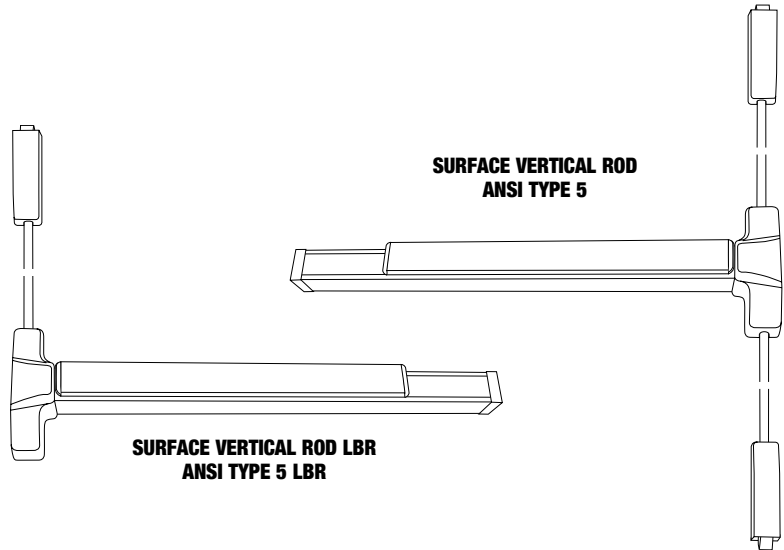
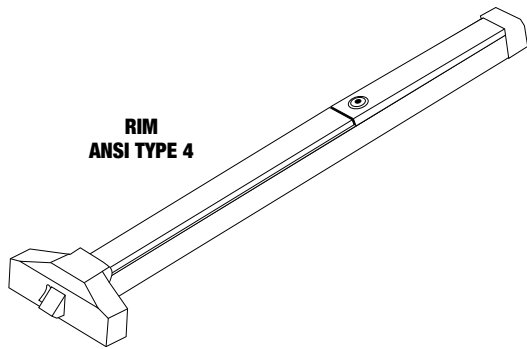


EXIT DEVICES

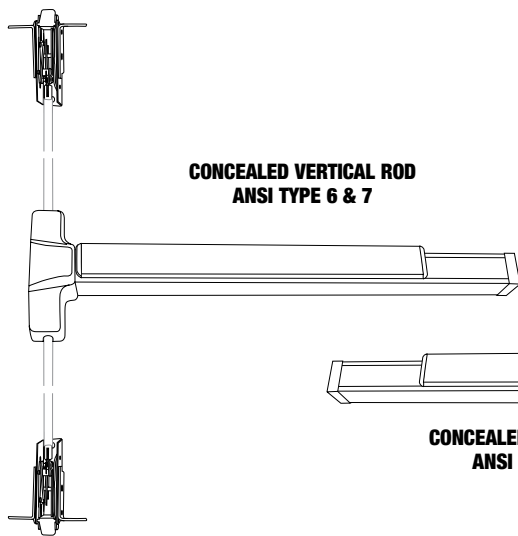
6202 SERIES

ARCHITECTURAL NARROW STILE

The PDQ 6202 Series Narrow stile Panic and Fire Rated Exit Hardware is designed for use on contemporary glass doors in public buildings, resort hotels, stores, and all types of applications where narrow stile aluminum framing is used.



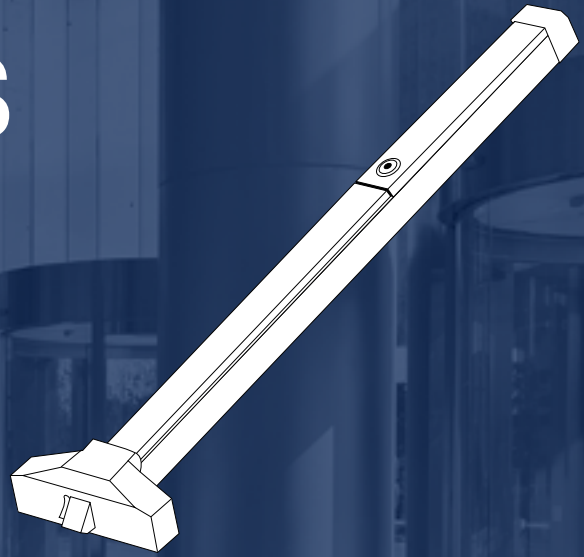
**SURFACE VERTICAL ROD LBR
ANSI TYPE 5 LBR**



**CONCEALED VERTICAL ROD LBR
ANSI TYPE 6 & 7 LBR**

EXIT DEVICES

6202R SERIES RIM ARCHITECTURAL NARROW STILE



SPECIFICATIONS



- CHASSIS:** • Corrosion resistant plated steel
- RAIL:** • Extruded aluminum
- TOUCH PAD:** • Stainless steel
- LATCH:** • Pullman with dead latching, stainless steel
 - 3/4" throw Rim
- PROJECTION:** • 3-1/8" projection
 - 2- 5/8" projection when dogged
- HAND:** • Device and trim are non-handed
- DOGGING:** • Hex key dogging standard
 - No dogging on fire listed devices
- MINIMUM STILE WIDTH:** • 2-5/8"
 - For 2" Narrow Stile applications, contact PDQ Technical Service
- DOOR THICKNESS:** • 1-3/4" For other door thickness applications, contact PDQ Customer Service
- DOOR WIDTH:** • Supplied standard for 3 ft doors. "A" size devices available doors up to 4ft.
 - Consult Door Width Chart to determine correct device for your application
- FINISHES:** • 613 – Oil Rubbed Bronze, 630 - Stainless Steel
- FASTENERS:** • Device supplied with sex nuts, machine screws and wood screws
- CERTIFICATIONS, LISTINGS** • UL/ULC 305 listed for "Panic", UL10C Listed for "Fire Exit Hardware" labeled for up to 3 hours for 4'0" x 8'0" maximum single, 8'0" x 8'0" maximum pairs
- COMPLIANCES:** • Certified to ANSI/BHMA A156.3-2008 Grade 1
 - Complies with ADA (Americans with Disabilities Act) and ICC/ANSI 117.1 for Accessible and Usable Buildings
 - Ten (10) year limited warranty
- WARRANTY:** • Ten (10) year limited warranty
- ELECTRONIC ACCESS, CONTROL OPTIONS:** • Motorized Latch Retraction • Latch Bolt Monitoring
 - Request To Exit • Alarmed Exit/Signal Switches



6202V SERIES SURFACE VERTICAL ROD

ARCHITECTURAL NARROW STILE



SPECIFICATIONS



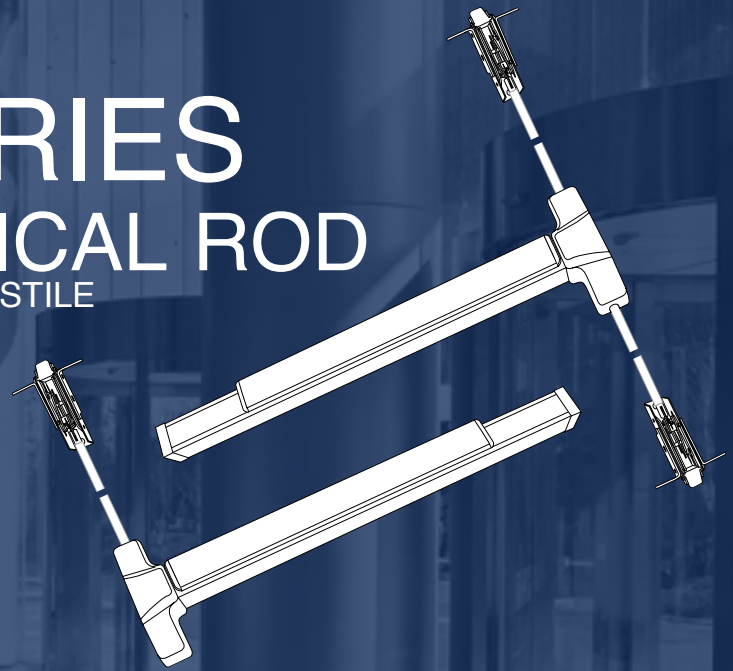
- CHASSIS:** • Corrosion resistant plated steel
- RAIL:** • Extruded aluminum
- TOUCH PAD:** • Stainless steel
- LATCHES:** • Top Latch — Pullman with dead latching 5/8" (16mm) throw
• Bottom Latch — Pullman with 5/8" (16mm) throw, held retracted during door swing
- PROJECTION:** • 3-1/8" projection
• 2- 5/8" projection when dogged
- HAND:** • Device and trim are non-handed
- DOGGING:** • Hex key dogging standard
• Cylinder dogging optional
• No dogging on fire listed devices
- MINIMUM STILE WIDTH:** • 2-5/8"
• For 2" Narrow Stile applications, contact PDQ Technical Service
- DOOR THICKNESS:** • 1-3/4" For other door thickness applications, contact PDQ Customer Service
- DOOR WIDTH:** • Supplied standard for 3 ft doors. "A" size devices available doors up to 4ft.
• Consult Door Width Chart to determine correct device for your application
- FINISHES:** • 613 – Oil Rubbed Bronze, 630 – Satin Stainless Steel
- FASTENERS:** • Device supplied with sex nuts, machine screws and wood screws
- VERTICAL RODS:** • 1/2" (13mm) diameter tubular stock for 7' doors (default). Extension Rods available for doors up to 10'.
- CERTIFICATIONS, LISTINGS** • UL/ULC 305 listed for "Panic", UL10C Listed for "Fire Exit Hardware" labeled for up to 3 hours for 4'0" x 10'0" maximum single, 8'0" x 10'0" maximum pairs
- COMPLIANCES:** • Certified to ANSI/BHMA A156.3-2001 Grade 1
• Complies with ADA (Americans with Disabilities Act) and ICC/ANSI 117.1 for Accessible and Usable Buildings
- WARRANTY:** • Ten (10) year limited warranty
- ELECTRONIC ACCESS, CONTROL OPTIONS:** • Motorized Latch Retraction
• Request To Exit • Alarmed Exit/Signal Switches



6202CV SERIES

CONCEALED VERTICAL ROD

ARCHITECTURAL NARROW STILE



SPECIFICATIONS

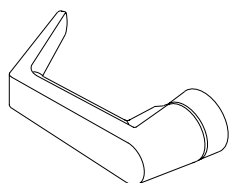


- CHASSIS:** • Corrosion resistant plated steel
- RAIL:** • Extruded aluminum
- TOUCH PAD:** • Stainless steel
- LATCHES:** • Top Latch — Pullman with dead latching 5/8" (16mm) throw
• Bottom Latch — Pullman with 5/8" (16mm) throw, held retracted during door swing
- PROJECTION:** • 3-1/8" projection
• 2- 5/8" projection when dogged
- HAND:** • Device and trim are non-handed
- DOGGING:** • Hex key dogging standard
• Cylinder dogging optional
• No dogging on fire listed devices
- MINIMUM STILE WIDTH:** • 2-5/8"
• For 2" Narrow Stile applications, contact PDQ Technical Service
- DOOR THICKNESS:** • 1-3/4" For other door thickness applications, contact PDQ Customer Service
- DOOR WIDTH:** • Supplied standard for 3 ft doors. "A" size devices available doors up to 4ft.
• Consult Door Width Chart to determine correct device for your application
- FINISHES:** • 613 – Oil Rubbed Bronze, 630 – Satin Stainless Steel
- FASTENERS:** • Device supplied with sex nuts, machine screws and wood screws
- MOUNTING HEIGHT:** • Device centerline from finished floor: 40" (1016mm)
- VERTICAL RODS:** • 1/2" (13mm) diameter tubular stock for 7' doors (default). Extension Rods available for doors up to 10'.
- CERTIFICATIONS, LISTINGS** • UL/ULC 305 listed for "Panic", UL10C Listed for "Fire Exit Hardware" labeled for up to 3 hours for 4'0" x 8'0" maximum single, 8'0" x 8'0" maximum pairs
- COMPLIANCES:** • Certified to ANSI/BHMA A156.3-2008 Grade 1
• Complies with ADA (Americans with Disabilities Act) and ICC/ANSI 117.1 for Accessible and Usable Buildings
- WARRANTY:** • Ten (10) year limited warranty
- ELECTRONIC ACCESS, CONTROL OPTIONS:** • Motorized Latch Retraction
• Request To Exit • Alarmed Exit/Signal Switches



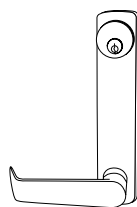
EXIT DEVICES - ARCHITECTURAL NARROW STILE TRIM OPTIONS, LEVER DESIGNS

DECORATIVE LEVER



PHILADELPHIA 

TRIM TYPES



ESCUTCHEON



GRIP PULL

FINISHES

ANSI (US)

ARCHITECTURAL

613 (US10B)

626 (US26D)

630 (US32D)

DESCRIPTION

Oil Rubbed Bronze, No Coating

Satin Chromium Plated, No Coating

Satin Stainless Steel, No Coating

(Grip Pull Trim Only)

MULLIONS

9200 SERIES

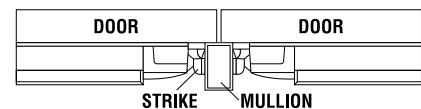
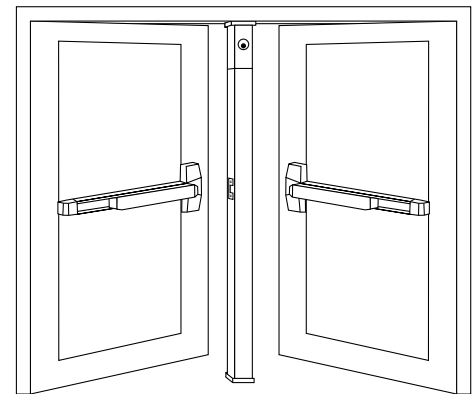
The PDQ 9000 series keyed removable mullions are designed and UL listed for use with the 6200 series Rim Exit Devices on non fire or fire rated pairs of doors. They are designed for quick removal from the top bracket by a simple operation of the rim cylinder when a clear, unobstructed large opening is required. Once the mullion is removed, carts, gurneys, large machinery and the like can freely pass through the opening. When the mullion is re-installed, the unit will self lock in place without the need for the key.



SPECIFICATIONS



- TUBE DIMENSIONS:**
- 2" W x 3" D • 1/8" wall thickness
 - 11 Gauge steel tube
- CYLINDER TYPE:**
- RIM
- SIZE:**
- 8' and 10' sizes available in Fire and Non-Fire Rated styles
- COLOR:**
- Gray Powder Coating
- CERTIFICATIONS, LISTINGS, COMPLIANCES:**
- UL UL 10B / 10C listed
 - Meets requirements of the Buy American Act
- WARRANTY:**
- One (1) year limited warranty

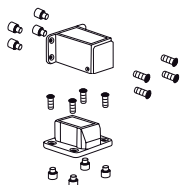


MULLIONS - KEY REMOVABLE

MODELS	DESCRIPTION
9200M-11	Mullion, 8' non-fire rated
9200MA-11	Mullion, 10' non-fire rated
9200MF-11	Mullion, 8' fire rated

Note: Fire Rated mullion can only be used with PDQ's 6200 Fire Rated Devices. Use with any other device will void UL Fire Listing.

MULLION STORAGE KIT



Includes:

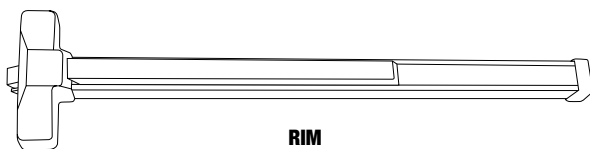
- Top mullion holder (1)
- Bottom bracket(1)
- 5/16"-18 x 1-1/2" Hex socket head machine screw (8)
- Expansion anchor (8)

EXIT DEVICES

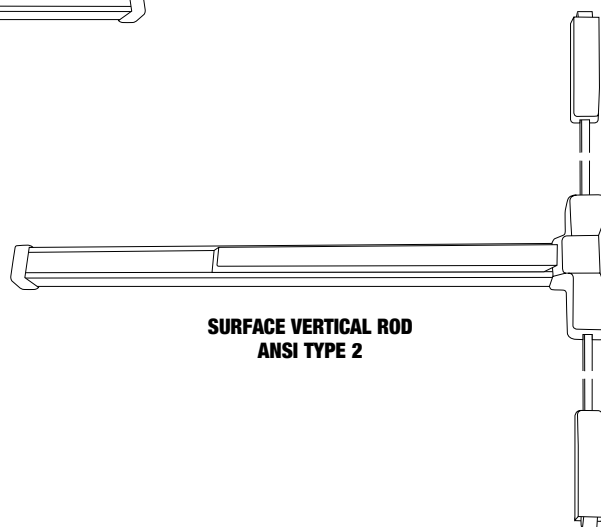
4200 SERIES

COMMERCIAL WIDE STILE

The PDQ 4200 Series offers a reliable and economical solution for compliance with life safety and fire code requirements. The 4200 is available in painted colors and architectural finishes with metal chassis cover and end cap. Function is determined by the trim selection, making the device well suited to stocking distributors. Rim and surface vertical rod applications are available to provide both security and egress.



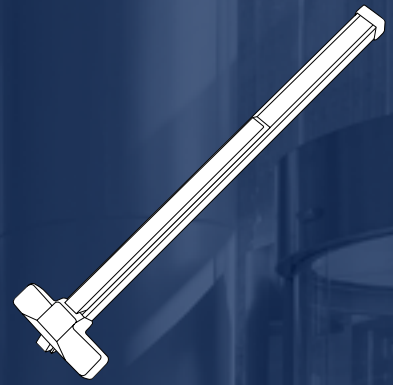
**RIM
ANSI TYPE 1**



**SURFACE VERTICAL ROD
ANSI TYPE 2**

EXIT DEVICES

4200R SERIES RIM COMMERCIAL WIDE STILE

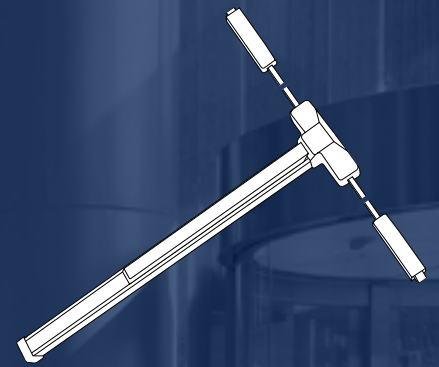


SPECIFICATIONS



- | | |
|---------------------------------|---|
| CHASSIS: | <ul style="list-style-type: none">• Corrosion resistant plated steel |
| RAIL: | <ul style="list-style-type: none">• Heavy gauge steel or stainless steel |
| TOUCH PAD: | <ul style="list-style-type: none">• Heavy gauge steel or stainless steel |
| LATCH: | <ul style="list-style-type: none">• 3/4" throw |
| BACKSET: | <ul style="list-style-type: none">• 2-3/4" backset• Supplied standard for 161 prep with door gap of 1/8" |
| PROJECTION: | <ul style="list-style-type: none">• 2-5/8" projection |
| HAND: | <ul style="list-style-type: none">• Device is non-handed |
| DOGGING: | <ul style="list-style-type: none">• Hex key dogging standard• No dogging on fire listed devices |
| MINIMUM STILE WIDTH: | <ul style="list-style-type: none">• 4-1/4" when paired with 4 EW, 4 EN, 4P and 4GW Series Trim.• 4-1/2" when paired with for 4S and 4K Series Sectional Trim. |
| DOOR THICKNESS: | <ul style="list-style-type: none">• 1-3/4" For other door thickness applications, contact PDQ Customer Service |
| DOOR WIDTH: | <ul style="list-style-type: none">• Supplied standard for 3 ft doors. "A" size devices available doors up to 4ft.• Consult Door Width Chart to determine correct device for your application |
| FINISHES: | <ul style="list-style-type: none">• 605 (US3) – Polished Brass, 626 (US26D) – Satin Chrome, 630 (US32D) – Satin Stainless Steel, 689 (US28) – Aluminum, 695 (N/A) – Duro Bronze, 696 (US4) – Gold• Optional Antimicrobial Coating available on 626 and 630 finishes only |
| FASTENERS: | <ul style="list-style-type: none">• Device supplied with machine screws and wood screws• Sex Nuts supplied with all Fire Listed devices. |
| CERTIFICATIONS, LISTINGS | <ul style="list-style-type: none">• UL/ULC 305 listed for "Panic", UL10C Listed for "Fire Exit Hardware" for doors labeled for up to 1-1/2 hour for 3'0" x 7'0" maximum single |
| COMPLIANCES: | <ul style="list-style-type: none">• Meets requirements of the Buy American Act.• Complies with ADA (Americans with Disabilities Act) and ICC/ANSI 117.1 for Accessible and Usable Buildings |
| WARRANTY: | <ul style="list-style-type: none">• Five (5) year limited warranty |

4200V SERIES SURFACE VERTICAL ROD COMMERCIAL WIDE STILE



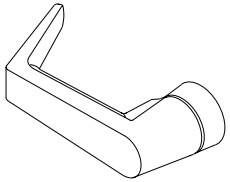
SPECIFICATIONS



- CHASSIS:** • Corrosion resistant plated steel
- RAIL:** • Heavy gauge steel or stainless steel
- TOUCH PAD:** • Heavy gauge steel or stainless steel
- LATCHES:** • Top Latch — Pullman with dead latching 5/8" (16mm) throw
• Bottom Latch — Pullman with 5/8" (16mm) throw, held retracted during door swing
- BACKSET:** • 2-3/4" backset
- PROJECTION:** • 2-5/8" projection
- HAND:** • Device is non-handed
- DOGGING:** • Hex key dogging standard
• No dogging on fire listed devices
- MAXIMUM STILE WIDTH:** • 4-1/4" when paired with 4 EW, 4 EN, 4P and 4GW Series Trim.
• 4-1/2" when paired with for 4S and 4K Series Sectional Trim.
- DOOR THICKNESS:** • 1-3/4" For other door thickness applications, contact PDQ Customer Service
- DOOR WIDTH:** • Supplied standard for 3 ft doors. "A" size devices available doors up to 4ft.
• Consult Door Width Chart to determine correct size device
- FINISHES:** • 605 (US3) — Polished Brass, 626 (US26D) — Satin Chrome, 630 (US32D) — Satin Stainless Steel, 689 (US28) — Aluminum, 695 (N/A) — Duro Bronze, 696 (US4) — Gold
• Optional Antimicrobial Coating available on 626 and 630 finishes only
- FASTENERS:** • Device supplied with machine screws and wood screws.
• Sex Nuts supplied with all Fire Listed devices.
- CERTIFICATIONS, LISTINGS:** • UL/ULC 305 listed for "Panic", UL10C Listed for "Fire Exit Hardware" for doors labeled for up to 1-1/2 hour for 3'0" x 7'0" maximum single, 6'0" x 7'0" maximum pairs
- COMPLIANCES:** • Meets requirements of the Buy American Act.
• Complies with ADA (Americans with Disabilities Act) and ICC/ANSI 117.1 for Accessible and Usable Buildings
- WARRANTY:** • Five (5) year limited warranty

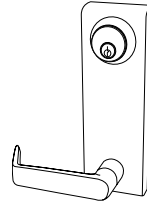
EXIT DEVICES - COMMERCIAL WIDE STILE TRIM OPTIONS, LEVER DESIGNS

DECORATIVE LEVER

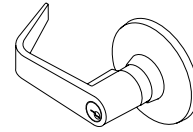


PHILADELPHIA 

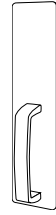
TRIM TYPES



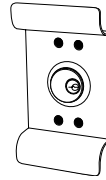
ESCUTCHEON



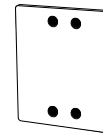
SECTIONAL



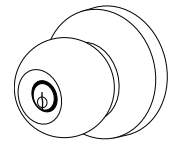
GRIP PULL



PULL



PLATE



SECTIONAL KNOB

FINISHES

ANSI (US) DESCRIPTION

ARCHITECTURAL

605 (US3) BRIGHT BRASS, CLEAR COATED

613 (US10B) OIL RUBBED BRONZE, NO COATING

626 (US26D) SATIN CHROMIUM PLATED, NO COATING

630 (US32D) SATIN STAINLESS STEEL, NO COATING

PAINTED

689 (US28) ALUMINUM

695 (NONE) DARK DURANODIC BRONZE

ARCHITECTURAL HINGES



FEATURES

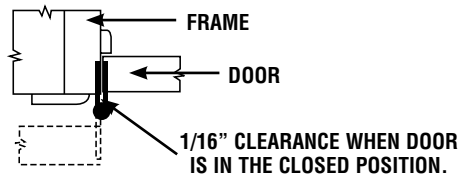
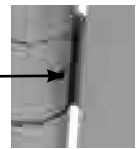


NON-REMOVABLE PIN (NRP):

- Included with all 2 and 4 ball bearing, std and heavy weight hinges.
- Groove in pin accepts set screw in center barrel.
- Set screw secured using a 3/32" hex (allen) wrench and is not accessible when door is closed.

TYPE: SWAGED:

- Full Mortise. Hinge leaves are mortised into the door and frame.
- Standard.
- Provides 1/16" of clearance between both leaves when the hinge is in the closed position.



PLAIN BEARING STANDARD WEIGHT



2 BALL BEARING STANDARD WEIGHT

SPECIFICATIONS

MATERIALS:

- STEEL — Applications: Interior doors, non-corrosive environments.
- STAINLESS STEEL—Applications: Exterior, doors, corrosive environments

PACKAGING:

- Qty of Hinges Per Individual Carton:
 - 3ea for Plain, 2 Ball Bearing and 4 Ball Bearing Hinges
 - 3ea for Spring Hinges
 - 1ea for Electrified Hinges

FASTENERS:

CERTIFICATIONS,

LISTINGS, COMPLIANCES:

- Qty of Hinges Per Master Carton:
 - 48ea for Plain, 2 Ball Bearing and 4 Ball Bearing Hinges
- Stainless steel
- Conforms with the requirements of NFPA 80-2013, Section 6.4.3.1.
- Certified to ANSI/BHMA A156.1-2006:
 - Grade 1, 4 Ball Bearing (HB) 2,500,000 cycles
 - Grade 2, 2 Ball Bearing (BB) 1,500,000 cycles
 - Grade 3, Plain Bearing (PL) 350,000 cycles

WARRANTY:

- Five (5) year limited warranty



4 BALL BEARING HEAVY WEIGHT



SPRING HINGE STANDARD WEIGHT



POWER TRANSFER STANDARD OR HEAVY WEIGHT



FLAT GOODS

FLUSH BOLTS



COORDINATORS



PLATES AND PULLS



KICKPLATES



WALL STOPS



DOOR STOPS



LATCH PROTECTORS



DOMESTOPS



OFFSET STOPS



KICKDOWN STOPS



HINGE STOPS



ROLLER STOPS



ROLLER LATCHES



DOOR VIEWERS



SILENCERS



MORTISE LOCKS



- Motor Drive Locking/Unlocking (Fail Secure/Fail Safe)
- Latch Monitoring
- Request to Exit

CYLINDRICAL LOCKS



- Electronic Locking/Unlocking (Fail Secure/Fail Safe)
- Request to Exit

EXIT DEVICES AND TRIM

WHEN IT'S BETTER TO BE SEEN AND NOT HEARD!!
SPECIFY PDQ'S MLR SERIES MOTORIZED ELECTRIC LATCH RETRACTION



- Motorized Latch Retraction And Dogging
- Alarms
- Request to Exit
- Latch Bolt Monitoring



- Motor Drive Locking/Unlocking (Fail Secure/Fail Safe)

STAND ALONE (OFFLINE) KEYPAD LOCKS



EMR SERIES BUILT AROUND MR GRADE 1 MORTISE LOCK BODY



EGT SERIES BUILT AROUND GT GRADE 1 CYLINDRICAL LOCK BODY



E629 SERIES BUILT AROUND 6EW GRADE 1 EXIT ESCUTCHEON TRIM

DESIGNED FOR USE WITH PDQ'S 6200 SERIES RIM, SVR AND CVR DEVICES.

ACCESSORIES



POWER TRANSFER HINGES

- Up to 10 wires
- Monitor available



ELECTRIC STRIKES

- 12VDC or 24VDC
- Field selectable between Fail Safe/Fail Secure
- Tested to 1,000,000 cycles



POWER SUPPLIES

- Input: 120VAC or 240VAC
- Output: 2A filtered/regulated



KEY SWITCHES

- Maintained or Momentary
- Can be keyed into master key system
- Stainless Steel Faceplate



PUSH BUTTONS

- Maintained or Momentary
- Stainless Steel Faceplate

WARRANTY

GRADE 1 LOCK PRODUCT	
MR Series Mortise Locks	Lifetime Warranty
XGT Series	Lifetime Warranty
GT Series	25-Year Warranty
SX Series	5-Year Warranty
GRADE 2 LOCK PRODUCT	
GP Series	8-Year Warranty
SD Series	5-Year Warranty
SV Series	1-Year Warranty
SW Series	1-Year Warranty
SE Series	1-Year Warranty
CL Series	2-Year Warranty
K Series	1-Year Warranty
GRADE 3 LOCK PRODUCT	
SR Series	1-Year Warranty
J SERIES DECORATIVE TUBULAR	
J Series	5-Year Warranty
CLOSERS	
3100 Series	25-Year Warranty
5100 Series	25-Year Warranty
5300 Series	25-Year Warranty
5500 Series	25-Year Warranty
7100 Series	25-Year Warranty
EXIT DEVICES	
4200 Series	5-Year Warranty
6200 Series	10-Year Warranty/1-Year Electric Components
MULLIONS	
Mullions	1-Year Warranty
HINGES AND FLAT GOODS	
Commercial Hinges	5-Year Warranty
Flat Goods	5-Year Warranty

PDQ MANUFACTURING LIMITED WARRANTY

PDQ Manufacturing ("PDQ") warrants that, during the applicable warranty period set forth in the chart to the left, its products will be free from defects in workmanship and materials under normal use and service conditions. If a product or a component part thereof is found to be defective, PDQ will, at its sole discretion, either repair or replace such defective item. If PDQ no longer manufactures the particular product or component, PDQ reserves the right to substitute an item which PDQ deems to be comparable or superior in its place.

A warranty claim must be initiated by calling PDQ's toll-free number at 800-441-9692. A brief description of the defect will be required, and further instructions for returning the product will be given. The provision of return instructions is not a guarantee that the product will be covered under this warranty.

This warranty does not cover:

- Defects or damage arising from improper installation; lack of or improper maintenance; improper storage, shipping or handling; corrosion; erosion; ordinary wear and tear; misuse or abuse; or accident.
- Products which have been modified in any way, regardless of whether such modification caused or contributed to the alleged defect.
- The protective coatings and finishes applied to the surface of the product (wear or tarnishing of such finishes is considered "ordinary wear and tear").
- Labor costs, including the costs of removing and reinstalling the product.
- Shipping charges incurred in returning the product to PDQ.
- This Limited Warranty does not apply to ANSI A156.2 Grade 2 Key-In-Lever product installed on Educational Facilities.

All products returned to PDQ will be inspected to verify that (1) the alleged defect does exist, and (2) none of the exclusionary conditions listed above (abuse, corrosion, modification, etc.) is present. Products deemed not to be "in warranty" will be returned to the customer at the customer's expense.

THIS WARRANTY IS EXCLUSIVE AND IN LIEU OF ALL OTHER WARRANTIES, EXPRESS AND IMPLIED, INCLUDING THE IMPLIED WARRANTIES OF MERCHANTABILITY AND FITNESS FOR A PARTICULAR PURPOSE.

PDQ'S MAXIMUM LIABILITY HEREUNDER IS LIMITED TO THE ORIGINAL PURCHASE PRICE OF THE PRODUCT.

PDQ SHALL NOT BE LIABLE FOR ANY INCIDENTAL, CONSEQUENTIAL, INDIRECT, SPECIAL, EXEMPLARY OR PUNITIVE DAMAGES, WHETHER BASED ON CONTRACT, WARRANTY, TORT (INCLUDING STRICT LIABILITY AND NEGLIGENCE), PATENT INFRINGEMENT OR ANY OTHER THEORY OF LIABILITY, EVEN IF ADVISED OF THE POSSIBILITY OF SUCH DAMAGES.

NO AGENT, SALES REPRESENTATIVE OR DEALER HAS THE AUTHORITY TO INCREASE OR ALTER PDQ'S OBLIGATIONS UNDER THIS WARRANTY.

FINISHES

ARCHITECTURAL



605 (US3)
Bright Brass, Clear Coated



606 (US4)
Satin Brass, Clear Coated



609 (US5)
Antique Brass, Satin
Brass, Blackened, Satin
Relieved, Clear Coated



612 (US10)
Satin Bronze, Clear
Coated



613 (US10B)
Oil Rubbed Bronze,
Oxidized Satin Bronze,
Oil Rubbed, No Coating



619 (US15)
Satin Nickel,
No Coating



625 (US26)
Bright Chromium Plated,
No Coating



626 (US26D)
Satin Chromium Plated,
No Coating



629 (US32)
Bright Stainless Steel,
No Coating



630 (US32D)
Satin Stainless Steel,
No Coating

PAINTED



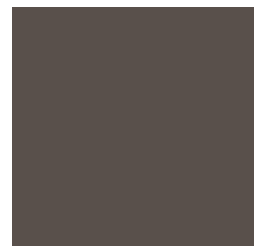
689 (US28)
Aluminum



690 (US20)
Dark Statuary Bronze



691 (US21)
Light Bronze



695 (N/A)
Dark Duranodic Bronze



696 (US4)
Satin Brass (Gold)

Finishes shown are representative only. PDQ cannot guarantee that product shipped will match finishes shown.
Not all products are available in all finishes listed.

ABOUT THE ABILITYONE PROGRAM

FAR 52.208-9 Contractor Use of Mandatory Sources of Supply requires the products listed herein assigned National Stock Numbers (NSN's) as included in the AbilityOne Procurement List be specified and procured on all federally funded projects or federally operated facilities. No substitutions permitted.

LAWS, REGULATIONS AND POLICY

AbilityOne HISTORY



AbilityOne PROGRAM STRUCTURE



AbilityOne PROGRAM REGULATIONS

- **Javits-Wagner-O'Day Act (JWOD)** — 41 U.S.C. 46-48c
- **Code of Federal Regulations** — FAR 52.208-9 Contractor Use of Mandatory Sources of Supply or Services
- **48 CFR Part 8.002 (a)(1)(iv) "top priority source"** — Establishes descending order of priority that Federal Government shall use to satisfy requirements for supplies and services from or through sources and publications
 - Door hardware products including mortise locks, cylindrical locks, door closers, exit devices and stand-alone keypad locks, co-branded PDQ/SKILCRAFT, listed on the AbilityOne Procurement List, assigned National Stock Numbers have been approved by the U.S AbilityOne Commission. Ref: "Federal Register Procurement List Additions. A Notice by the Committee for Purchase From People Who Are Blind or Severely disabled on 2/5/2016".

SUPPLIES

- Agency inventory
- Other agency excess
- Federal Prison Industries
- AbilityOne Procurement List
- Wholesale supply sources
- Mandatory Federal Supply Schedules
- Optional Federal Supply Schedules
- Commercial sources

SERVICES

- AbilityOne Procurement List
- Mandatory Federal Supply Schedules
- Optional Federal Supply Schedules
- Federal Prison Industry and Commercial sources

For more information, contact Cheryl Colella-Gehrke, PDQ's Director of Business Development. Email: cherylgehrke@pdqlocks.com or 717-656-5344.



Headquarters: 2754 Creek Hill Road • Leola, PA 17540 • 800.441.9692 • 717.656.6892 Fax
 Regional Distribution Centers: Kansas City, MO, Salt Lake City, UT, Seattle, WA
www.pdqlocks.com

PDQ'S Evolution Brochure is printed on Forest Stewardship Council™ certified paper. FSC® Certification ensures that the paper used in this catalog contains fiber from well-managed and responsibly harvested forests that meet strict environmental and socioeconomic standards. We're proud to be one of the first hardware manufacturers in the country to make this significant move to help our environment. The FSC logo on our brochure signals not only FSC Certification, but also PDQ's commitment to improving the environment.

