

RADIANANT

ELECTRIC HEAT

545B BASEBOARD

1624CL LAY-IN CEILING PANEL

945C COVE

Radiant Electric Heat makes its CeramiCircuit™ element with a high purity 99.8% aluminum oxide (alumina) ceramic. The element's high density, diamond like hardness, stability at high temperature, low thermal expansion, dielectric strength, corrosion resistance, stiffness to weight ratio, fine grain structure, and biocompatibility, make REH's panel the ideal heating choice for residential, commercial and industrial applications. Once our element quickly heats a room to a desired temperature, our heater cycles off. Despite using no power, the element maintains a high surface area temperature. This equals substantially lower heating cost.

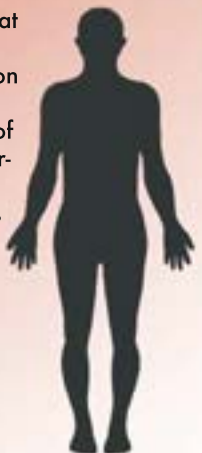


HOW IT WORKS



CeramiCircuit™ Radiant Electric Heaters provide rapid response comfort in as little as 5 minutes. The combination of our exclusive element and excellent design provides for maximum output of infrared energy. This assures maximum comfort at minimum operating expense. The room and everything in it are evenly warmed by this heat energy.

Every object absorbs, re-radiates and reflects the heat in all directions, creating unparalleled comfort and even temperatures throughout the space. Stratification is not an issue as it is with all convective HVAC systems. Comfort is also maximized by the elimination of air movement. A Ten Year Non-prorated Limited Warranty, an operational life measured in decades, and no service requirements, all mean additional savings and quicker return on your investment.



Infrared Radiant
Heat is Green



ceramicircuit

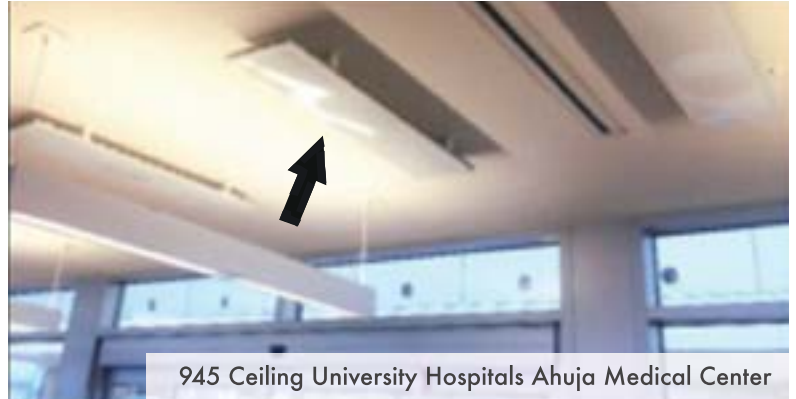
COVE & SURFACE MOUNT CEILING HEATERS

High Efficiency Ceramic Infrared Panels

Standard colors are Beige or White. Matching mounting brackets are included. Stainless steel, custom colors and logo imprinting are available by special order for an additional charge.



945 Cove TJC & Associates Environmental Engineering

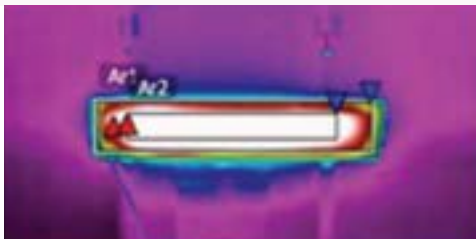


945 Ceiling University Hospitals Ahuja Medical Center

MODEL	DIMENSIONS	WATTS	BTU'S	SHIP WT.
632C 120 volt/4.8 amps 208 volt/2.9 amps 240 volt/3.4 amps 277 volt/2.3 amps	33" L x 7" H x 5.5" D	585	1989	11lbs
645C 120 volt/6.8 amps 208 volt/3.9 amps 240 volt/3.4 amps 277 volt/2.9 amps	46" L x 7" H x 5.5" D	825	2817	15lbs
945C & 945CL 120 volt/8.3 amps 208 volt/4.8 amps 240 volt/4.2 amps 277 volt/3.6 amps	46" L x 10" H x 7.5" D	1000	3414	20lbs
1445C & 1445CL 120 volt/12.5 amps 208 volt/7.2 amps 240 volt/6.2 amps 277 volt/5.4 amps	46" L x 15" H x 10" D	1500	5150	28lbs

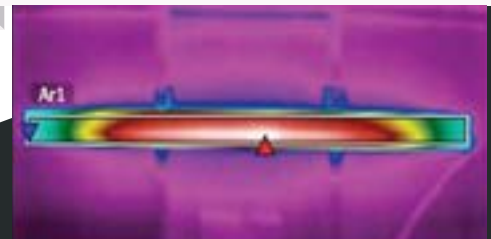
CERAMICIRCUIT VS COMPETING COVE HEATER

CERAMICIRCUIT



Our proprietary 585 Watt CeramiCircuit heating element embedded in a porcelain coated carbon steel emitter covered by a 10-year warranty. Average surface temperature of 312.4 °F, 4.2% larger emitting surface and 2.5% lower electrical draw results in a 52% efficiency advantage for our CeramiCircuit Radiant Heater.

COMPETITOR



Other manufacturers 600 Watt Calrod heating element enclosed in an extruded aluminum emitter with only a 1-year warranty. Average surface temperature of 219.2 °F.



ceramicircuit

1624CL LAY-IN CEILING HEATER

High Efficiency Ceramic Infrared Panels



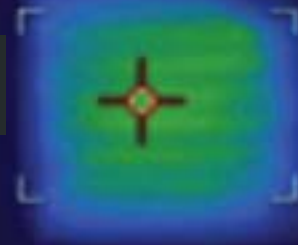
The thermal images to the right illustrate the nearly 200 degrees higher surface temperature of the 1624CL versus the competitions. Due to the ability of the CeramiCircuit™ element to store thermal energy in its core and release it after the unit has powered down, the 1624CL actually gives off as much heat energy in the 10 minutes after it is turned off as the competing unit projects into the space in 10 minutes while fully charged. These unique abilities lead to quicker recovery of comfort set points and lower cost of operation.

- For installation in T-Bar suspended ceilings
- 10 Year Limited Warranty
- Reaches full heating potential in 5 to 7 minutes
- Perfect for complete building or spot heating applications
- Ideal solution to perimeter heat loss, downdrafts over glass & isolated cold spots that are common in all structures
- Works well in offices, reception areas, schools, medical and clean rooms, assisted living, athletic facilities, hot yoga, pools, enclosed shelters
- Save 30-70% over Gas, LP, Oil or other electric systems

MODEL	DIMENSIONS	WATTS	BTU'S	SHIP WT.
1624CL	^L 23.75" x ^W 23.75" x ^H 2.75"	625	2134	20lbs
	120 volt/5.2 amp 240 volt/2.6 amp		208 volt/3.0 amp 277 volt/2.3 amp	

241 °F

Maximum Temperature
Other MFG.



425 °F

Maximum Temperature
REH 1624 CL



- ♦ For supply connections, use wire suitable for at least 90°C.
- ♦ For T-Bar installations, the plenum height must be minimum 6 inches.
- ♦ Minimum spacing of 24 inches from adjacent walls and other heaters.
- ♦ Minimum spacing of 6 inches from sprinkler heads or any heat sensing.



BASEBOARD MOUNT HEATERS

High Efficiency Ceramic Infrared Panels

- ◆ Flush mounted on wall at least 0.75 inches from finished floor.
- ◆ 10 year limited warranty.
- ◆ Reaches full heating potential in 5 to 7 minutes.
- ◆ Cost effective replacement for old convective baseboard heaters.
- ◆ Safe, non-flammable, non-combustible rating.
- ◆ Works well under reception desks and work stations near entryways.

MODEL	DIMENSIONS			WATTS	BTU'S	SHIP WT.
	L	H	D			
527B	30.87"	6.75"	3.125"	400	1366	14lbs
	120 volt/3.3 amp	208 volt/1.9 amp	240 volt/1.7 amps	277 volt/1.4 amps		
545B	48"	6.75"	3.125"	650	2217	20lbs
	120 volt/5.4 amp	208 volt/3.2 amp	240 volt/2.7 amps	277 volt/2.3 amps		



PORTABLE INFARED PLUG-IN HEATERS

High Efficiency Ceramic Infrared Panels

- Stainless Steel model is DME Certified
- Non-allergenic, perfect for chemically sensitive or people with acute allergy or sinus conditions
- Built-in thermostat for accurate control of your comfort
- Internal tip-over switch for your safety
- Silent - Clean - Odorless - Economical - Reliable

MODEL	DIMENSIONS			WATTS	BTU'S	SHIP WT.
	L	H	D			
1624P-SS	26"	21"	4"	1000	3414	37lbs
1624P-Black	26"	21"	4"	1000	3414	37lbs
	120 volt/8.3 amp					



Please see our website www.electriceat.com for information on our 10 year warranty, specifications and submittals, available thermostats and a variety of other product information. For immediate help with questions, pricing, and availability please call 800-774-4450 or email sales@electriceat.com