

BUILDINGS WE SERVICE

- Residential/ Multi-Unit Residential
- Commercial and Industrial
- Historical Buildings
- HOA Condominiums
- Mobile Home Parks
- Hi-Rise Buildings
- Municipalities
- Universities & Schools
- Retirement & Nursing Homes
- And more...

Establish a relationship with Specialized Pipe Technologies and see what's really going on in your system.



SPECIALIZED
PIPE TECHNOLOGIES

Call us today: 800-849-4610

5119 Pegasus Court, Suite R
Frederick, MD 21704

LIC. #64128

sptplumbing.com



Specialized Pipe Technologies (SPT) has over 20 years of experience maintaining and repairing faulty pipe systems from potable, to sewer to storm drains.

SPT has completed work on a national level with federal government buildings, NASA, industrial facilities such as Coca Cola, Brookdale Senior Living and the United States Navy.

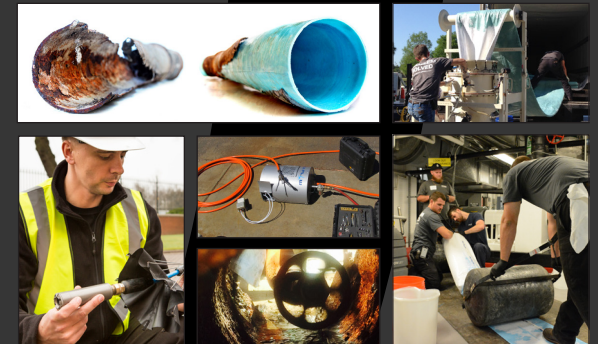
SPT offers pipe maintenance services with environmentally safe cleaning technologies and patented trenchless rehabilitation technologies.

Our customers know they can count on the advice and service they receive from SPT.

Don't speculate... Investigate what is wrong with your pipe system today!



SPECIALIZED
PIPE TECHNOLOGIES



**ALL-SERVICE PIPE MAINTENANCE
& REPAIR PROVIDER**

#PROBLEM SOLVED

INVESTIGATE



Investigate your pipe systems by utilizing video camera inspection services. The value of having your pipe systems investigated is pivotal to solving pipe leaks, sewer odor issues and drain line backups.



PIPE CLEANING

Preventative pipe cleaning is critical in maintaining a healthy and functioning pipe system. We utilize diverse cleaning technologies to prepare pipe systems for better flow or potential rehabilitation.

- Cast Iron or Steel Pipes
- Plastic ABS Pipes
- Poly Vinyl Chloride (PVC) Pipes
- Copper Pipes
- Orangeburg Pipes
- Asbestos Concrete Pipes
- Clay Pipes
- And more...!



REHABILITATE

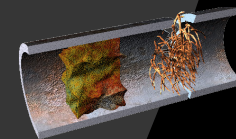
Cracked pipes? Roots? Looking for a no-dig non-intrusive solution to a pipe system problem? Rehabilitate your pressurized or non-pressurized pipes with CIPP lining or epoxy barrier coatings.



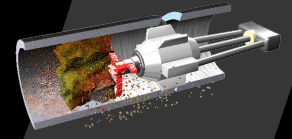
25 Years of Scaling and Clogging

A Cleaned Cast Iron Pipe

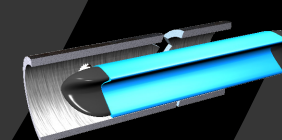
CIPP (Cured-in-Place-Pipe)



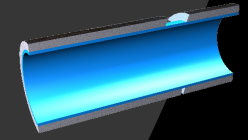
First, an SPT camera reveals a blocked, breached and/or root intruded pipe.



Then, a cutting tool cleans the pipe.



Next, an epoxy saturated liner is pulled into place and the internal bladder is inflated.



Finally, after curing the bladder is removed leaving behind a structural "pipe within a pipe."