



TEMPAIR[®]
RENTAL SERVICES

HEATING
COOLING
DEHUMIDIFYING
AIR FILTRATION

EST. 1965



HVAC RENTAL SERVICES

Since 1965, TEMP-AIR has been America's leading provider of temporary, portable heating, cooling, dehumidifying, and air filtration rental services to the U.S. construction industry. Listed in *Rental Equipment Register's* top 100 rental companies, TEMP-AIR can offer a solution for every application whether it is construction, industrial, commercial, or institutional – planned or emergency.

TEMP-AIR provides custom air management solutions with a wide variety of equipment types and sizes. Our 14 locations throughout the U.S. offer emergency service 24/7/365 – nationwide.



What's Included in Your Rental Service	2
Make-Up Air	3
Direct-Fired Make-Up Air Heaters	4-5
Indirect-Fired Heaters	6-7
Electric Heaters	8
Steam/Hot Water Heaters	9
Hydronic Heaters	10
Ground Thawing Equipment	11
Direct-Fired Construction Heaters	12
Infrared Heaters	13
Heating/Cooling Accessories	14
Fans	15
Evaporative Coolers	16
1-5 Ton Water-Cooled Portable Air Conditioners	17
1-10 Ton Air-Cooled Portable Air Conditioners	18-19
3-75 Ton Industrial Air Conditioners	20-21
Air Handlers	22
Chillers	23
Dehumidifiers	24-25
Air Filtration	26
LEED®	27
Contact Us	28

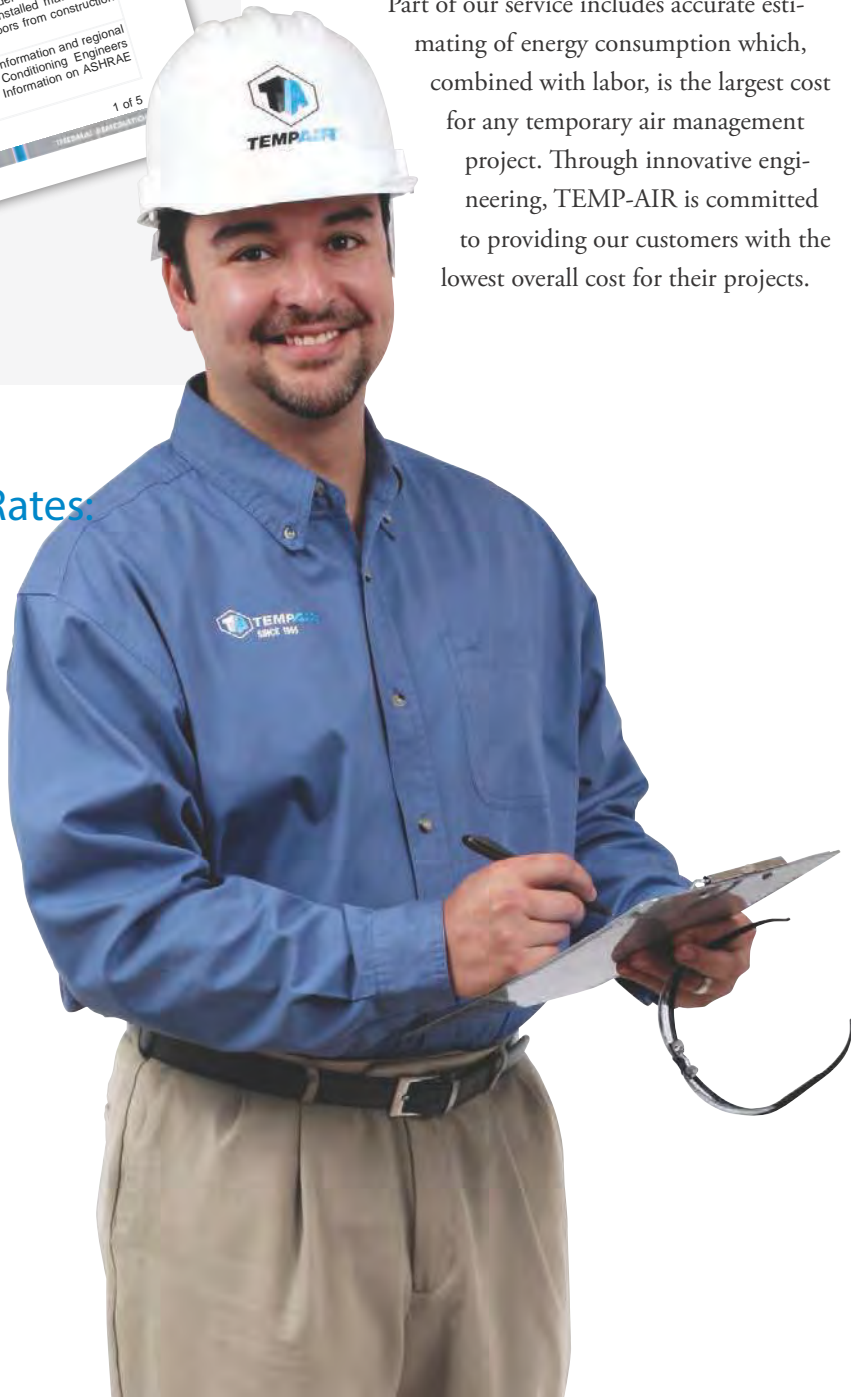
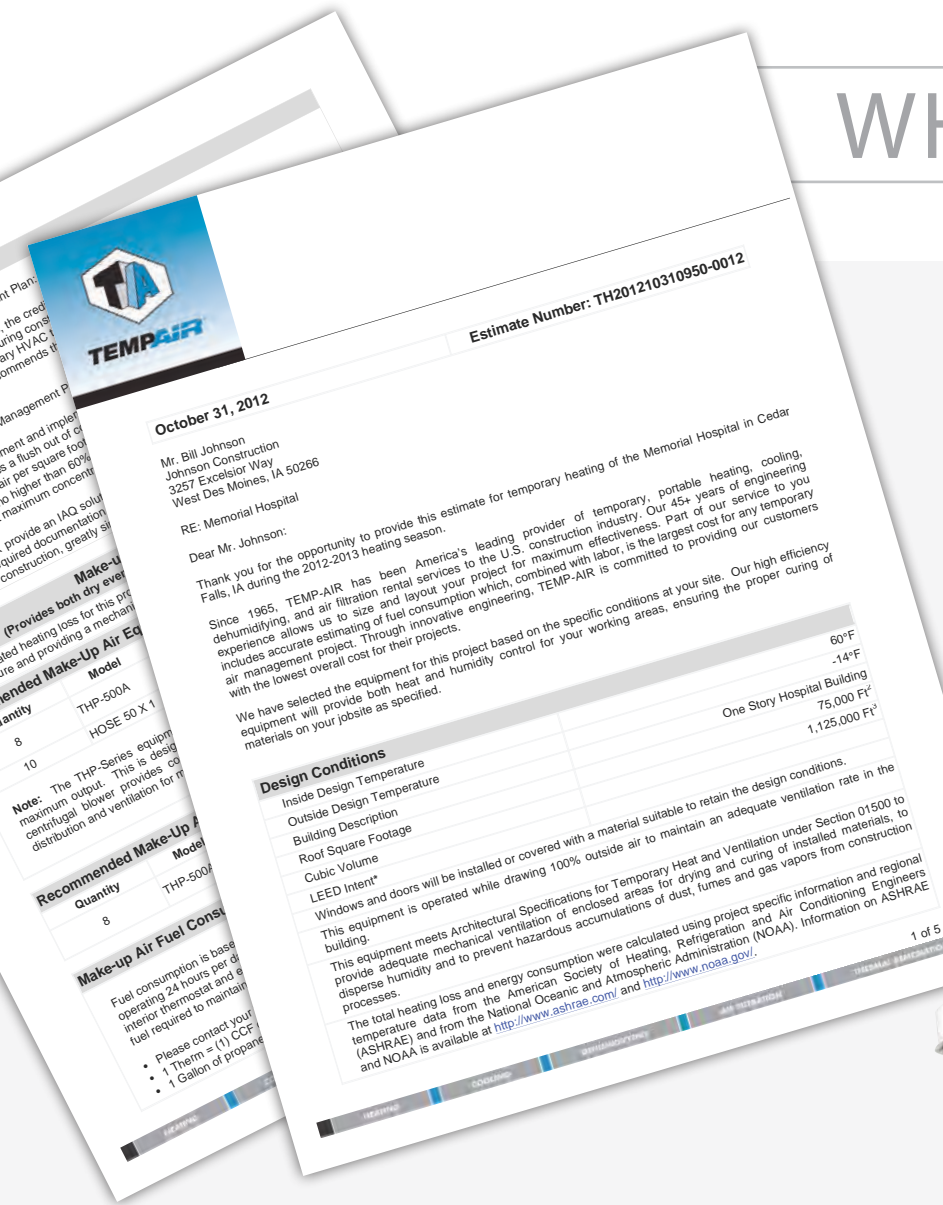
WHAT'S INCLUDED

In Your Rental Service?

At TEMP-AIR we won't just rent you a heater and leave you out in the cold. Whether your need is construction, special event, or emergency service related, TEMP-AIR will give you personalized, customized solutions to control your environment.

Our air management systems are designed not only for temperature control, but to also manage moisture and ventilate toxic fumes. For each project, we calculate the heat loss, potential humidity levels and ventilation requirements in order to design a "system" for your unique air management needs.

Part of our service includes accurate estimating of energy consumption which, combined with labor, is the largest cost for any temporary air management project. Through innovative engineering, TEMP-AIR is committed to providing our customers with the lowest overall cost for their projects.



Services Included in our Rental Rates:

- Estimate and design of the temporary air management system
- Initial start up assistance
- On-site personnel training
- Routine site inspections and preventative maintenance
- 24-hour emergency service, 7 days a week.

Applications:

- New construction or retrofits
- Emergency or planned shut downs
- Military and disaster relief
- Special events

MAKE-UP AIR

What Is Make-Up Air?

Make-up air is air from the outdoors that is heated and then evenly distributed indoors in a controlled manner to replace air that is being exhausted. This drier, tempered, fresh air has the ability to absorb the moisture, and ventilate the fumes from the construction process. It provides lower relative humidity levels and dew point temperatures inside the building to prevent condensation and minimize the potential for mold.

Why Use Make-Up Air?

All buildings infiltrate, or “breathe”. This naturally occurring air movement happens when there is a temperature difference between the inside and the outside. Because buildings breathe, and because there are air contaminants (paint, adhesives, exhaust gases, etc.) and moisture during construction that need to be diluted/exhausted, it is desirable to mechanically control the process through the heater. TEMP-AIR’S make-up air heaters allow the introduction of controlled amounts of fresh, tempered air from the outside. A recirculating heater only attempts to control the temperature issue. It adds moisture from the combustion process, and relies on uncontrolled infiltration to ventilate.

Make-Up Air Heaters Provide:

- Controlled mechanical ventilation
- Lower dew point temperatures
- Reduced hot and cold spots
- More uniform interior and surface temperatures

Ordinary Recirculating Heaters:

- Intensify uncontrolled infiltration
- Recycle stale, dirty air
- Increase hot and cold spots
- Increase moisture and contaminant levels



THP-500

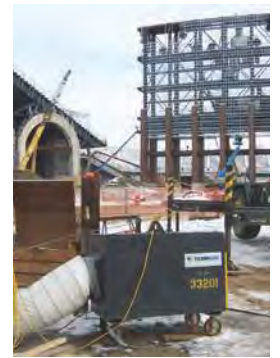


IDEAL FOR:

Direct-fired make-up air heaters work well in most types of construction applications, helping to control moisture and air contaminants. These heaters operate like a permanent air handler, providing evenly distributed, warm, dry air. Installed either inside or outside, THP-Series heaters draw 100% fresh air through the unit's intake and discharge tempered air controlled by a remote thermostat.

FEATURES:

- Electronic modulating burner controls and remote space thermostats automatically adjust gas flow, saving money on fuel costs
- A centrifugal blower provides large volumes of air and high static pressures allowing the equipment to work well with ductwork when needed



PRODUCT SPECIFICATIONS									
MODEL	BTU/HR (MIN)	BTU/HR (MAX)	CFM	NATURAL GAS	PROPANE	POWER SUPPLY (V/PH/HZ/A)	DIMENSIONS LxWxH (IN)	WEIGHT (LBS)	BASE
THP-85	-	85,000	450	1/2" NPT	1/2" NPT	115/1/60/15	30x16x22	122	CASTERS
THP-175	-	175,000	1,200	1/2" NPT	1/2" NPT	115/1/60/15	31x18x31	193	CASTERS
THP-300	30,780	300,000	1,900	1" NPT	1/2" NPT	115/1/60/20	46x28x53	372	CASTERS
THP-400	80,000	400,000	2,400	1" NPT	1/2" NPT	115/1/60/20	50x26x48	450	CASTERS
THP-500	40,300	500,000	2,800	1" NPT	1/2" NPT	115/1/60/20	59x26x65	560	CASTERS
THP-500A	44,500	500,000	3,000	1" NPT	1/2" NPT	115/1/60/20	56x28x53	596	CASTERS
THP-550	40,500	550,000	3,000	1" NPT	1/2" NPT	115/1/60/20	60x31x66	500	CASTERS
THP-750	43,200	750,000	4,000	1" NPT	1/2" NPT	230/1/60/15 230/3/60/10 460/3/60/5	68x33x65	757	CASTERS
THP-1000	48,600	1,000,000	6,000	1" NPT	1" NPT	230/1/60/25 230/3/60/15 460/3/60/10	76x35x69	939	CASTERS
THP-1100	48,600	1,100,000	6,000	1" NPT	1" NPT	230/1/60/25 230/3/60/15 460/3/60/10	80x36x71	889	CASTERS
THP-1400	60,750	1,400,000	7,600	1 1/4" NPT	1" NPT	230/1/60/25 230/3/60/15 460/3/60/10	87x35x51	1,197	CASTERS
THP-2000	89,100	2,000,000	11,000	1 1/4" NPT	1" NPT	230/1/60/35 230/3/60/20 460/3/60/10	106x46x46	1,607	SKID
THP-3000	133,650	3,000,000	16,500	1 1/2" NPT	1" NPT	230/3/60/30 460/3/60/15	123x58x64	2,633	SKID
THP-4000	170,000	4,000,000	21,000	2" NPT	1" NPT	230/3/60/40 460/3/60/20	134x60x73	2,700	SKID
THP-4500	202,500	4,500,000	24,500	2" NPT	1" NPT	230/3/60/60 460/3/60/30	125x68x66	3,192	SKID



IDF-800



IDEAL FOR:

Indirect Fired Heaters are typically installed outside with heated air ducted to the indoors. Most similar to a home furnace, outside air is forced through a heat exchanger while the products of combustion are diverted out a chimney. Because the products of combustion never come into contact with the air going into the space, IDF-Series heaters are ideal for “clean-room” type projects.

FEATURES:

- Multiple fuel options are available
- Thermostatically controlled for fuel efficiency
- Stainless steel combustion chamber keeps combustion air separate from discharge air
- Smaller models are available on wheels for portability



PRODUCT SPECIFICATIONS	IDF-400 (GAS-OIL)	IDFG-500 (GAS)	IDFO-600 (OIL)	IDF-750 (GAS)	IDF-800 (GAS)
BTU INPUT	395,000	450,000	505,000	700,000	800,000
BTU OUTPUT	320,000	360,000	400,000	631,000	640,000
CFM	2,500	2,800	3,100	5,000	6,000
FUEL USAGE (AT FULL LOAD)	4.32 GPH PROPANE 395 CFH NATURAL 2.84 GPH OIL	4.92 GPH PROPANE 450 CFH NATURAL	3.63 GPH	7.65 GPH PROPANE 700 CFH NATURAL	8.74 GPH PROPANE 800 CFH NATURAL
FUEL SUPPLY	10 PSI PROPANE 1/2-4 PSI NATURAL 42 GAL OIL	10 PSI PROPANE 1/2-4 PSI NATURAL	42 GAL	10 PSI PROPANE 1/2-4 PSI NATURAL	10 PSI PROPANE 1/2-4 PSI NATURAL
CONNECTION	1" NPT	1" NPT	-	1" NPT	1" NPT
POWER SUPPLY (V/PH/Hz/A)	115/1/60/15	115/1/60/20	115/1/60/15	208-230/3/60/20	208-230/1/60/30 208-230/3/60/20 460/3/60/10
DIMENSIONS, LxWxH (INCHES)	70x24x52	70x35x52	70x35x50	111x40x67	144x36x74
WEIGHT (LBS)	450	467	467	1,000	2,700

IDEAL FOR:

Mobile Indirect Fired Heaters are perfect for remote locations where external power is not available and a turnkey heating solution is required. These all-in-one mobile heaters are ready to tow-n-go to the jobsite. Ideal for oil wells, wind towers, bridge construction or repair, temporary facilities, tents, and structural drying (flood and water restoration).

FEATURES:

- Self-contained units built on heavy-duty trailer platforms to pull anywhere – anytime
- Large capacity on-board fuel tanks
- Automated controls with exterior lights indicate proper system power/fuel operation
- On-board storage for ducting



Indirect-Fired Heaters (Mobile)



PRODUCT SPECIFICATIONS	MIDFO-800	MIDFO-1100
FUEL TYPE	DIESEL	DIESEL
HEAT CAPACITY	(1) 800,000 BTU/HR Indirect Fired Fuel Oil Heater	(2) 400,000 BTU/HR IndirectFiredFuelOilHeaters
RUN TIME	28 HOURS	28 HOURS
FUEL USAGE (AT FULL LOAD)	5.76 GPH	5.76 GPH
ON-BOARD FUEL TANK CAPACITY	200 GALLONS	180 GALLONS
ON-BOARD GENERATOR	10 KW	10 KW
AIR DELIVERY	4,000 CFM 4.5"W.C. ESP	(2) 5,500 CFM 11,000 Total Capacity
AIR DISTRIBUTION	(2) 16" COLLARS Ductable Up To 100 Ft.	(2) 20" COLLARS Ductable Up To 100 Ft.
DIMENSIONS, LxWxH (INCHES)	201x81x108	208x96x84
WEIGHT (LBS)	5,600 (W/O FUEL) 7,000 (FULL FUEL)	5,500 (W/O FUEL) 6,800 (FULL FUEL)



ETHP-150



IDEAL FOR:

Electric heaters are ideal for jobsites where no gas is available or where flameless operations are required. Because they do not produce combustion emissions, ETHP-Series heaters can work well in confined spaces. Electric heat requires accessibility to high voltage and high amperage power.

FEATURES:

- Digital temperature controls provide precise measurement of space and discharge temperatures
- Proof-of-air-flow senses obstructed air intake and prevents coil from energizing
- Built-in circuit breaker
- Remote thermostat automatically adjusts temperature output



PRODUCT SPECIFICATIONS

MODEL	POWER SUPPLY (V/PH/Hz/A)	CFM	OUTPUT KW/HR - BTU/HR	MAX ESP* (IN)	DIMENSIONS LxWxH (IN)	WEIGHT (LBS)	BASE
ETHP-10	230/1/60/45	1,070	10 - 34, 120		24x23x34	65	WHEELS
ETHP-15-2	230/3/60/40	1,070	15 - 51, 180		23x28x34	65	WHEELS
ETHP-15-4	460/3/60/20	1,070	15 - 51, 180		23x28x34	65	WHEELS
ETHP-20	460/3/60/30	1,070	20 - 68, 240		23x28x34	75	WHEELS
ETHP-30	460/3/60/40	1,070	30 - 102, 360		23x28x34	75	WHEELS
ETHP-60	460/3/60/75	1,100-2,700	60 - 204, 720		44x30x39	170	CASTERS
ETHP-100	460/3/60/150	2,100	100 - 341, 200		59x26x49	624	CASTERS
ETAH-150	460/3/60/200	5,000	148 - 504, 976	2.75" W.C.	66x34x76	1,550	CASTERS
ETHP-150	460/3/60/200	4,000	150 - 511, 800		69x32x65	1,152	CASTERS
ETHP-150HS	460/3/60/200	1,600-3,300	150 - 511, 800	6" W.C.	73x32x47	1,174	CASTERS

*ESP = External Static Pressure in inches water column

IDEAL FOR:

Steam or hot water heaters can be used in structures where there is already a central steam or hot water boiler onsite. These portable air handlers, when combined with steam or hot water, will provide dry, even heat. These units are ideal for construction sites, industrial or institutional buildings, municipal plants, and processing applications.

FEATURES:

- Centrifugal blowers deliver high air volumes for potential use with ductwork
- Remote thermostat control
- Fused disconnects for power connections



STHP-500

Steam/Hot Water Heaters



PRODUCT SPECIFICATIONS	STHP-500	STHP-1000	STHP-2000	STHP-4000	TAH-20	TAH-100	TAH-150
CFM	3,500	6,000	11,000	22,000	3,500	20,000	30,000
POWER SUPPLY (V/PH/HZ/A)	230/1/60/15 230/3/60/10 460/3/60/5	230/1/60/35 230/3/60/20 460/3/60/10	230/3/60/30 460/3/60/15	208/3/60/60 230/3/60/60 460/3/60/30	230/1/60/15 230/3/60/10 460/3/60/5	208/3/60/80 230/3/60/70 460/3/60/35	208/3/60/100 230/3/60/90 460/3/60/45
DIMENSIONS, LxWxH (INCHES)	63x34x76	104x46x50	140x46x50	147x93x75	63x34x76	120x100x83	166x100x102
WEIGHT (LBS)	1,375	1,565	2,100	2,550	1,375	5,165	7,900
BASE	WHEEL	SKID	SKID	SKID	WHEEL	SKID	SKID
CONNECTIONS	2" NPT	2.5" NPT	2.5" NPT	2.5" NPT	2" NPT	4"-150 LB FLANGE	4"-150 LB FLANGE
PRESSURE RANGE (LBS)	15-150	15-150	15-150	15-150	15-150	10-150	10-150
MAX STEAM TEMP.	366° F	366° F	366° F	366° F	WATER ONLY	WATER ONLY	WATER ONLY

HAH-1000



IDEAL FOR:

Hydronic heaters are ideal for heating enclosed structures or for jobsites that require flameless operations. A central heating module located outside heats a fluid then pumps it through hoses to liquid-to-air heat exchangers, which can be placed throughout the structure. The heat exchangers then heat, circulate, and reheat interior structure air. Heat transfer hose can also be used to thaw ground or cure slabs and footings.

FEATURES:

- Flameless operation means no products of combustion are introduced into the space
- Multipurpose units can be used to heat, dry, thaw, or cure



PRODUCT SPECIFICATIONS	HAH-250	HAH-1000	HAH-1200
FUEL TYPES	NATURAL GAS PROPANE	NATURAL GAS PROPANE	NATURAL GAS PROPANE
BTU/HR INPUT	248,000	860,000	1,233,000
BTU/HR OUTPUT	199,000	714,000	1,023,390
AIR DELIVERY	(3) 1,000 CFM HYDRONIC HEAT EXCHANGERS	(4) 2,400 CFM HYDRONIC HEAT EXCHANGERS	(5) 2,300 CFM HYDRONIC HEAT EXCHANGERS (SHIPPED SEPARATELY)
FUEL USAGE (AT FULL LOAD)	248 CFH NATURAL 2.71 GPH PROPANE	860 CFH NATURAL 9.4 GPH PROPANE 6.19 GPH OIL	1,233 CFH NATURAL 13.48 GPH PROPANE
POWER SUPPLY (V/PH/HZ/A)			
CENTRAL HEATING MODULE	115/1/60/15	(2) 115/1/60/20	230/1/60/30
HEAT EXCHANGERS (EACH)	115/1/60/10	115/1/60/15	115/1/60/15
BASE	SKID	TRAILER	TRAILER
DIMENSIONS, LxWxH (INCHES)	54x35x81	172x93x93	191x73x104
WEIGHT (LBS)	820	7,155	3,500

IDEAL FOR:

Bring your winter construction site to a work-ready state quickly, efficiently and safely. The 50% propylene glycol mix (a low toxicity anti-freeze) is heated, run through a hose, and covered with curing blankets to thaw frozen ground. Hydro-Thaw units can thaw up to 6,000 sq. ft. of frozen ground, 12 inches deep per day.*

FEATURES:

- Self-contained, mobile units can thaw isolated, remote locations
- Prepares sites for winter dirt and concrete work
- Protects sites from frost penetration and can eliminate the need for temporary winter enclosures



Ground Thawing Equipment



PRODUCT SPECIFICATIONS	HTHW-2000 NATURAL GAS OR PROPANE	HTHW-2000 FUEL OIL	HTHW-2000G FUEL OIL
BTU/HR INPUT	280,000	280,000	280,000
BTU/HR OUTPUT	224,000	231,000	231,000
HEATING CIRCUITS	2	2	2
FUEL	NATURAL GAS OR PROPANE	NUMBER 1 FUEL OIL	NUMBER 1 OR 2 FUEL OIL
FUEL USAGE (AT FULL LOAD)	280 CFH NATURAL GAS 3.0 GPH PROPANE	2.0 GPH	2.65 GPH
FUEL CAPACITY	NO ONBOARD CAPACITY	150 GAL	150 GAL
GAS SUPPLY PRESSURE (MIN)	2 TO 10 PSI		
DIMENSIONS, LxWxH (INCHES)	205x100x98	205x100x98	195x102x90
WEIGHT (LBS)	7,400	7,400 (W/O FUEL) 8,400 (FULL FUEL)	7,860 (W/O FUEL) 8,910 (FULL FUEL)
POWER SUPPLY (V/PH/Hz/A)			
OPTION 1	230/1/60/20	230/1/60/20	230/1/60/20
OPTION 2	TWO, 115/1/60/15	TWO, 115/1/60/15	TWO, 120/1/60/15
OPTION 3	-	-	8 KW DIESEL GENERATOR

*Soil conditions and hose layout will affect frost removal rate

CH-1500

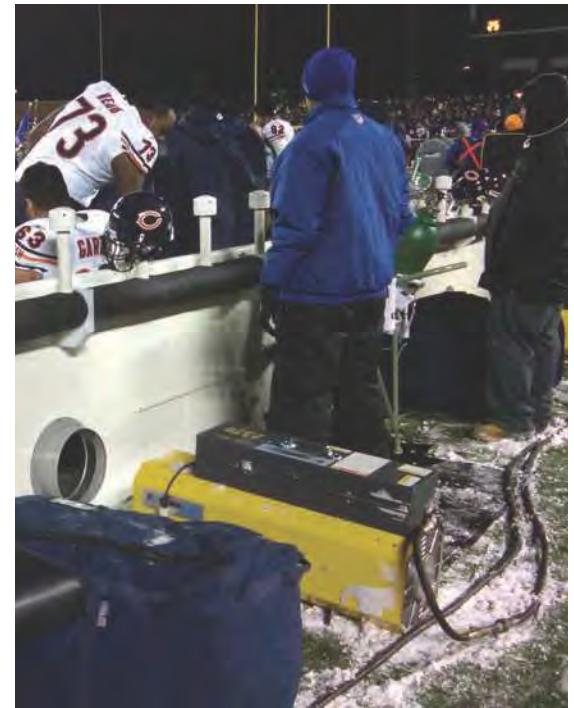


IDEAL FOR:

The CH-Series “construction” heaters are designed for portability and versatility with high discharge temperatures and comparatively lower fan induction ratios. These direct-fired heaters work well in loose enclosures such as under concrete deck pours, masonry enclosures, and spot heat situations. Ideal for sites where only 115V power is available.

FEATURES:

- Equipped with electronic flame supervision for safety
- Proof-of-air-flow control verifies proper air-flow before ignition can take place
- Remote thermostat automatically cycles from low to high fire to maintain desired room temperature



PRODUCT SPECIFICATIONS	CH-300	CH-600	CH-1000	CH-1500
BTU/HR MIN	150,000	300,000	500,000	750,000
BTU/HR MAX	300,000	600,000	1,000,000	1,500,000
CFM	1,700	3,000	6,000	7,000
NATURAL GAS	1" NPT	1" NPT	1" NPT	1" NPT
PROPANE	1/2" NPT	1/2" NPT	1/2" NPT	1" NPT
POWER SUPPLY (V/PH/HZ/A)	115/1/60/10	115/1/60/15	115/1/60/20	115/1/60/20
DIMENSIONS LxWxH (INCHES)	41x12x21	55x20x43	61x24x49	61x32x48
WEIGHT	86	240	330	378

INFRA-N/P



Infrared Heaters

IDEAL FOR:

Infrared (or radiant) heaters can work well during the early phases of construction when no electrical power is available or in open or loosely enclosed structures. Fueled by propane or natural gas, these heaters warm people or objects, not the air, even in drafty areas.

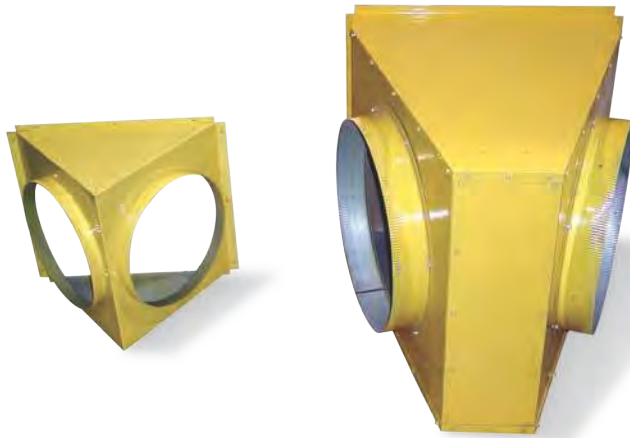
FEATURES:

- Thermostatically controlled
- Portable, heavy duty frame under 50 lbs
- Safety approval, cWHus - Warnock Hersey ANSI Z83.7 2000 CSA 2.14 2000



PRODUCT SPECIFICATIONS	INFRA-N	INFRA-P
BTU/HR	100,000	100,000
FUEL SUPPLY	NATURAL GAS 2-10 PSI	PROPANE 2-10 PSI
FUEL CONSUMPTION	100 CFH	1.1 GPH
DIMENSIONS, LxWxH (INCHES)	16x16x35	16x16x35
WEIGHT (LBS)	47	47

TRANSITIONS



Various Accessories Are Available To Adapt Our Equipment To Your Unique Application.

Air Distribution: Power Distribution:

- White Vinyl Duct
- Fabric Duct
- Duct Transitions
- Tent Wall Louvers
- Extension Cords
- Transformers
- Distribution Panels
- Camlock Connections

Fuel Distribution:

- Gas Hose
- Vaporizers
- Manifolds



IDEAL FOR:

Portable and versatile, these industrial fans can be used to distribute air in heating, cooling, and dehumidifying applications. Built for durability, our fans are suitable for high-temperature, dusty, or damp environments. Their high volume air movement and exchange make them ideal for structural and space drying applications.

FEATURES:

- Options include carts and wheels for portability
- Fan motors are ball-bearing smooth for quiet, virtually maintenance-free operation
- Multiple types and sizes for every application
- Built to withstand harsh industrial and construction environments



FAN 36



PRODUCT SPECIFICATIONS

MODEL	DESCRIPTION	CFM	POWER SUPPLY (V/PH/HZ/A)	MOTORHP	DIMENSIONS LxWxH (IN)	WEIGHT (LBS)	BASE
FAN PROP	24" LIGHT DUTY, WIRE CAGE	4,500	115/1/60/10	.25	24x16x26	45	3' OR 5' PEDESTAL
FAN 20 MLT	20" MEDIUM DUTY, MOLDED PLASTIC	5,480	115/1/60/10	.5	12x25x25	44	FLOOR STAND
FAN 24	24" LIGHT DUTY, WIRE CAGE	5,790	115/1/60/10	.5	28x22x28	48	2-WHEEL CART
FAN 30 BLY	30" HEAVY DUTY, ON CART	13,700	115/1/60/20 230/1/60/15	1.5	32x37x49	154	2-WHEEL CART BAR JOIST
FAN 36	36" MEDIUM DUTY, MOLDED PLASTIC	11,000	115/1/60/10	.5	20x38x38	68	2-WHEEL CART
FAN 36 GV	36" HEAVY DUTY, METAL	18,000	208-230/1/60/20 208-230/3/60/10 460/3/60/5	3	48x32x55	375	4-WHEELS
FAN 48S	48" MEDIUM DUTY, METAL	25,000	208-230/1/60/20 208-230/3/60/10 460/3/60/5	2	55x24x61	457	4-WHEELS
FAN 48	48" HEAVY DUTY, METAL	27,000	230/1/60/20 230/3/60/10 460/3/60/5	3	62x28x66	320	4-WHEELS

WC-1HP



IDEAL FOR:

Evaporative coolers are ideal for spot cooling workshops, warehouses, gymnasiums, or outdoor construction and special events. These units are designed for use when air conditioning is cost prohibitive or impractical. Just like people cool themselves through perspiration, evaporative coolers lower the temperature by evaporating water from cellulose pads. These units can also be used to add humidity to a space.

FEATURES:

- Operates on standard 115V power
- Powerful directional airflow throws air up to 100 ft.
- Includes large on-board water reservoir or connect to a garden hose for continuous use



PRODUCT SPECIFICATIONS	WC-1HP
COOLING CAPACITY	4 TONS
AIR DELIVERY	3020 CFM
WATER SUPPLY CONNECTION	3/4" HOSE
WATER RESERVOIR	24 GALLONS
POWER SUPPLY (V/PH/HZ/A)	115/1/60/15
DIMENSIONS LxWxH (IN)	35x35x52
WEIGHT (LBS)	225

IDEAL FOR:

Water-cooled portable air conditioners do not require condenser air ducting and are ideal for enclosed spaces where you cannot discharge the condenser heat. Alternatively, the rejected heat is transferred through the water leaving the condenser coil to a drain. These units are most cost-effective to operate where there is a central chiller plant.

FEATURES:

- Quiet, high-efficiency compressors
- Electronic temperature control
- Washable, aluminum-mesh coil air filters
- Efficient water-flow management



PRODUCT SPECIFICATIONS

MODEL	TONS	CFM	DISCHARGE DIRECTION	POWER SUPPLY (V/PH/HZ/A)	DIMENSIONS LxWxH (IN)	WEIGHT (LBS)	BASE
PACW-1	1	400	ADJUSTABLE	115/1/60/15	20x13x32	110	CASTERS
PACW-1.5	1.5	600	ADJUSTABLE	115/1/60/15	24x13x38	150	CASTERS
PACW-2	2	810	ADJUSTABLE	208-230/1/60/15	24x13x38	160	CASTERS
PACW-3	3	1,300	ADJUSTABLE	208-230/1/60/20	28x16x47	240	CASTERS
PACW-4.5K2	4.5	1,900	HORIZONTAL	208-230/3/60/30	70x35x41	450	CASTERS
PACW-5	5	1,950	ADJUSTABLE	460/3/60/20	39x28x52	520	CASTERS
PACW-5.5K21	5.5	2,200	HORIZONTAL	208-230/1/60/45	70x35x41	751	CASTERS

PAC-1.5B



IDEAL FOR:

Designed for portability and convenience, our versatile air-cooled portable air conditioners set up in minutes and their rugged design rolls easily from shop floor to indoor office areas. These units are ideal for a/c failure or planned maintenance, and spot or supplemental cooling of data centers, production areas, temporary facilities, manufacturing centers, laboratories, hospitals, air hangars, and special events. These units operate at office-friendly sound levels.

FEATURES:

- Quick and easy installation
- Convenient, single unit design
- Economical and efficient operation
- Industrial-grade casters for easy portability



PRODUCT SPECIFICATIONS

MODEL	TONS	CFM	POWER	DIMENSIONS LxWxH (IN)	WEIGHT (LBS)	BASE
PAC-1.2	1.2	350	115/1/60/15	26x20x34	163	CASTERS
PAC-1.5A	1.5	600	115/1/60/15	29x28x41	232	CASTERS
PAC-1.5B	1.5	500	115/1/60/15	28x23x47	221	CASTERS
PAC-2	2	750	208-230/1/60/20	29x28x41	251	CASTERS
PAC-3	3	1,200	208-230/1/60/30	30x28x51	336	CASTERS
PAC-5	5	2,300	208-230/1/60/60	42x30x70	650	CASTERS
PAC-5P4	5	2,300	460/3/60/20	42x30x70	650	CASTERS
PAC-5B23	5	2,300	208-230/3/60/40	47x31x64	740	CASTERS
PAC-5B4	5	2,300	460/3/60/20	47x31x64	740	CASTERS
PAC-10P23	10	4,000	208-230/3/60/68	86x34x78	1,860	CASTERS
PAC-10P4	10	4,000	460/3/60/32	86x34x78	1,860	CASTERS

Accessories Adapt Our Portable Air Conditioners To Any Application

Nozzle Kit: (2) flexible nozzles optimize the ability to direct cool air precisely where needed

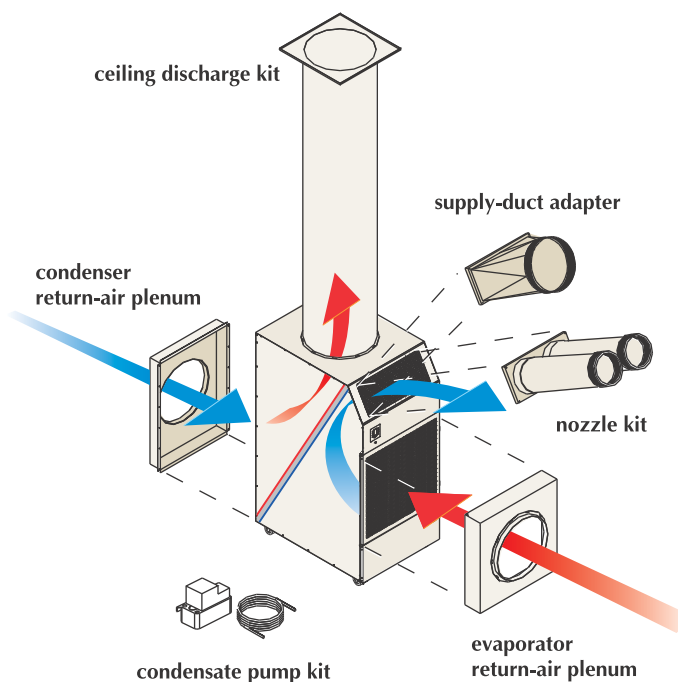
Ceiling Discharge Kit: allows condenser-air to be vented to the plenum area above a suspended ceiling

Condensate Pump: automatically removes evaporator-coil condensation allowing continuous unit operation

Condenser Return-Air Plenum: allows supply air to be ducted to the condenser coil

Evaporator Return-Air Plenum: allows supply air to be ducted to the evaporator coil

Cold Air Supply-Duct Adapter: allows user to connect ductwork to unit's cold-air discharge



PAC-50T4H



IDEAL FOR:

Our large fleet of industrial, portable air conditioners are suitable for controlling temperature and humidity levels for new construction or retrofits, supplemental or emergency cooling, industrial process cooling, military and disaster relief, and special events. From simple spot cooling to sophisticated, long-term solutions, TEMP-AIR has a solution for any type and size of structure.

FEATURES:

- Convenient single unit design
- Many units include electric heat and dehumidify modes
- Equipped with remote thermostats for precise temperature control



COOL ONLY

MODEL	COOLING TONS	CFM	ESP* (IN)	POWER SUPPLY (V/PH/HZ/A)	DIMENSIONS LxWxH (IN)	WEIGHT (LBS)	BASE
PAC-5T21	5	2,000	1.14	208-230/1/60/50	86x47x44	906	CASTERS
PAC-10T2	10	4,000	2.0	208-230/3/60/60	94x64x55	1,426	CASTERS
PAC-15T2	15	6,000	2.0	208-230/3/60/90	110x74x68	2,176	CASTERS
PAC-20T2	20	8,000	2.0	208-230/3/60/125	140x94x66	3,102	SKID
PAC-20T4	20	8,000	2.0	460/3/60/70	124x92x66	2,987	SKID
PAC-25T4	25	10,000	1.5	460/3/60/70	124x92x79	3,393	SKID
PAC-30R4	30	9,000	2.75	460/3/60/80	120x96x102	7,200	SKID
PAC-60R4	60	18,000	6.0	460/3/60/180	240x98x102	14,300	SKID
PAC-75T4	75	14,000-26,000	3.5	460/3/60/200	276x126x100	13,800	SKID

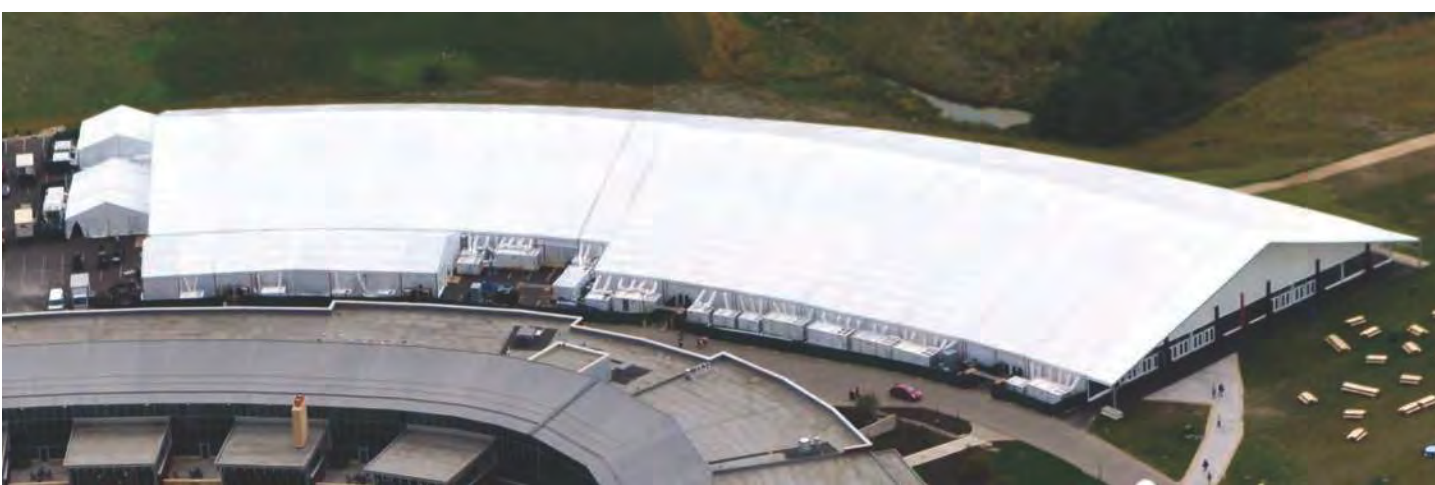
COOL / HEAT

MODEL	COOLING TONS	HEATING (KW)	CFM	ESP* (IN)	POWER SUPPLY (V/PH/HZ/A)	DIMENSIONS LxWxH (IN)	WEIGHT (LBS)	BASE
PAC-3T4H	3	17	1,200	1.14	460/3/60/30	68x36x51	739	CASTERS
PAC-5T4H	5	18	2,000	1.14	460/3/60/30	96x53x52	1,320	CASTERS
PAC-15T2H	15	36	6,000	2.0	208-230/3/60/130	116x80x71	2,300	CASTERS
PAC-15T4H	15	54	6,000	2.0	460/3/60/100	110x74x68	2,193	CASTERS
PAC-20T4H	20	72	8,000	2.0	460/3/60/130	140x94x66	2,950	SKID
PAC-25T2H	25	54	10,000	1.5	208-230/3/60/200	140x88x65	3,525	SKID
PAC-25T4H	25	72	10,000	1.5	460/3/60/130	140x88x65	3,108	SKID
PAC-50T4H	50	108	18,000	2.5	460/3/60/180	243x100x93	8,400	SKID

COOL / HEAT / DEHUMIDIFY

MODEL	COOLING TONS	HEATING (KW)	CFM	ESP* (IN)	POWER SUPPLY (V/PH/HZ/A)	DIMENSIONS LxWxH (IN)	WEIGHT (LBS)	BASE
PAC-10T2HD	10	18	4,000	2.0	208-230/3/60/100	94x57x65	1,200	CASTERS
PAC-10T4HD	10	36	4,000	2.0	460/3/60/80	98x60x64	1,400	CASTERS
PAC-15T2HD	15	54	6,000	2.0	208-230/3/60/260	117x80x71	1,950	CASTERS
PAC-15T4HD	15	54	6,000	2.0	460/3/60/130	117x80x71	1,950	CASTERS
PAC-25T4HD	25	72	10,000	1.5	460/3/60/150	147x94x68	3,400	SKID

*ESP = External Static Pressure in inches water column



TAH-150

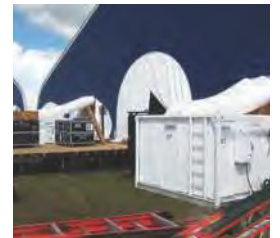


IDEAL FOR:

These multi-purpose air handlers can be used for the cooling or heating of construction sites, industrial buildings, military facilities, or process applications and are available in 20-150 ton packaged units with 3,500-30,000 CFM blower capacity. May be used with chilled water, hot water, or steam.

FEATURES:

- Designed for use with chillers or boilers
- Electrical disconnect with optional electrical supplies
- Fork pockets and lifting eyes for quick and easy installation
- Multiple discharge air options on larger units



PRODUCT SPECIFICATIONS

MODEL	CFM	ESP* (IN)	MAX GPM	POWER SUPPLY (V/PH/HZ/A)	DIMENSIONS LxWxH (IN)	CONNECTIONS	WEIGHT (LBS)	BASE	MAX PRESSURE
TAH-20	3,500	.63	55	230/1/60/15 208-230/3/60/10 460/3/60/5	63x34x76	2.0" NPT	1,372	WHEEL	100
TAH-40	5,000	.75	60	230/1/60/35 230/3/60/20 460/3/60/10	106x46x50	2.5" NPT	2,000	SKID	100
TAH-100	20,000	3.5	275	208/3/60/80 230/3/60/70 460/3/60/35	120x100x83	4"-150 LB FLANGE	5,165	SKID	100
TAH-140	27,000	3.5	375	460/3/60/60	120x100x83	4"-150 LB FLANGE	5,500	SKID	100
TAH-150	30,000	0.5	375	208/3/60/110 230/3/60/100 460/3/60/50	166x100x102	4"-150 LB FLANGE	7,900	SKID	100

*ESP = External Static Pressure in Inches Water Column

IDEAL FOR:

During plant turnarounds, unplanned interruptions or company-wide disasters, TEMP-AIR can provide the comfort and chilled water essential to the operations of our customers in manufacturing, hospitals, schools, and many other industries. Contact a TEMP-AIR sales representative for a custom quote.

EQUIPMENT:

- Air-Cooled Chillers – 10-500 Tons
- Water-Cooled Chillers – 300-1,200 Tons



PRODUCT SPECIFICATIONS								
MODEL	TONS	TYPE	GPM	POWER SUPPLY (V/PH/A)	DIMENSIONS LxWxH (IN)	WEIGHT (LBS)	PUMP (HP)	FLANGED PUMP (IN)
TCA-10	10	AIR-COOLED	24-48	460/3/31	84x35x66	1,500	1.5	1.5
TCA-25	25	AIR-COOLED	30-89	460/3/65	138x63x93	3,300	5	2.5
TCA-35	35	AIR-COOLED	30-90	230/3/200	175x63x93	4,081	5	2.5
TCA-40	40	AIR-COOLED	48-144	460/3/95	122x100x96	3,680	5	2.5
TCA-60	60	AIR-COOLED	150	460/3/135	181x100x97	7,740	10	4
TCA-100	100	AIR-COOLED	100-300	460/3/215	219x100x98	9,700	10	4
TCA-110	110	AIR-COOLED	132-396	460/3/250	274x100x102	10,700	10	4
TCA-150	150	AIR-COOLED	180-680	460/3/400	240x96x102	18,840	20	6
TCA-200	200	AIR-COOLED	285-725	460/3/455	274x100x102	15,672	30	6



TD-2000

**IDEAL FOR:**

Remove unwanted moisture and precisely control humidity levels with TEMP-AIR portable dehumidifiers. Our portable, packaged refrigerant or desiccant dehumidifiers can be used to help speed up construction finishing (flooring, painting, and millwork conditioning), prevent mold, mildew, and other allergens, and restore flood damaged buildings quickly and efficiently.

FEATURES:

- Ideal for low R.H. applications
- Helps maintain a stable temperature and humidity environment on your project
- Large CFM range of models
- Gas and electric options available





REFRIGERANT (DX) DEHUMIDIFIERS

MODEL	POWER SUPPLY (V/PH/HZ/A)	CFM	ESP* (IN)	GALLONS/DAY (80 FDB / 78 FWB)	DIMENSIONS LxWxH (IN)	WEIGHT (LBS)	BASE
TD-200	115/1/60/15	538	N/A	28	24x22x44	162	CASTERS
PAC-10T2HD	230/3/60/100	4,000	2.0	237	94x57x65	1,200	CASTERS
PAC-10T4HD	460/3/60/80	4,000	2.0	237	98x60x64	1,403	CASTERS
PAC-15T2HD	230/3/60/260	6,000	2.0	344	117x80x71	1,950	CASTERS
PAC-15T4HD	460/3/60/130	6,000	2.0	344	117x80x71	1,950	CASTERS
PAC-25T4HD	460/3/60/150	10,000	1.5	556	147x94x68	3,393	SKID

DESICCANT DEHUMIDIFIERS

MODEL	POWER SUPPLY (V/PH/HZ/A)	CFM	ESP* (IN)	GALLONS/DAY (80 FDB / 78 FWB)	DIMENSIONS LxWxH (IN)	WEIGHT (LBS)	BASE
TD-600E	230/1/60/30	600	0.75	23	32x26x43	140	CASTERS
TD-1000E	230/1/60/90	1,000	2.0	43	68x34x50	600	CASTERS
TD-2000E	460/3/60/60	2,000	2.0	143	78x34x60	895	CASTERS
TD-2000G	230/1/60/30	2,000	2.0	143	78x34x60	900	CASTERS
TD-5000E	460/3/60/175	5,000	5.0	358	172x52x84	5,150	SKID
TD-5000G	460/3/60/30	5,000	5.0	358	172x52x84	5,150	SKID
TD-7500G	230/3/60/60 460/3/60/30	7,500	2.0	555	144x74x74	4,100	SKID

*ESP = External Static Pressure in Inches Water Column

C-2000



IDEAL FOR:

The C-2000 portable air filtration unit was developed to handle the rigorous demands of micro-decontamination operations where reliable, high volume air filtration is essential to safety and productivity. This portable HEPA air cleaner can be used in negative pressure applications. (Can also be used in recirculation and positive pressure applications.)

FEATURES:

- Plugs into a standard 115V outlet
- A variety of filter options are available including: HEPA, Carbon, and ASHRAE
- Compact, portable, and easily adapted for permanent installation



PRODUCT SPECIFICATIONS	C-2000
HEPA EFFICIENCY	99.7% @ 0.3 MICRON
CFM	2,000/1,600
SPEED CONTROL	2-SPEED
POWER SUPPLY (V/PH/HZ/A)	115/1/60/15
DIMENSIONS LxWxH (IN)	37x28x33
HOUSING	STAINLESS STEEL
PREFILTER SIZE (IN)	25x25
HEPA SIZE (IN)	24x24x11.5
WEIGHT (LBS)	170

BUILDING GREEN? we can help!

Construction IAQ Management Plan

- IEQ Credit 3.1: During Construction
- IEQ Credit 3.2: Before Occupancy

The intent of these credits is to implement an Indoor Air Quality (IAQ) Management plan during construction and the pre-occupancy phases of the building that reduces indoor air quality problems and reduces health issues with construction workers and building occupants.

Not only can TEMP-AIR provide an IAQ solution, but we can provide much of the required documentation for these credits in our estimate and record air quality information during the phases of construction, greatly simplifying your efforts to comply with the LEED® requirements.

LEED®

A TEMP-AIR Estimate Will Include:

- Analysis of ventilation requirements to ensure compliance with OSHA regulations
- Analysis of heating, cooling, or dehumidifying requirements
- Analysis of moisture management and condensation precautions
- Equipment selection, sizing, and placement during construction phases
- Fuel and power requirements
- Documentation

TEMP-AIR has LEED® Accredited Professionals on staff. Contact us today for an IAQ solution for your next LEED® project.



1. "LEED" and "USGBC" and related logos are trademarks owned by the U.S. Greenbuilding Council and are used by permission.
2. U.S. Greenbuilding Council: "LEED 2009 for New Construction and Major Renovations Rating System." 2009 : 63-65



NATIONAL HEADQUARTERS

TEMP-AIR, INC.

3700 West Preserve Boulevard

Burnsville, Minnesota, 55337

CONTACT US BY PHONE

Call (800) 836-7432, and a customer service representative will connect you with a TEMP-AIR location near you.

CONTACT US ONLINE

Visit us at: <http://temp-air.com>

14 LOCATIONS

NATIONWIDE

Boston Sales Office

270 Southwest Cutoff
Worcester, MA 01604
(800) 666-8133

Denver Sales Office

3697 South Natches Court
Englewood, CO 80110
(800) 577-7053

Minneapolis Sales Office

3700 West Preserve Blvd.
Burnsville, MN 55337
(800) 836-7432

Sacramento Sales Office

3301 Sunrise Blvd., Suite F
Rancho Cordova, CA 95742
(800) 859-1085

Chicago Sales Office

39W171 Highland Ave.
Elgin, IL 60124
(800) 283-2843

Detroit Sales Office

21703 Mound Road
Warren, MI 48091
(800) 678-1488

Atlanta Sales Office

Atlanta, GA
(800) 656-6000

St. Louis Sales Office

29 International Plaza Court
St. Ann, MO 63074
(800) 283-6743

Cleveland Sales Office

PO Box 1118
Medina, OH 44258
(800) 443-3301

Kansas City Sales Office

200 NW Harlem Road
Kansas City, MO 64116
(800) 430-0523

Philadelphia Sales Office

850 Dawson Drive
Newark, DE 19713
(800) 656-6000

Columbus Sales Office

2573 Ferris Road, Bldg. 3
Columbus, OH 43224
(800) 444-3481

Milwaukee Sales Office

N901 County Road L
Watertown, WI 53098
(800) 558-9209

Portland Sales Office

440A Industrial Way
Longview, WA 98632
(800) 859-1085



TEMP-AIR, Inc.
Corporate Headquarters
3700 West Preserve Boulevard
Burnsville, MN 55337

Toll-Free: (800) 836-7432

Temp-Air.com

 [Facebook.com/TempAir](https://www.facebook.com/TempAir)

 [Twitter.com/TempAirInc](https://twitter.com/TempAirInc)

