



Pipes Protected in a Matter of Minutes

Pipe Restoration, Inc.

Washington D.C. * Los Angeles * London * Madrid * Hong Kong

LEAD-FREE, LEAK-FREE™ PIPE PROTECTION



WHY REPIPE?®

RENEW AND RESTORE YOUR PLUMBING
from the inside out.

Less noise. Less mess. Less destruction.



Protected under US Patents #7160574, #7517409, #7858149, #8033242, #8206783, #8343579, #8354140, #8399813, #8524320, #8696823, #8795768, #8887660, #8895905, #9273185, #9352357, Canadian Patents #2707023, #2674439, European Patent #2099851 with additional patents pending. © June 2016 ePIPE®. All Rights Reserved

Plumbing Problems

A number of factors can work alone or in combination to affect the rate of corrosion in any piping system. Depending on the number and degree of these factors, even a new piping system can show signs of corrosive wear in as few as two years after installation. Even the highest quality water source can cause some of these problems in your piping system:

Pinhole Leaks / Failing Copper



These miniscule leaks in your pipes can cause major damage such as mold and water damage to your floor, ceiling, or walls.

Lead / Copper Contaminants



Corrosion causes lead and copper contaminants to leach into your drinking water.

Low Water Flow / Encrusted Galvanized

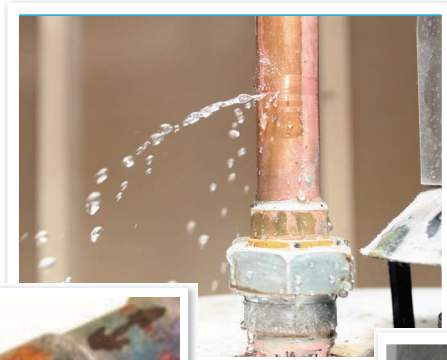


Poor or lower flow than normal is also a telltale sign that there may be a problem in your piping system.

Discolored Water

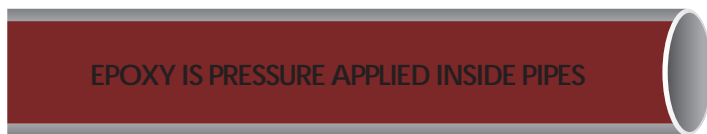


Many people attribute brown water to the water source, when in fact, the water entering their home is clean. Rust in their pipes is contaminating their water.



The ePIPE® Solution - 90 Minute Return to Service

How it works



Air drying of the pipes

Air hoses are connected to the piping system. The isolated system is then dried with preheated, filtered air.

Cleaning

The dried pipes are cleaned using an air and sand mixture that sandblasts the inside surface of the pipes. The cleaning process prepares the internal pipe surface for proper bonding of the epoxy.

Epoxy coating

The final stage of the ePIPE process is the application of the epoxy lining to the system. Pipes are ready for return to service in as little as 90 minutes.

REDUCES LEAD & COPPER LEACHING

ePIPE reduces lead & copper leaching and blocks other in-line lead contributors, such as lead solder from leaching into the drinking water supply.

Using the ePIPE process, lead levels can be reduced to well below the World Health Organization's (WHO) cut-off guidelines for lead, at 10ppb.



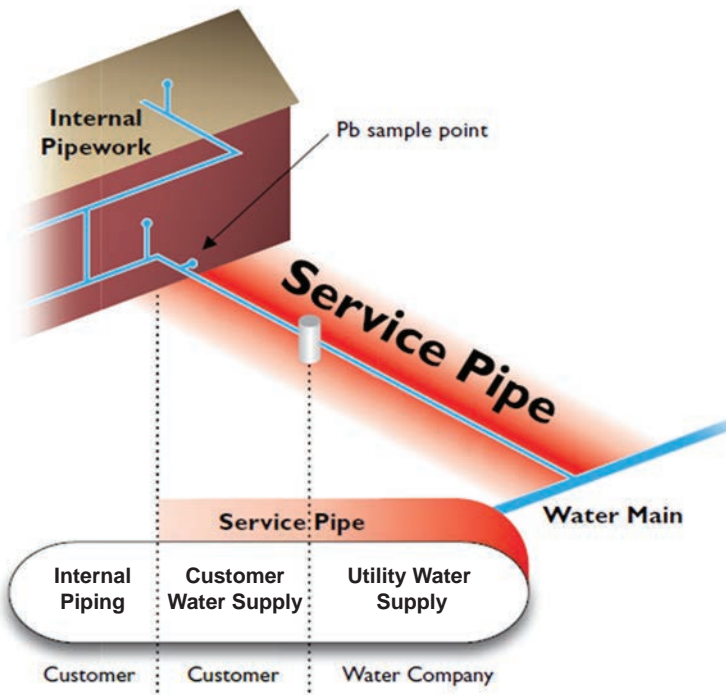
Lead-Free, Leak-Free™ Pipe Protection

Lead exposure has become a major health concern worldwide. Lead is a cumulative poison, and exposure can affect nearly every system in the body. Children under 6 and pregnant women are the most susceptible to the negative health effects of lead exposure.

ePIPE is committed to leading the way to Lead-Free, Leak-Free Pipes

ePIPE in-place lining technology reduces lead leaching from lead pipes and other in-line lead contributors, such as lead solder from leaching into the drinking water supply.

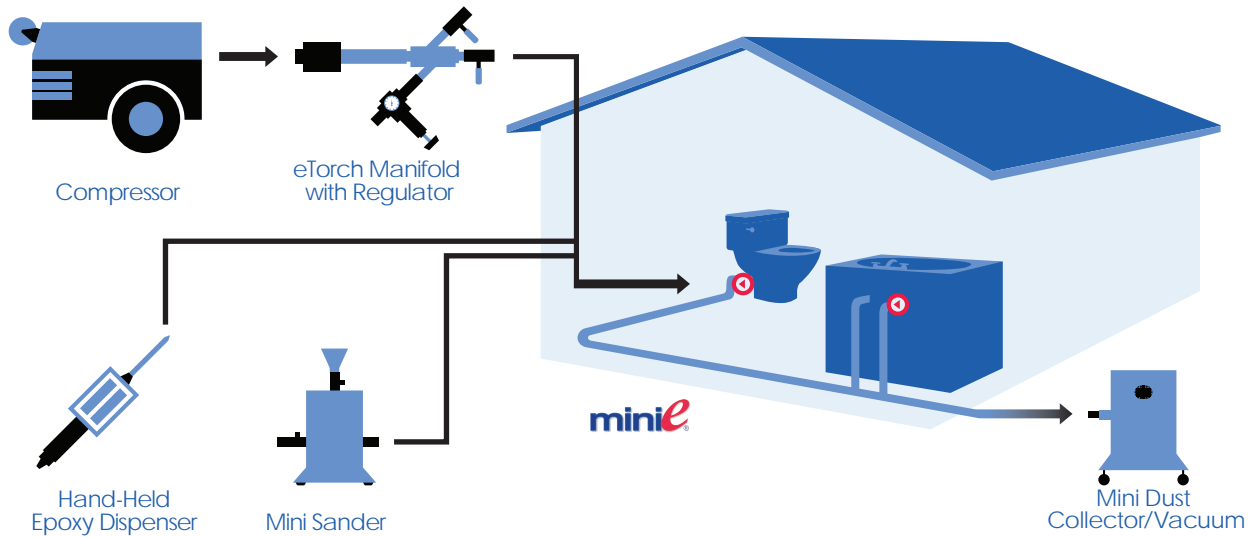
Using the ePIPE process, lead and copper levels are reduced to well below the EPA and World Health Organization's cut-off guidelines.



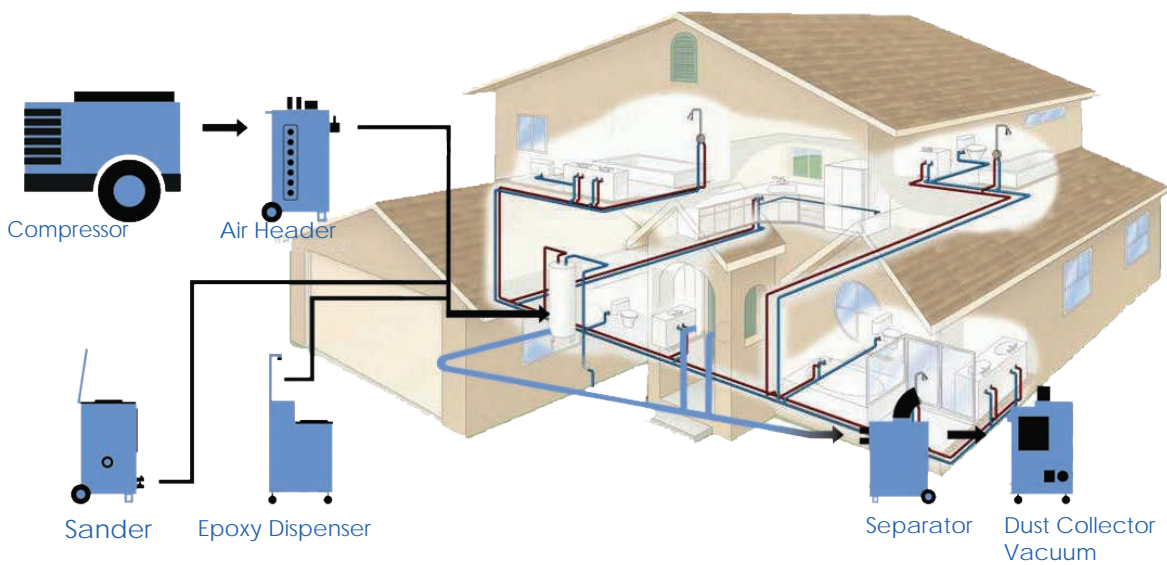
- 90 minute return to service
- Pipes are restored in-place with minimal customer disruption
- Can be applied to drinking water pipes having a diameter as small as 1/2"
- Can be used to protect both internal and supply/communication pipes

Single Line and Residential Restoration

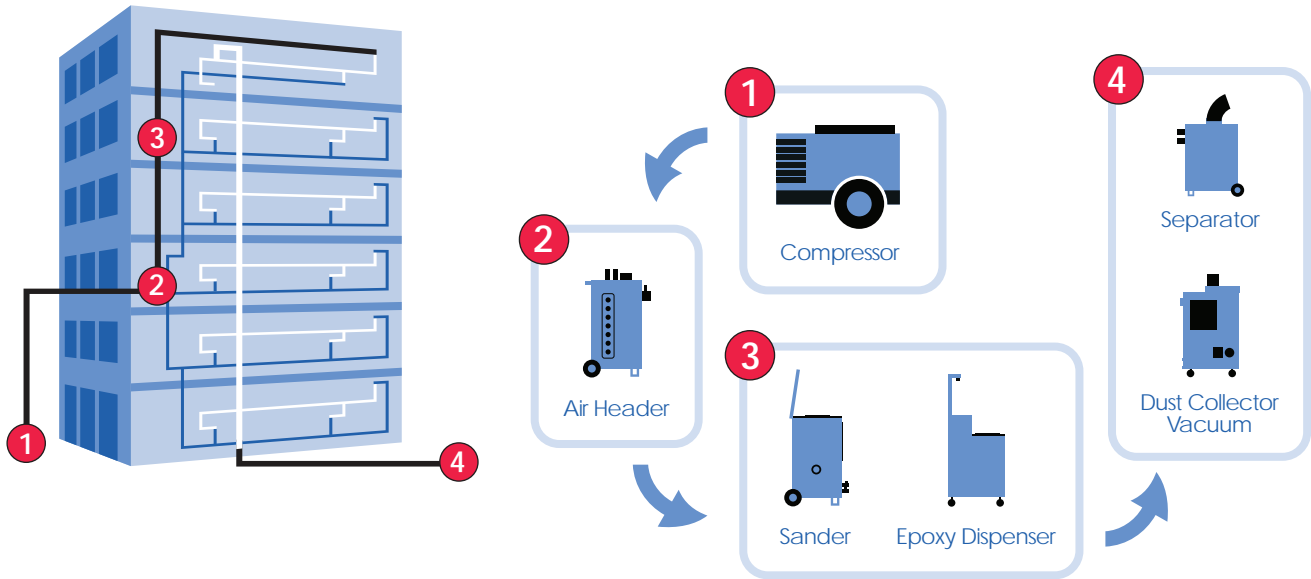
Slab Leaks & Water Service Lines Repaired in a matter of Hours



Whole House Restoration - in most cases, water is back on THE SAME DAY



Commercial Restoration



Commercial Buildings



Homeowners Associations



Hotels and Resorts



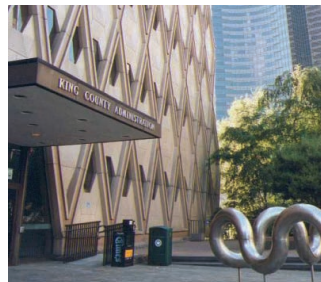
Schools



Apartments & Condominiums



Hospitals



Government Buildings



Retirement Centers

Specialty Projects



Lead Service Lines - No Road Closure



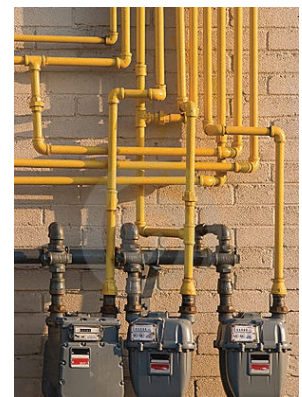
Pool Piping



Fire Sprinkler
Suppression Systems



HVAC Systems



Natural Gas Lines



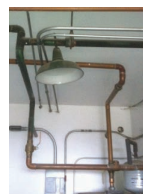
Department of Defense Projects



Davis AFB
pinhole leaks copper



Fort Knox
potable water corrosion
prevention



San Clemente Island
lead reduction



USNS Watkins
venting pipes, air and oil

ePIPE Benefits

Stops Pinhole Leaks

The epoxy lined pipe, ePIPE will last for years, preventing leaking problems in your piping system.

Reduces Lead & Copper Leaching

The ePIPE restored piping system protects your pipes from corroding and pitting, and can reduce the leaching of lead and copper contaminants to below EPA and WHO standards.

Minimally Invasive

The patented ePIPE process restores your pipes without the mess and expense of a repipe.

Cost Effective

Because there is no need to destroy walls, ceilings or floors, you save a significant amount of money in reconstruction costs.

90 Minute Return to Service

Pipes are ready for return to service in as little as 90 minutes. In most cases, your water will be back on the **SAME DAY!**

Fast, Quiet, Clean

The ePIPE process is quiet, and unlike a repiping construction job, ePIPE restoration takes place within the pipe.

Improved Water Flow

Significant build up of corrosion or pinhole leaks can cause low water flow. The ePIPE process gives you the flow your system was intended to deliver.

Clean Water

No more brown water or discoloration. ePIPE provides a safe, clean epoxy lined piping system.



Reduce water leakage



Line both customer supply and communication pipe



Reduce excavation cost and customer disruption



Better outcome from budget



Improve public health



Go beyond compliance



Still open for business



Better for the environment

Approvals

ePIPE products meet local and international standards.

US, Canada and Latin America

ANSI/NSF std61 - National Sanitation Foundation, listed Standard 61, immediate return to service hot and cold potable water pipes.

EU – EU 89/106EEC and EC1935/2004

ePIPE Complies to the requirements of regulation **(EC) No 1935/2004** of the European parliament. ePIPE is verified as suitable for use in hot and cold rated drinking water pipes. Additional per country approvals include Spain, Belgium, Finland, Sweden and Romania.

UK – WRAS BS 6920 and Regulation 31(4)(a) of the Water Supply (Water Quality) Regulations 2000

ePIPE is approved for use for in-situ application for hot and cold domestic water contact in pipes having an internal diameter from 12mm (1/2") with a **2 hour return to service** under **The Water Regulations Advisory Scheme (WRAS)**.

ePIPE meets requirements of Reg. 31(4)(a) for in-situ application to public water supplies. Water pipes having an internal bore, as small as 12mm (1/2"), can be restored, in-place, with a **2 hour** ready to return to service time using the patented ePIPE system.

Water Supply (Water Fittings) Regulations and Scottish Water Byelaws

The Water Supply (Water Fittings) Regulations and Scottish Water Byelaws play an important role in protecting public health, safeguarding water supplies and promoting the efficient use of water within customers' premises across the UK.

Singapore

Singapore Standard 375: 2001 Approved: "Suitability of non-metallic products for use in contact with water intended for human consumption with regard to their effect on the quality of the water". Tested to **WRAS, BS6920 British Standards**.



Plumbing Codes



Uniform Plumbing Code, USA and Canada - listed for application to metallic and non metallic pressurized pipes



NSF/ANSI Standard 61

IPC® - International Plumbing Code, listed domestic water piping

IRC® - International Residential Code compliance, listed domestic water piping



ICC-NES - International Code Council, National Evaluation Services - listed domestic water piping, PMG 1009 (Plumbing, Mechanical and Gas Code)



City of Los Angeles - for internal pipe coating of fire protection piping - Research Report, RR 5565



Proud member of the **U.S. Green Building Council**

Frequently Asked Questions

Who has used ePIPE?

Since the 1990's, ePIPE services have been provided first in North America, and then in Europe. Some of the largest plumbing service companies in the world provide ePIPE to their customers. Customers who have taken advantage of this proven patented technology include leading hotel brands such as Hilton, Marriott, Sheraton & Fairmont, US Department of Defense, US Army Corps of Engineers, Governments of Spain, and thousands of building owners.

How long will the ePIPE process take?

That depends on the project. On smaller jobs, pipes can be restored in a matter of hours. Most residential projects take less than 2 days to complete. On commercial projects, a schedule will be tailored to meet the specific needs of the facility.

Can I remain in my home and/or operate my business during the restoration?

YES! The ePIPE process is fast, clean and quiet and should not compromise a resident's standard of living. Commercial projects can be completed in phases over days, weeks, or months. Sections of the piping system can be isolated allowing the remainder of the property to continue operations during the restoration.

Is ePIPE safe?

ePIPE products meet international standards for contact with drinking water. In the US and Canada, ePIPE meets ANSI/NSF std61 – and is listed with National Sanitation Foundation, under Standard 61, immediate return to service hot and cold potable water pipes.

Is the ePIPE system an environmentally friendly alternative?

Yes, ePIPE restores your existing pipes, which in turn reduces the cutting of walls, floors and ceilings normally associated with most conventional methods. ePIPE reduces waste and strain on landfills. ePIPE protected pipe minimizes the leaching of harmful metals such as lead from entering your drinking water.

What types/diameters of pipes can be restored with ePIPE?

Both metallic and non-metallic pipes including copper, lead, steel, black iron, PVC, CPVC and PEX can be restored with ePIPE. Restored systems can include domestic water, radiant heating, snowmelt, fire sprinkler, natural gas piping, industrial process piping and pool piping systems.

ePIPE can restore most pressurized piping systems that you will find in your home or business up to 6 inches in diameter (152 mm).

How thick is the epoxy lining and will my water volume be reduced?

The epoxy thickness is applied in accordance with the manufacturer's specification and the Uniform Plumbing Code requirements depending on the application and size of piping. Your water will always meet or exceed the required flow per code requirements.



Reputation

We have protected thousands of properties with our patented, non-invasive process. The following testimonials are a small sampling of the comments we hear everyday from our customers. If you would like to talk to some of our customers about their experience, we will be happy to provide you with some references and their contact information.

ACE DuraFlo delivered everything they promised and more, on time and on budget. The cooperation and coordination were exceptional. Unforeseen complications were met with professionalism and overcome with experience. We had zero security or damage issues. I am continuously reminded by our residents how friendly, helpful and caring the ACE DuraFlo crew was. The signs at national parks and natural wonders say "take only memories and leave only footprints." ACE left us with the good memories and they even took their footprints.

*Alan Eicoff,
Project Manager
The Christopher Condominium*

Our members were never inconvenienced or without water for more than about 8-10 hours. The crews were polite and clean. Many homeowners left them alone to work for the day because they were so trustworthy and reliable. This is the most non-invasive cure for pinhole plumbing leaks.

*Board Member,
Cameray HOA
Laguna Niguel*

This was the least "painless" of any of the many remodeling projects I have ever done. The crew was neat and careful to avoid damaging flooring, walls, tile, furniture etc. I would certainly recommend this service to anyone.

Nancy M., Newport Beach

In my many years in the hospitality industry, I have never come across a product that would restore and meet code requirements like the ACE DuraFlo method of restoring supply water delivery systems. I highly recommend it to anyone. ACE DuraFlo is the way to go.

*John McIver,
Building Superintendent
Millennium Biltmore Hotel*

Your crews worked around all of the schools needs and were invisible to the staff. When the full staff and student body returned, they did not even realize you had been there. Your crews were meticulous in their day-to-day work as well as the "clean-up" process.

*Mark Steffen,
Maintenance and Operations Coordinator
Hawthorne School District*

After the ePIPE installation, residents could hardly tell that ACE DuraFlo had been there. "ePIPE fixed the problem and upgraded the property, so homeowners will be rewarded with peace of mind and a benefit of increased resale value."

*Skip Smith
Building Superintendent
Vista Del Lido, Newport Beach*

What a delightful company to deal with! Restores my faith in "plumbers".
Monte & Linda M. Fountain Valley

I am 80 years old and except for the \$2 I paid for my marriage license, I never felt I got more for my money than the pipe restoration you did for me. Your crew was conscientious, cordial, prompt, courteous and professional. The building inspector who examined the work told me your crew did a consistently good job.

John O., Port Hueneme

The construction crew did an excellent job and completed the work beyond my expectations. ACE DuraFlo took numerous steps to keep any inconvenience to our guests and associates to a minimum. I would absolutely recommend Pipe Restoration, Inc. and the ePIPE process to anyone facing a similar plumbing issue.

*Nate Nidey,
Director of Engineering
Sheraton Columbia Town Center Hotel*

We have seldom had such quality service. This is a very impressive company.

Marv & Ann K., Lake Forest

Have never experienced the "concern for personal property" as exhibited by your employees. All have an excellent work ethic and seemingly hold themselves accountable for the work performed. It is refreshing to see people actually practice customer satisfaction.

Bill N., Huntington Beach

Washington D.C. * Los Angeles * London * Madrid * Hong Kong

10 THINGS TO LOOK FOR WHEN RESTORING YOUR PIPES

1. **Since the 1990's ePIPE has been a market leader & innovator.** And we keep innovating -- from meeting new plumbing codes to improving our protective coatings for your pipes, with 15 patents and growing.
2. 90 minute cure times. Your water is turned back on the same day. **Why wait overnight if you don't have to?**
3. **No big mess** -- little to no digging or cutting into walls, floors, ceilings & foundations.
4. Our proven protective coating is the only UPC (Uniform Plumbing Code) approved epoxy for both metallic and non-metallic pipes.
5. **All of our technicians are 100% fully insured including Workers Comp.** Plus we always obtain the necessary work permits.
6. We have restored thousands of homes, apartments, schools, hospitals, hotels, military bases, naval ships, and even U.S. embassies.
7. **We're consistently rated in the top 5%** (out of more than 336,000) of licensed contractors in the state of California.
8. **Epoxy lining is our primary business. All of our technicians are trained and certified.** Each project always has at least one certified plumber on hand, and 90% or more of our technicians have 12+ years of experience.
9. ePIPE technology is licensed by the likes of Rotor Rooter, American Leak Detection, Mr. Rooter & recommended by AAA.
10. A+ rating by BBB, plus an A rating (the highest available) by Angie's List. **You can count on us to do exactly what we promise to do.**

Pipe Restoration, Inc.

3122 W. Alpine Street
Santa Ana, CA 92704

Toll Free: 800-359-6369
www.RestoreMyPipes.com



State License #821595

Financing available on
approved credit.

Do your research & check around, at the end of the day we're quite confident you'll see the value in what we do and why we are the market leader.
ePIPE is the best solution for restoring your pipes, hands down.



Protected under US Patents #7160574, #7517409, #7858149, #8033242, #8206783, #8343579, #8354140, #8399813, #8524320, #8696823, #8795768, #8887660, #8895905, #9273185, #9352357, Canadian Patents #2707023, #2674439, European Patent #2099851 with additional patents pending. © June 2016 ePIPE®. All Rights Reserved