



Test the TPI Advantage

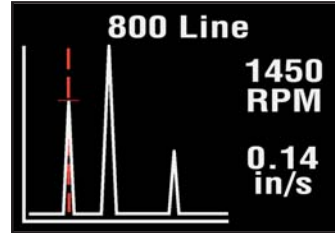
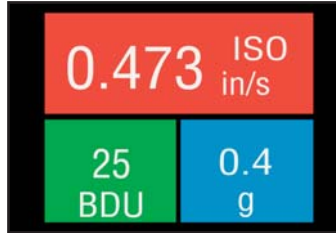
High Performance Test Instruments at the Right Price .

CBM TAW 0815



9070 Smart Vibration Meter

- 1 Detect out of balance, misalignment, looseness and bearing defects

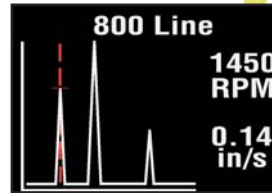
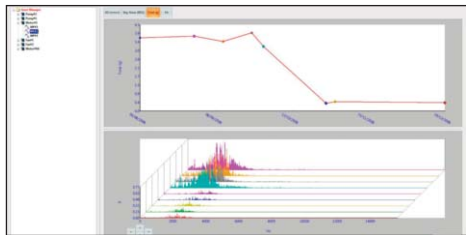


9070 Smart Vibration Meter: 9070 and A9070 Soft Pouch

\$495.00

9080 Smart Trend Meter Analyzes, Interprets and TRENDS

- 1 Detect out of balance, misalignment, looseness and bearing defects
- 2 Detects faults before breakdowns with VibTrend software



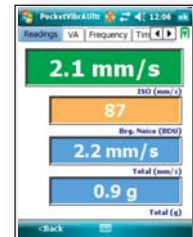
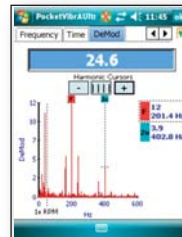
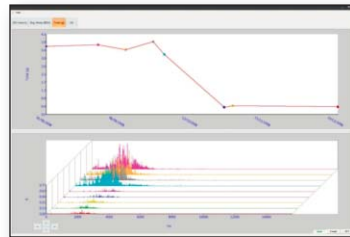
9080: A9081A docking cradle/USB & VibTrend standard software (up to ten assets with ten measurement points per asset), A9089 BNC/sensor/magnet and A9087 carrying case

\$995.00

Ultra II does it all

- High spec CBM data collector • Plant and asset inspections
- Single and dual plane balancing (for dual plane balancing additional A9089 accelerometer required)

- 1 Detect out of balance, misalignment, looseness and bearing defects
- 2 Detects faults by identifying the cause preventing breakdowns from happening
- 3 Trending and bearing analyses with C-Trend software



9041: Nomad multifunction head with balancing (For dual plane balancing purchase additional accelerometer A9089) and RFID capability, Accelerometer, Tachometer, tachometer mount adapter, Cables, 25 RFID tags, PC Software CD, Trimble Nomad, Network, Inspection, and Lube software.

\$7,495.00

See TPI's complete line at www.testproductsintl.com



9070 Smart Vibration Meter

9080 Smart Trending Vibration Meter

9070 Smart Vibration Meter

Vibration Analysis at the touch of a button!

Affordable and easy to use

For faster, reliable and repeatable readings simply remove stinger and attach an industry standard magnet with 1/4 28 thread; optional A9073.

Built to last: rugged, reliable, IP67 waterproof, long battery life

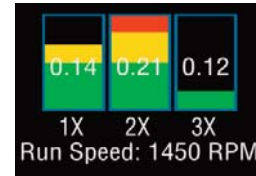
Not only does the rugged design and waterproof case keep the 9070 working in demanding environments, but advanced technology ensures a long battery life - with 1,500 measurements (50 hours of normal use).

• Helps prevent downtime and reduce maintenance costs

• **9070 Standard Accessories** Protective pouch with belt loop

• **9070 Optional Accessories** Magnet A9073, Extended Stinger A9072

9070
\$495.00



1X, Unbalance
2X, Misalignment
3X, Looseness



9080 Smart Trend Meter Analyzes, Interprets and TRENDS

• **9080 Includes:** A9081A docking cradle/USB & VibTrend standard software (up to ten assets with ten measurement points per asset), A9089 BNC/sensor/magnet and A9087 carrying case

• **9080K1 comes with:** Asset management and trending with 9080K1 and 9080K2 kits include VibTrend Pro Software for unlimited assets, ten readings per asset and 1,000 assets per route

• **9080K2 comes with:** ISO machine alarms and Bearing Damage Units (BDU) reading indicate overall machine and bearing condition

• Clear picture of 1X (unbalance), 2X (misalignment) and 3X (looseness) machine/bearing problems

VibTrend standard software gives you greater ease of use and flexibility.

Windows 7™ and 8™ compatible

• Store, analyze and report on all your vibration parameters in one place; unlimited assets with ten readings per asset.

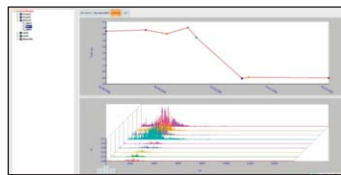
9080
\$995.00

9080 K1
\$1,495.00

9080 K2
\$2,195.00



A9082 stroboscope, tachometer and flashlight comes with 9080K1 and 9080K2 kits.



VibTrend Pro Software powerful and easy to use asset management and fault diagnosis software

Bluetooth Headset

A9080 Bluetooth® Headset

Industry approved ear defenders with built-in-Bluetooth headphones that allow you to listen to the bearing noise. You can also use with your smart phone. Comes with the 9080K2 kit and can be ordered separately.

A9080
\$595.00

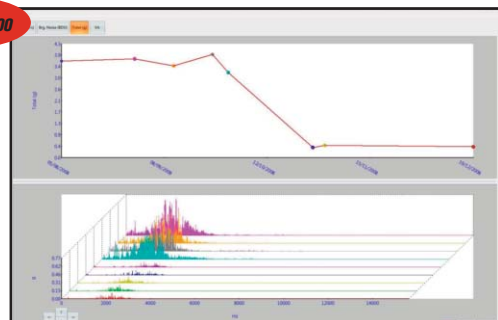


VibTrend Pro Software comes with the 9080K1 and 9080K2.

Unlimited assets.....

• All information is just a click away. Color coded alarms highlight problems. Trend lines show problems before they happen.

A9084
\$495.00





The Ultra II does it all...

• High spec CBM data collector • Dynamic 2 plane rotor balancer • Plant and asset inspections

BENEFITS

Automatically detects out of balance, misalignment, looseness and bearing defects

Predictive analysis capabilities that accurately calculate time frame to failure

Condition based monitoring analyzes bearing wear and gear degradation

Built-in single plane balancing enables correction of the most common cause of vibration. (Dual plane balancing with additional accelerometer)

FEATURES

Additional features include Inspection, Lube and remote/server database

User selectable defined envelope filters and demodulation functionality

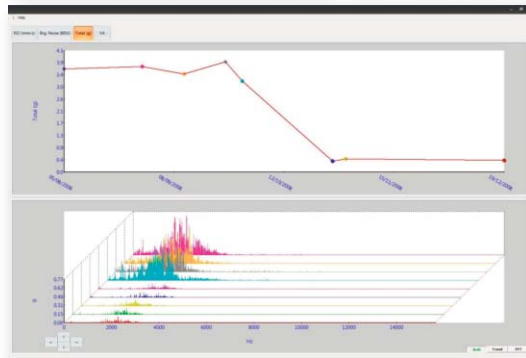
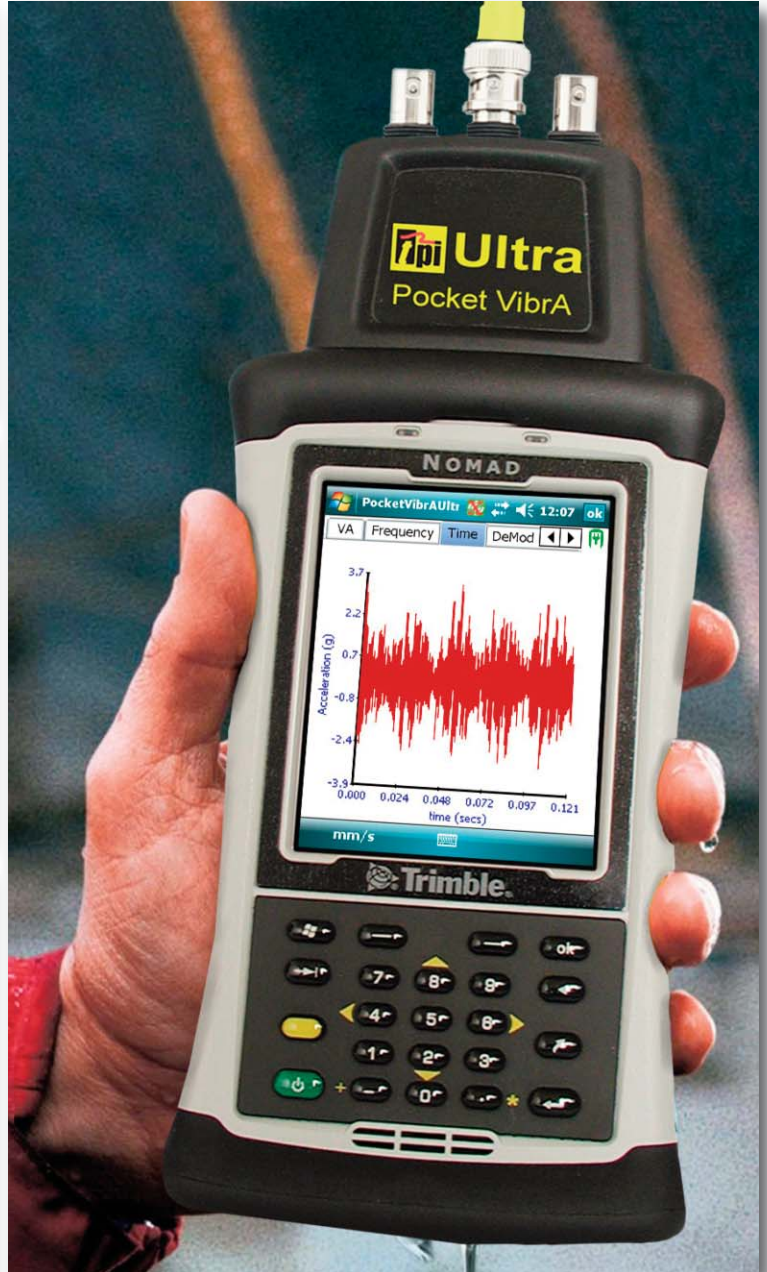
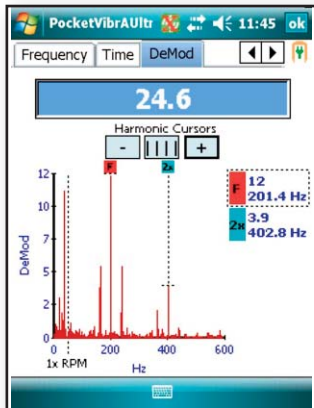
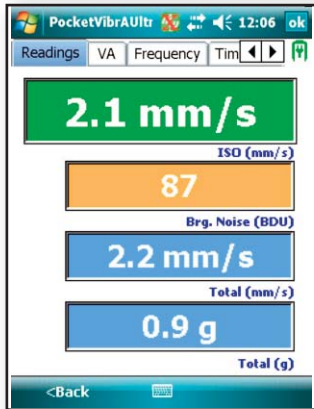
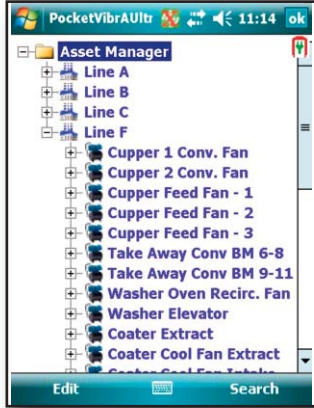
True simultaneous 3 channel capture

High resolution (0.2 Hz) frequency spectra from 2 Hz to 10 kHz

Rugged fully waterproof construction meets IP68 and MIL-STD-810F requirements.

C-Trend Software gives you greater ease of use and flexibility.

- Store, analyze and report on all your vibration, lube and process parameters (e.g. oil pressures, lube volume, temperature, run hours, etc.) in one place.
- All information is just a click away. Color coded alarms highlight problems. Trend lines show problems before they happen.
- Data can be accessed anywhere on any machine, with networking software. Plant history is everything and C-Trend turns it into useful information with the click of a mouse!



Includes C-Trend powerful and easy to use asset management and fault diagnosis software

9041 Ultra II Included:

\$7,495.00

- Tacho, accelerometer (one) and cables
- Carrying case with shoulder strap

Features	9041	9080	9070
Analyzes and displays ISO vibration levels, bearing wear, unbalance, misalignment and looseness	✓	✓	✓
Color coded display with alarm status (red, amber, and green)	✓	✓	✓
Fully zoom-able frequency spectrum	✓	✓	✓
True simultaneous three channel capture	✓	—	—
USB computer interface	✓	✓	—
C-Trend software to store analyze and report vibration, lube, and inspection parameters (temperature, oil pressures, run hours, etc.)	✓	—	—
VibTrend software for data trending and analysis	—	✓	—
Automatic reporting and email generation of alerts for any parameter	✓	✓	—
Bluetooth enabled	✓	✓	—
Bluetooth headphones (optional, p/n A9080)	—	✓	—
Strobe accessory (optional, p/n A9082)	✓	✓	—
Optional RFID asset management (RFID tags p/n A9007 required)	✓	—	—
Built-in single plane balancing	✓	—	—
Optional dual plane balancing with additional accelerometer	✓	—	—
Includes laser tachometer for balancing	✓	—	—
Accelerometer connection	BNC, uses IEPE accelerometers	BNC, uses IEPE accelerometers	Built-in with stinger (magnet optional)
Input range	+/- 50g	+/- 50g	+/- 50g
Frequency ranges	2Hz to 1KHz 2Hz to 10KHz	2Hz to 1KHz 2Hz to 10KHz	2Hz to 1KHz 2Hz to 10KHz
Frequency resolution	400, 800, 1600, 3200, 6400, 12,800, 25,600, 51,200 lines FFT	100, 800, lines FFT	100, 800 lines FFT
Displayed frequency units	Hertz (Hz), RPM, CPM	Hertz (Hz), RPM, CPM	Hertz (Hz), RPM, CPM
Displayed amplitude units	Acceleration in g Velocity in mm/s or inches/s Displacement in microns or mils	Acceleration in g Velocity in mm/s or inches/s Displacement in microns or mils	Acceleration in g Velocity in mm/s or inches/s
Dynamic range	96dB	96dB	72dB
User interface	Numeric keypad and touch screen	Keypad	Keypad
Environmental rating	IP68 Waterproof	IP67 Waterproof	IP67 Waterproof
Operating temperature	-22°F to 149°F (-30°C to 65°C)	32°F to 122°F (0°C to 50°C)	32°F to 122°F (0°C to 50°C)
Power supply	Rechargeable battery (charger included)	AA Batteries (2)	AA Batteries (2)
Battery life	20 hours typical	50 hours typical	50 hours typical
Size	8.7" x 3.7" x 1.8" (220mm x 95mm x 45mm)	8" x 2.4" x 1.3" (203mm x 61mm x 33mm)	8" x 2.4" x 1.3" (203mm x 61mm x 33mm)
Weight (unit only)	1.1lb (500g)	9.8oz (280g)	9.8oz (280g)

Test Products International, Inc.
9615 SW Allen Blvd.
Beaverton, OR 97005
503-520-9197 Fax: 503-520-1225
email: info@tpi-thevalueleader.com

Distributed By: