

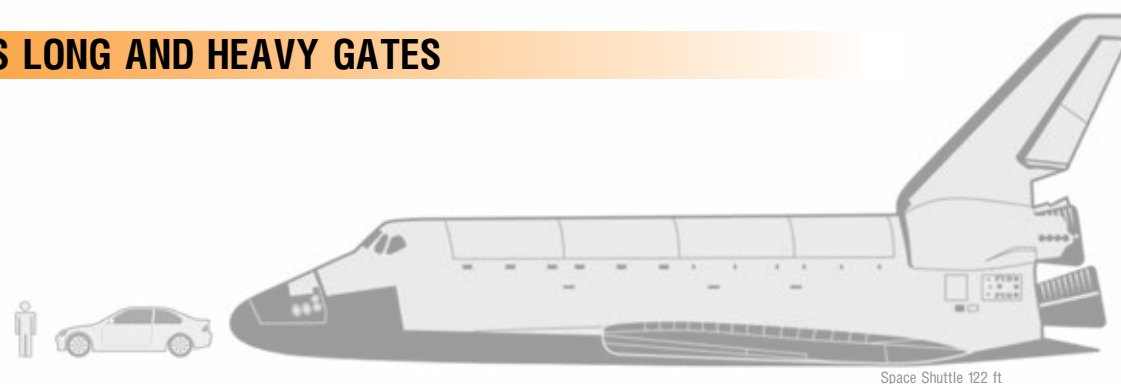
# MAXIMUM SECURITY MAXIMUM POWER

## HEAVY DUTY GATE OPERATORS

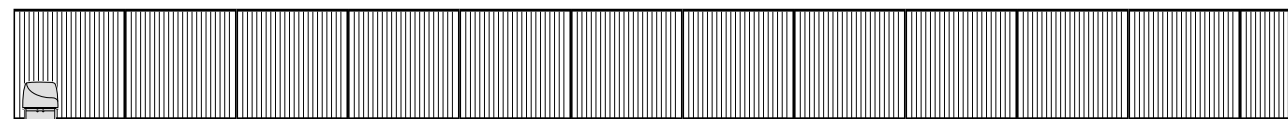
Military Facilities - Government Buildings - Airports - Seaports - Border Fences - Prisons - Loading Docks - Factories  
Infrastructure Facilities (Water Treatment, Chemical, Power Plants, Dams, etc.) or for any application where a high degree of perimeter security must be maintained.



## MOVES LONG AND HEAVY GATES



**9500 Series** up to 160ft (48.8m) and 25,000lbs (11.3 metric ton)



**9200 Series** up to 100ft (30.5m) and 8000lbs (3.6 metric ton)

## MOVE GATES FASTER

24ft (7.3m) in 12 seconds



Emergency close feature increases speed up to 6ft (1.8m)/sec  
(model 9235 only)

Close in half the time  
at 4ft (1.2m)  
per second\*

1/2

\* models 9235, 9555 and 9556 only



# Maximum GATE Security OPERATORS

**DoorKing West**  
Western Region Sales Office  
Cameron Park, CA

**DoorKing Southwest**  
Southwest Region Sales Office  
Tempe, AZ

**DoorKing Central**  
Central Region Sales Office  
Watauga, TX

**DoorKing South Central**  
South Central Region Sales Office  
Flowood, MS

**DoorKing Northwest**  
Northwest Region Sales Office  
Vancouver, WA

**DoorKing North**  
Northern Region Sales Office  
Brownsburg, IN

**DoorKing East**  
Eastern Region Sales Office  
Vineland, NJ

**DoorKing South**  
Southern Region Sales Office  
Woodstock, GA

**DoorKing Southeast**  
Southeast Region Sales Office  
Maitland, FL

**DoorKing Central Atlantic Coast**  
Mid Atlantic Region Sales Office  
Matthews, NC

Distributed by:



DOORKING, INC.

120 Glasgow Avenue, Inglewood, California 90301 U.S.A. info@doorking.com • Tel: 310-645-0023 FAX: 310-641-1586 www.doorking.com  
© 2014 All Rights Reserved. Product specifications may change without notice. Rev. 2/14



# MAXIMUM SECURITY SLIDE GATE OPERATORS



# 9200 Series

For gates up to 100ft (30.5m) / 8000lbs (3.6 metric ton)

MORE APPLICATIONS  
**MAXIMUM CHOICES**  
WITH SPEED CONTROLS

## 9200 SERIES:

Six models to choose from.

Front, center or rear mount without costly or time consuming field modifications.

Heavy-duty direct-driven gearbox running in a continuous oil bath.



# 9500 Series

For gates up to 160ft (48.8m) / 25,000lbs (11.3 metric ton)

THE WORKHORSE OF  
**MAXIMUM SECURITY**  
WITH RACE HORSE FEATURES

## 9500 SERIES:

Five models to choose from.

Available with 10 ga. heavy-duty steel housing.

Electronic breaking (high speed operators only).

User can set the speed of the gate from 1/2 to 4 feet/sec.

(.15 to 1.2 m/sec.) (dependent on operator model).



	9200 Series	9500 Series
Gate Length Maximum	100 ft (30.5m)	160 ft (48.8m)
Gate Weight Maximum	8000 Lb. (1.36 m. ton)	25000 Lb. (11.3 m. ton)
* Soft Start/Stop	✓	✓
* Adjustable Speed	✓	✓
Loop Detector Ports	✓	✓
Warn Before Operate	✓	✓
Anti Tailgating	✓	✓
Partial Open	✓	✓
Gate Tracker	✓	✓
* except 9210		

Model	Usage		Gate Maximums		Features			Power
	Ind	Max Sec	Length	Weight	Maximum Speed	Anti-Tailgating	Partial Open	HP
9210	✓		100 Ft. (30.5m)	3000 Lb. (1.36 m. ton)	1 Ft/Sec (.3 m/sec)	✓	✓	1
9220	✓	✓	100 Ft. (30.5m)	2000 Lb. (9 m. ton)	2 Ft/Sec (.6 m/sec)	✓	✓	2
9230	✓	✓	100 Ft. (30.5m)	5000 Lb. (2.27 m. ton)	2 Ft/Sec (.6 m/sec)	✓	✓	3
9235	✓	✓	100 Ft. (30.5m)	3000 Lb. (1.36 m. ton)	4 Ft/Sec (1.2 m/sec)	✓	✓	3
9240/45	✓	✓	100 Ft. (30.5m)	8000 Lb. (3.6 m. ton)	2 Ft/Sec (.6 m/sec)	✓	✓	3
9530	✓	✓	160 Ft. (48.7m)	10,000 Lb. (4.5 m. ton)	2 Ft/Sec (.6 m/sec)	✓	✓	3
9550		✓	160 Ft. (48.7m)	20,000 Lb. (9 m. ton)	1 Ft/Sec (.3 m/sec)	✓	✓	5
9555		✓	160 Ft. (48.7m)	10,000 Lb. (4.5 m. ton)	4 Ft/Sec (1.2 m/sec)	✓	✓	5
9575		✓	160 Ft. (48.7m)	25,000 Lb. (11.3 m. ton)	2 Ft/Sec (.6 m/sec)	✓	✓	7.5

## 1. Control Vehicle Access

- Special anti-tailgating and adjustable partial open features help to reduce unauthorized vehicle access.
- Emergency close feature on Model 9235 only.



## 2. Speed

- Adjustable speed motor drive; 1/2 - 2 ft/sec. (.15 to .6 m/sec)
- Maximum gate speed of up to 4 ft/sec. (1.2m/sec.) on Models 9235, 9555 and 9556 only.
- Slow start / slow stop. (Excludes Model 9210)



## 3. Large Gates

- Up to 160 feet (48.8m) and 25,000 lbs. (11.3 metric ton)



## 4. Direct Chain Drive

- High strength roller chain.
- Provides a no slip mechanical connection to the gate.



## 5. Heavy Duty

- Up to 7.5 Horse Power available.
- Heavy-duty steel mounting pedestal.



# Key Features

## Mechanical

- Adjustable speed control circuits 1/2 feet to 4 feet (.15 to 1.2 m) per second (depending on model)
- Emergency close feature available at 6 feet/second (1.8m/sec.). Model 9235 only
- Solid state motor control - no relay contacts to wear out or burn
- Adjustable partial open limit
- Anti-tailgating
- Tamper proof direct driven limit switches for precise gate control
- Soft Start / Soft Stop operation (excludes Model 9210)
- Ports for plug-in open and reverse loop detectors (DKS loop detectors only)

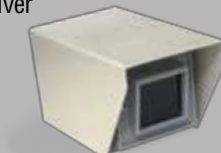
- Selectable stop/reverse loop function
- Warn before operate function
- Built-in power and alarm reset switches
- 115 volt convenience outlets
- Gate Tracker reporting output provides operator data to access control system (DKS 1833, 1835, 1837, 1838 only)
- Fail-secure operation includes crank for manual operation
- External obstruction sensing devices must be used with these operators

# Accessories

## ENTRAPMENT PREVENTION DEVICES

### Photo-eyes

- Photo-reflective beam has a scan distance of 30 ft. (9.1m)
- Includes reflector and mounting bracket
- Thru-beam photocell has a scan distance of 65 ft. (19.8m)
- Separate sender and receiver
- Infrared beam
- Hooded metal enclosure



## Loop Detectors

Plug-in detectors (DKS only) and hard wired detectors. Single and dual channel. Pre-fabricated loops available or form your own loops.



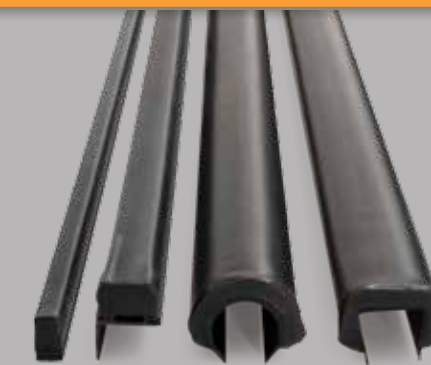
## Control Stations

Gate control stations provide complete manual control. The unique logic inputs found on DKS gate operators require only 3 wires for connection to a 3-button control station.



## Reversing edges

- A variety of edge styles for different gates
- Mounting channels included
- 2-wire edges can be hard wired



## Slide Gate Accessories

Chain, chain trays, guide rollers, mounting pedestals, v-wheels, accessory transformers, heater kits, and other accessories for gate operation and installation.



## Traffic Control

Warning signs, traffic signals, traffic control spikes and auto-spikes systems.



## Lock Boxes

Provide Fire Department and Postal Carrier access through automated gates or doors for emergency or postal personnel.

