

Security and Communication Solutions 2016

VIKING

Analog and VoIP Solutions

ACCESS CONTROL 30-43

AREA OF REFUGE 11

CLOCK SYSTEMS 21

DIALERS 14-15

EMERGENCY PHONES 4-10

ENCLOSURES 32-33

EWP 31

PAGING PRODUCTS 16-21

PROBLEM SOLVERS 22-29

TELEPHONES 12-13

Call: 715-386-8861

Email: info@vikingelectronics.com

Visit: www.vikingelectronics.com

All Viking Products are **DESIGNED,**
MANUFACTURED, and **SUPPORTED** in the USA!



Product Index - Alphabetical by Viking Model Number

Model	DOD	Pg	Model	DOD	Pg	Model	DOD	Pg	Model	DOD	Pg	Model	DOD	Pg
25AE	498	19	DNA-510	492	20	E-1600-65A	215	6	E-50-WH	191	42	K-1200	182	37
300AE	497	19	DVA-1003B	125	25	E-1600-65A-EWP	215	6	E-50-WH-EWP	191	42	K-1200-EWP	182	37
30AE	498	19	DVA-2WA	110	25	E-1600-65-IP	255	6	E-60-BK	206	43	K-1205	183	37
35AE	498	19	DVA-3003	127	25	E-1600-65-IPEWP	255	6	E-60-BK-EWP	206	43	K-1205-EWP	183	37
40AE	498	19	DVA-500A	115	25	E-1600A	215	6	E-60-BK-IP	250	43	K-1500-6A	352	13
ACA-1A	005	23	DVA-LPA	128	23	E-1600A-AST2EWP	217	6	E-60-BK-IP-EWP	250	43	K-1500-7	352	13
AES-2000F	202	39	DVA-TNT	129	23	E-1600A-AST-EWP	217	6	E-60-BN	206	43	K-1500-E	220	23
AES-2000S	202	39	E-10A	210	42	E-1600A-BLT2EWP	217	6	E-60-BN-EWP	206	43	K-1500-EHFA	220	23
AES-2005F	204	39	E-10A-EWP	210	42	E-1600A-BLT-EWP	217	6	E-60-BN-IP	250	43	K-1500P-D	355	12
AES-2005S	204	39	E-10-IP	248	42	E-1600A-EWP	215	6	E-60-BN-IP-EWP	250	43	K-1500P-D ASH	355	12
AR-1	105	25	E-10-IP-EWP	248	42	E-1600A-GT-EWP	218	7	E-60-SS	206	43	K-1500P-W	355	12
ARS-DLB100	235	11	E-1600-02A	215	7	E-1600A-MK-GNP	227	33	E-60-SS-EWP	206	43	K-1500P-W ASH	355	12
ARS-DRB100	235	11	E-1600-02A-EWP	215	7	E-1600AST2IPEWP	249	6	E-60-SS-IP	250	43	K-1600-EHFA	215	8
ARS-IB100	235	11	E-1600-02-IP	255	7	E-1600-ASTIPEWP	249	6	E-60-SS-IP-EWP	250	43	K-1700-3	157	36
ARS-LR100	235	11	E-1600-02-IPEWP	255	7	E-1600A-TP2-EWP	218	7	E-60-WH	206	43	K-1700-3-BN	157	36
ARS-TB100	235	11	E-1600-03B	215	6	E-1600A-TP-EWP	218	7	E-60-WH-EWP	206	43	K-1700-3-BN-EWP	157	36
BLK-4	654	27	E-1600-03B-EWP	215	6	E-1600BLT2IPEWP	249	6	E-60-WH-IP	250	43	K-1700-3-EWP	157	36
BLK-4-EWP	654	27	E-1600-03-IP	255	6	E-1600-BLTIPEWP	249	6	E-60-WH-IP-EWP	250	43	K-1700-BN-IP	253	36
C-1000B	168	35	E-1600-03-IPEWP	255	6	E-1600-GT-IPEWP	255	7	E-65-BK	203	43	K-1700-BN-IPEWP	253	36
C-200	169	41	E-1600-20A	215	7	E-1600-IP	255	6	E-65-BK-EWP	203	43	K-1700-IP	253	36
C-2000B	156	41	E-1600-20A-EWP	215	7	E-1600-IP-EWP	255	6	E-65-BN	203	43	K-1700-IP-EWP	253	36
C-250	172	41	E-1600-20-IP	255	7	E-1600-TP2IPEWP	255	7	E-65-BN-EWP	203	43	K-1705-3	159	36
C-3000	162	37	E-1600-20-IPEWP	255	7	E-1600-TP-IPEWP	255	7	E-65-SS	203	43	K-1705-3-BN	159	36
C-4000	164	37	E-1600-22-IP	255	8	E-20B	210	42	E-65-SS-EWP	203	43	K-1705-3-BN-EWP	159	36
C-500	177	41	E-1600-22-IPEWP	255	8	E-20B-EWP	210	42	E-65-WH	203	43	K-1705-3-EWP	159	36
CL-A12	466	21	E-1600-30A	215	9	E-20-IP	248	42	E-65-WH-EWP	203	43	K-1705-BN-IP	254	36
CL-A16	466	21	E-1600-30A-EWP	215	9	E-20-IP-EWP	248	42	E-70-BK	207	43	K-1705-BN-IPEWP	254	36
CL-D2	466	21	E-1600-30-IP	255	9	E-30	212	9,42	E-70-BK-EWP	207	43	K-1705-IP	254	36
CL-D4	466	21	E-1600-30-IPEWP	255	9	E-30-EWP	212	9,42	E-70-BN	207	43	K-1705-IP-EWP	254	36
CL-DMA12	466	21	E-1600-32-IP	255	8	E-30-IP	248	9,42	E-70-BN-EWP	207	43	K-1770-3	275	36
CL-DMA16	466	21	E-1600-32-IPEWP	255	8	E-30-IP-EWP	248	9,42	E-70-SS	207	43	K-1770-3-BN	275	36
CL-DMD2	466	21	E-1600-45A	215	6	E-30-PT	214	9	E-70-SS-EWP	207	43	K-1770-3-BN-EWP	275	36
CL-DMD4	466	21	E-1600-45A-EWP	215	6	E-30-PT-EWP	214	9	E-70-WH	207	43	K-1770-3-EWP	275	36
CL-RFT	466	21	E-1600-45-IP	255	6	E-32-IP	248	42	E-70-WH-EWP	207	43	K-1770-BN-IP	257	36
CL-SMD2	466	21	E-1600-45-IPEWP	255	6	E-32-IP-EWP	248	42	E-75-BK	208	43	K-1770-BN-IPEWP	257	36
CL-SMD4	466	21	E-1600-50A	215	8	E-35	178	9	E-75-BK-EWP	208	43	K-1770-IP	257	36
CL-WGA12	466	21	E-1600-50A-EWP	215	8	E-35-EWP	178	9	E-75-BN	208	43	K-1770-IP-EWP	257	36
CL-WGA16	466	21	E-1600-50-IP	255	8	E-35-IP	251	9	E-75-BN-EWP	208	43	K-1775-3	280	36
CL-WGD4	466	21	E-1600-50-IPEWP	255	8	E-35-IP-EWP	251	9	E-75-SS	208	43	K-1775-3-BN	280	36
CPC-1	442	24	E-1600-52A	215	8	E-40-BK	187	42	E-75-SS-EWP	208	43	K-1775-3-BN-EWP	280	36
CPC-4	444	24	E-1600-52A-EWP	215	8	E-40-BK-EWP	187	42	E-75-WH	208	43	K-1775-3-EWP	280	36
CTG-1	460	20	E-1600-52-IP	255	8	E-40-BN	187	42	E-75-WH-EWP	208	43	K-1775-BN-IP	258	36
CTG-2A	464	21	E-1600-52-IPEWP	255	8	E-40-BN-EWP	187	42	ERAM-4M	854	39	K-1775-BN-IPEWP	258	36
D10	158	34	E-1600-53-IP	255	8	E-40-SS	187	42	ERAM-60	813	25	K-1775-IP	258	36
D22	158	34	E-1600-53-IPEWP	255	8	E-40-SS-EWP	187	42	ES-1	193	38	K-1775-IP-EWP	258	36
D32	158	34	E-1600-55A	215	7	E-40-WH	187	42	ES-3	195	39	K-1900-3	312	37
D44	158	34	E-1600-55A-EWP	215	7	E-40-WH-EWP	187	42	EV-1	135	23	K-1900-30	300	14
D56	158	34	E-1600-55-IP	255	7	E-50-BK	191	42	FAXJ-1000	261	26	K-1900-4	315	14
D6	158	34	E-1600-55-IPEWP	255	7	E-50-BK-EWP	191	42	FBI-1A	465	18	K-1900-5	317	14
DB40-BN	189	34	E-1600-60A	215	6	E-50-BN	191	42	FXI-1	494	18	K-1900-6	360	12
DB40-WH	189	34	E-1600-60A-EWP	215	6	E-50-BN-EWP	191	42	GLS-12	570	28	K-1900-6-IP	363	13
DLE-200B	605	26	E-1600-60-IP	255	6	E-50-SS	191	42	HD-1	405	23	K-1900-6-IP-EWP	363	13
DLE-300	607	26	E-1600-60-IPEWP	255	6	E-50-SS-EWP	191	42	HF-3W	470	18	K-1900-7	364	13

FREE American Product Support

When you call Viking for product support, you'll be talking to a professional located right here in our Hudson, WI plant, not half way around the world. American product support, located right here in America. What a concept!

Product Support is available to professional installers who have purchased a Viking product through an authorized distributor.

Call: 715-386-8666

Monday to Friday
8:00am to 5:00pm Central Time

Product Support E-mail
ProductSupport@vikingelectronics.com

Two Year Limited Warranty

We know you buy Viking products because they do the job and because we support you with the best-in-industry U.S. based technical support. We also give you another reason to choose Viking products – a Two Year Limited Warranty. We don't skimp on coverage, it's just like our standard one year warranty, only twice as long at no cost to you.

Use our longer warranty as a selling point when you're quoting Viking products. Or consider the value of a longer warranty when you're evaluating proposals from other suppliers. Either way, it's a win-win situation.

For a copy of the Viking Two Year Limited Warranty, go to www.vikingelectronics.com and enter 101 in the Document On Demand (DOD) box at the top of the page.

What is "Document On Demand"?

Viking's online "Document On Demand" (DOD) makes it quick and easy for you to get the information you need. Simply enter a DOD number in the box at the top of Viking's homepage for a direct link to a PDF. All Viking catalogs and literature have DOD numbers for each product. We also assign DOD numbers for important information such as Application Notes, Warranty, etc.



Product Categories

Model	DOD	Pg
K-1900-7-EWP	364	13
K-1900-7-IP	363	13
K-1900-7-IP-EWP	363	13
K-1900-8	362	13
K-1900-8-EWP	362	13
K-1900-8-IP	361	13
K-1900-8-IP-EWP	361	13
K-1900-9	321	14
K-1900D-2	360	12
K-1900D-2 ASH	360	12
K-1900W-2	360	12
K-1900W-2 ASH	360	12
K-2000-DVA	303	15
K-202-DVA	305	15
K-6000-DVA	307	15
K-600F	476	18
LC-3	223	23
LC-6	245	10
LC-8	225	23
LDB-1	406	24
LDB-2	408	24
LDB-3	409	24
LLA-1	615	29
LLA-4	620	29
LM-1A	662	27
LM-24D	670	23
LM-24S	670	23
LPL-1	640	27
LPR-1	550	24
LS-911	238	10
LSD-2	262	10
LSR-1	230	10
LV-1K	246	10
M2W	480	18
MTG-10	482	24
NS-1	540	23
PA-15	486	16
PA-2A	485	16
PA-30	489	16
PA-60	493	16
PAN-1	145	24
PB-1	233	10
PB-100	232	39
PC-7	560	23
PF-6A	680	28
PI-1A	491	18
PJ-14	560	23
PNL40	188	34
PNL50	192	34
PNL60	209	34
PNL65	201	34
PNL70	200	34

Model	DOD	Pg
PNL75	211	34
PNL-VCAM-2-BN	190	30
PNL-VCAM-2-SS	190	30
PRX-1	221	38
PRX-2	219	38
PRX-3	228	38
PRX-3-MK-GNP	229	38
PRX-3-MK-VEGNP	229	38
PRX-4	199	38
PRX-C	198	38
PRX-C-ISO	198	38
PRX-FOB	198	38
PS-48-RGA	515	29
PTR-1	438	26
Q170600 RINGER	834	12
RAD-1A	410	22
RAD-AMP	415	22
RC-2A	160	40
RC-3	165	40
RC-4A	582	40
RG-10A	420	29
RG-204	417	28
RG-212	419	28
RG-224	418	28
RG-4	416	28
SA-1H	526	17
SA-1S	525	17
SA-25	520	17
SA-IR	527	17
SA-TBA	534	19
SA-X12	529	17
SC-911	236	27
SL-2	242	27
SL-2-EWP	242	27
SLP-1	478	20
SLP-4	479	20
SO-24 AK	819	23
SO-24A	690	23
SQRG-12	060	23
SR-1	477	19
SRC-1	176	40
SR-IP	577	19
SV-5W	488	19
TBB-1B	632	29
TDR-1	421	24
TG-1	560	23
TG-2	560	23
TMS-12A	070	23
TR-1	705	22
VCAM-1	190	30
VCAM-11R	190	30
VCAM-2-BN	190	30

Model	DOD	Pg
VCAM-2-SS	190	30
VE-3x5	424	33
VE-5x10	424	33
VE-5x10-PNL	424	33
VE-5x10-PNL-SS	424	33
VE-5x10-SS	424	33
VE-5x5	424	33
VE-5x5-PNL	424	33
VE-5x5-PNL-SS	424	33
VE-5x5-SS	424	33
VE-6x7	424	33
VE-6x7-PNL	424	33
VE-6x7-PNL-SS	424	33
VE-6x7-SS	424	33
VE-9x12B-0	413	32
VE-9x12B-1	413	32
VE-9x12B-2	413	32
VE-9x12MK-1	413	32
VE-9x12MK-2	413	32
VE-9x12R-0	413	32
VE-9x12R-1	413	32
VE-9x12R-2	413	32
VE-9x12Y-0	413	32
VE-9x12Y-1	413	32
VE-9x12Y-2	413	32
VE-9x20B	413	32
VE-9x20B-0	413	32
VE-9x20MK	413	32
VE-9x20R	413	32
VE-9x20R-0	413	32
VE-9x20Y	413	32
VE-9x20Y-0	413	32
VE-ARSW	237	11
VE-GNP	424	33
VE-GNP-2	424	33
VE-GNP-IG	424	33
VE-GNP-SS	424	33
VE-LIGHT	428	33
VE-PBL	413	32
VE-RMB	431	23
VE-SPG	413	32
VR-1B	697	27
W-1000	170	35
W-1000-EWP	170	35
W-2000A	170	35
W-2000A-EWP	170	35
W-3000	170	35
W-3000-EWP	170	35
W-3005	181	35
W-3005-EWP	181	35
ZPI-4	499	19

ACCESS CONTROL 30-43

Analog and VoIP Options
Apartment Entry
CCTV Options

Door Entry / Control
Proximity Card Options
Varied Styles / Colors

AREA OF REFUGE AND POOL PHONES 11

Poolside Emergency Phones
Signage

Line Concentrator

CLOCK SYSTEMS 21

Analog and Digital Wireless Clocks
Master Clock Controller
RF Transmitter / Repeater

DIALERS 14-15

Alarm Dialers
Automated Message Delivery Systems
Hot Line Dialers

EMERGENCY PHONES 4-10

ADA Compliant Phone
Analog and VoIP Options
Elevator Phones

Line Sharing
Line Verification
Panic Button

ENCLOSURES 32-33

Blank Panels
LED Illumination
Outdoor Enclosures

Pedestals
Surface Mount Boxes

ENHANCED WEATHER PROTECTION 31

Added protection for products installed in harsh / outdoor environments

PAGING PRODUCTS 16-21

Amplifiers
Analog and VoIP Options
Self-Amplified Systems

Mass Notification
Zone Control
Night Bell

PROBLEM SOLVERS 22-29

Talk Battery / Ring Boosters
Loud Ringer / Line Simulators
Loop / Ring / CPC Detectors

Remote Access Devices
Tone Generators
Digital Announcers

TELEPHONES 12-13

Courtesy Phones
Hot Line Phones
Panel Phones

No-Dial Phones
Custom Colors
Vandal Resistant Phones



How to Contact Us:

Call: 715-386-8861
Email: info@vikingelectronics.com
Visit: www.vikingelectronics.com

ASK VIKING FIRST!
If we don't make what you need we'll refer you to someone who does.

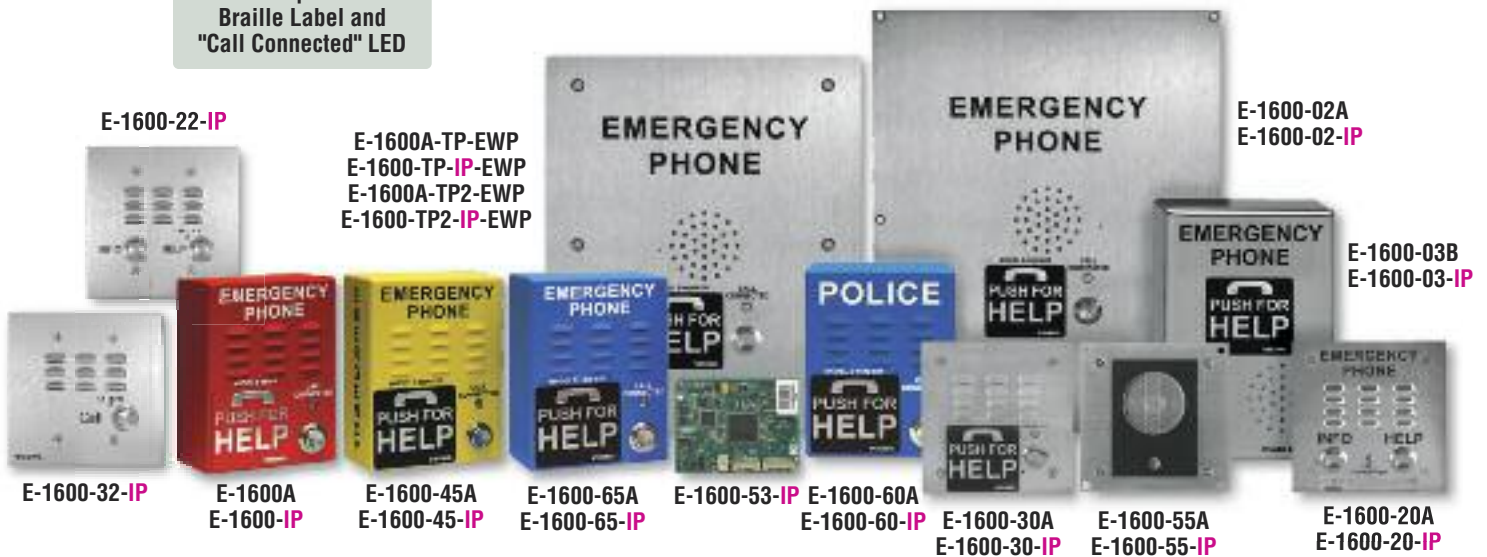


All Viking Products are Designed, Manufactured and Supported in the USA!

ADA Compliant Analog and VoIP Emergency and Elevator Phones

- Superior Automatic Noise Cancelling Design for Loud Environments
- Complies with ASME A17.1 Elevator Code when used with LV-1K (page 10)
- Phone Numbers and I.D. Announcement Stored in Non-Volatile Memory - No Battery Back-Up Required
- Automatically Dials 4 Additional Numbers (1 to 20 Digits) on Busy or No Answer

ADA Compliant with Braille Label and "Call Connected" LED



Analog: 1600A Series

- Analog PABX, CO Line or FXS Port powered
- 2 Wire Installation
- Compatible with Central Station Monitoring (CSM)
- 16 second I.D. Announcement
- Temperature range -15° to 130°F

The **1600A Series** Emergency Phones are designed to provide quick and reliable access to emergency personnel via two-way, handsfree voice communication over a telephone network. The **1600A Series** have braille labels and meet ADA requirements for elevator telephones. Compatible with analog PABX, CO line, FXS port and ringdown circuits.

The **1600A Series** can be programmed on-site or remotely from a touch tone phone. All parameters, phone numbers, location numbers, and voice announcement are stored in non-volatile E² memory, batteries are not required for memory retention.

When the "Push for Help" button is pressed, the **1600A Series** phone goes off-hook, and the built-in touch tone dialer calls the pre-programmed 1 to 20 digit number. The "Call Connected" LED flashes during dialing. In the event that the line is busy or there is no answer, the unit can automatically dial up to 4 more numbers. When the call is answered, the **1600A Series** phone lights the "Call Connected" LED steady and sends a field-programmed 1 to 20 digit touch tone number or 16 second voice announcement indicating the location of the emergency phone.

Use the **PB-100** (see page 39) to remotely program and poll emergency phones as to their working status.

VoIP: 1600-IP Series

- Built-In 2 Amp Relay for Controlling Lights, Strobes, Door Strikes, Gate Openers, Door Chimes, etc.
- Power over Ethernet (PoE) Class 1, <4 Watts
- VoIP SIP based Protocol
- 28 Second I.D. Announcement
- Temperature range -30° to 130°F

The **1600-IP Series** Emergency Phones are ADA compliant and have all the features required in an emergency or door access phone. Plus, they're among the most affordable installer-friendly products on the market. The **1600-IP Series** phones work with most SIP based VoIP phone systems, see our compatibility list – **DOD# 944**.

Run CAT 5e Ethernet cable to one location and connect to the phone. Power the **1600-IP Series** phone using the VoIP phone system's Power over Ethernet (PoE), or add an inexpensive PoE injector. Then program all the units with Viking's PC-based software.

To convert your existing Viking analog phones to VoIP, use Viking's **E-1600-53-IP** conversion kit (see page 8).

Programming is just as easy. The software immediately identifies each connected phone. Just assign a unique name and propagate the settings out to each phone with a push of a button – no need to continually re-enter the common parameters for every phone in the system. That's a huge time-saver over programming methods used by other IP phone manufacturers. And, since Viking's software maintains a complete phone database, you can reprogram a replacement device the same way. Just click on the phone's name and press send. You never have to manually re-enter the information.

Installation requires the assistance of a network administrator/I.T. technician





Analog: E-1600A **See Page 6**
VoIP: E-1600-IP
HxWxD: 5.25" x 4.0" x 2.0"
Mounting: Surface mount
Description: 16 gauge steel with textured red powder paint



Analog: E-1600-45A **See Page 6**
VoIP: E-1600-45-IP
HxWxD: 5.25" x 4.0" x 2.0"
Mounting: Surface mount
Description: 16 gauge steel with textured yellow powder paint



Analog: E-1600-60A **See Page 6**
VoIP: E-1600-60-IP
HxWxD: 5.25" x 4.0" x 2.0"
Mounting: Surface mount
Description: 16 gauge steel with textured blue powder paint and "POLICE" verbiage



Analog: E-1600-65A **See Page 6**
VoIP: E-1600-65-IP
HxWxD: 5.25" x 4.0" x 2.0"
Mounting: Surface mount
Description: 16 gauge steel with textured blue powder paint



Analog: E-1600-55A **See Page 7**
VoIP: E-1600-55-IP
HxWxD: 5.0" x 5.0" x 2.0"
Description: Universal emergency phone kit to install behind elevator panels or when a custom panel is used



VoIP: E-1600-53-IP **See Page 8**
Description: 1600-IP board PCB only kit. Can be used to convert any analog Viking 1600A Series phone to a VoIP version



Analog: E-1600-20A **See Page 7**
VoIP: E-1600-20-IP
HxWxD: 5.0" x 5.0" x 2.25"
Mounting: Flush mount with included rough-in box (will not fit in a double gang box), or surface mount with a **VE-5x5**
Description: Two button, 14 gauge marine grade 316 stainless steel with #4 brushed finish, T-10 Torx Security Screws



VoIP: E-1600-22-IP **See Page 8**
HxWxD: 5.0" x 5.0" x 2.25"
Mounting: Flush mount in a standard double gang electrical box or surface mount with a **VE-5x5**
Description: Two button, 14 gauge marine grade 316 stainless steel with #4 brushed finish, T-10 Torx Security Screws



Analog: E-1600-30A **See Page 9**
VoIP: E-1600-30-IP
HxWxD: 5.0" x 5.0" x 2.25"
Mounting: Flush mount with included rough-in box (will not fit in a double gang box). or surface mount with a **VE-5x5**
Description: 14 gauge marine grade 316 stainless steel with #4 brushed finish, T-10 Torx Security Screws



VoIP: E-1600-32-IP **See Page 8**
HxWxD: 5.0" x 5.0" x 2.25"
Mounting: Flush mount in a standard double gang electrical box or surface mount with a **VE-5x5**
Description: 14 gauge marine grade 316 stainless steel with #4 brushed finish, T-10 Torx Security Screws



Analog: E-1600-50A **See Page 8**
VoIP: E-1600-50-IP
Description: Single button parts kit without chassis



Analog: E-1600-52A **See Page 8**
VoIP: E-1600-52-IP
Description: Two button parts kit without chassis

Analog: K-1600-EHFA **See Page 8**
HxWxD: 9.875" x 6.86" x 2.1"
Mounting: Recess mount in a standard elevator phone box measuring: 10.0" x 7.0" x 3.0"
Description: 14 gauge aluminum with red powder paint.



Analog: E-1600-02A
VoIP: E-1600-02-IP
HxWxD: 13.0" x 10.5" x 2.0"
Mounting: Flush mount
Description: 12 gauge marine grade 316 stainless steel with #4 brushed finish

See Page 7



Analog: E-1600A-TP-EWP
VoIP: E-1600-TP-IPEWP
HxWxD: 11.75" x 9.5" x 2.0"
Mounting: Flush mount
Description: Direct physical replacement for Talk-A-Phone model ETP-400V

See Page 7



Analog: E-1600A-TP2-EWP
VoIP: E-1600-TP2IPEWP
HxWxD: 11.75" x 9.5" x 2.0"
Mounting: Flush mount
Description: Direct physical replacement for Talk-A-Phone model ETP-400DV

See Page 7



Analog: E-1600A-GT-EWP
VoIP: E-1600-GT-IPEWP
HxWxD: 12.0" x 10.0" x 2.0"
Mounting: Flush mount
Description: Direct physical replacement for GAI-TRONICS Red Alerts 397-700 or 397-701

See Page 7



Analog: E-1600-03B
VoIP: E-1600-03-IP
HxWxD: 7.22" x 5.36" x 1.55"
Mounting: Surface mount
Description: 14 gauge marine grade 316 stainless steel with #4 brushed finish

See Page 6

Emergency Phones

ADA Compliant with Braille Label and “Call Connected” LED

- For Features and Operation refer to 1600A or 1600-IP Series on page 4
- Material: 0.062" 16 gauge steel, powder painted
- Mounting: Surface mount to walls, posts, single gang boxes or recess mount in elevator phone boxes
- Dimensions: 5.25" x 4.0" x 2.0"



E-1600A
E-1600-IP



E-1600-45A
E-1600-45-IP



E-1600-60A
E-1600-60-IP



E-1600-65A
E-1600-65-IP

Analog Model	DOD #	EWP
E-1600A	215	Available
E-1600-45A	215	
E-1600-60A	215	
E-1600-65A	215	

VoIP Model	DOD #	EWP
E-1600-IP	255	Available
E-1600-45-IP	255	
E-1600-60-IP	255	
E-1600-65-IP	255	

What is EWP? When installing Viking products outdoors, always use the EWP version, see page 31

42" Tower Phone with LED Strobe and Steady-on Beacon

ADA Compliant with Braille Label and “Call Connected” LED
High Intensity Flashing LED Strobe with Steady-on-Beacon

- For Features and Operation refer to 1600A or 1600-IP Series on page 4
- 4 programmable flash patterns
- 6 programmable brightness settings
- Maximum strobe power run on Cat-5 using 3 pair = 325 ft.
- Surface mount to rigid wall or post
- Connections: Color-coded wires with gel-filled butt connectors
- **Enhanced Weather Protection (EWP) comes standard – see page 31**
- Enclosure: 0.125" thick aluminum, 3.0" x 6.0" (76.2 mm x 152.4 mm) tube, powder painted high-visible yellow
- Phone: 0.074" thick 14 gauge 316 marine grade stainless steel faceplate with stainless steel button
- Strobe: Vandal resistant polycarbonate plastic
- Power supply included for strobe
- Two-button versions available with “Info” and “Help” buttons – Models: E-1600A-BLT2EWP, E-1600A-AST2EWP, E-1600BLT2IPEWP and E-1600AST2IPEWP

Analog Model	DOD #	EWP
E-1600A-BLT-EWP	217	Standard
E-1600A-BLT2EWP	217	
E-1600A-AST-EWP	217	
E-1600A-AST2EWP	217	

VoIP Model	DOD #	EWP
E-1600-BLT IPEWP	249	Standard
E-1600BLT2IPEWP	249	
E-1600-AST IPEWP	249	
E-1600AST2IPEWP	249	



What is EWP? When installing Viking products outdoors, always use the EWP version, see page 31

Vandal Resistant Handsfree Emergency Phone

ADA Compliant with Braille Label and “Call Connected” LED

- For Features and Operation refer to 1600A or 1600-IP Series on page 4
- Material: 0.074" 14 gauge brushed 316 marine grade stainless steel
- Surface mount to walls, posts, single gang boxes or recess mount in elevator phone boxes
- Dimensions: 7.22" x 5.36" x 1.55"

Analog Model	DOD #	EWP
E-1600-03B	215	Available

VoIP Model	DOD #	EWP
E-1600-03-IP	255	Available

What is EWP? When installing Viking products outdoors, always use the EWP version, see page 31



Vandal Resistant Handsfree Emergency Phone

ADA Compliant with Braille Label and “Call Connected” LED

- For Features and Operation refer to 1600A or 1600-IP Series on page 4
- Material: .105” 12 gauge brushed 316 marine grade stainless steel
- Dimensions: 13.0” x 10.5” x 2”
- Mounting: Flush mount in elevator cabs, stairwells, hallways, etc.

Analog Model	DOD #	EWP	VoIP Model	DOD #	EWP
E-1600-02A	215	Available	E-1600-02-IP	255	Available

What is EWP? When installing Viking products outdoors, always use the EWP version, see page 31



Two Button 5” x 5” ADA Stainless Steel Emergency Phone

- For Features and Operation refer to 1600A or 1600-IP Series on page 4
- Material: 14 gauge brushed marine grade 316 stainless steel
- Mounting: Flush mount with included plastic rough-in-box, surface mount with optional VE-5x5 enclosure (Page 33)
- Two wire installation – analog PABX, CO line or FXS port powered (analog only)
- Dimensions: 5.0” x 5.0” x 2.25”
- Second button dials up to 3 (analog) or 5 (IP) additional numbers for general info or directions

Analog Model	DOD #	EWP	VoIP Model	DOD #	EWP
E-1600-20A	215	Available	E-1600-20-IP	255	Available

What is EWP? When installing Viking products outdoors, always use the EWP version, see page 31



Replacement Phone for Code Blue, GAI-Tronics and Talk-A-Phone Applications

ADA Compliant with Braille Label and “Call Connected” LED

- For Features and Operation refer to 1600A or 1600-IP Series on page 4
- Direct replacement for select GAI-Tronics and Talk-A-Phone panel phones
- Replacing Code Blue tower phones requires redrilling and tapping
- Material: 12 gauge brushed marine grade 316 stainless steel
- Mounting: Flush mount to Code Blue, GAI-Tronics and Talk-A-Phone towers, wall mounts, boxes and pedestals
- Analog PABX, CO line or FXS port powered emergency phone (BLK-4 control module requires power)
- Enhanced Weather Protection (EWP) standard – See page 31
- Two button version dials up to 3 (analog) or 5 (IP) additional numbers for general info or directions

Analog Model	DOD #	EWP	VoIP Model	DOD #	EWP
E-1600A-TP-EWP	218	Standard	E-1600-TP-IP-EWP	255	Standard
E-1600A-TP2-EWP	218		E-1600-TP2-IP-EWP	255	
E-1600A-GT-EWP	218		E-1600-GT-IP-EWP	255	

What is EWP? When installing Viking products outdoors, always use the EWP version, see page 31



Universal Emergency Phone Kit

ADA Compliant, Ideal for Custom Elevator Panels

- For Features and Operation refer to 1600A or 1600-IP Series on page 4
- Material: 0.062” 16 gauge zinc plated steel
- Analog PABX, CO line or FXS port powered (analog only)
- Dimensions: 5.0” x 5.0” x 2.25”
- Mounting: Install behind elevator panels for applications requiring a custom panel

Analog Model	DOD #	EWP	VoIP Model	DOD #	EWP
E-1600-55A	215	Available	E-1600-55-IP	255	Available

What is EWP? When installing Viking products outdoors, always use the EWP version, see page 31



Double Gang VoIP Emergency Phones

- For Features and Operation refer to 1600-IP Series on page 4
- Mounting: Flush mount in a standard double gang electrical box
- Surface mount with optional VE-5x5 enclosure surface mount box (page 33)
- Material: 14 gauge brushed marine grade 316 stainless steel
- Ideal for Area of Refuge applications when mounted in a fire rated double gang electrical box
- Dimensions: 5.0" x 5.0" x 2.25"
- Model E-1600-22-IP is a two button version that dials up to 5 additional numbers for general info or directions



E-1600-22-IP



E-1600-32-IP

VoIP Model	DOD #	EWP
E-1600-22-IP	255	Available
E-1600-32-IP	255	

What is EWP? When installing Viking products outdoors, always use the EWP version, see page 31

Non-Chassis Emergency Phones

ADA Compliant, Comes with Braille Label and LED

- For Features and Operation refer to 1600A or 1600-IP Series on page 4
- These are parts kits without a chassis
- Models E-1600-52A and E-1600-52-IP have 2 push buttons, one "Info" and one "Help"
- Ideal for applications that don't require traditional housing
- Kit includes: printed circuit board, speaker, microphone, switch(es)
- Analog products are PABX, CO line or FXS port powered
- VoIP models are PoE powered
- Connections: gel-filled butt connectors



E-1600-50A-EWP version shown

Analog Model	DOD #	EWP
E-1600-50A	215	Available
E-1600-52A	215	

VoIP Model	DOD #	EWP
E-1600-50-IP	255	Available
E-1600-52-IP	255	

What is EWP? When installing Viking products outdoors, always use the EWP version, see page 31

Analog to VoIP Conversion Kit

For Features and Operation refer to 1600-IP Series on page 4

To convert your Viking analog phones to VoIP, use an E-1600-53-IP conversion kit. Run Ethernet cable to the site, open the phone and remove the old analog board. Mount the new VoIP circuit board in the same location (it's an exact fit) and reassemble. The kit saves by re-using the housing, faceplate, mic, speaker, switch, and LED. The conversion takes less than 15 minutes (slightly longer for EWP models) and requires no field modifications. Save the analog board to service other analog phones or drop it into your electronics recycling bin.



VoIP Model	DOD #	EWP
E-1600-53-IP	255	Available

What is EWP? When installing Viking products outdoors, always use the EWP version, see page 31

Handsfree Emergency Phone for Elevator Phone Box

ADA Compliant with Braille Label and "Call Connected" LED

- For Features and Operation refer to 1600A Series on page 4
- Material: 14 gauge red powder painted aluminum
- Two-wire installation - analog PABX, CO line or FXS port powered
- Dimensions: 9.875" x 6.86" x 2.1"
- Mounting: Recess mounting in standard elevator phone box (10" x 7" x 3")



Model	DOD #
K-1600-EHFA	215

Vandal Resistant Speaker Phone with Dialer

- Superior automatic noise cancelling design for loud environments
- Analog PABX, CO line or FXS port powered (analog only)
- **VoIP** models use Power over Ethernet (PoE) - for **VoIP** features and operation refer to page 42
- Marine Grade 316 stainless steel faceplate with metal call button

When the call button is pressed, the **E-30** automatically dials a pre-programmed 1-20 digit number. The phone will dial up to 4 additional numbers if a busy signal or no-answer is detected. The phone numbers are programmed from any touch tone phone and stored in non-volatile memory. The **E-30** can be set to auto-answer and disconnects on silence, busy, dial tone, CPC or time out. The unit is designed for non-ADA emergency, door and gate entry applications. Temperature range: -15° F to 130° F. Dimensions: 5" x 5" x 2.25".



Shown in optional **VE-5x5** surface mount box (Page 33)

Analog Model	DOD #	EWP	VoIP Model	DOD #	EWP	What is EWP? When installing Viking products outdoors, always use the EWP version, see page 31
E-30	212	Available	E-30-IP	248	Available	

“Push to Talk” Speaker Phone

The **E-30-PT** has the same temperature and dialer specifications as the **E-30** (above). The unit is designed to be used in place of the **E-10A** and **E-20B** handsfree phones in noisy applications. Marine grade 316 stainless steel panel.

Model	DOD #	EWP	What is EWP? When installing Viking products outdoors, always use the EWP version, see page 31
E-30-PT	214	Available	



Video Speaker Phone with Dialer

The **E-35** has the same audio, temperature and dialer specifications as the **E-30** (above). The **E-35** also includes a high resolution color CCTV camera – refer to page 30 for camera specifications. The camera operates up to 150 feet on Cat-5e cable. Marine grade 316 stainless steel panel. Camera power supply included.

Analog Model	DOD #	EWP	VoIP Model	DOD #	EWP	What is EWP? When installing Viking products outdoors, always use the EWP version, see page 31
E-35	178	Available	E-35-IP	251	Available	



ADA Compliant Stainless Steel Emergency Phone

- For Features and Operation refer to 1600A or 1600-IP Series on page 4
- Material: 14 gauge brushed marine grade 316 stainless steel
- Mounting: Flush mount with included plastic rough-in-box or surface mount with optional **VE-5x5** enclosure (Page 33)
- Two wire installation – analog PABX, CO line or FXS port powered (analog only)
- Dimensions: 5.0" x 5.0" x 2.25"

Analog Model	DOD #	EWP	VoIP Model	DOD #	EWP	What is EWP? When installing Viking products outdoors, always use the EWP version, see page 31
E-1600-30A	215	Available	E-1600-30-IP	255	Available	



Line Concentrator

Up to 6 Emergency Phones Can Share One Line

- Meets the ASME A17.1 Requirements
- Communicate with local and/or remote authorized personnel

The **LC-6** eliminates the monthly charges for a dedicated line to each elevator. Up to six emergency phones can communicate with authorized personnel on 3 other phones within a building, or add a telephone line to allow communication outside the building. A call initiated by an emergency phone can dial internally, externally, or both. Any other phones that are activated will be conferenced into the conversation, thus fulfilling ASME A17.1 requirements. Fire officials can call each cab, place an "all call" to all cabs, or break into in-progress "911" calls. Use with model **LV-1K** to verify the operability of the telephone line on a daily basis. Power supply included.

Model	DOD #
LC-6	245



Analog Line Sharing for IP PBX's/VoIP Phone Systems

The **LS-911** offers a cost-effective, reliable method of handling 911 emergency calls for IP PBX's and networked phone systems. Connected to an FXO port, it lets you enjoy the advantages of conventional analog 911 service, including traceability and 911 callback, without having to dedicate an analog line exclusively for this purpose.

911 calls routed to the **LS-911** receive priority, taking the analog line from the fax, card reader etc. if it is in use. A special recall feature maintains the availability of the line in the event the emergency call is disconnected, so 911 personnel can call back to reestablish the connection. Power supply included.

Model	DOD #
LS-911	238



Smart Line Sharing Device With Inbound Switching Capability

- Routes both incoming and outgoing calls
- Allows an Emergency device to share a phone line with other devices (fax machines, phones, modems)
- Gives priority to the Emergency devices
- Incoming calls routed to one of two ports by Caller ID, Distinctive Ring or Call Back
- Status LED displays mode of operation
- Can store up to 12 Caller ID numbers
- Provides a busy signal to the phone port when an Emergency device is in use
- Power supply included.

Model	DOD #
LSD-2	262



Line Seizure Relay

Emergency Device Can Share a Line with a Phone System

Viking's Emergency Line Seizure Relay allows the Elevator/Emergency phone or alarm dialer to share an existing C.O. line. When the emergency phone or alarm dialer initiates a call, the line is taken away from its normal use and receives new dial tone for the emergency call. Any call in process is disconnected. The **LSR-1** always connects to the emergency device during power failure. Power supply included.

Model	DOD #
LSR-1	230



Line Verification Panel with Key Switch

- Meets the ASME A17.1 Requirements
- Immediate Alarm on loss of line
- Compatible with all Analog Elevator Phones

Use with any existing single line Viking 1600A Series emergency phone. With the **LV-1K** installed, the 1600A Series phone will check the telephone line on a daily basis. The **LV-1K** will sound an audible signal every 30 seconds and flash a red light when a telephone line fault is detected. Authorized personnel can silence the audible signal with the included key switch. The LED light will remain flashing until the fault is corrected. Use in conjunction with the Viking model **LC-6** to show line verification for up to six 1600A Series emergency phones. Mounts in a standard double gang electrical box.

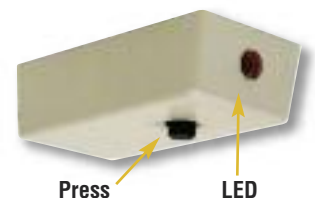
Model	DOD #
LV-1K	246



Silent Panic Button Kit for use with Viking Emergency Phones

The **PB-1** Panic Button is designed to be used in conjunction with a Viking 1600A or 1600-IP Series emergency phone (not included). The unit can be discreetly mounted under a desk, counter, etc. When the button is pressed, the phone calls up to 5 numbers and gives a pre-recorded message while the LED lights red to indicate activation. The speaker is disabled but the called party hears everything that is happening at the installation site, making the **PB-1** a very effective security measure.

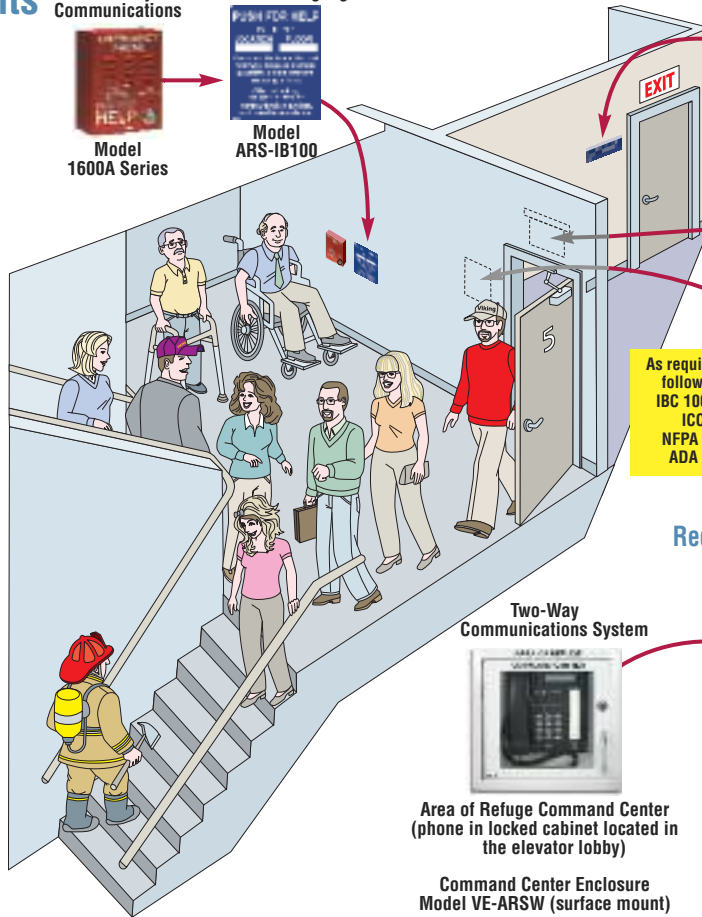
Model	DOD #
PB-1	233



Requirements for INSIDE the Area of Refuge

Two-Way Communications
Model 1600A Series

Instructional Signage
Model ARS-IB100



Directional Signage



Model ARS-DLB100 (Left arrow)
Model ARS-DRB100 (Right arrow)

Illuminated Signage



Model ARS-LR100

Tactile Signage



Model ARS-TB100

As required by the following codes:
IBC 1007, 1011
ICC 703
NFPA 22, 101
ADA 4.3.11

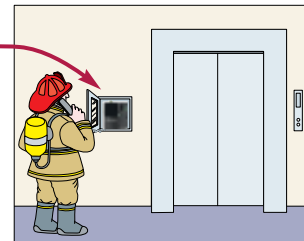
Requirements for the Area of Refuge Lobby Command Center

Two-Way Communications System



Area of Refuge Command Center (phone in locked cabinet located in the elevator lobby)

Command Center Enclosure
Model VE-ARSW (surface mount)

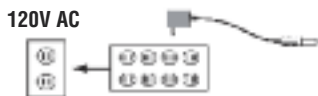


*For buildings under 60 ft. For taller buildings, the Refuge Command Center phone should be located in the Fire Command Center

Recommendations for 6 or Less Area of Refuge Emergency Phones

High Efficiency UPS
(Tripp-Lite model Internet SSU or equivalent)

6 Port Line Concentrator
Model LC-6



Connect up to 6 Area of Refuge emergency phones (1600A Series) to one command center phone and one C.O. line. UPS must have a minimum of 90 minute backup.

Recommendations for 7 - 144 Area of Refuge Emergency Phones

Use Panasonic KX-TA824 with expansion cards and in combination with multiple Viking Model LC-6. See **DOD# 235**

Model	Description	DOD#
ARS-IB100	Area of Refuge sign-Instructional Blue	235
ARS-TB100	Area of Refuge sign-Tactile Blue	235
ARS-LR100	Area of Refuge sign-Lighted Red	235
ARS-DLB100	Area of Refuge sign-Left Arrow Blue	235
ARS-DRB100	Area of Refuge sign-Right Arrow Blue	235
VE-ARSW	Viking Enclosure-ARS Surface Mount White	237

Emergency Poolside Phones



Model E-1600-30A-EWP
Marine Grade 316 Stainless Steel
ADA Compliant Phone (see page 9)



Shown in optional VE-5x5 surface mount box (Page 33)

For Features and Operation refer to 1600A or 1600-IP Series on page 4

Pool Phone Laws

The map shows the states in red that are required by code to have pool emergency phones. If your state is not shown in red, it does not mean you are exempt. Please check your local codes for guidance.

State by State Regulations
DOD # 870



Hot-Line Single Number Dialer Phones

Auto Dialing Emergency/Courtesy Phones Dials a Pre-Programmed Number When the Handset is Lifted

- 1-32 digit programmable speed dial number
- Telephone line powered and touch tone programmable
- Hearing aid compatible amplified handsets with rotary handset volume control
- Touch tone and 10/20 pps pulse dialing
- Non-volatile memory (no batteries required)
- Restricts fraudulent calls from hand held dialers
- Available in red, ash or custom colors (see below)
- Operates on a C.O. line or analog PABX/KSU extensions
- Optional **Q170600 Ringer** can be added

Applications: Courtesy and Emergency Phones
Customer Service
Airline/Hotel/Rental Car Reservations
Help Lines

Cash Machines
Taxi Service
Security
POS Displays

Replace leased ringdown circuits using standard loop start C.O. lines. The Hot-Line phone automatically dials the programmed number whenever the handset is picked up. Four-second pauses can be programmed for use on Centrex or behind PABX.

Model	Description	DOD #
K-1900D-2	Red Hot-Line Desk Phone	360
K-1900W-2	Red Hot-Line Wall Phone	360
K-1900D-2 ASH	Ash Hot-Line Desk Phone	360
K-1900W-2 ASH	Ash Hot-Line Wall Phone	360
Q170600 RINGER	Electronic Ringer	834



K-1900W-2

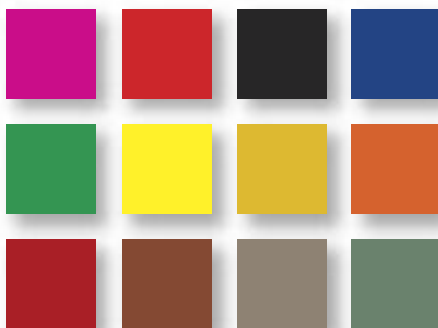
K-1900D-2

Free Programming (100 Unit Minimum)

Viking will pre-program hot line phones or dialers with any number up to 32 digits or pauses, at no charge (minimum quantity 100). To take advantage of this free service, contact us at 715-386-8861. The following models are covered by this program:

K-1900-5	K-1900W-2 (Red)
K-1900W-2 ASH	K-1900D-2 (Red)
K-1900D-2 ASH	K-1900-7

Hot-Line Phones in Custom Colors



ANY Pantone color available!
MINIMUM QUANTITY NOW REDUCED TO ONLY 144 UNITS!
CALL SALES AT (715) 386-8861 FOR DETAILS.

Dialer Network

This electronic network, used in Viking's Hot-Line Phones, can be used to convert any standard carbon mic handset phone into a single number hot-line phone.



Model	Description	DOD #
K-1900-6	Hot Line Network Board	360

Manual (No Dial) Phones with Ringers

Ringdown, Courtesy or Emergency Phone Applications

These manual phones are compatible with ringdown circuits such as model **DLE-200B** (page 26), dialers such as Viking's **K-1900-5** and **K-1900-30** (page 14) as well as an analog PABX, CO line or FXS port configured as a ringdown circuit.

Model	Description	DOD #
K-1500P-W	Red Manual Wall Phone	355
K-1500P-D	Red Manual Desk Phone	355
K-1500P-W ASH	Ash Manual Wall Phone	355
K-1500P-D ASH	Ash Manual Desk Phone	355



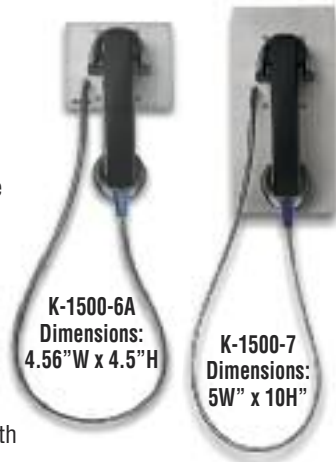
K-1500P-W

K-1500P-D



Analog (No Dial) Panel Phones

- **K-1500-6A**: 0.074" thick 304 stainless steel panel
- **K-1500-7**: 0.105" thick 316 marine grade stainless steel panel
- Connect to a ringdown circuit or a **Viking K-1900-5** dialer
- Armored cable and heavy-duty hookswitch
- Mounts on a standard double-gang electrical box
- Hearing aid compatible handset with volume control



Analog Model	DOD #
K-1500-6A	352
K-1500-7	352

- Optional **VE-5x10** (page 33) surface mount box available for model **K-1500-7**

Analog Panel Phone

- Touch tone or pulse auto-dialing (up to 32 digits) programmable speed dial number
- Vandal resistant 0.105" thick 316 marine grade stainless steel panel, armored cable and metal cradle
- Temperature range: -30° to 140°F
- Standard model armored cable length: 36"
- **EWP** model armored cable length: 54"
- Hearing aid compatible amplified handset with sealed push button volume control
- Optional surface mount box available, model **VE-5x10** (see page 33)



Analog Model	DOD #	EWP
K-1900-7	364	Available

What is EWP? When installing Viking products outdoors, always use the EWP version, see page 31

Analog Panel Phone with Keypad

- Auto-dials (up to 32 digits) programmable speed dial number
- Touch tone or pulse dialing with a programmable pre-dial pause
- Sealed metal touch tone keypad
- Multi-number dialer mode adds 5 speed dial numbers
- Temperature range: -30° to 140°F
- Standard model armored cable length: 36"
- **EWP** model armored cable length: 54"
- Vandal resistant 0.105" thick 316 marine grade stainless steel panel, armored cable and metal cradle
- Hearing aid compatible amplified handset with sealed push button volume control
- Optional **VE-5x10** (page 33) surface mount box available
- Dimensions: 5"W x 10"H x 4"D



Analog Model	DOD #	EWP
K-1900-8	362	Available

What is EWP? When installing Viking products outdoors, always use the EWP version, see page 31

VoIP Panel Phone

- Provide vandal resistant communication for SIP **VoIP** phone systems
- Auto-dials programmed phone number
- Dials up to 4 additional numbers on busy or no answer
- SIP compliant
- PoE Powered (class 1<4 Watts)
- Built-in loud ringer
- Mounts on a standard double-gang electrical box
- Standard model armored cable length: 36"
- **EWP** model armored cable length: 54"
- Dimensions: 4.56"W x 4.5"H



VoIP Model	DOD #	EWP
K-1900-6-IP	363	Available

What is EWP? When installing Viking products outdoors, always use the EWP version, see page 31

VoIP Panel Phone

- Provide vandal resistant communication for SIP **VoIP** phone systems
- Auto-dials programmed phone number
- Dials 4 additional numbers on busy or no answer
- SIP compliant
- PoE Powered (class 1<4 Watts)
- Built-in loud ringer
- Standard model armored cable length: 36"
- **EWP** model armored cable length: 54"
- Mounts on a standard double-gang electrical box
- Optional **VE-5x10** (page 33) surface mount box available
- Dimensions: 5"W x 10"H x 4"D



VoIP Model	DOD #	EWP
K-1900-7-IP	363	Available

What is EWP? When installing Viking products outdoors, always use the EWP version, see page 31

VoIP Panel Phone with Keypad and Entry System Features

- Provide vandal resistant communication for SIP **VoIP** phone systems
- Speed dials up to 250 numbers, each with rollover
- Store up to 1000 keyless entry codes
- PoE powered (class 2<6.5 Watts)
- SIP compliant
- Event logging with time and date stamp
- 2 sets of relay contacts for door/gate/camera control
- 26 bit Wiegand input for optional proximity card readers
- Built-in loud ringer
- Standard model armored cable length: 36"
- **EWP** model armored cable length: 54"
- Hearing aid compatible amplified handset with sealed push button volume control
- Optional **VE-5x10** (page 33) surface mount box available
- Dimensions: 5"W x 10"H x 4"D



VoIP Model	DOD #	EWP
K-1900-8-IP	361	Available

What is EWP? When installing Viking products outdoors, always use the EWP version, see page 31

Touch Tone and Pulse Hot-Line Dialers

Applications:

- Help Lines
- POS Displays • Information Kiosks
- Hotel/Car Reservations
- Courtesy Phones • Money Transfer
- Non-Volatile Memory
- No Batteries to Replace
- Convert any Analog Phone to a Hot-Line Dialer

These analog PABX, CO line or FXS port powered dialers automatically dial the programmed number each time the connected phone goes off-hook. They can help eliminate mileage charges on leased lines, toll fraud on courtesy or emergency phones and toll fraud from hand-held dialers. They are compatible with analog PABX, CO line or FXS ports and will not dial on incoming calls. Program from any analog touch tone phone.

Model **K-1900-4** provides 10 or 20 pps pulse dialing and with external switches, can dial up to 5 different 1 to 16 digit phone numbers. "Pulse only" phone lines usually cost less per month and cannot be hacked by hand-held dialers. **K-1900-4** can store 4-second pauses.



K-1900-4



K-1900-5

Model **K-1900-5** provides 1 to 32 digit Touch Tone dialing and 1 or 4 second pauses as needed to use behind a PABX, access a pager from an alarm contact, etc. The **K-1900-5** blocks hand-held dialers and "hook-switch" or pulse dialing. The dialer can provide fast (50 mS) or normal (120 mS) on/off Touch Tones.

Model	Description	DOD #
K-1900-4	Pulse Dialer	315
K-1900-5	Touch Tone Dialer	317

- The **K-1900-5** can be activated by a momentary contact closure, see **DOD# 818**
- Program a Multitude of Dialers or Hot-Line Phones, see **DOD# 901**

100 Number Speed Dialer

- Non-volatile memory
- Use on an analog PABX, CO line or FXS port
- Use with any analog touch tone phone

When used as a multi-number dialer the **K-1900-9** will allow the user to enter a 1 or 2 digit code that will speed dial a pre-programmed number. When the dialer calls the number, the user can be blocked from entering additional touch-tones. Alternatively, the **K-1900-9** can be programmed to allow touch-tones for use with interactive touch tone response systems.

The **K-1900-9** can also be programmed as a single number hot-line. Because the dialer is A.C. powered, it can be used on low current phone lines.

Model	DOD #
K-1900-9	321

The **K-1900-9** has a programmable call timer and can be programmed on-site or from a remote location using a touch-tone phone. Power supply included.



Smart Touch Tone Dialer with Redialing

The **K-1900-30** is an automatic dialer that dials a 1-20 digit phone number, and can be programmed to call up to 4 additional phone numbers if the line is busy, or is not answered. The **K-1900-30** can be used to add the smart dialing features of a Viking Model **E-30** to other non-dialing **E-Series** or **K-Series** phones, or any analog phone.

The **K-1900-30** connects to an analog PABX, CO line or FXS port. Programming can be done locally, or remotely by calling the unit. Power supply included.

Model	DOD #
K-1900-30	300



Two Input Alarm Dialer with Digital Announcer

The **K-202-DVA** Voice Alarm Dialer is a smaller version of the popular **K-2000-DVA** below. The **K-202-DVA** is a fully programmable, two input, multi-number auto dialer and digital announcer, designed for emergency and non-emergency message notification. Power supply included.

- Non-volatile memory (no batteries required)
- Two normally open or closed contact inputs
- 2 messages (1 minute record time per input)
- Stores up to seven 32-digit phone numbers per input
- In the event that the dialer receives a busy or no answer it will automatically dial up to six more numbers
- Local or remote programming and recording

Model	DOD #
K-202-DVA	305



Eight Input Alarm Dialer with Digital Announcer

- “Store Caster” mode available
- Non-volatile memory (no batteries required)
- Eight normally open or closed contact inputs

The **K-2000-DVA** is a programmable, eight input, multi-number auto dialer and digital announcer, designed for emergency and non-emergency message notification. It can store up to eight 32-digit numbers per input, for a total of up to 64 different numbers. The unit is capable of local or remote recording of up to eight different messages (one message per input), with a total recording time of eight minutes. In the “Store Caster” mode, eight different messages (“customer assistance needed in hardware please” etc.) can be provided. Power supply included.

Model	DOD #
K-2000-DVA	303



Automated Voice Message Delivery System

Model **K-6000-DVA** can automatically notify up to 1000 people of an event cancellation, school, church or business closing or delayed opening *with one call*. You can also record and forward a caller’s message to a group of phone numbers.

The **K-6000-DVA** is designed to connect to a standard analog PABX, CO line or FXS port. To activate the unit, an authorized administrator calls the **K-6000-DVA**, dials a 6 digit password, selects a pre-recorded message or records a live message up to 1 minute, then activates the unit via a touch tone command to automatically call all the phone numbers in a pre-programmed group. Up to 6 groups of phone numbers can be preprogrammed into the unit. On site, each group can be initiated by a contact closure. Activating an “All Call” calls all preprogrammed numbers to be dialed.

Power supply, USB Adapter and Application CD included.

Model	DOD #
K-6000-DVA	307

For faster calling, multiple units and phone lines can be used to form a “phone tree.”



2 Watt Paging Amplifier/Multi-Line Loud Ringer

- For PABX and electronic key system applications
- Drives up to (3) eight Ohm paging horns/speakers

The **PA-2A** monitors up to 6 analog lines for ringing or can be activated by a phone system contact closure. A loud electronic warble (108 dB @ 1 meter), double gong, quadruple chime or a door chime can be selected to announce incoming calls. To page, connect to a paging port or unused trunk input or FXO port on a phone system. The unit provides 2 Watts of power - enough to drive 3 eight Ohm speakers. The **PA-2A** has an input for a loud ringing on/off switch, an output for controlling a 12 Volt relay and a 600 Ohm output for sourcing high powered paging amplifiers. The **PA-2A** includes one paging horn and power supply.



Model	DOD #
PA-2A	485

For additional ceiling speakers and paging horns use models **25AE, 30AE, 35AE, 40AE, and 300AE** (see page 19 for specifications).

15 Watt General Purpose Telecom Paging Amplifier

- Supports background music and loud ringing
- For Centrex, PABX, IP, and key system applications
- Drives up to (15) eight Ohm paging horns/speakers
- This unit replaces the CPA-7B

The **PA-15** allows paging from a Key or PABX paging port, an unused trunk input or FXO port (provides 36 Volts of talk battery), or a ringing analog PABX station, Centrex, C.O. line or FXS port. The **PA-15** can disconnect on CPC, busy, silence or a 16 to 72 sec (defeatable) timer. The **PA-15** can provide an alert tone prior to paging. Background music (muted during page) can be added from an external source. 4 electronic tones are available for loud ringing. Power supply included.



Model	DOD #
PA-15	486

For ceiling speakers and paging horns use models **25AE, 30AE, 35AE, 40AE, and 300AE** (see page 19 for specifications).

30 Watt Professional Telecom Paging Amplifier

- For PABX and electronic key system applications
- Drives up to (30) eight Ohm paging horns/speakers or (50) 70V or 25V speakers

The **PA-30** provides paging from the phone system paging port or connect to an unused trunk input or FXO port (provides 40 Volts of talk battery). The **PA-30** has separate inputs and volume controls for paging, auxiliary source, loud ringing and background music. A contact closure or ringing line can activate loud ringing. A warble, double gong, quadruple chime or door chime sound can be selected. The **PA-30** also has inputs for a night transfer (loud ringing) on/off switch. The **PA-30** has a 600 Ohm output to drive additional amplifiers. Electronic switching eliminates pops and clicks. Power supply included.



Model	DOD #
PA-30	489

For ceiling speakers and paging horns use models **25AE, 30AE, 35AE, 40AE, and 300AE** (see page 19 for specifications).

60 Watt Compact 1 or 2 Zone Power Amplifier

- Add 60 Watts of total paging power to two separate zones
- Drives up to (60) eight Ohm or (100) 70V or 25V speakers

The **PA-60** boosts the power output of smaller paging systems by 60 to 100 speakers. Since each input has its own gain adjustment, one zone can be turned up louder for warehouse paging horn speakers, and the other zone can be turned down for office ceiling speakers. Two zones can also be helpful for installations in which one group of speakers is connected to a source that provides background music using the **Viking PI-1A** paging interface unit, and the other zone provides only paging.

The **PA-60** inputs are transformer coupled so they are floating and isolated. Connect to line level audio or direct to an existing paging amp output. Power supply included.



Model	DOD #
PA-60	493

For ceiling speakers and paging horns use models **25AE, 30AE, 35AE, 40AE, and 300AE** (see page 19 for specifications).

Connects to 600 Ohm output of:

CTG-1	FXI-1	PA-30
CTG-2A	MTG-10	PI-1A
DNA-510	PA-2A	RAD-1A
FBI-1A	PA-15	ZPI-4



Self-Amplified Paging System

The **SA-25** Self-Amplified Paging control unit interfaces with virtually any telecom or IP phone system with a paging port, a ringing analog FXS or an FXO port. The system can provide background music from an external source and generate loud or night ringing from a ringing analog station or phone system contact closure. The **SA-25** control unit is backwards compatible with the older Legacy Valcom and Bogen 4-wire self-amplified speakers.

The **SA-25** can directly drive a combination of up to 25 self amplified **Viking** 2-wire and/or older Legacy 4-wire self-amplified speakers. Power supply included.

Includes one SA-IR remote



Model	DOD #
SA-25	520

SA-25 Brochure **DOD #902**

Infrared Remote for Self-Amplified Paging System

Model **SA-IR** is a three button infrared remote control for use with model **SA-1S** and **SA-1H** self amplified paging speakers. Aim the infrared transmitter at the speaker. The up/down buttons allow users to set the appropriate volume level for each room, while the mute button eliminates just background music or all sounds.

Model	DOD #
SA-IR	527

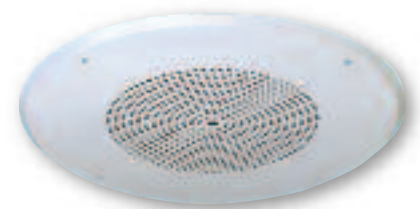


Remote Controlled Self-Amplified Speaker

Model **SA-1S** is an 8 inch paging speaker that has a built in 1.5 Watt power amplifier, an infrared remote control detector, and an integrated digital volume control, all built into an attractive off-white grill for flush mounting in office ceilings. The **SA-1S** self-amplified paging speaker uses a proprietary two wire protocol in which both 40 Volts DC power and audio are combined on the same pair of wires. Connect only to

Viking model **SA-25** controller or use the **SA-X12** expander to connect to any paging system.

Model	DOD #
SA-1S	525



Infrared Remote Controlled Paging Horn

The **Viking** model **SA-1H** is a 5 inch paging horn that includes a 1.5 Watt power amplifier, an infrared remote control detector, and an integrated digital volume control. The **SA-1H** self amplified paging horn uses a proprietary two wire protocol in which both 40 Volts DC power and audio are combined on the same pair of wires. It is designed for direct connection to the **Viking** model **SA-25** Controller or **SA-X12** Expander.

Model	DOD #
SA-1H	526



Expander/Adapter

Model **SA-X12** is a cost effective way to expand an existing paging system while adding remote control. Connect the **SA-X12** to any existing paging audio (600 Ohms, 25V, 70V, 4, 8, or 16 Ohms or an **SA-25** controller) and add up to (12) **SA-1S** or **SA-1H** speakers. Power supply included.

Model	DOD #
SA-X12	529



Anti-Feedback Paging Interface

- Eliminate the feedback “squeal” when paging
- Contact or adjustable “Voice Operated Recording” activates the paging amplifier
- High quality (80K/40K) digital message storage
- High output: 2V RMS into 600 Ohms

Now your paging amplifier can be turned up to any level and your phones can be located anywhere, even directly under a high-power paging horn. The **FBI-1A** maximizes efficiency by adjusting to the actual page length (up to 32 seconds). A contact is provided to activate the amplifier, if needed. Power supply included.



Paging Phone



Model	DOD #
FBI-1A	465

HOW IT WORKS: The “live” input from the paging port is digitally recorded. When complete, the paging amplifier is activated and the page is replayed once or twice.

Two-Way Handsfree Talkback Amplifier

Unused Trunk Input or FXO Port

Provides handsfree talkback paging for use in city desks, shipping, warehouses, service departments or any application where quick answers are needed. Connects to an unused trunk input or FXO port. Weatherproof bi-directional paging horn (**25AE**) and power supply included. One additional **25AE** paging horn can be used.

Model	DOD #
HF-3W	470



Night Bell Over Existing Paging System

Applications: Offices, Warehouses, Clinics – anywhere people may be working after the receptionist goes home

Connect to the night service line to provide electronic warble tone over an existing paging system whenever ring voltage is detected. The **K-600F** has both tone and level adjust and provides a relay contact for muting music or operation of external signalling devices, 120V bells, strobe lights, chimes, etc. The **K-600F** operates on any analog line that provides a minimum of 40V ringing. For generating audible tones from a contact closure use model **PA-2A** (Page 16) or **PI-1A** (below). No power supply required.

Model	DOD #
K-600F	476



Universal Telecom Paging Interface

- Select: FXO (loop start), FXS (ring trip) or paging port (VOX relay) interface mode
- 36 V Talk Battery for use with an FXO port or unused trunk input
- 600 Ohm volume controlled floating output - mutes music during page

In all modes the **FXI-1** provides normally open or normally closed relay contacts to activate the paging amplifier or connect to an external background music source. After paging, the **FXI-1** auto disconnects on CPC, busy signal, silence or default disconnect timer. An electronic night bell over paging feature can be activated from a momentary phone system contact closure. Power supply included.

Model	DOD #
FXI-1	494



Page Port/Trunk Input/FXO Paging Interface

- Night Bell • Mutes Music • 600 Ohm output • VOX switching
- Provides Talk Battery for connection to an unused trunk input or FXO port

Provides paging using phones (instead of a microphone) over a PA audio system. VOX contact closure mutes background music for phone systems that don't provide a paging contact (Panasonic, S.W. Bell, Intertel, etc.). If a Paging Port is not available, use an unused trunk input or FXO port. Power supply included.

Model	DOD #
PI-1A	491



Loud Call Announce/Ringing Amplifier

For electronic key telephones in noisy areas

The **M2W** will amplify call announce messages and ringing tones when connected to the speaker leads of an electronic or digital telephone. It cannot be connected to a 2500 set (use model **PA-2A**). The **M2W** is also useful for expanding the number of speakers connected to a Viking **PA-2A** or **PA-15** (Page 16). Each **M2W** can provide 2 Watts of paging power to drive three paging speakers. One **25AE** paging horn and power supply included.

Model	DOD #
M2W	480



4 Zone Paging Controller

- Switches line level signal to amplifiers
- Switches amplified signal to speakers
- Expand to 8 zones using 2 units
- All-call and 5 group call patterns selected by touch tones
- Balanced audio circuitry for low noise
- Input provided for background music

The **ZPI-4** paging system is capable of switching a line level signal (600 Ohms) to amplifiers or an amplified signal to 70V or 8 Ohm speakers. The **ZPI-4** features separate level controls for paging and background music (can be disabled on a per-zone basis). Also provided is a night bell with adjustable volume activated by a dry contact closure or a ringing analog PABX/KSU/FXS station. The **ZPI-4** is compatible with ringing analog PABX/KSU/FXS station ports (disconnects on silence, CPC, busy signal, touch tone (#) or time-out) as well as unused trunk inputs, and will interface directly with standard paging ports.

Model	DOD #
ZPI-4	499



Compatible with models (Page 16):
PA-2A PA-15 PA-30 PA-60

Single Line Smart Loud Ringer

- Operates from a ringing analog line or a contact closure
- 4 different tones available, Warble, Double Gong, Quadruple Chime, Electronic Bell
- Provides a door chime tone for either a doorbell, door open or "Push for Assistance" sensor

Model	DOD #
SR-1	477

- 90 dB @ 1 meter, 105 dB with external **25AE** paging horn
- Power supply included
- For a line powered loud ringer use **LPR-1** (see page 24)



SIP Loud Ringer with Visual Ring Indication

- Automatic Gain Control (AGC) increases ring volume to compensate for ambient noise
- PoE powered (class 2, < 6.5 Watts)
- SIP Compliant
- Relay output to trigger remote **Viking SL-2** Strobe Light or **LPL-1** Visual Ring Indicator
- LED Flashes for Visual Ring indication
- Remotely Control Loud Ring Volume from PC

Model	DOD #
SR-IP	577



Paging Speakers and Paging Horns

- **30AE**: 8 Ohm ceiling speaker with mounting hardware
- **35AE**: 8 Ohm ceiling speaker with volume control
- **40AE**: modern 8 Ohm ceiling speaker with excellent sound quality and integral mounting system

Model	DOD #
30AE	498
35AE	498
40AE	498
25AE	498
300AE	497

- **25AE**: 12 Watt 8 Ohm compact paging horn
- **300AE**: 30 Watt 8 Ohm/70 Volt paging horn for additional volume and voice intelligibility



Tile Bridge

Model	DOD #
SA-TBA	534

Use when mounting **Viking** models **SA-1S**, **30AE**, **35AE** or **40AE** Ceiling speakers on 2' x 2' or 2' x 4' ceiling tiles



Speaker Volume Control

Adjust the volume of individual paging horns, ceiling or wall speakers. Compatible with **Viking** 1-way paging amps. or any 8 or 16 Ohm or 25 Volt paging system. Mounts in standard single gang electrical box. Not recommended for 2-way (talkback) applications.

Model	DOD #
SV-5W	488



Clock Controlled Tone Generator Over Paging

- Timed single, double, or triple chime, or buzzer tones
- Alarm and standard NFPA/ANSI evacuation tones
- Easy to program, easy to change
- Programmable day of week on/off feature

Provides your paging system with up to 128 timed alert tones per 24 hour period. Different alert tones may be used to indicate start or end of shift, break, lunch, etc. Dry contact closures can activate alarm, fire, evacuation etc., sounds over paging. A door chime is also available for night ring or doorbell. These sounds can be activated remotely via a telephone using **Viking RC-3** (Page 40). Use with the **DVA-2WA** (Page 25) for timed announcements.

Model	DOD #
CTG-1	460



Emergency Mass Notification/Evacuation Announcer

- Includes 10 different tones and 5 different pre-recorded messages
- Securely activate, reset, or live page from a remote phone
- Connect to a phone line, FXS/FXO port, PABX station, or phone system

The **DNA-510** is a digital mass notification announcer, capable of providing up to 2 minutes of digitally recorded voice emergency instructions and alert tones over your existing paging system. When activated, the **DNA-510** will interrupt any current paging or background music and inject alert tones, emergency instructions, or a live page over your paging system. Compatible with the **Viking PA-2A, PA-15, PA-30, PA-60** (page 16) or any paging system. Power supply included.

Model	DOD #
DNA-510	492

Alert Tone Applications:	• Fire	• Evacuation	• Severe Weather	• Flash Flood
	• Tornado	• Lockdown	• Terrorist Alert	• All Clear



Single Line Paging Controller/2 Watt Amplifier

Add paging, phone-to-phone intercom, and door chime to your whole house audio system

The **SLP-1** allows the user to page family members or co-workers from any phone in your home or small business. Pages are heard over the same speakers installed for multi-zone music distribution. Music is muted during the page and optionally during phone calls. If the user is on an in- or out-bound call, the caller can be placed on hold with music during the page. The **SLP-1** can provide ringing and door chime over the system. An input for a lighted doorbell switch and an output for 12 Volt trigger or relay contact is provided. Power supply included.

Model	DOD #
SLP-1	478



Add Paging and Door Chimes to a Whole House Audio System

- Select from 8 preloaded CD quality sounds
- Download your own custom WAV files via your USB port
- Page from multiple lines by connecting multiple units

The **SLP-4** Single Line Paging controller will allow you to page family members or co-workers from any phone in your home or small business. The pages can be heard over the same speakers that are installed for multi-zone music distribution.

The **SLP-4** provides inputs for 4 lighted doorbell switches. The inputs select different sounds from a library of preloaded recordings or users may record their own sounds. When the doorbell switch is pressed, or the user pages, the music is muted while the appropriate sound or page is heard over the system speakers. The **SLP-4** connects in series with a single existing phone line and features a built-in 2 Watt amplifier, stereo pre-amp output, music on hold input, intercom features, and selectable loud ringing. Power supply included.

Model	DOD #
SLP-4	479



Preloaded CD Quality Sounds:

- Westminster chimes
- Wind chimes
- Barking dog
- Ding-dong
- Door knocking
- Alert tones
- Goblet chime
- Triangle



Master Clock/Networked Clock Controlled Tone Generator Over Paging System

- Accurate time base synchronizes periodically with your network or internet time
- Can also be used as a Master Clock to synchronize Viking CL series clocks
- Automatic daylight savings time and leap year correction

Features:

- Up to 14 schedules and up to 1000 events
- Pre-loaded with common school, business and factory alert tones or program with your own messages/tones over your network
- 6 minutes of CD quality WAV file record time
- 4 inputs for triggering emergency fire evacuation, severe weather, lock down and all clear alert tones or messages
- RS-485 output for communicating time sync data when used with Viking CL Series wireless analog and digital clocks (see below)



The **CTG-2A** is a networked clock controlled tone/message generator designed to provide accurately timed tones and/or messages over your existing paging system. This provides a cost effective way of signaling school period changes, factory shifts, breaks, lunch periods or providing messages at specific times for store sales, promotions, closing times, airport loading zones, etc. The **CTG-2A** can also be used as a master clock to automatically synchronize **Viking CL Series** clocks.

Model	DOD #
CTG-2A	464

The **CTG-2A** comes with programming software and an Ethernet port to allow PC programming of timed events, schedules, network or internet time synchronization, wave file download, message volume, daylight savings time, leap year, auxiliary relay control, etc. Power supply included.

Wireless Synchronized Clocks, RF Transmitter and Accessories

All clocks have built in 1/4 Watt repeaters capable of retransmitting the clock sync signal up to 500 ft in open space

Viking's Wireless Clock System provides reliable, accurately synchronized clocks for your entire facility. Eliminating dedicated clock wiring can save you thousands of dollars on installation and also allows for easy retrofitting. The system is comprised of a **CTG-2A** master clock, a **CL-RFT** clock RF transmitter, and Analog or Digital wireless clocks. The clocks will always display the correct time via updates from the **CTG-2A**.

Add your own logo - call for details

2.5" and 4" Digital Clocks
(shown with optional double mount bracket
CL-DMD2 or **CL-DMD4**)



CL-D2 & CL-D4

Wireless bright digital clocks require 120 Volt AC outlet (Power supply included). The clocks are updated every minute from the **CTG-2A**.



CL-A16

16" Analog Clock
(shown with optional double mount bracket **CL-DMA16**)

Wireless Analog clocks are battery operated and require no wiring. Battery life using (2) D size Duracell Procell batteries is more than 5 years. The clocks are updated every 4 hours from the **CTG-2A**. Clocks can be located up to 6,500 ft. from the **CL-RFT** transmitter/repeater or up to 500 ft. from another synchronized clock.

CAUTION: CL Series clocks cannot be used as stand alone clocks. They must be used in conjunction with a **CTG-2** or **CTG-2A** master clock and one or more **CL-RFT** transmitters.

12" Analog Clock



CL-A12

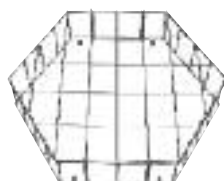
RF Transmitter/Repeater

The **CL-RFT** transmitter receives time sync data from the **CTG-2A** and transmits to the clocks via 915 to 928 MHz frequency hopping technology. Powerful 1 Watt (30dBm) output communicates up to 6,500 ft. in open space. Can also be configured as a repeater for larger spaces. Dimensions 11"H x 8" W x 1.7" D. No FCC license required.



CL-RFT

CL-WGA12 & 16
12" and 16" Analog Clock Wire Guard



Model	Description	DOD #
CTG-2A	Master Clock	464
CL-A12	12" Analog Clock	466
CL-A16	16" Analog Clock	466
CL-D2	2.5" Digital Clock	466
CL-D4	4" Digital Clock	466
CL-DMA12	12" Double Mount (Analog)	466
CL-DMA16	16" Double Mount (Analog)	466
CL-DMD2	2.5" Double Mount (Digital)	466
CL-DMD4	4" Double Mount (Digital)	466
CL-RFT	RF Transmitter/Repeater	466
CL-SMD2	2.5" Surface Mount (Digital)	466
CL-SMD4	4" Surface Mount (Digital)	466
CL-WGA12	12" Wire Guard (Analog)	466
CL-WGA16	16" Wire Guard (Analog)	466
CL-WGD4	4" Wire Guard (Digital)	466

Phone Line Powered Remote Access Device

- Programmable security code and access code
- Separate 600 Ohm audio and telephone line output
- Programmable call timer and silence time-out
- Relay contacts available for systems that need a dry contact closure

The **RAD-1A** remote access device gives authorized users remote access to one way paging amplifiers, digital announcers, and other audio programs. A programmable access code prohibits access by unauthorized users. The **RAD-1A** answers on the first ring and disconnects on CPC, call time out, silence time out, busy, or by dialing #7. Separate 600 Ohm audio and telephone line outputs are provided, allowing connection to audio amplifiers, digital announcers, or phone systems.



Model	DOD #
RAD-1A	410

- Remote Access to:**
- Paging systems, such as Viking's: **PA-2A, PA-15, PA-30, PA-60** (page 16)
 - Advertisements, radio, or church programs
 - Digital announcers
 - Audio monitoring for security purposes
 - For more applications see **DOD# 874**

Amplified Remote Access Device

The **RAD-AMP** extends the usefulness of your phone system to remote employees, as well as providing call forwarding to remote employees or locations.

- Modes of Operation**
- Telecommuting Extender
 - Line Extender
 - Call Diverter

As a Telecommuting Extender, the **RAD-AMP** gives remote workers access to most PABX/KSU features from their home or cell phone. The home based employee hears a special tone when answering and has the option of taking the work related call. Remote call center personnel can "Log-In" and Log-Out" or change their forwarding number as their location changes. Using touch tones, remote workers can use phone system features to transfer the call to another extension or voice mail, start a conference call, generate a page or any other feature available to an analog PABX/KSU extension.

Model	DOD #
RAD-AMP	415

As a Line Extender, the **RAD-AMP** provides authorized users remote access to PABX, Centrex or Electronic Key system features.



As a Call Diverter, the **RAD-AMP** provides call forwarding from one location to another. After detecting an inbound call, the **RAD-AMP** accesses a second phone line, dials a preprogrammed touch tone number, and then bridges the two lines.

Programmable Touch Tone and Rotary Toll Restrictor

- Eliminate long distance toll abuse
- Override bypass code
- Non-volatile memory – no batteries required
- 1 to 50 minute call timer
- Analog PABX, CO line or FXS port powered
- Centrex and PABX compatible

Program up to 40 prefixes, area codes or phone numbers to be blocked or allowed. The **TR-1** can block all Operator assisted calls, Directory Assistance, 976 and 900 calls, and "1+" long distance, while toll-free calls (selectable allow/block) and emergency "911/311" calls (always allowed) are ignored.

The **TR-1** features can be programmed on site or remotely using a Touch Tone phone. The programmer must know the unit's security code to change the programming. The 6 digit override bypass code allows parents or supervisors to make calls normally blocked by the **TR-1**.



Model **TR-1** shown open

Model	DOD #
TR-1	705

- Applications:**
- Bars and Restaurants
 - Construction Site Phones
 - Employee Lunch Rooms
 - Courtesy Phones
 - Roommates
 - Prevents 976 & 900 Abuse
 - Hotel/Motel
 - Time Share Condos
 - Calling Card Only
 - Emergency Phones (with override)
 - Inbound Only Phones



ACA-1A

Automated Call Attendant



Model **DOD #**
ACA-1A **005**

DVA-LPA

Phone Line
Powered
Digital
Announcer



Model **DOD #**
DVA-LPA **128**

DVA-TNT

Time and Temp Announcer



Model **DOD #**
DVA-TNT **129**

EV-1

Emergency Voice Module



Model **DOD #**
EV-1 **135**

HD-1

Handset
Interface
DTMF Dialer



Model **DOD #**
HD-1 **405**

K-1500-E

Elevator
Phone
(non ADA)



Model **DOD #**
K-1500-E **220**

K-1500-EHFA

Elevator
Phone
(non ADA)



Model **DOD #**
K-1500-EHFA **220**

LC-3

Line Concentrator



Model **DOD #**
LC-3 **223**

LC-8

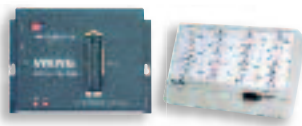
Line Concentrator



Model **DOD #**
LC-8 **225**

LM-24S

Line Status Monitor System



Model **DOD #**
LM-24S **670**

NS-1

Night Switch



Model **DOD #**
NS-1 **540**

PC-7

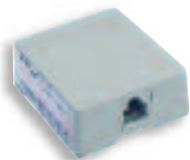
Automatic Privacy Cord



Model **DOD #**
PC-7 **560**

PJ-14

Two Line Privacy Device



Model **DOD #**
PJ-14 **560**

SO-24A

Silent Observation Unit



Model **DOD #**
SO-24A **690**

SO-24 AK

Cord Set for Digital Systems



Model **DOD #**
SO-24 AK **819**

SQRG-12

Sequential Ring Generator



Model **DOD #**
SQRG-12 **060**

TG-1

Privacy Device for Punch
Down or Terminal Block



Model **DOD #**
TG-1 **560**

TG-2

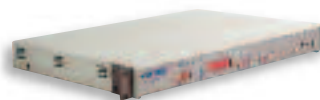
Modular Privacy Device



Model **DOD #**
TG-2 **560**

TMS-12A

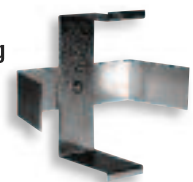
12 Line Call Sequencer



Model **DOD #**
TMS-12A **070**

VE-RMB

Retrofit
Mounting
Bracket



Model **DOD #**
VE-RMB **431**

Loop Detector Board

The **LDB-1** provides a contact closure when used in series with telecom devices on an analog phone line. Analog PABX, CO line or FXS port powered.



Model	DOD #
LDB-1	406

Panasonic Doorphone Station Adapter

The **PAN-1** allows a **Viking** speaker phone (E-10A, E-20B, E-30, E-35, E-40, E-50, E-60, E-65, E-70, E-75, etc.) to be connected in place of a Panasonic KX-T30865 or KX-T7775. Power supply included.



Model	DOD #
PAN-1	145

Loop and/or Ring Detector

The **LDB-2** Ring/Loop Detect monitors an analog phone line for ringing and/or in use condition. 2 sets of relay contacts are activated when these conditions are detected. When monitoring for ring, the relay can be adjusted to stay on steady or follow a ring cadence. A 12 Volt output is provided. Power supply included.



Model	DOD #
LDB-2	408

Line Powered Loud Ringer

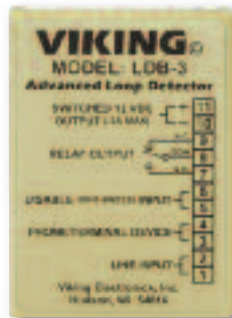
This auxiliary electronic ringer operates on any analog line that provides a minimum of 40 Volts 20-30 Hz AC ring voltage. Nominal 3 KHz warble provides up to 92 dB SPL @ 1 meter. The **LPR-1** can be connected via screw terminals or modular RJ-11 jack. A volume control and a 7 foot modular cord are provided. No power supply is required.



Model	DOD #
LPR-1	550

Advanced Loop and/or Ring Detector

The **LDB-3** monitors an analog phone line, PABX or FXS line and provides a normally open or normally closed contact during ringing, off hook or both. The unit can also provide a 12V DC 350 mA output for strobes. The **LDB-3** can follow the ring cadence or stay on steady during ring. It can be set up not to activate from "Info" button on two-button phones. Power supply included.



Model	DOD #
LDB-3	409

Multi-Tone Generator

The **MTG-10** can be connected to a paging source, phone system's paging port or background music. When a contact closure is provided to one of the inputs, the paging or background music is faded out and the appropriate tone is generated over the paging system. The siren and the evacuation whoop have priority and override any other tone.



The **MTG-10** can also be configured to provide a tone every 15 seconds to notify callers that

their call is being recorded. Power supply included.

Model	DOD #
MTG-10	482

Time Delay Relay

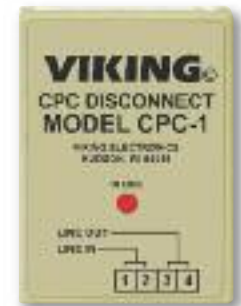
The **TDR-1** can be programmed to produce one of 8 closure times from .5 to 20 seconds. Can also be set up as a delay on operate relay. Accepts positive or negative-going logic level voltage or a contact closure. Power supply included.



Model	DOD #
TDR-1	421

Generate a CPC Disconnect

The **CPC-1** and **CPC-4** provide a momentary (1 second) break in the line current to signal telephone equipment the calling party has hung up. They generate the disconnect signal after detecting busy, fast busy, return to dial tone and silence. Available in 1 line (**CPC-1**) and 4 line (**CPC-4**) configurations. Phone line powered.



Model	DOD #
CPC-1	421
CPC-4	444



Digital Voice Announcer with 7.5 Minutes of Record Time

- 2 Watt amplifier for use with paging speakers and horns
- AGC for recording from handset, tape, CD, PC soundcard, etc.
- 4 professional on-hold messages included
- Recording can be on-site or in a professional studio
- Power supply included

Applications Include:
 Promotion-On-Hold, Airports,
 Museum/Information Displays,
 Message Repeater,
 Moving Sidewalks, etc.



Model	DOD #
DVA-2WA	110

Customer Favorite Application:
Brahms Lullaby Baby Announcer (DOD # 865)

Professional Digital Voice Announcer/Recorders

Applications: ACD, UCD, Intercept, Hotel/Motel Wake Up, Night Answer, Ski Resorts, Movie Theaters, Work Schedules, School Closings, Out of Service, etc.



Model DVA-500A

- Single 1 minute channel
- Ring trip or 4 wire E&M
- Local or remote recording
- Power supply included



Model DVA-1003B

- 3 independent 1 minute channels
- Ring trip or 4 wire E&M
- Local or remote recording
- Announcer cycles automatically, adjusts to message length
- Power supply included



Model DVA-3003

- 3 independent 1-4 minute channels
- Or a single 12 minute channel with optional **ERAM-60** expansion chips (see below)
- Ring trip or 4 wire E&M
- Local or remote recording
- Power supply included

Model	Description	DOD #
DVA-500A	Digital Announcer (1 minute)	115
DVA-1003B	3-Channel Digital Announcer (1 minute/channel)	125
DVA-3003	3-Channel Digital Announcer (1-4 minutes/channel)	127

Hotel/Motel Wake Up Application - See PB-100 (Page 39).

Standard Carbon Handset

For voice recording on **Viking** products.

Model	Description
Q171030	Carbon Handset



Memory Expansion Chip

Expand record memory of **Viking** products.

Model	Description	DOD #	Use with:
ERAM-60	1 Minute Expansion Chip	813	<ul style="list-style-type: none"> • DVA-1003B • DVA-3003

Automated Receptionist - Digital Call Screening and Messaging System

- Add "This call may be recorded..." or "Our store hours are..." to the line input of your phone system or single line phones
- Cost effective - Quick and easy programming via your phone
- 12 minutes of flash memory

The **AR-1** Automated Receptionist answers calls with an informative greeting, then lets callers ring through to talk to someone live, select from other prerecorded messages, or hang up. Programming functions and message recording are accessed locally or remotely, using a standard Touch Tone phone, or record from tape, CD, PC, etc. Up to 8 different messages can be recorded. They consist of a Day greeting, a Night greeting, a transfer message, four Menu messages, and a Goodbye message. The **AR-1** can allow callers with the correct code to bypass the greeting and ring through. The unit can allow callers to enter 0, 7, 8, or 9 to ring the phone port in 4 different distinctive ring patterns. The **AR-1** can allow calls to ring through after the caller has listened to the entire greeting message. The **AR-1** passes caller ID to the phones or phone system. Power supply included

Model	DOD #
AR-1	105



Two-Way Ringdown Circuit

Features

- 0.15 or 2 sec CPC
- Precise dial tone
- Standard or distinctive ringing
- 20 Hz/2 REN ring output
- Prison phone mode
- 4.75" x 2.75" x 1.38"
- 32V talk battery

Applications

- Demonstrate telecom gear
- Prison phones
- Program alarm panels
- Test and repair
- Inter system communication
- Golf course phones



Model	DOD #
DLE-200B	605

The **DLE-200B** Line Simulator produces two-way communication between standard telecom products such as key systems, PABXs, fax machines, modems, dialogic cards and standard single line phones without the requirement for phone lines. Power supply included.

Advanced Two Way Ringdown Circuit Supports High Speed Data

- 911 mode for classroom training
- Produces precise dial tone, ringback, busy, reorder, and S.I.T. tones
- Touch tone detection or standard Ringdown
- Provides name and number caller ID
- Audio input/output jack for amplified speaker or loading voice mail systems

The **DLE-300** simulates loop start phone lines and allows two-way communication between telecom devices or systems. It provides standard or distinctive ringing (6 REN) and 40 Volts talk battery. Power supply included

Model	DOD #
DLE-300	607

The **DLE-300** eliminates leasing phone lines for diagnostics testing or demonstrations. A CPC break is provided after hang up.



Maximum loop length per port: 7,000 feet using 24 gauge twisted pair

Four Port Enhanced Auto Routing Switch

- Allows any four analog devices to share a single line
- Ports are balanced to prevent noise on long runs
- Caller ID information is stored and retransmitted during transfer
- Provides realistic ring-back tones while re-ringing selected device
- Routes calls via CNG tone, distinctive ringing, touch tones sent by calling device or manually
- Compatible with high speed modems
- Automatic "privacy" eliminates interruptions on both in and outbound calls

Model	DOD #
FAXJ-1000	261

- Monitors for calling party control (CPC)
- Power supply included



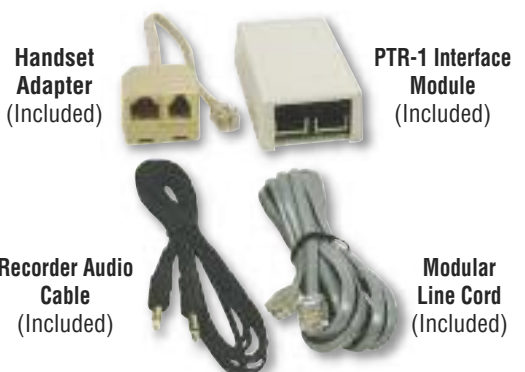
Professional Telecom Recording Kit

The **PTR-1** allows you to record:

- 1) All conversations on a particular phone line
- 2) Only conversations on your particular analog or digital telephone set
- 3) Only selected conversations (using the recorder controls)

Model	DOD #
PTR-1	438

The **PTR-1** is designed to work with standard digital or tape recorders with built-in VOX and ACG circuits.



Blue Strobe with Steady-On-Beacon Kit

- High intensity long life LED technology
- 4 programmable flash patterns
- 6 programmable brightness settings

Model **BLK-4** monitors analog lines for ringing and/or off hook or uses a contact closure. Program the strobe to flash steady or follow ring cadence. The kit includes a 4" diameter LED strobe, hardware, control module and 12V power supply. For use with **Viking** emergency phone or any analog phone.

Model	DOD #	EWP
BLK-4	654	Available

What is EWP? When installing Viking products outdoors, always use the EWP version, see page 31

Red, Amber and Clear lens sold separately (go to vikingelectronics.com and click Spare Parts)



Visual Telephone Status Indicator

Bright 0.75" LED visible over 100 feet, power supply included

Analog Phones: Flashing LED indicates "Ringing", steady LED indicates "On the Phone" and stutter flash indicates "Message Waiting" stutter dial tone is detected. Will also follow the cadence of 90 to 125V message waiting voltage.

Electronic Phones: Flashing LED eliminates guessing whose phone is ringing. Connect to electronic phone's speaker.

Headsets: Flashing LED ends interruptions by indicating that you are "On the Phone". Special T adapter provided.

Model	DOD #
VR-1B	697

- Applications:**
- Telemarketing
 - Office Cubicles
 - Tech Support
 - Customer Service
 - Message Waiting
 - Sales Offices



911 Strobe Controller

Nursing Homes, Office Buildings, Strobes for Rural Houses - When you need to know where a 911 call originated

- Activates on 911, 9-911, and 8-911 calls and 555 (test) or programmable number
- Bright flashing 0.75" LED visible over 100ft
- Resets by contact closure or touch tones

Model	DOD #
SC-911	236

- Can provide 12VDC or relay contact to operate an external strobe or visual indicator
- Power supply included



Blue LED Strobe Light

- High intensity long life LED technology
- Requires 12VDC Power
- 4 programmable flash patterns
- 6 programmable brightness settings

Model	DOD #	EWP
SL-2	242	Available

What is EWP? When installing Viking products outdoors, always use the EWP version, see page 31

Red, Amber and Clear lens sold separately (go to vikingelectronics.com and click Spare Parts)



Visual "Ring", "Off-Hook" and "Message Waiting*" Indication

The model **LPL-1** connects to any standard analog phone line to indicate "Ring" (visual flashing), "On the Phone" (steady on) or "Message Waiting*" (fast flash) indication. The large flashing LED can be seen up to 100 feet away. When used with a headset on an analog phone, you can end interruptions when associates don't realize you are on the phone. Phone line powered.

Model	DOD #
LPL-1	640

*When installed on phone systems with standard 90VDC message waiting voltage.

Note: Will not detect stutter dial tone (use model VR-1B above).



Message Waiting Light Retrofit Kit

- Operates on standard 80-150V DC message waiting voltage
- Fully modular for quick plug-in installation
- Blinks on message waiting or ringing
- 100% solid state for highest reliability
- LED visible for 50 feet
- Replaces **LM-1** and **LM-1LV**

Model	DOD #
LM-1A	662

Note: Will not detect stutter dial tone (use model VR-1B above).



Ring Booster/Power Fail

Ring Boosters

Ring Shape Conditioner and Power Boosters

Viking's Ring Boosters are designed to reshape and increase the ringing power of an existing analog line, PABX extension, FXS port, IP phone system analog port or any other telecom device which provides ringing. The units duplicate the incoming ring cadence, allowing compatibility with custom ringing features.

Each line is capable of ringing four 1 REN or eight 0.5 REN telephones and does not affect normal operation of the telephone line or features, such as caller ID, call waiting, hookswitch flash features, CPC signaling, etc. Viking offers four sizes to fit many different applications.

- True Sine wave ring signal output
- Boosts ring to 4 REN per line
- Caller ID compatible
- Compatible with distinctive ringing services
- Will not affect normal line operation
- Reshapes troublesome square wave ringing
- Fax and modem compatible
- Model RG-224 connects directly to CISCO VG224



RG-4
1 Line, Wall mount



RG-204
4 Line, Wall mount



RG-212
12 Line, Rack mount



RG-224
24 Line, Rack mount

Model	No. Lines	DOD #
RG-4	1	416
RG-204	4	417
RG-212	12	419
RG-224	24	418

Ground to Loop Start Converter

Convert Loop Start Equipment to Operate on Ground Start CO Lines

- 12 circuit automatic ground start to loop start equipment converter
- Easy, straight forward installation via an RJ-21X 25 pair connector
- Stackable to increase capacity
- No power supply required

Model GLS-12 is designed to allow up to 12 standard telephone sets, multi-line key systems and other loop start equipment to be connected to 2 wire ground start CO trunk lines. The GLS-12 provides the CO with the signaling required to draw dial tone when the loop start equipment goes off hook. Incoming calls ring directly to the loop start devices.

Model	DOD #
GLS-12	570



Power Fail Bypass Unit

Receive Incoming Calls During Power or System Failure

Continue to receive your calls, even if the phone system is down. The PF-6A bypass unit connects 6 standard single line station phones directly to the C.O. lines. When the system is restored, calls in process will not be interrupted. The PF-6A bypass unit will reconnect the phones to their station circuit only after they become idle. Power supply included. Model PF-6A operates when power is lost or on an alarm contact closure.

Model	DOD #
PF-6A	680

- Operates on 24 to 48 Volt systems
- Loop or ground start
- Automatic ground start converter for outbound calls

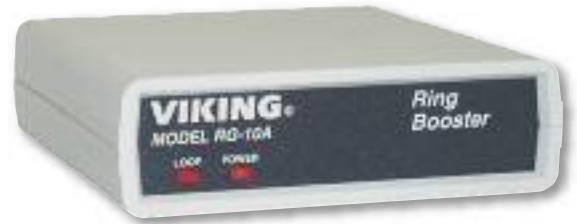


Ring Booster

Boost Ringing Power to Ring up to 12 Additional Phones

- Boosts ring to 12 REN
- Caller ID compatible
- Easy modular installation
- Compatible with distinctive ringing services
- Will not affect normal line operation
- Reshapes troublesome square wave ringing
- Capable of boosting talk battery and loop current

For use with Viking's: C-1000B, DLE-200B, DLE-300, FAXJ-1000, W-1000, W-2000A, W-3000 etc. or any Analog PABX, CO Line or FXS Port



The **RG-10A** ring generator is designed to increase ringing power of an existing telephone line, analog PABX extension, analog ISDN Terminal Adapter port, or any other telecom device which provides ringing. The **RG-10A** duplicates the incoming ring frequency and cadence allowing it to be compatible with custom ringing features. The **RG-10A** is capable of ringing twelve standard (1 REN) telephone devices and does not affect the normal operation of the telephone line or features provided by the phone company such as "Caller ID" and "Call Waiting."

Model	DOD #
RG-10A	420

Talk Battery Booster

Boost Talk Battery and Loop Current to Line Powered Devices

The **TBB-1B** will boost talk battery and loop current on single analog PABX, CO line or VoIP ATA FXS port. This is helpful for powering line powered devices, such as dialers and emergency phones on low voltage and/or loop current extensions and X-10 wireless phone jacks. Power supply included.

- Screw terminal connections for easy installation
- Boost talk battery to 48V
- Boost loop current to 26mA

Model	DOD #
TBB-1B	632



Long Loop Adapters

Extend Analog PABX Station Loop Length to 30,000 Feet

Viking's Long Loop Adapters provide long line and off premise extension (OPX) capabilities for PABX and KSU analog stations, ISDN terminal adapters, channel banks, etc. The units are compatible with pulse dialing, touch tone dialing, hook switch flash features, CPC signaling, and Caller ID features. A ground screw terminal allows for improved surge protection and as a earth ground reference for the regenerated line.

- Convert an analog KSU/PABX station to a standard voltage OPX
- Provides 48 VDC talk battery
- Provides 20 HZ, 10 REN sine wave ringing
- Electrically isolates PABX station from extended loop

Model	DOD #
LLA-1	615
LLA-4	620



LLA-1 (1 Line)
Replacement for Proctor model 46222



LLA-4 (4 Line)
Replacement for Proctor model 46224

Talk Battery and Ringing Power Supply

The **PS-48-RGA** power supply provides talk battery plus standard ring voltage where and when needed. Housed in a convenient wall mount enclosure, the **PS-48-RGA** comes complete with a plug-in power supply. The **PS-48-RGA** will provide telephone communication equipment with 48V DC talk battery. In addition, the **PS-48-RGA** will produce 90V 20 Hz sine wave ring voltage rated up to 10 REN. This allows a phone system to sequence up to 30 ringing phones.

Model	DOD #
PS-48-RGA	515

- Applications Include:**
- Electronic Key Systems
 - Paging systems
 - OPX's



Integrated High Resolution Color Cameras

Provide color analog CCTV video of who is at your door or gate

Viking offers many door entry phones with built-in color cameras for added security. The compact, high resolution, color composite video output provides versatility, while the -40° to 185° F extreme temperature rating ensures reliability.

Camera Specifications

Power: 6-22V DC 150mA (12V DC UL Listed adapter included with the product)

Image Sensor: 1/4" color CMOS

Video Output: 1 VP-P composite, NTSC, 75 ohms

Resolution: 420 lines (640 x 480 @ 30fps/307,200 pixels)

Sensitivity: 0.025 LUX (50 IRE) F 1.2 3200K

Lens: 2.1mm, conical pinhole

FOV (Field of View): 80° Horizontal, 60° Vertical, 100° Diagonal

Tilt/Swivel Adjustment: Vertical +/- 20°, horizontal +/- 30°

IR Compatibility: If IR illumination is required, you will need to replace the existing camera inside the product with a Viking model **VCAM-11R**. For more information, see **DOD# 190**.

Maximum Wire Run Length: 1000 ft with *RG59/RG6 for video and Cat-5 for power (1 pair) and entry phone audio (1 pair). 150 ft with Cat-5e for video, power and entry phone audio (longer video runs are possible by using video balun transceivers, see the product manual).

* Note: RG59 or RG6 with solid center conductor and 95% bare copper braid shield.



Model	DOD #	Page
AES-2005F	204	39
AES-2005S	204	39
E-35	178	9
E-35-EWP	178	9
E-35-IP	251	9
E-35-IP-EWP	251	9
E-50-BK	191	42
E-50-BK-EWP	191	42
E-50-BN	191	42
E-50-BN-EWP	191	42
E-50-SS	191	42
E-50-SS-EWP	191	42
E-50-WH	191	42
E-50-WH-EWP	191	42
E-65-BK	203	43
E-65-BK-EWP	203	43
E-65-BN	203	43
E-65-BN-EWP	203	43

Model	DOD #	Page
E-65-SS	203	43
E-65-SS-EWP	203	43
E-65-WH	203	43
E-65-WH-EWP	203	43
E-75-BK	208	43
E-75-BK-EWP	208	43
E-75-BN	208	43
E-75-BN-EWP	208	43
E-75-SS	208	43
E-75-SS-EWP	208	43
E-75-WH	208	43
E-75-WH-EWP	208	43
K-1205	183	37
K-1205-EWP	183	37
K-1705-3	159	36
K-1705-3-EWP	159	36
K-1705-3-BN	159	36
K-1705-3-BN-EWP	159	36

Model	DOD #	Page
K-1705-IP	254	36
K-1705-IP-EWP	254	36
K-1705-BN-IP	254	36
K-1705-BN-IP-EWP	254	36
K-1775-3	280	36
K-1775-3-EWP	280	36
K-1775-3-BN	280	36
K-1775-3-BN-EWP	280	36
K-1775-IP	258	36
K-1775-IP-EWP	258	36
K-1775-BN-IP	258	36
K-1775-BN-IP-EWP	258	36
VCAM-1	190	30
VCAM-11R	190	30
VCAM-2-BN	190	30
VCAM-2-SS	190	30
W-3005	181	35
W-3005-EWP	181	35

High Resolution Color Video Camera in a Single Gang Box

- Wide 70° viewing angle
- Tilt and swivel adjustment
- Comes with **Enhanced Weather Protection** for outdoor installation
- Power supply included
- Replacement faceplates available:
Stainless Steel (**PNL-VCAM-2-SS**) or
Oil Rubbed Bronze (**PNL-VCAM-2-BN**)



Model	Finish	DOD#
VCAM-2-SS	Brushed Stainless Steel	190
VCAM-2-BN	Oil Rubbed Bronze	190
PNL-VCAM-2-SS	Brushed Stainless Steel	190
PNL-VCAM-2-BN	Oil Rubbed Bronze	190

What is EWP?
When installing Viking products outdoors, always use the EWP version, see page 31

Compact Color Video Camera Kit

- Stainless steel mounting hardware
- Potted circuit board
- 12V DC adapter/wire connections
- Tilt and swivel adjustment
- IR illuminator compatible when using model **VCAM-11R**



Model	DOD #
VCAM-1	190
VCAM-11R	190



EWP Products Last Longer and Save Money!



Tough and durable thermoplastic potting

Outdoor environments cause ordinary circuit boards to fail early. But **Viking's Enhanced Weather Protection (EWP)** products are weather-sealed with a thick protective coating that keeps the elements out. **EWP** is so effective that our early production models are still out in the field, working as well as the day they were installed - without a single service call. That was over a decade ago!

So, if you want to save money on your outdoor installations, invest a bit more up front in **EWP**. Just order **Viking** products with an **EWP** suffix. Then install it and forget it.

Features

- PCB completely sealed in an injection molded thermoplastic potting compound
- Sealed LED, push button switch and microphone connections
- Internally sealed push button switches, trim pots and dip switches
- Mylar speaker with foam gasket
- Closed cell foam gasketing to prevent water penetration
- Weatherproof connectors filled with anti-corrosive gel
- **EWP** products are designed to meet an Ingress Protection rating of IP66.

Does my installation require Enhanced Weather Protection?

If you answer "yes" to one or more of the following statements, we recommend a **Viking** Emergency or Entry phone with **EWP (Enhanced Weather Protection)**.

1. The product is located outside where it is exposed to precipitation or condensation.
2. The product is mounted near an indoor swimming pool or spa.
3. The product's wire runs use conduit which could funnel warm inside air to the product mounted outside, causing condensation on the circuit board.
4. The product is mounted in a location with a known corrosive atmosphere.
5. The product is mounted in a parking garage with vehicle exhaust.
6. The temperature of the product can get below the dew point.

Model	DOD #	Page
BLK-4-EWP	654	27
E-10A-EWP	210	42
E-10-IP-EWP	248	42
E-1600-02A-EWP	215	7
E-1600-02-IP-EWP	255	7
E-1600-03B-EWP	215	6
E-1600-03-IP-EWP	255	6
E-1600-20A-EWP	215	7
E-1600-20-IP-EWP	255	7
E-1600-22-IP-EWP	255	8
E-1600-30A-EWP	215	9
E-1600-30-IP-EWP	255	9
E-1600-32-IP-EWP	255	8
E-1600-45A-EWP	215	6
E-1600-45-IP-EWP	255	6
E-1600-50A-EWP	215	8
E-1600-50-IP-EWP	255	8
E-1600-52A-EWP	215	8
E-1600-52-IP-EWP	255	8
E-1600-53-IP-EWP	255	8
E-1600-55A-EWP	215	7
E-1600-55-IP-EWP	255	7
E-1600-60A-EWP	215	6
E-1600-60-IP-EWP	255	6
E-1600-65A-EWP	215	6
E-1600-65-IP-EWP	255	6
E-1600A-AST2EWP	217	6
E-1600A-AST-EWP	217	6
E-1600A-BLT2EWP	217	6

Model	DOD #	Page
E-1600A-BLT-EWP	217	6
E-1600A-EWP	215	6
E-1600A-GT-EWP	218	7
E-1600AST2-IP-EWP	249	6
E-1600-AST-IP-EWP	249	6
E-1600A-TP2-EWP	218	7
E-1600A-TP-EWP	218	7
E-1600BLT2-IP-EWP	249	6
E-1600-BLT-IP-EWP	249	6
E-1600-GT-IP-EWP	255	7
E-1600-IP-EWP	255	6
E-1600-TP2-IP-EWP	255	7
E-1600-TP-IP-EWP	255	7
E-20B-EWP	210	42
E-20-IP-EWP	248	42
E-30-EWP	212	9/42
E-30-IP-EWP	248	9/42
E-30-PT-EWP	214	9
E-32-IP-EWP	248	42
E-35-EWP	178	9
E-35-IP-EWP	251	9
E-40-BK-EWP	187	42
E-40-BN-EWP	187	42
E-40-SS-EWP	187	42
E-40-WH-EWP	187	42
E-50-BK-EWP	191	42
E-50-BN-EWP	191	42
E-50-SS-EWP	191	42
E-50-WH-EWP	191	42

Model	DOD #	Page
E-60-BK-EWP	206	43
E-60-BK-IP-EWP	250	43
E-60-BN-EWP	206	43
E-60-BN-IP-EWP	250	43
E-60-SS-EWP	206	43
E-60-SS-IP-EWP	250	43
E-60-WH-EWP	206	43
E-60-WH-IP-EWP	250	43
E-65-BK-EWP	203	43
E-65-BN-EWP	203	43
E-65-SS-EWP	203	43
E-65-WH-EWP	203	43
E-70-BK-EWP	207	43
E-70-BN-EWP	207	43
E-70-SS-EWP	207	43
E-70-WH-EWP	207	43
E-75-BK-EWP	208	43
E-75-BN-EWP	208	43
E-75-SS-EWP	208	43
E-75-WH-EWP	208	43
K-1200-EWP	182	37
K-1205-EWP	183	37
K-1700-3-BN-EWP	157	36
K-1700-3-EWP	157	36
K-1700-BN-IP-EWP	253	36
K-1700-IP-EWP	253	36
K-1705-3-BN-EWP	159	36
K-1705-3-EWP	159	36
K-1705-BN-IP-EWP	254	36

Model	DOD #	Page
K-1705-IP-EWP	254	36
K-1770-3-BN-EWP	275	36
K-1770-3-EWP	275	36
K-1770-BN-IP-EWP	257	36
K-1770-IP-EWP	257	36
K-1775-3-BN-EWP	280	36
K-1775-3-EWP	280	36
K-1775-BN-IP-EWP	258	36
K-1775-IP-EWP	258	36
K-1900-6-IP-EWP	363	13
K-1900-7-EWP	364	13
K-1900-7-IP-EWP	363	13
K-1900-8-EWP	362	13
K-1900-8-IP-EWP	361	13
PRX-1	221	38
PRX-2	219	38
PRX-3	228	38
PRX-4	199	38
SL-2-EWP	242	27
VCAM-1	190	30
VCAM-11R	190	30
VCAM-2-BN	190	30
VCAM-2-SS	190	30
W-1000-EWP	170	35
W-2000A-EWP	170	35
W-3000-EWP	170	35
W-3005-EWP	181	35

Enclosures for Installing Products Outdoors

Added Protection for Viking Emergency Phones, Entry Phones, Doorboxes or Other Devices

The **VE-9x12** and **VE-9x20** provide the ultimate in weather protection for your **Viking** product or other telecom devices.

These enclosures are constructed of cast aluminum and are made for years of outdoor service. The heavy-duty aluminum doors are labeled "TELEPHONE" and have a gasket seal to keep out even the harshest weather. The **VE-9x12** allows you to choose from two panels that allow mounting many different **Viking** products.

Both the **VE-9x12** and **VE-9x20** are available in three high visibility colors: emergency red with silver lettering, safety yellow with red lettering, or black with silver lettering.



VE-9x20Y-0



VE-9x12R-0

The **VE-9x12(R/Y/B)-0** and **VE-9x20(R/Y/B)-0** are enclosures without adapter panel, ideal for mounting non-**Viking** products. These enclosures are available in all three colors and include a "Telephone" label.

Applications Include

- Parking Lots
- Playgrounds
- College Campuses
- Maintenance Areas
- Swimming Pools
- Roadside Help Areas
- Hospitals
- Building Exteriors
- Fueling Stations

Optional Accessories/Replacement Parts

VE-PBL: Push button lock and key set for any of the **VE-9x12** or **VE-9x20** enclosures.

VE-SPG: Hinge door return spring for use with the **VE-9x12** and **VE-9x20**. The **VE-9x20** includes a **VE-SPG**.

VE-9x12MK-1: Internal adapter panel 1 for the **VE-9x12**, see compatible products below.

VE-9x12MK-2: Internal adapter panel 2 for the **VE-9x12**, see compatible products below.

VE-9x20MK: Internal adapter panel for the **VE-9x20**.

Compatible Products

VE-9x12(R/Y/B)-0

Basic enclosure, no internal mounting panel included

VE-9x20(R/Y/B)-0

Basic enclosure, no internal mounting panel included

VE-9x12(R/Y/B)-1

E-20-IP
E-20B
E-1600-IP
E-1600A
E-1600-03B
E-1600-45A
E-1600-45-IP
E-1600-60A
E-1600-60-IP
E-1600-65A
E-1600-65-IP
K-1500P-W
K-1900W-2
W-2000A

VE-9x12(R/Y/B)-2

E-10-IP
E-10A
E-30
E-30-IP
E-30-PT
E-32-IP
E-35-IP
E-35
E-60-IP
E-60
E-1600-20-IP
E-1600-20A
E-1600-22-IP
E-1600-30-IP
E-1600-30A
E-1600-32-IP
W-1000
W-3000
W-3005

VE-9x20(R/Y/B)

K-1500-7
K-1900-6-IP
K-1900-7
K-1900-7-IP
K-1900-8
K-1900-8-IP

R = Red
Y = Yellow
B = Black

Model	Description
VE-9x12(R/Y/B)-0	Outdoor Enclosure
VE-9x12(R/Y/B)-1	Outdoor Enclosure
VE-9x12(R/Y/B)-2	Outdoor Enclosure
VE-9x20(R/Y/B)-0	Outdoor Enclosure
VE-9x20(R/Y/B)	Outdoor Enclosure
VE-PBL	Push Button Lock
VE-SPG	Door Return Spring
VE-9x12MK-1	VE-9x12 Adapter Panel 1
VE-9x12MK-2	VE-9x12 Adapter Panel 2
VE-9x20MK	VE-9x20 Adapter Panel

For more information on any of the products on this page, see **DOD# 413**



Vandal Resistant Surface Mount Boxes

The **VE-Series** surface mount boxes add vandal and weather resistance, as well as versatility to many **Viking** products. The **VE-Series** boxes are available in black fine texture powder painted steel or marine grade 316 stainless steel. These weather resistant boxes are designed to be surface mounted to a wall, post, single gang box, or a gooseneck pedestal and are perfect for surface mounting a variety of **Viking** products. See **DOD# 424** for specifications and a list of compatible products.



Model	Description	DOD #
VE-3x5	Black Surface Mount Box	424
VE-5x5	Black Surface Mount Box	424
VE-6x7	Black Surface Mount Box	424
VE-5x10	Black Surface Mount Box	424

Model	Description	DOD #
VE-5x5-SS	Stainless Steel Surface Mount Box	424
VE-6x7-SS	Stainless Steel Surface Mount Box	424
VE-5x10-SS	Stainless Steel Surface Mount Box	424

Surface Mount Boxes with Panels

Viking's VE-PNL's are the perfect solution to the problem of mounting a switch, keypad or card reader to the outside of a building. Available in black fine texture powder painted steel or marine grade 316 stainless steel, the back box provides a durable enclosure suitable for most outdoor applications. The blank front panel is made from aluminum, making it easy to drill, cut or form for the required mounting arrangement. The panel is straight lined and coated with a tough clear powder coating to resist corrosion. Four screws and a gasket are included to make installation a snap.



Model	Description	DOD #
VE-5x5-PNL	Black Box with Panel	424
VE-6x7-PNL	Black Box with Panel	424
VE-5x10-PNL	Black Box with Panel	424

Model	Description	DOD #
VE-5x5-PNL-SS	Stainless Steel Box with Panel	424
VE-6x7-PNL-SS	Stainless Steel Box with Panel	424
VE-5x10-PNL-SS	Stainless Steel Box with Panel	424

Illuminate Your Door or Emergency Phone

The **VE-LIGHT** kit adds bright LED illumination to any doorbox or entry phone that is housed in a **Viking VE-5x5, VE-6x7** or **E-1600A-BLT-EWP** surface mount box. The stainless steel bracket is easily mounted using existing holes and hardware.

VE-LIGHT shown alone below and in conjunction with the E-30 and VE-5x5 right



Model	DOD #
VE-LIGHT	428

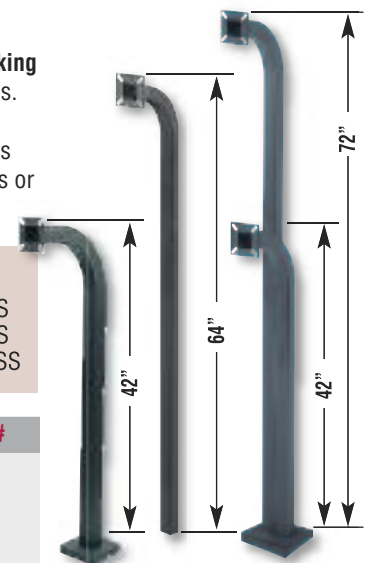
Gooseneck Pedestals

The gooseneck pedestals are designed to be used with select **Viking VE-Series** surface mount boxes or **VE-PNL** surface mount panels. Ideal for drive up communications, the gooseneck pedestals are constructed of heavy duty black powder painted steel or stainless steel. Pad mount to a floor or concrete with 4 available bolt holes or use the **VE-GNP-IG** to mount in ground or wet cement.

Compatible with the following Viking products:

- VE-5x5
- VE-5x5-SS
- VE-5x5-PNL
- VE-5x5-PNL-SS
- VE-6x7
- VE-6x7-SS
- VE-6x7-PNL
- VE-6x7-PNL-SS
- VE-5x10
- VE-5x10-SS
- VE-5x10-PNL
- VE-5x10-PNL-SS

Model	Description	DOD #
VE-GNP	42" Pad Mount Pedestal	424
VE-GNP-SS	42" Stainless Steel Pedestal	424
VE-GNP-IG	64" In-Ground Pedestal	424
VE-GNP-2	72" Double Pedestal	424
E-1600A-MK-GNP	VE-GNP Mounting Kit for E-1600A and E-1600-IP	227



Door Bell Button Panel

- Fits any standard single gang box
- Panels are made from unbreakable plastic
- Weather resistant gasket included
- Screw terminals on button for easy wiring
- Use with the **Viking VE-3x5** enclosure for surface mounting



Off-White or Dark Brown

Model	Finish	DOD #
DB40-BN	Dark Brown	189
DB40-WH	Off-White	189

Name Directories

Durable stainless steel finish is both economical and attractive. Easy to install with included hardware.

Model	# of Names (approx.)	DOD #
D6	6	158
D10	10	158
D22	22	158
D32	32	158
D44	44	158
D56	56	158



Replacement Faceplates

Update Your Viking Product to a New Faceplate Finish or Replace an Existing Damaged Faceplate

Replacement faceplates come in four different finishes and are coated with an extremely durable U.V. resistant powder paint designed for rugged outdoor use. Each faceplate comes with an LED light pipe and #6-32 x 1.25" flat head, 5/64" Hex drive, stainless steel screws with matching finish.

Model PNL40



Use with these Viking models:

E-40-BK	E-40-SS
E-40-BK-EWP	E-40-SS-EWP
E-40-BN	E-40-WH
E-40-BN-EWP	E-40-WH-EWP

Model	Finish	DOD #
PNL40-BK	Textured Black	188
PNL40-BN	Oil Rubbed Bronze	188
PNL40-SS	Stainless Steel	188
PNL40-WH	Satin White	188

Model PNL50



Use with these Viking models:

E-50-BK	E-50-SS
E-50-BK-EWP	E-50-SS-EWP
E-50-BN	E-50-WH
E-50-BN-EWP	E-50-WH-EWP

Model	Finish	DOD #
PNL50-BK	Textured Black	192
PNL50-BN	Oil Rubbed Bronze	192
PNL50-SS	Stainless Steel	192
PNL50-WH	Satin White	192

Model PNL60



Use with these Viking models:

E-60-BK	E-60-WH	E-60-SS-IP
E-60-BK-EWP	E-60-WH-EWP	E-60-SS-IP-EWP
E-60-BN	E-60-BK-IP	E-60-WH-IP
E-60-BN-EWP	E-60-BK-IP-EWP	E-60-WH-IP-EWP
E-60-SS	E-60-BN-IP	
E-60-SS-EWP	E-60-BN-IP-EWP	

Model	Finish	DOD #
PNL60-BK	Textured Black	209
PNL60-BN	Oil Rubbed Bronze	209
PNL60-SS	Stainless Steel	209
PNL60-WH	Satin White	209

Model PNL65



Use with these Viking models:

E-65-BK	E-65-SS
E-65-BK-EWP	E-65-SS-EWP
E-65-BN	E-65-WH
E-65-BN-EWP	E-65-WH-EWP

Model	Finish	DOD #
PNL65-BK	Textured Black	201
PNL65-BN	Oil Rubbed Bronze	201
PNL65-SS	Stainless Steel	201
PNL65-WH	Satin White	201

Model PNL70



Use with these Viking models:

E-70-BK	E-70-SS
E-70-BK-EWP	E-70-SS-EWP
E-70-BN	E-70-WH
E-70-BN-EWP	E-70-WH-EWP

Model	Finish	DOD #
PNL70-BK	Textured Black	200
PNL70-BN	Oil Rubbed Bronze	200
PNL70-SS	Stainless Steel	200
PNL70-WH	Satin White	200

Model PNL75



Use with these Viking models:

E-75-BK	E-75-SS
E-75-BK-EWP	E-75-SS-EWP
E-75-BN	E-75-WH
E-75-BN-EWP	E-75-WH-EWP

Model	Finish	DOD #
PNL75-BK	Textured Black	211
PNL75-BN	Oil Rubbed Bronze	211
PNL75-SS	Stainless Steel	211
PNL75-WH	Satin White	211



Door Entry and CCTV Camera Controller

Add One or Two Doorboxes to an Existing Phone Line and Provide CCTV Camera Control

The **C-1000B** allows single line phones or phone systems to share a phone line with one or two **Viking** doorboxes. The **C-1000B** provides two Touch Tone controlled relays to operate door strikes or gate openers and provides doorbox triggered CCTV camera switching. **Viking** doorboxes and paging amplifiers can be used on single line, residential or home office applications as well as on fully loaded systems, because they are no longer limited to installation on unused trunk ports.

- Allows two **Viking** doorboxes to share a single telephone line with a residential or business telephone system
- Doorbox triggered CCTV camera switching
- Custom ringing mode allows you to distinguish doorbox calls from C.O. calls
- Compatible with **Viking's** Single Line Paging Controllers, model **SLP-1** or **SLP-4** (page 20)
- Call waiting tones indicate which doorbox is calling and distinguish a doorbox call from a C.O. line call
- Calls can be placed on hold when visitors call from the doorbox



- Provides two touch tone controlled N.O. or N.C. dry relay contacts (5 Amp rating) for door strikes or gate openers
- Keyless entry/postal lock input
- Built-in talk battery for "No C.O. Line" applications
- Auxiliary contact output for doorbells, lights, etc.

Model	DOD #
C-1000B	168

Compatible with one or two of the following **Viking** doorbox models:

- **W-1000**
- **W-2000A**
- **W-3000**
- **W-3005**

Handsfree Doorboxes

Answer Your Door or Gate from the Safety of Any Phone in Your Home or Business

- Connect to a phone system's unused trunk input, FXO port or a **Viking C-1000B** controller (above)
- Blue call progress/night light LED (**W-1000/W-3000**)
- High output speaker amplifier with volume adjustment
- Microphone volume adjustment POT
- 24 Volt talk battery
- 20 Hz ring generator (6.0 REN ring load maximum)
- Selectable ring cadence: standard, double, short/short/long, or short/long/short
- Selectable number of rings: 2, 3, 10 or 30
- Selectable "Push-to-Talk" feature for noisy environments
- Operating temperature range: -15°F to 130°F



W-1000
Faceplate: Vandal resistant 12 gauge louvered aluminum with weather resistant black textured powder paint. Optional surface mount box available, model **VE-5X5** (page 33).



W-2000A
Chassis: Impact resistant, UV stable, light grey plastic with black UV stable pad printed graphics. Surface mount only.



W-3000
Faceplate: Vandal resistant 14 gauge louvered 316 marine grade stainless steel with #4 brushed finish and laser etched graphics. Optional **VE-5X5** surface mount box available (page 33).

Model	DOD #	EWP
W-1000	170	Available
W-2000A	170	
W-3000	170	

What is EWP? When installing Viking products outdoors, always use the EWP version, see page 31

Viking's handsfree doorboxes are available in three different chassis configurations and are designed to interface directly with an unused analog telephone line input of a phone system. One or two doorboxes can also share an existing phone line when used with a **C-1000B** doorbox controller. When the "Call" button is pressed, the doorbox generates a standard or custom ring cadence.

Handsfree Video Doorbox

- Built-in high resolution color video camera with wide viewing angle and tilt/swivel adjustments
- Audio and video transmission on one Cat-5e cable
- For additional features, see model **W-3000** (above)
- 14 gauge louvered 316 marine grade stainless steel faceplate, screws and heavy duty "Call" button
- Optional **VE-5X5** surface mount box available (page 33)

Model	DOD #	EWP
W-3005	181	Available

What is EWP? When installing Viking products outdoors, always use the EWP version, see page 31



Vandal Resistant Handsfree Entry Phones with Built-In Keypads

- Available with Analog or **VoIP** Interface
 - Available in two finishes: Brushed Stainless Steel or Oil Rubbed Bronze (BN)
 - All models available with **Enhanced Weather Protection (EWP)**
 - Blue "Call/Status" LED indicator
 - Flush mount with the included zinc plated steel rough-in box
 - Surface mount with an optional **VE-6x7** surface mount box (Page 33)
- Vandal Resistant Features:**
- 14 gauge louvered 316 stainless steel faceplate
 - Permanent laser etched graphics
 - Stainless steel "Call" button and heavy duty keypad
 - T-10 Torx security mounting screws

Analog Features and Operation

- Telephone line powered
- Can be connected to CO line, analog PABX station, or FXS port
- Advanced call progress detection: disconnects on busy signal, return to dial tone, CPC, reorder tone, maximum call time out, and 40 second silence time out
- Selectable auto-answer feature for monitoring
- Selectable push button disconnect
- Adjustable microphone and speaker volume
- Optional **VE-6x7** Surface Mount Box available (page 33)
- Programmable VOX (mic/speaker) switching speed

Compatible Viking Controllers:

- C-500 (pg 41)
- C-3000 (pg 37)
- K-1900-3 (pg 37)
- C-2000B (pg 41)
- C-4000 (pg 37)
- SRC-1 (pg 40)

VoIP Features and Operation

- Two sets of 2 Amp relay contacts for door or gate control
- SIP compliant and PoE powered (class 2, <6.5 Watts)
- Automatic Noise Canceling (ANC) feature
- **VoIP** eliminates the need for "Push to Talk" mode
- Network downloadable firmware
- Programmable to speed dial up to 250 numbers
- Cycles to roll over phone number on busy or no-answer
- Program up to 1,000 keyless entry codes and/or proximity card numbers
- Keyless entry codes and proximity card numbers can be programmed to only allow access at specific times and day of week
- Event logging with time and date stamp
- Hangs up on busy signal, time-out, or touch tone command
- Remotely programmable
- Volume adjustments for microphone and speaker

Built-in Controller

Entry Phone

For Analog and **VoIP** Features and Operation refer to section above



What is EWP? When installing Viking products outdoors, always use the EWP version, see page 31

Analog Model	Finish	DOD#	EWP
K-1700-3	Stainless Steel	157	Available
K-1700-3-BN	Oil Rubbed Bronze	157	
VoIP Model	Finish	DOD#	EWP
K-1700-IP	Stainless Steel	253	Available
K-1700-BN-IP	Oil Rubbed Bronze	253	

Video Entry Phone

For Analog and **VoIP** Features and Operation refer to section above

Built in color composite video camera with 420 lines of resolution and wide 70° viewing angle.



What is EWP? When installing Viking products outdoors, always use the EWP version, see page 31

Analog Model	Finish	DOD#	EWP
K-1705-3	Stainless Steel	159	Available
K-1705-3-BN	Oil Rubbed Bronze	159	
VoIP Model	Finish	DOD#	EWP
K-1705-IP	Stainless Steel	254	Available
K-1705-BN-IP	Oil Rubbed Bronze	254	

Entry Phone with Proximity Card Reader

For Analog and **VoIP** Features and Operation refer to section above

Built in 125KHz compatible 26-bit Wiegand proximity card reader



What is EWP? When installing Viking products outdoors, always use the EWP version, see page 31

Analog Model	Finish	DOD#	EWP
K-1770-3	Stainless Steel	275	Available
K-1770-3-BN	Oil Rubbed Bronze	275	
VoIP Model	Finish	DOD#	EWP
K-1770-IP	Stainless Steel	257	Available
K-1770-BN-IP	Oil Rubbed Bronze	257	

Video Entry Phone with Proximity Card Reader

For Analog and **VoIP** Features and Operation refer to section above

Built in color composite video camera and 125KHz compatible 26-bit Wiegand proximity card reader



What is EWP? When installing Viking products outdoors, always use the EWP version, see page 31

Analog Model	Finish	DOD#	EWP
K-1775-3	Stainless Steel	280	Available
K-1775-3-BN	Oil Rubbed Bronze	280	
VoIP Model	Finish	DOD#	EWP
K-1775-IP	Stainless Steel	258	Available
K-1775-BN-IP	Oil Rubbed Bronze	258	



12 Button Apartment Entry Phone with Built in Door Strike Relay

- Calling a tenant is as easy as pressing a single button
- 50 Keyless Entry Codes

The **K-1200** Entry Phone is a two way, hands free telephone with 12 buttons for calling individual residences in an apartment building. The rugged marine grade 316 stainless steel faceplate has a printed directory housed in a waterproof plastic lens. Each button is beside the tenant's name in the directory, so there are no confusing codes to deal with. The **K-1200** has a built in speed dialer that can handle up to 12 primary phone numbers, each with 22 digits. If there is no answer at the first number, a second number such as a tenant's cell phone can be called automatically. Once the tenant answers their phone, a single touch tone command can activate the built in door strike relay. Power supply included.



K-1200 shown in optional **VE-5x10-SS** surface mount box (page 33)

K-1205 shown in optional **VE-5x10-SS** surface mount box (page 33)

Model	DOD #	EWP
K-1200	182	Available
K-1205	183	

What is EWP? When installing Viking products outdoors, always use the EWP version, see page 31

Apartment/Office Door Entry 250 Number Dialer

- Programmable keyless entry code for each apartment or office
- Output for external data logging
- "Buzz" the visitors in from your phone
- Non-volatile E² memory (no batteries required)
- Also provides 5 additional keyless entry codes for management, maintenance, etc.

Use with: K-1775-3
K-1700-3 K-1900-8
K-1705-3 or any touch
K-1770-3 tone phone



Model **K-1900-3** allows the visitor to enter 1 to 3 digits on a Touch Tone phone located in the entry way. The **K-1900-3** then dials the associated apartment. After conversing with the visitor, the tenant can "Buzz" them in by dialing a 1 or 2 digit code on their Touch Tone phone. An adjustable timed relay closure is provided for gate openers or door strikes. DPDT 5 Amp relay contacts are provided. The **K-1900-3** can be programmed remotely using a Touch Tone phone or locally from the entry phone. Power supply included.

Model	DOD #
K-1900-3	312

No C.O. Line Entry System for 12 Apartments/Offices

- Functions with or without tenant C.O. lines
- Expands to 96 apartments by adding more C-3000's (each C-3000 adds 12 additional apartments)

Eliminates the monthly expenses of an entry phone line and CO "call waiting" feature on tenant's lines. Connect a front and rear touch tone entry phone. The **C-3000** rings the tenant's phone or provides call waiting tones. The tenant can "Buzz" the visitor in from their touch tone phone via the front and rear door strike contacts. Power supply included.

Model	DOD #
C-3000	162

Use with: K-1705-3
AES-2000 K-1770-3
AES-2005 K-1775-3
K-1200 K-1900-8
K-1205 or any touch
K-1700-3 tone phone



4 Door Keyless or PRX Card Entry System for Up To 250 Tenants

- Connect up to four Touch Tone Entry Phones
- Requires an analog PABX, CO line or FXS port to call tenants
- Supports 4 Wiegand keypad or card readers
- **RS-232** port for programming
- "Buzz" visitors in from tenants phone – N.O. & N.C. contacts
 - Output for external logging
 - Program locally or remotely
 - Provides toll restriction - can allow 911 and 311 calls
 - Power supply included

Model	DOD #
C-4000	164

Use with: K-1775-3
K-1700-3 K-1900-8
K-1705-3 or any touch
K-1770-3 tone phone



125 KHz Proximity Card Reader

- Standard 26-bit Wiegand interface
- Potted PCB for **Enhanced Weather Protection** (page 31)
- Pigtail connection for indoor and outdoor applications
- Black and ash (off white) covers included

Model	DOD #
PRX-1	221



Stand-Alone Keyless Entry System

- 1 door with up to 250 users
- Use with a Card Reader or Keypad
- Standard 26-bit Wiegand interface
- Program with a touch-tone phone
- Output for data logging

Model	DOD #
ES-1	193



- Power supply included
- Also see **C-4000** (Page 37)

Keypad with Built-in 125 KHz Proximity Card Reader

Model **PRX-2** is equipped with **Enhanced Weather Protection** (page 31) and mounts directly to a standard single gang box. Both the card reader and keypad transmit 26-bit Wiegand format data, and the keypad features blue backlighting. Black and ash (off-white) covers included.

Model	DOD #
PRX-2	219



125 KHz Proximity Cards

- No magnetic strip to wear out – no batteries
- Credit card size, neckband slot on **PRX-C**
- New thinner, more flexible **PRX-C-ISO**
- No minimum quantities

Model	DOD #
PRX-C	198
PRX-C-ISO	198



16" Range Proximity Card Reader

Model **PRX-3** permits reading standard 125 KHz proximity cards up to 16 inches from the reader. It is ideal for parking control, gate access, turnstiles, or any application requiring a longer read range. The **PRX-3** provides data in the standard 26-bit Wiegand format.

The **PRX-3** is equipped with **Enhanced Weather Protection** (page 31) for outdoor installations. Install alone or with Viking Door Entry phones on **VE-GNP** pedestals. Power supply included.

Model	DOD #
PRX-3	228



125 KHz Proximity Key Fob

- Attach to a key chain or neckband
- Compact size: 1.5 x 1.2 x 0.15 inches
- Durable - it can withstand the washing machine
- Read up to 2" with **PRX-1** or 8" with **PRX-3**
- No minimum quantities

Model	DOD #
PRX-FOB	198



Wiegand Keypad

- Slender aluminum housing for mullion mounting
- Pigtail leads
- Beeper and LEDs show status
- 26-bit Wiegand interface
- Potted PCB for **Enhanced Weather Protection** (page 31)
- Dimensions: 7.1" x 1.7" x 0.5"

Model	DOD #
PRX-4	199



Mounting Kits for VE-GNP Pedestals

PRX-3-MK-GNP for mounting **PRX-3** alone

PRX-3-MK-VEGNP for mounting **PRX-3** plus a **VE-5x5**, **VE-6x7**, or **VE-5x10**

Model	DOD #
PRX-3-MK-GNP	229
PRX-3-MK-VEGNP	229



PRX-3-MK-GNP



PRX-3-MK-VEGNP

Accessible Entry System

Usable by people with sensory and physical impairments

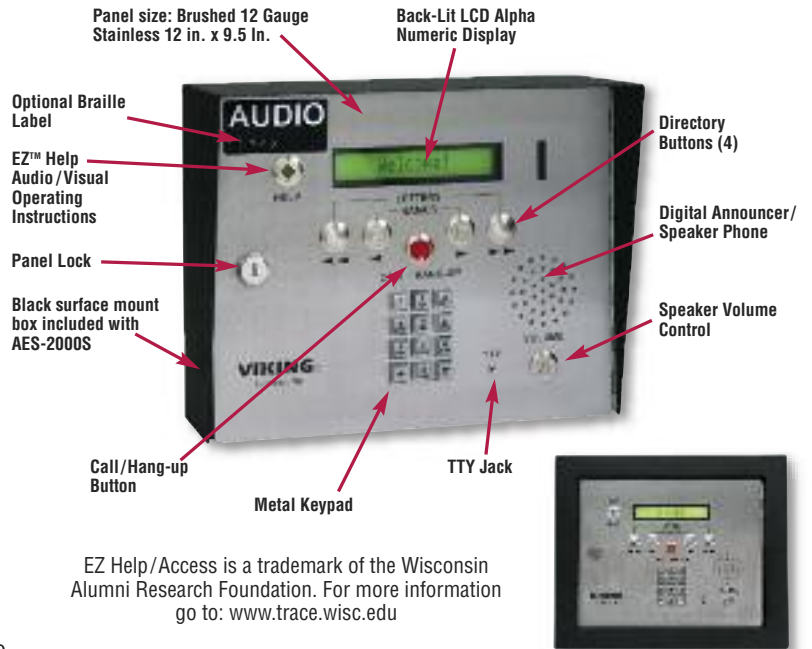
The Accessible Entry System is a hands-free phone with a built in auto-dialer, which will allow access to apartment/office buildings by using existing public telephone lines. In order to assist people of varying abilities, the "directory" is displayed on the LCD screen and an audible announcement is played.

The system is housed behind a marine grade 316 stainless steel panel with metal keypad and control buttons. Power supply included.

Features:

- Supports up to 525 tenant names and phone numbers
- Data logging via the **PB-100**
- Non-volatile memory
- Door strike contacts
- Postal lock input
- Remote recording and programming
- Designed to help meet ADA requirements
- Model **AES-2005** also features a built-in high resolution color video camera, see page 30 for camera information
- **PB-100** required for programming (see below)

Model	Description	DOD #
AES-2000S	Surface Mount Entry System	202
AES-2000F	Flush Mount Entry System	202
AES-2005S	Surface Mount Video Entry System	204
AES-2005F	Flush Mount Video Entry System	204
ERAM-4M	Expansion Memory	854



AES-2000F Flush Mount
(Mounting bezel and back box included)

Applications:

- Apartment/Office Buildings
- Assisted Living Residences
- Nursing Homes
- Hospitals
- Public Housing
- Models **AES-2005S** and **AES-2005F** come with a built-in color composite video camera (see page 30 for camera specifications)

Add Up To 32 Access Entry Points To Viking's Accessible Entry System

Up to 32 additional points of entry may be added to Viking's model **AES-2000** Accessible Entry System. One **ES-3**, one Wiegand device and a door strike or magnetic lock of your choice is required for each additional entry point. Power supply included.

Model	DOD #
ES-3	195



P.C. to Phone Line Interface/Controller

- Windows compatible software included
- Remote Programming of AES-2000 Entry System (above)
- Hotel/Motel wake up application on the CD ROM
- Emergency phone polling/programming application

The **PB-100** connects to a serial or USB port on your P.C. and also to an analog phone line. The **PB-100** accepts ASCII commands to seize the phone line, watch for busy, and to send and receive Touch Tones or data. If the P.C. is equipped

Model	DOD #
PB-100	232

with a sound card, the audio input and output can be coupled to the phone line. CD ROM is included with programs to do emergency phone polling, **AES-2000** programming, hotel/motel wake up dialer or design your own voice announcer, message center, etc. Power supply included.



Secure Remote DTMF Controller

The **SRC-1** enables a standard touch tone phone to securely operate a set of timed 5 Amp relay contacts to control a door strike or gate controller from a remote location. The **SRC-1** is fully user programmable and uses non-volatile memory. The **SRC-1** eliminates the possibility of dialing the activation code through the entry phone using a hand held touch tone dialer. The **SRC-1** features switchable 32 Volt talk battery to allow use with any of **Viking's** Entry Phones and Doorboxes. A postal lock input is provided. Power supply included.

Model	DOD #
SRC-1	176



Remote DTMF Controller for a Single Relay

- Programmable access code
- Normally open or normally closed relay
- Selectable relay operation times
- Easy installation

The **RC-2A** provides remote relay operation from any standard Touch Tone telephone. The controller is designed to be installed either locally or remotely. For local installations the **RC-2A** can be installed in parallel on any analog communications path, such as analog C.O. lines or analog PABX/KSU stations and will passively monitor for Touch Tone commands. For off-premise applications, the **RC-2A** will answer analog C.O. lines or PABX/KSU stations after a selectable ring delay. A field programmable access code can be programmed to prevent unauthorized usage, and then the **RC-2A** can be activated to allow remote relay operation. Power supply included.

Model	DOD #
RC-2A	160



Remote DTMF Controller for 3 Relays

- Operational commands can be customized 1, 2 or 3 digits in length
- Relay interrogation tones
- Programmable relay timed closures
- Cascade up to three RC-3 units to control up to nine relays

The **RC-3** enables a standard Touch Tone phone to control up to 3 maintained ON, maintained OFF, or momentary relay contacts from a remote location. The **RC-3** is fully user programmable and uses non-volatile E² memory. Up to three **RC-3's** can be daisy chained on the same line to control up to nine relays. The **RC-3** features switchable 32V talk battery allowing easy installation on a trunk port. In addition, the unit can be connected directly to a C.O. line or analog PABX/KSU station. Power supply included.

Model	DOD #
RC-3	165



Network Enabled Relay Controller

- Notification by email or text message of sensor input state change
- Can be used as a secure remote relay for Viking VoIP phones
- Ready-to-use webpage control interface
- Encrypted login
- Relay names, input names, and input status can be customized on webpage

The **RC-4A** Network Enabled Relay Controller provides networked control of four relays via an easy-to-use web interface. The same interface can be used to check the status of four contact closure inputs. Relays can be toggled on or off, or user-programmed timed closures can be activated. The **RC-4A** can be configured to work as a remote relay for **Viking VoIP** series phones, controlling door strikes and gates when a remote relay is required for security reasons. It can also be programmed to send an email or text message in response to a change in one or more of the sensor inputs. Two **RC-4A's** can be set up so that activity on a sensor input of one unit will automatically activate one of the relays on the other unit. Power supply included.

Model	DOD #
RC-4A	582



Single Entry Phone Interface

Allows Your House Phones or Phone System to Share a Phone Line with one Viking Entry Phone

The **C-200** allows a single line telephone or a telephone system to share a phone line with a single **Viking** Entry phone. When a visitor presses the call button on the entry phone, the resident's phone rings. The resident can now answer and converse with the visitor prior to manually allowing entry. If you are on a call, the **C-200** provides a "Call Waiting" tone. The resident can "hook flash" which puts the call on hold while he converses with the visitor. Power supply included.

Model	DOD #
C-200	169

Compatible with Viking Analog Entry Phones or any Analog Phone



Single Entry Phone Controller With Call Forwarding and Door Strike Control

- 5 Amp door strike or gate opener contact
- Immediate call forward mode
- Built in 5 number dialer, 1- 20 digit
- No CO mode

The **C-250** allows single line phones or a phone system to share a phone line with a **Viking** entry phone. When the entry phone initiates a call, the **C-250** provides a double ring. If you are on a call the controller provides call waiting tones. You can place the existing call on hold, talk to the visitor, then return to the original caller. Buzz the visitor in with a 1 or 2 digit touch tone command. The **C-250** allows tenants to monitor the entry phone and has a postal lock input. Power supply included.

Model	DOD #
C-250	172

Compatible with Viking Analog Entry Phones or any Analog Phone



Advanced Two Door Entry Phone Controller with Call Forwarding and Door Strike Control

- No CO mode
- Analog station mode
- Immediate call forward mode
- 6 keyless entry codes per door
- Programmable caller ID
- Expandable to 4 controllers for up to 8 entry phones

The **C-500** allows single line phones or a phone system to share a phone line with two **Viking** entry phones. When the entry phone initiates a call, the **C-500** provides distinctive ring. If you are on a call the controller provides call waiting tones. You can place the existing call on hold, talk to the visitor, then return to the original caller. Buzz the visitor in with a 1 or 2 digit touch-tone command. The **C-500** allows tenants to monitor either phone, has two trigger inputs, 5 Amp door strike or gate opener contacts and programmable entry phone caller ID. Power supply included.

Model	DOD #
C-500	177

Compatible with Viking Analog Entry Phones or any Analog Phone



Advanced Door/Gate and Entry Phone Controller for up to 4 Locations

- Analog station dial through mode for apartment/office entry applications
- Provides 6 different keyless entry codes per door and 6 master codes (use at any door)
- Codes can be set as permanent or "1 time" use
- Provide 4 unique CD quality door chimes plus whole house paging when used with the SLP-4 (page 20)

Answer and open up to 4 doors or gates from your nearest phone. The **C-2000B** can provide a double ring and/or caller ID to indicate which entry phone is calling. If you are on a call the controller provides call waiting tones and caller ID. You can place the existing call on hold, talk to the visitor, then return to the original caller. The unit can ring up to 16 existing phones. Programmable "Privacy Number" eliminates prank calls. The **C-2000B** allows the user to monitor any entry phone with auto answer capability. Add proximity card entry with **Viking** model **ES-1** and **PRX-1** (Page 38). Power supply included.

Model	DOD #
C-2000B	156

Compatible with Viking Analog Entry Phones or any Analog Phone



Entry Phones

- Available with Analog or VoIP Interface
- Convenient Handsfree Communication
- All models available with Enhanced Weather Protection (EWP)
- Optional **VE-5x5** surface mount box (page 33) available for flush mount models shown to the right



E-10A/E-10-IP
Flush Mount Black Powder Painted Aluminum



E-20B/E-20-IP
Surface Mount UV Stable Plastic Chassis



E-30/E-30-IP
Flush Mount Brushed 316 Stainless Steel



E-32-IP
Flush Mount Brushed 316 Stainless Steel

Analog Features and Operation

- Telephone line powered
- Can be connected to CO line, analog PABX station, or FXS port
- Intelligent call progress detection for automatic hang-up on CPC, silence, busy signal, or time out
- Alternate action call button to place or cancel a call
- Adjustable microphone and speaker volume
- Programmable maximum call length
- Selectable auto-answer feature allows remote monitoring
- Two way handsfree communication
- Programmable VOX (mic/speaker) switching speed
- Compatible Viking controllers: **C-200** (pg 41), **C-250** (pg 41), **C-500** (pg 41), **C-2000B** (pg 41), and **SRC-1** (pg 40)

VoIP Features and Operation

- 2 Amp relay contacts for door or gate control
- SIP compliant and PoE powered (class 1, <4 Watts)
- Automatic Noise Canceling (ANC) feature
- **VoIP** eliminates the need for "Push to Talk" mode
- Network downloadable firmware
- Handsfree operation
- Programmable to dial up to 5 numbers on busy or ring no answer
- Hangs up on busy signal, time-out or touch tone command
- Remotely programmable
- Volume adjustments for microphone and speaker

Analog Model	DOD #	EWP
E-10A	210	Available
E-20B	210	
E-30	212	

What is EWP? When installing Viking products outdoors, always use the EWP version, see page 31

VoIP Model	DOD #	EWP
E-10-IP	248	Available
E-20-IP	248	
E-30-IP	248	
E-32-IP	248	

What is EWP? When installing Viking products outdoors, always use the EWP version, see page 31

Single Gang Analog Entry Phones

For Analog Features and Operation refer to section above

- Vandal resistant 18 gauge 304 stainless steel faceplate
- Blue LED helps locate the push button, as well as indicate ringing and off-hook
- Compact size for flush mounting in a single gang box: 4.87"H x 3.12"W x 1.7"D
- Surface mount with an optional **VE-3x5** surface mount box (Page 33)
- Replacement faceplates available in all finishes (Page 34)

Model	Finish	DOD #	EWP
E-40-SS	Stainless Steel	187	Available
E-40-BN	Oil Rubbed Bronze	187	
E-40-WH	Satin White	187	
E-40-BK	Textured Black	187	

What is EWP? When installing Viking products outdoors, always use the EWP version, see page 31

Four Finishes Available
Stainless Steel finish shown right

Oil Rubbed Bronze



Satin White



Textured Black



Single Gang Analog Video Entry Phones

For Analog Features and Operation refer to top of this page

- Built in color composite video camera with 420 lines of resolution (Page 30)
- Audio and video transmission on one Cat-5e cable (150 ft. maximum video)
- Compact size for flush mounting in a single gang box: 4.87"H x 3.12"W x 1.7"D
- Surface mount with an optional **VE-3x5** surface mount box (Page 33)
- Camera power supply included

Model	Finish	DOD #	EWP
E-50-SS	Stainless Steel	191	Available
E-50-BN	Oil Rubbed Bronze	191	
E-50-WH	Satin White	191	
E-50-BK	Textured Black	191	

What is EWP? When installing Viking products outdoors, always use the EWP version, see page 31

Four Finishes Available
Stainless Steel finish shown right

Oil Rubbed Bronze



Satin White



Textured Black



Double Gang Analog and VoIP Entry Phones

For Analog and VoIP Features and Operation refer to top of page 42

- Vandal resistant 18 gauge 304 stainless steel faceplate
- Blue LED helps locate the push button, as well as indicate ringing and off-hook
- Sized to flush mount in a standard double gang box: 4.87" x 4.94" x 1.7"
- Surface mount with an optional VE-5x5 surface mount box (Page 33)
- Replacement faceplates available in all finishes (Page 34)

Analog Model	DOD #	EWP	VoIP Model	DOD #	EWP
E-60-SS	206	Available	E-60-SS-IP	250	Available
E-60-BN	206		E-60-BN-IP	250	
E-60-WH	206		E-60-WH-IP	250	
E-60-BK	206		E-60-BK-IP	250	

What is EWP? When installing Viking products outdoors, always use the EWP version, see page 31



Double Gang Analog Video Entry Phones

For Analog Features and Operation refer to top of page 42

- Built in color composite video camera with 420 lines of resolution (Page 30)
- Audio and video transmission on one Cat-5e cable (150 ft. maximum video)
- Sized to flush mount in a standard double gang box: 4.87" x 4.94" x 1.7"
- Surface mount with an optional VE-5x5 surface mount box (Page 33)
- Camera power supply included

Analog Model	Finish	DOD #	EWP
E-65-SS	Stainless Steel	203	Available
E-65-BN	Oil Rubbed Bronze	203	
E-65-WH	Satin White	203	
E-65-BK	Textured Black	203	

What is EWP? When installing Viking products outdoors, always use the EWP version, see page 31



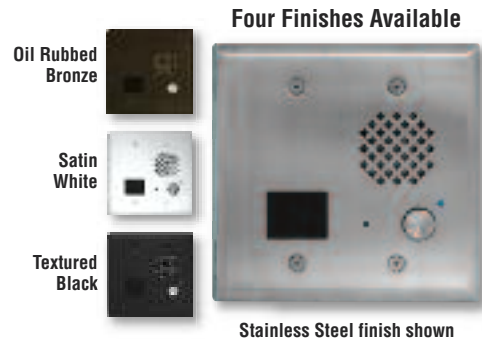
Double Gang Analog Entry Phones with Integrated Proximity Card Reader

For Analog Features and Operation refer to top of page 42

- Built in 125KHz compatible 26-bit Wiegand proximity card reader (see page 38 for other proximity card compatible products)
- Sized to flush mount in a standard double gang box: 4.87" x 4.94" x 1.7"
- Surface mount with an optional VE-5x5 surface mount box (Page 33)
- Replacement faceplates available in all finishes (Page 34)

Analog Model	Finish	DOD #	EWP
E-70-SS	Stainless Steel	207	Available
E-70-BN	Oil Rubbed Bronze	207	
E-70-WH	Satin White	207	
E-70-BK	Textured Black	207	

What is EWP? When installing Viking products outdoors, always use the EWP version, see page 31



Double Gang Analog Video Entry Phones with Integrated Proximity Card Reader

For Analog Features and Operation refer to top of page 42

- Built in color composite video camera with 420 lines of resolution (Page 30)
- Audio and video transmission on one Cat-5e cable (150 ft. maximum video)
- Built in 125KHz compatible 26-bit Wiegand proximity card reader
- Sized to flush mount in a standard double gang box: 4.87" x 4.94" x 1.7"
- Surface mount with an optional VE-5x5 surface mount box (Page 33)

Analog Model	Finish	DOD #	EWP
E-75-SS	Stainless Steel	208	Available
E-75-BN	Oil Rubbed Bronze	208	
E-75-WH	Satin White	208	
E-75-BK	Textured Black	208	

What is EWP? When installing Viking products outdoors, always use the EWP version, see page 31



Viking Electronics, Inc.

1531 Industrial Street
Hudson, Wisconsin 54016

Printed in the USA

Address Service Requested

Viking products are in stock at these Distributors in the US and Canada:

ADI
800-233-6261 www.adilink.com

Graybar
800-825-5517 www.graybar.com

Jenne
800-422-6191 www.jenne.com

Anixter
800-323-8167 www.anixter.com

TeleDynamics
800-847-5629 www.teledynamics.com

Tri-Ed
888-874-3336 www.tri-ed.com

CSC
877-462-7279 www.gocsc.com

Target Distributing
800-873-5528 www.targetd.com

Hall Telecommunications
519-822-5420 www.halltel.com
Toll free in Canada: 800-265-2667

Capitol
800-467-8255 www.capitolsales.com

GoldCom
800-788-8848 www.goldcom.us

High-Tech Communications
800-256-3010 www.high-techcomm.com

KGP Logistics
800-755-1950 www.kgplogistics.com

Rexel
800-637-3972 www.rexelusa.com

Power & Tel
800-238-7514 www.ptsupply.com

NEW Analog and VoIP
Tower Phones
page 6

NEW SIP Loud Ringer
page 19

NEW Networked Clock
Controlled Tone/Message
Generator
page 21

NEW Analog and VoIP
Emergency Panel Phones
page 7

NEW Analog and VoIP
Entry Phone Systems
page 36

NEW Network
Enabled Relay
Controller
page 40

NEW Analog
and VoIP
Entry Phone
Systems
page 36

NEW VoIP
Emergency
Phones
pages 4-9

NEW VoIP
Panel Phones
page 13



Outside of the USA and Canada contact:
Viking International: +1-715-386-3794
Email: vikinginternational@vikingelectronics.com

Call: 715-386-8861
Email: info@vikingelectronics.com
Visit: www.vikingelectronics.com