

FLORAL EXPOSITIONS

PROFESSIONAL FLORAL DESIGNS A-Z: ORDER ON PAGE 6



A1
4" round
\$35.00 each



A2
4" round
\$35.00 each



A3
4" square
\$35.00 each



B
5" tall x 4" wide
\$45.00 each



C
6" tall x 5" wide
\$60.00 each



D
6" tall x 5" wide
\$65.00 each



E
6" tall x 5" wide
\$65.00 each



F1
6" tall x 4" wide
\$45.00 each



F2
6" tall x 4" wide
\$45.00 each



G1
6" tall x 5" wide
\$50.00 each



G2
6" tall x 5" wide
\$50.00 each



G3
6" tall x 5" wide
\$50.00 each



H
10-14" tall x 5-6" wide
\$65.00 each



I1
7" tall x 5-6" wide
\$85.00 each



I2
7" tall x 7-8" wide
\$85.00 each



J
16-18" tall x 10" wide
\$95.00 each

Please note seasonal adjustments may apply to the above arrangements.

Customized floral arrangements are also available for your Booth, Hospitality Suite, Off-site Functions and Banquets.

Please reach out to our design team to get a quote!

***Discount pricing only applies to orders received and paid in full thirty days prior to Exhibitor Move In**

FLORAL EXPOSITIONS

PROFESSIONAL FLORAL DESIGNS A-Z: ORDER ON PAGE 6



K

8" tall x 8" wide
\$85.00 each



L

12" tall x 10-12" wide
\$85.00 each



M

10" tall x 10" wide
\$95.00 each



N

12" tall x 10-12" wide
\$95.00 each



O

12" tall x 12-14" wide
\$125.00 each



P

12" tall x 10-12" wide
\$125.00 each



Q

12" tall x 10-12" wide
\$135.00 each



R

14-16" tall x 6" wide
\$135.00 each



S

16-18" tall x 6" wide
\$95.00 each



T

16-18" tall x 8" wide
\$135.00 each



U

16-18" tall x 8" wide
\$135.00 each



V

16-18" tall x 10" wide
\$150.00 each



W

18-20" tall by 12" wide
\$135.00 each



X

14" tall x 6" wide
\$120.00 each



Y

14" tall x 6" wide
\$120.00 each



Z

20-24" tall x 16-18" wide
\$175.00 each

Please note seasonal adjustments may apply to the above arrangements.

**Discount pricing only applies to orders received and paid in full thirty days prior to Exhibitor Move In*

FLORAL EXPOSITIONS

GREEN PLANTS 3' - 8': ORDER ON PAGE 6



2-3'
Arb



2 - 3'
Spath



2 - 3'
Palm



2 - 3'
Snake Plant



2-3'
Croton

Specialty Plant Options:



4 - 6'
Areca Palm



4 - 6'
Bamboo Palm



5 - 6'
Ficus Tree



5 - 6'
Fiddle Fig Tree



8 - 10'
Andonidia Palm

**Discount pricing only applies to orders received and paid in full thirty days prior to Exhibitor Move In*

FLORAL EXPOSITIONS

BLOOMING, FERNS, IVY & POTHOS: ORDER ON PAGE 6



Fern



Ivy



Pothos



Kalanchoe



Bromeliads

SPECIALTY DESIGNS : ORDER ON PAGE 7



Option 1

Colorful blooming potted in 42" long white planter
(total height about 14" - 16")



Option 2

3' Green plant
potted in 30" tall
square planter



Option 3

2' Snake plant
potted in 30" tall
square planter



Option 4

3' Green plants potted in
40" long rectangular planter
(total height about 4.5')



Option 5

2' Snake plants potted in
40" long rectangular planter
(total height about 4')



Option 6

38" Long x 15" Tall Black Planter Box
(can be filled with 3-6' Tall Plants)



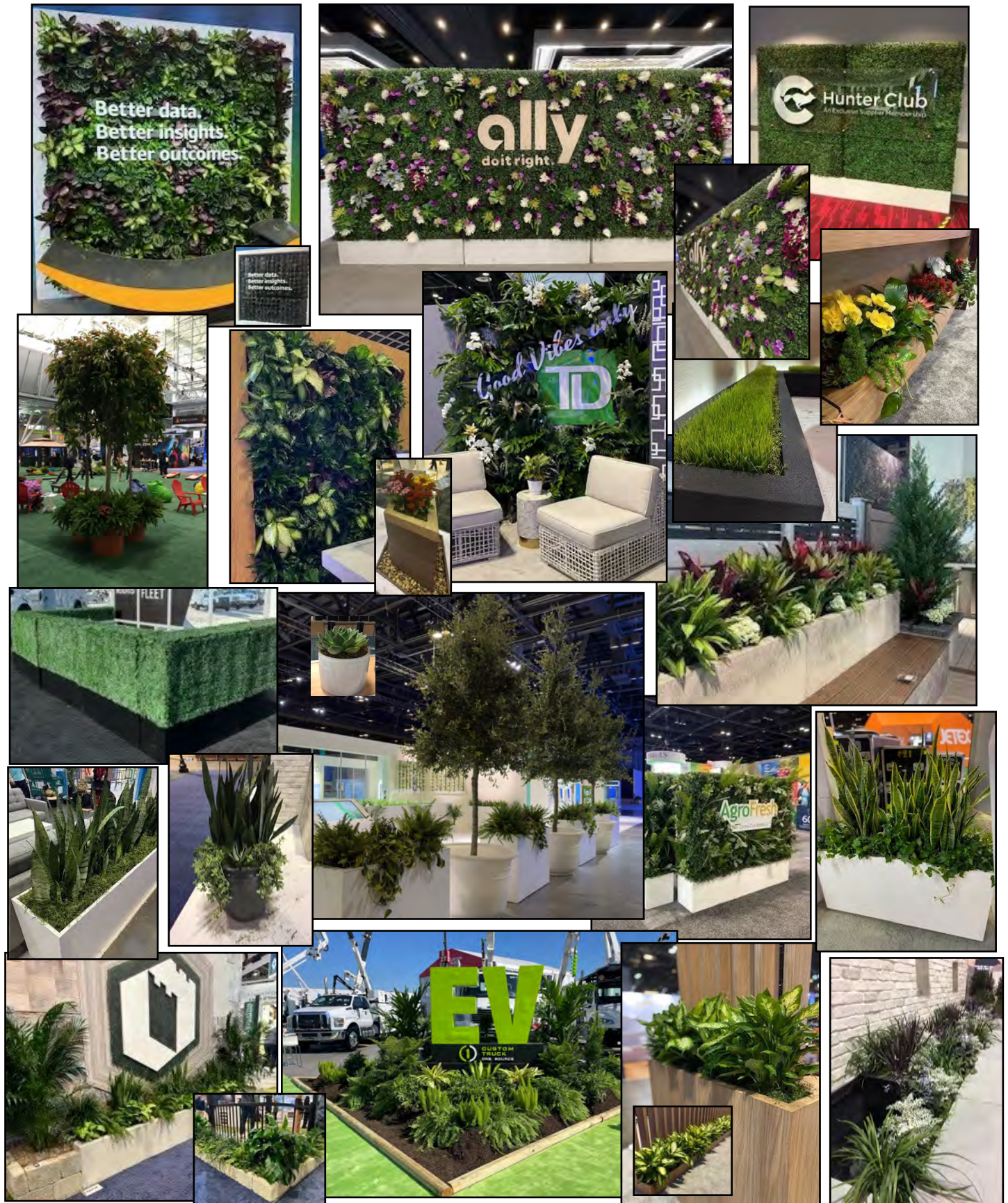
Option 7

38" Long x 15" Tall Black Planter Box
(can be filled with 3-6' Tall Plants)



**Discount pricing only applies to orders received and paid in full thirty days prior to Exhibitor Move In*

CONTACT OUR DESIGN TEAM FOR CONCEPT DESIGNS



**Discount pricing only applies to orders received and paid in full thirty days prior to Exhibitor Move In*

<u>PROFESSIONAL FLORAL</u>	Option A TO Z	Cost on page one will increase 20% thirty days prior to move in	Quantity	Total
FRESH FLORAL (A to Z)				
FRESH FLORAL (A to Z)				
FRESH FLORAL (A to Z)				
Custom Fresh Floral Design (Include picture, color scheme and size)				
Custom Fresh Floral Design (Include picture, color scheme and size)				
Clear Bubble Bowl	For Business Cards	\$30.00		

**Customized floral arrangements for hospitality suites, luncheons and banquets available.
Please reach out to our design team to get a quote!**

<u>GREEN PLANTS</u>	Plant Type if applicable	*Discount Price	Standard Price	Quantity	Total
2' - 3' GREEN PLANT		\$50.00	\$60.00		
4' GREEN PLANT		\$60.00	\$75.00		
5' GREEN PLANT		\$75.00	\$92.00		
6' GREEN PLANT		\$85.00	\$105.00		
8' - 10' ANDONIDIA PALM		\$20 a foot	\$25 a foot		

**Standard containers come with all plant orders. Indicate preference: Black _____ White _____
Please Call for Specialty Requirements on Exterior Plants, Large Trees, Topiaries and More**

<u>LOW PLANTS</u>	Preferred Color if applicable	*Discount Price	Standard Price	Quantity	Total
FERNS		\$38.00	\$45.00		
IVY		\$38.00	\$45.00		
POTHOS		\$38.00	\$45.00		
KALANCHOES		\$35.00	\$45.00		
BROMELIADS		\$35.00	\$45.00		

***Seasonal Blooming Available**

<u>UPGRADED PLANTER OPTIONS</u>		*Discount Price	Standard Price	Quantity	Total
30" Tall White Square Urn	Use 3'-4' Green Plants, Blooming or Fresh Floral to fill planters. Price does not include plants.	\$100.00	\$150.00		
30" Tall Black Square Urn		\$100.00	\$150.00		
40" Long White Planter		\$150.00	\$200.00		
40" Long Black Planter		\$150.00	\$200.00		

Please pre-order to insure availability

**Discount pricing only applies to orders received and paid in full thirty days prior to Exhibitor Move In*

<u>SPECIALTY DESIGNS</u>		*Discount Price	Standard Price	Quantity	Total
COLORFUL BLOOMING IN WHITE LOW RECTANGULAR PLANTER	OPTION 1	\$300.00	\$375.00		
3' GREEN PLANT IN 30" TALL BLACK OR WHITE PLANTER	OPTION 2	\$160.00	\$210.00		
SNAKE PLANT IN 30" TALL BLACK OR WHITE PLANTER	OPTION 3	\$160.00	\$210.00		
3' GREEN PLANTS IN BLACK OR WHITE RECTANGULAR PLANTER	OPTION 4	\$325.00	\$400.00		
SNAKE PLANTS IN BLACK OR WHITE RECTANGULAR PLANTER	OPTION 5	\$325.00	\$400.00		
38" LONG BLACK PLANTER BOX	OPTION 6	\$150.00	\$200.00		
38" LONG WHITE PLANTER BOX	OPTION 7	\$150.00	\$200.00		

	TOTALS
DELIVERY/MAINTENANCE	\$30.00
SUBTOTAL	
SALES TAX 6.5%	
GRAND TOTAL	

**RETURN THIS ORDER FORM WITH PAYMENT TO
FLORAL EXPOSITIONS INC.**

SHOW NAME: _____
LOCATION: _____
SHOW DATES: _____ BOOTH#: _____
BOOTH REPRESENTATIVE: _____
ONSITE PHONE#: () _____ - _____
COMPANY _____
CC BILLING ADDRESS: _____
CITY: _____ STATE: _____ ZIP CODE#: _____
AUTHORIZED SIGNATURE: _____
PAYMENT ENCLOSED: Check: _____ CC: _____
EMAIL ADDRESS: _____
Credit Card#: _____
Expiration Date: _____ Security Code (CVV)#: _____
Name of Credit Card Holder: _____

*If tax exempt, you must include your tax-exempt form for the state in which the show is being held.

EXHIBITOR - ONCE YOUR ORDER IS PLACED A PAID INVOICE WILL BE EMAILED FOR YOUR FILES.

CALL US 407-961-6531 or EMAIL US orders@floralexpo.net

Custom Floral, Planters, Living Walls and more are available thirty days prior to your show. Please email us your booth rendering and we will happily discuss pricing for your custom ideas, as well as, offer unique design suggestions.

____ Please have a designer see us at our booth _____ Date/Time _____ Representative _____
All material and plants are rental items only. Items missing from your booth upon dismantle are the responsibility of the exhibitor and additional charges may be applied. All pricing above includes servicing throughout the show and removal at end of show. The availability of some items is subject to season and geography. All orders must be paid in full prior to show date. Adjustments cannot be made after the close of show. Orders cannot be canceled thirty days prior to the show.

**Discount pricing only applies to orders received and paid in full thirty days prior to Exhibitor Move In*