



**NFMT**

Rio All-Suite Hotel & Casino - Las Vegas, NV

November 6 -7, 2018

Order Deadline **Friday, October 5, 2018**

Order with full payment and graphic files must be received by Order Deadline Date above. Orders received after this date may not be available.

Event Code: L103041118

**Connect With Us!** email [lasvegas@shepardes.com](mailto:lasvegas@shepardes.com)  
 phone (702) 507-5278  
 fax (702) 948-0341  
 mail 5845 Wynn Road, Suites A,B,C,D, Las Vegas, NV 89118

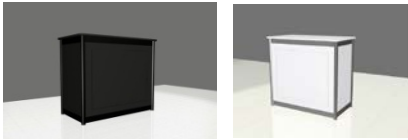
Custom Exhibit Counters

**Choose Your Counter & Customize to Fit Your Exhibit!**

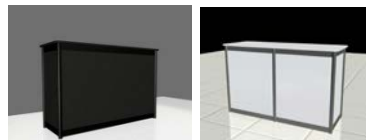
Color choices for all products **Metal Colors** Black (06) Silver (15) **Panel Colors** Black (06) White (03)

**Locking Cabinets**

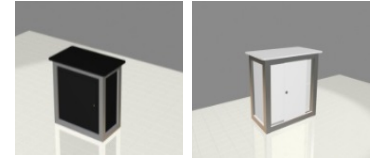
LC1 1Meter Wide



LC2 1.5 Meters Wide



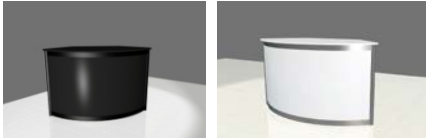
LC3



Code	Qty	Item	Product Size	Discount	Regular	Metal Color	Panel Color
66282		LC1	3' 6" L x 3' 6" H x 1' 9" D	\$691.25	\$898.65		
66283		LC2	5' L x 3' 6" H x 1' 9" D	\$838.85	\$1,090.50		
66284		LC3	3' 9" L x 3' 6" H x 2' 3" D	\$509.90	\$662.85	Silver Only	

**Reception Counters**

RC2



RC3



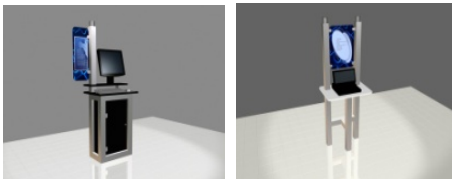
Code	Qty	Item	Product Size	Discount	Regular	Metal Color	Panel Color
66275		RC2	1' 9" L x 2' 3" D x 3' 3" H x 2' 3"	\$710.85	\$924.10		
66276		RC3	5' 3" L x 3' 6" H x 3' 3" D	\$1,542.00	\$2,004.60		

Graphic size: 1075mm x 885mm

**Computer Stands-Silver Metal Only (graphic included!)**

CS1

CS2



Code	Qty	Item	Product Size	Discount	Regular	Panel Color	Graphic Size
66285		CS1	3' L x 6' 3" H x 1' 9" D	\$896.75	\$1,165.80		250mm x 700mm
66286		CS2	2' 3" L x 6' 3" H x 1' 6" D	\$522.65	\$679.45		380mm x 580mm

**Don't See what you are looking for or need a tweak to a design?  
 Let one of our incredible designers create something just for you!**

Signature indicates you read and accept the Payment Policy and Terms & Conditions.

All orders cancelled by the exhibitor within 30 days of first day of exhibitor move in day may be subject to cancellation fees up to 100% of the total order, based upon the status of move-in, work performed and/or Shepard set-up costs or expenses.

\* All tax rates are subject to change.

Total Counter Rentals: \$ \_\_\_\_\_  
 8.250% Tax\*: \$ \_\_\_\_\_  
 Amount Due: \$ \_\_\_\_\_

Company Name: \_\_\_\_\_ Booth # \_\_\_\_\_

Contact Name

Contact Email Address



Card Holder Signature